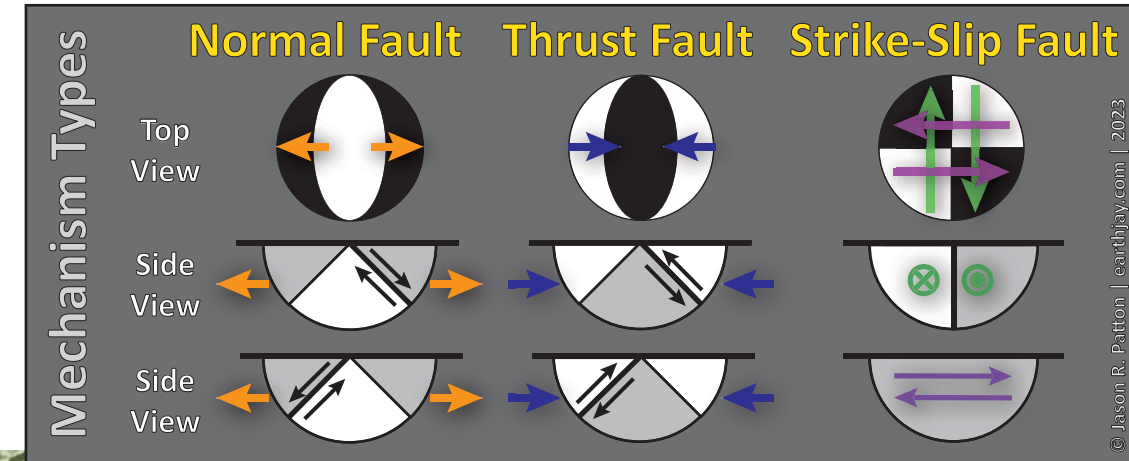
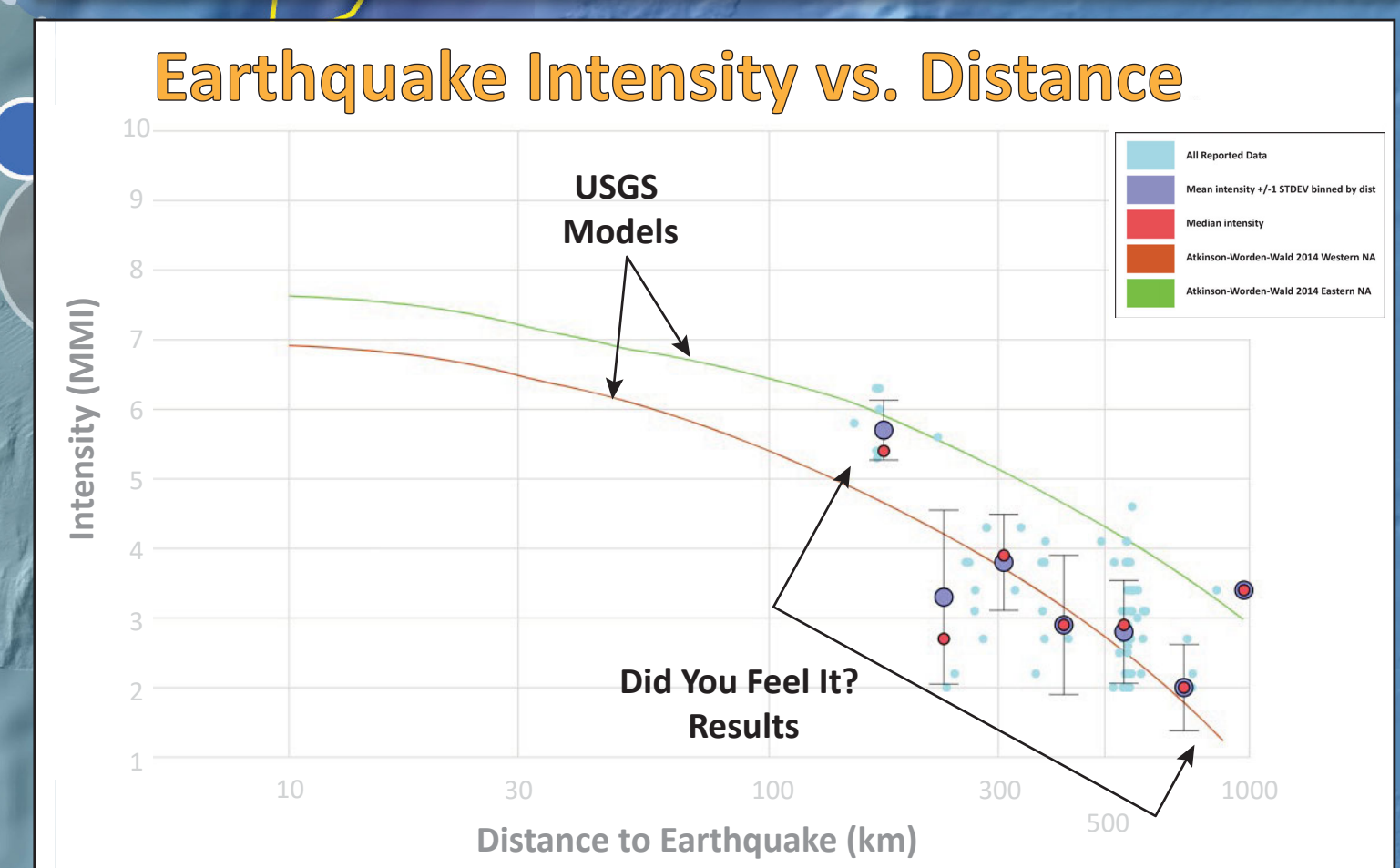
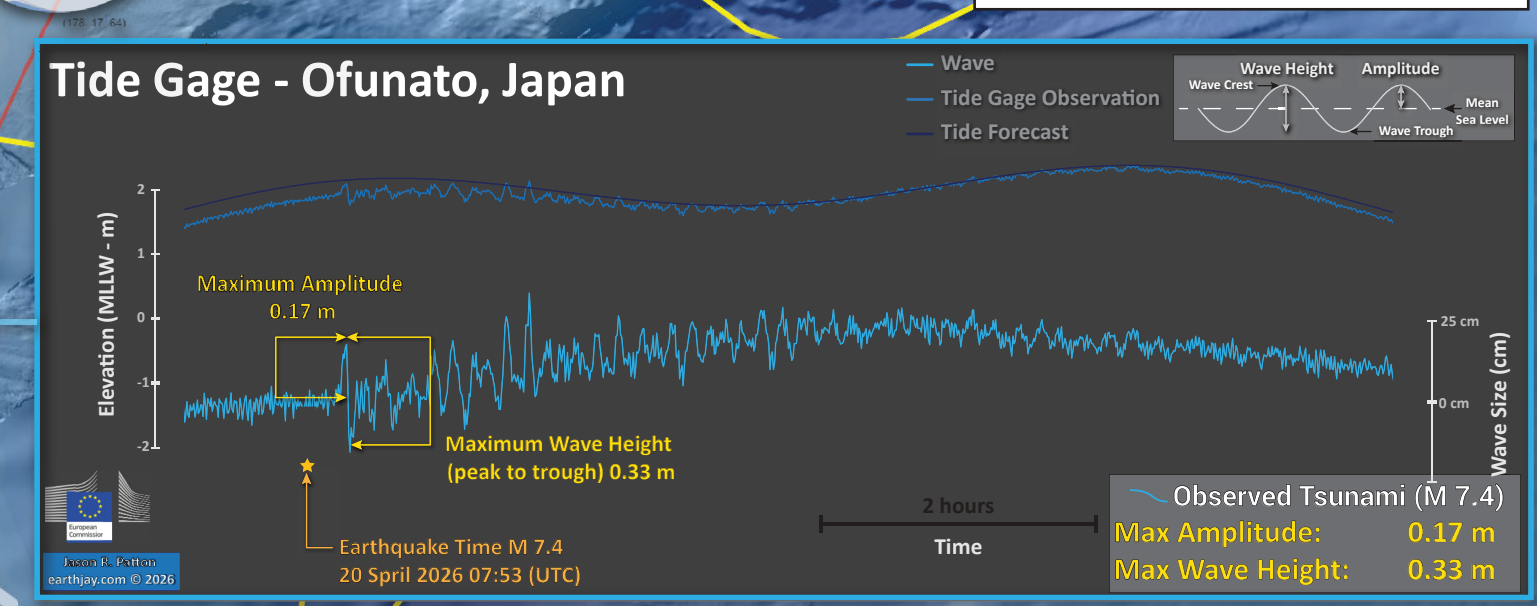
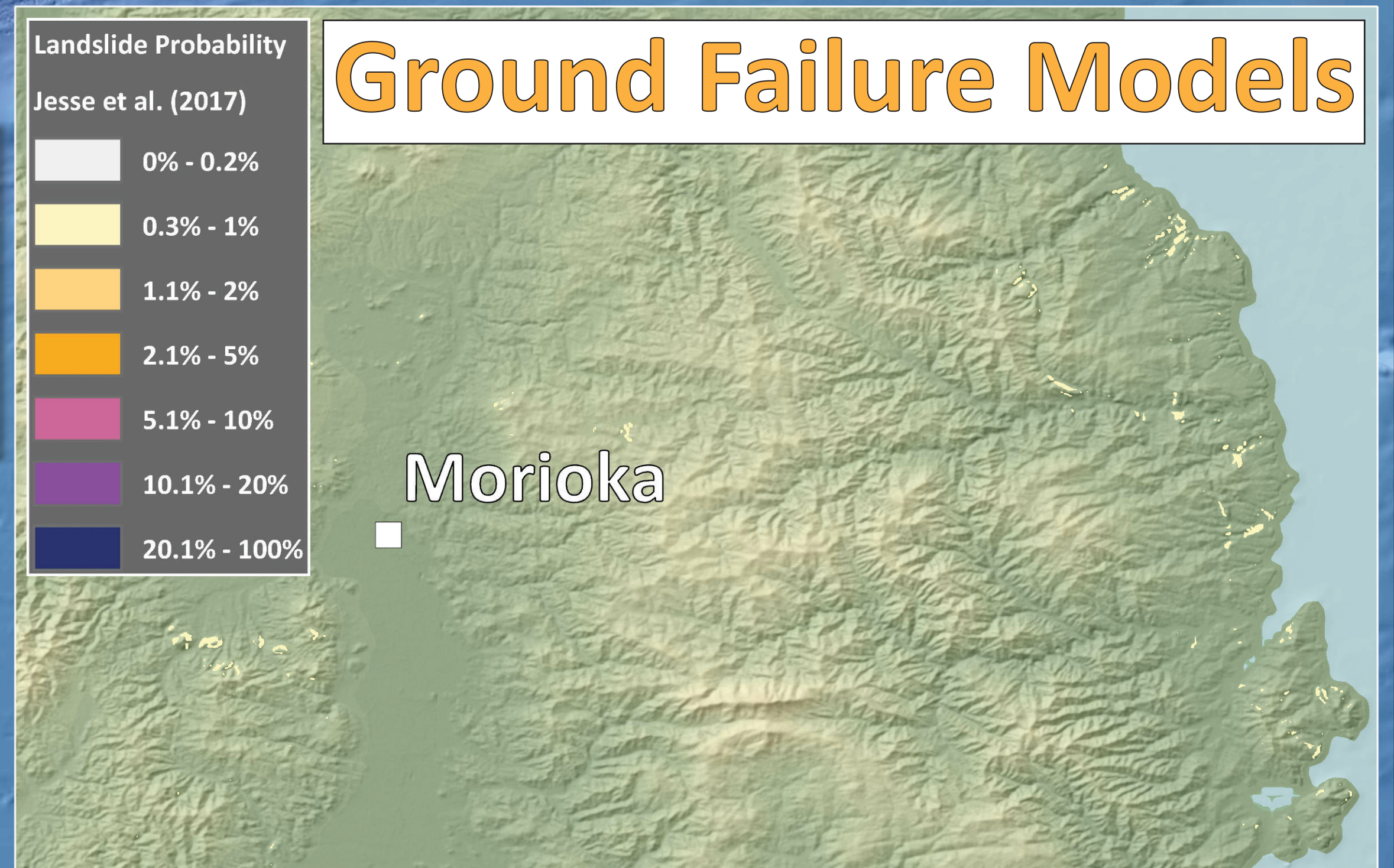
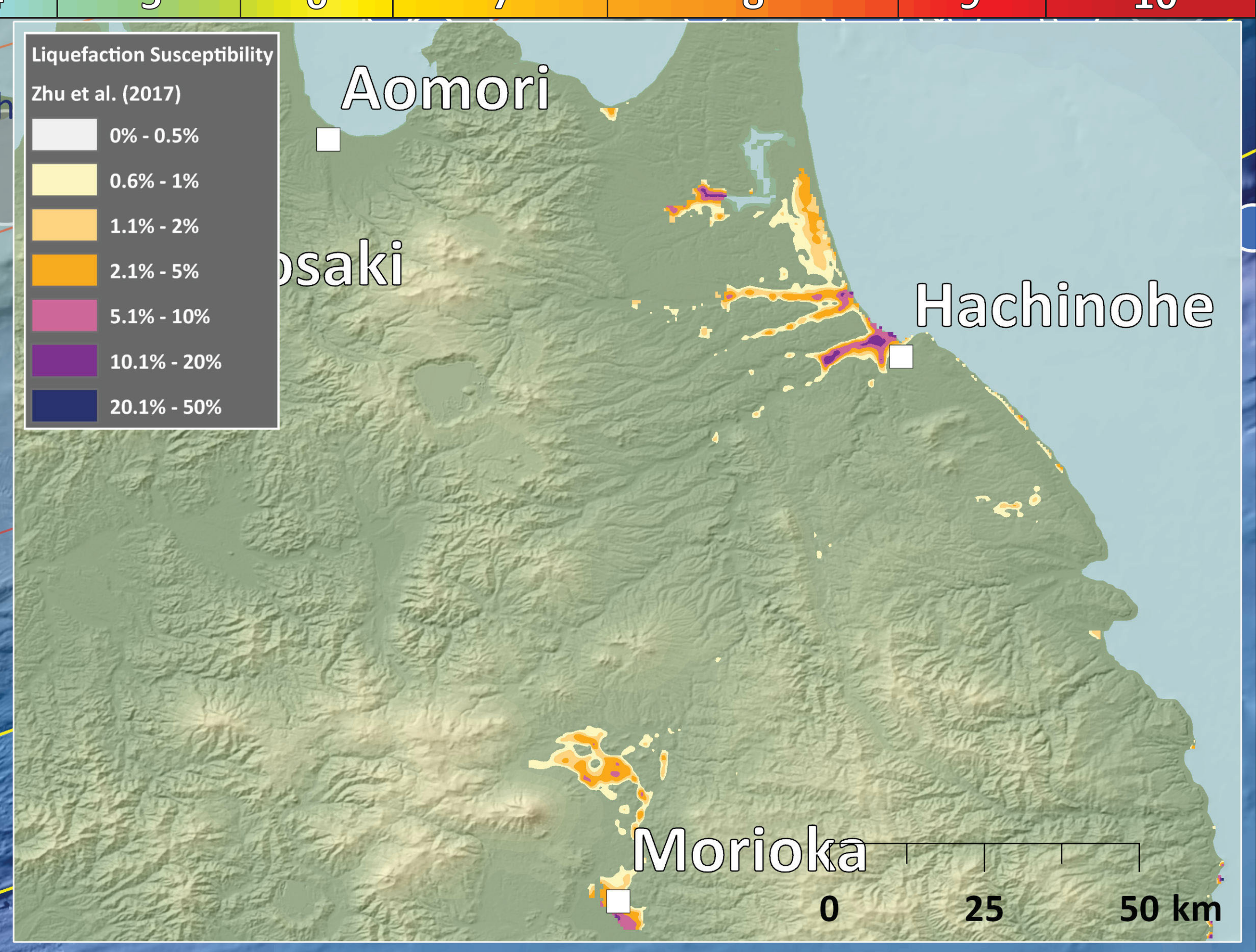
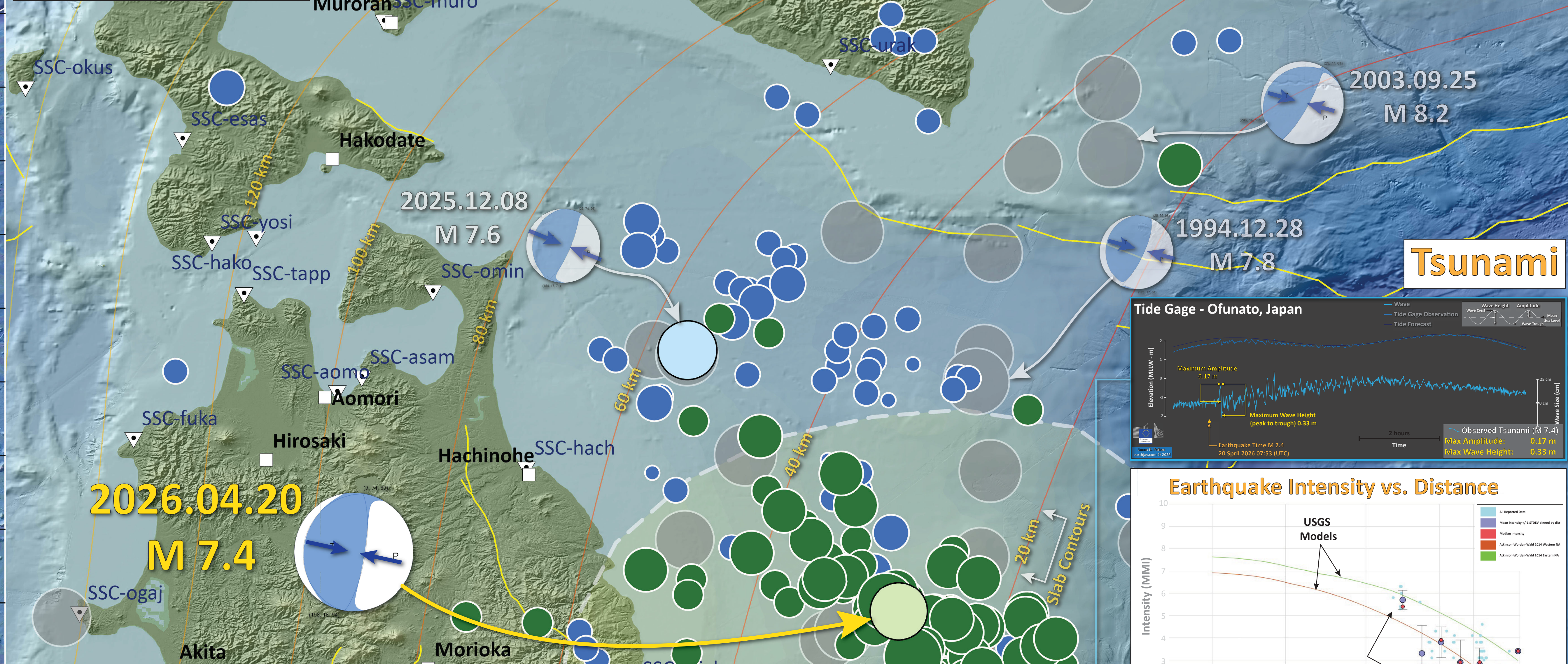
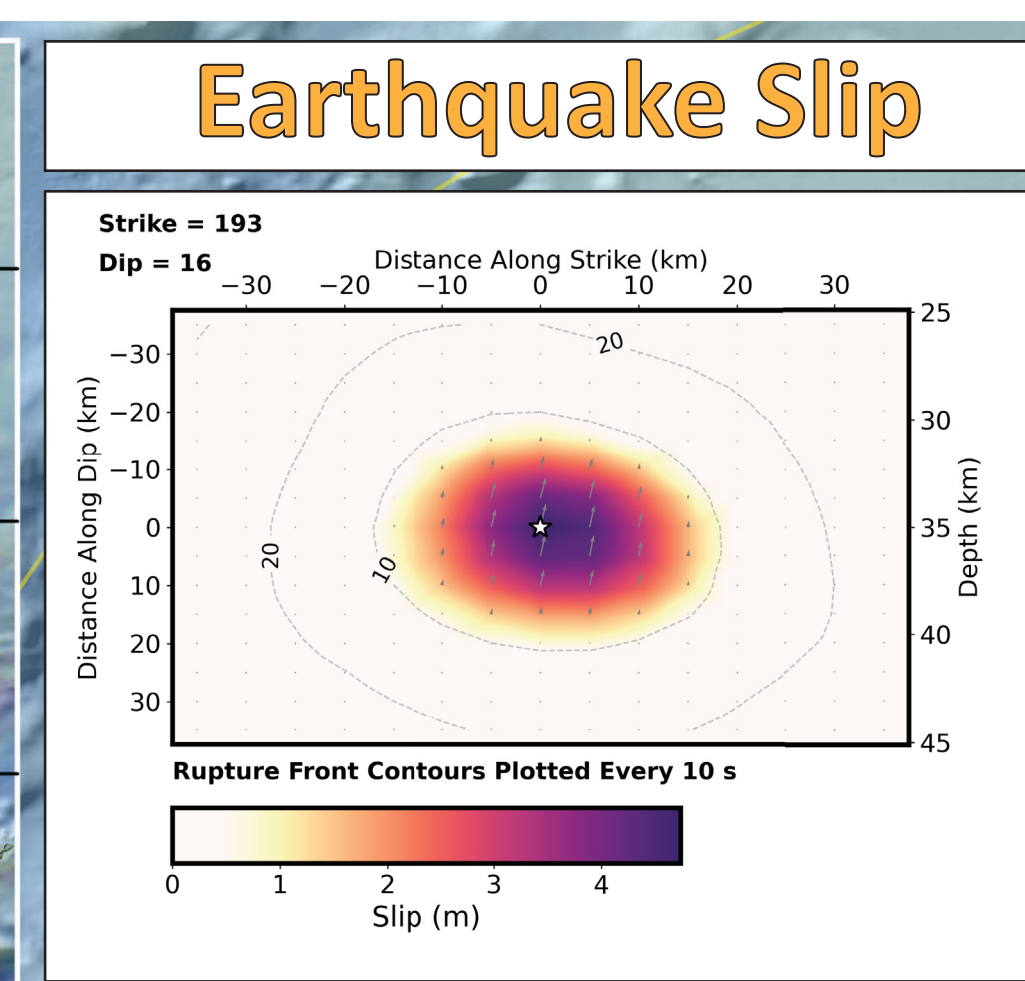
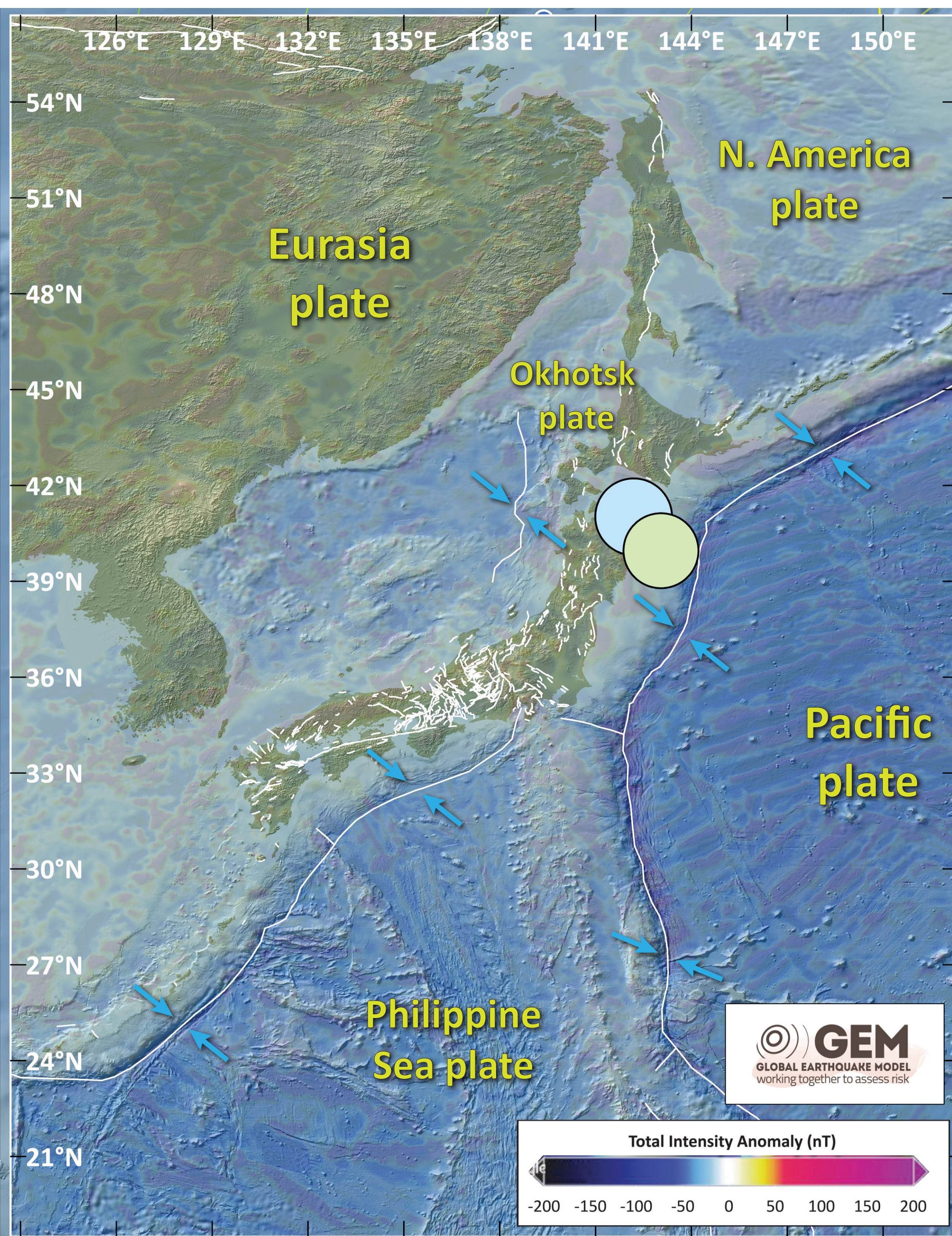


# Earthquake Report: 2026.04.20

## M 7.4 Japan (& USGS Seismicity 1926-2026 M ≥ 7.0)



| SHAKING    | Not Felt | Weak | Light | Moderate   | Strong | Very Strong | Severe         | Violent | Extreme    |
|------------|----------|------|-------|------------|--------|-------------|----------------|---------|------------|
| DAMAGE     | Note     | None | None  | Very Light | Light  | Moderate    | Moderate/Heavy | Heavy   | Very Heavy |
| PGA (%g)   | <0.05    | 0.3  | 2.76  | 6.2        | 11.5   | 21.5        | 40.1           | 74.7    | >139       |
| PGV (cm/s) | <0.02    | 0.13 | 1.41  | 4.65       | 9.64   | 20          | 41.4           | 85.8    | >178       |
| INTENSITY  | 1        | 2-3  | 4     | 5          | 6      | 7           | 8              | 9       | 10         |



**Seismicity (USGS - 1 century) magnitude**

- 20 April '26 M 7.4
- 8 Dec '25 M 7.6
- 11 Mar '11 M 9.1

**Seismicity (USGS - 2 month) magnitude**

- 0.0 - 1.5
- 1.6 - 3.0
- 3.1 - 4.4
- 4.5 - 5.9
- 6.0 - 7.4

**Seismicity (USGS - 6 month) magnitude**

- 2.0 - 3.0
- 3.1 - 4.0
- 4.1 - 5.0
- 5.1 - 6.0
- 6.1 - 7.0
- 7.1 - 7.6

**Seismicity (USGS - 1 century) magnitude**

- 7.0 - 7.5
- 7.6 - 8.0
- 8.1 - 8.5
- 8.6 - 9.0
- 9.1 - 9.5

**Elevation** (High/Low) and **Depth** (Shallow/Deep) scales.

**Legend:** Seismicity (USGS - 1 century), Seismicity (USGS - 2 month), Seismicity (USGS - 6 month), 2011 Aftershock Region, Fault, City, Tide Gage.

Topography: Ryan et al., 2009  
doi:10.1029/2008GC002332  
Fault (AFEAD v2021)

0 50 100 Miles  
0 100 200 Kilometers

Depth to Slab (km) scale: 0, 50, 100, 150, 200, 250, 300, 400, 500, 600, 700

Jason R. Patton  
earthjay.com © 2026

