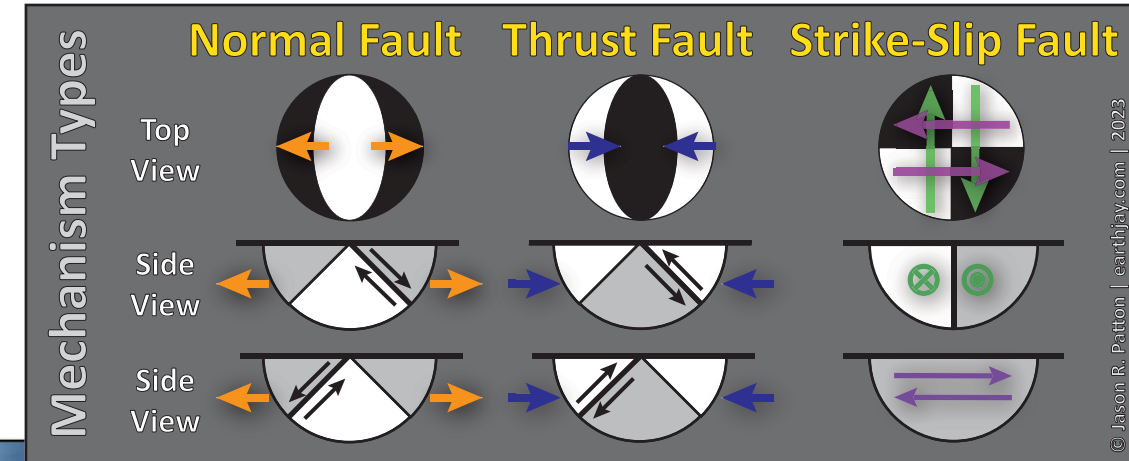
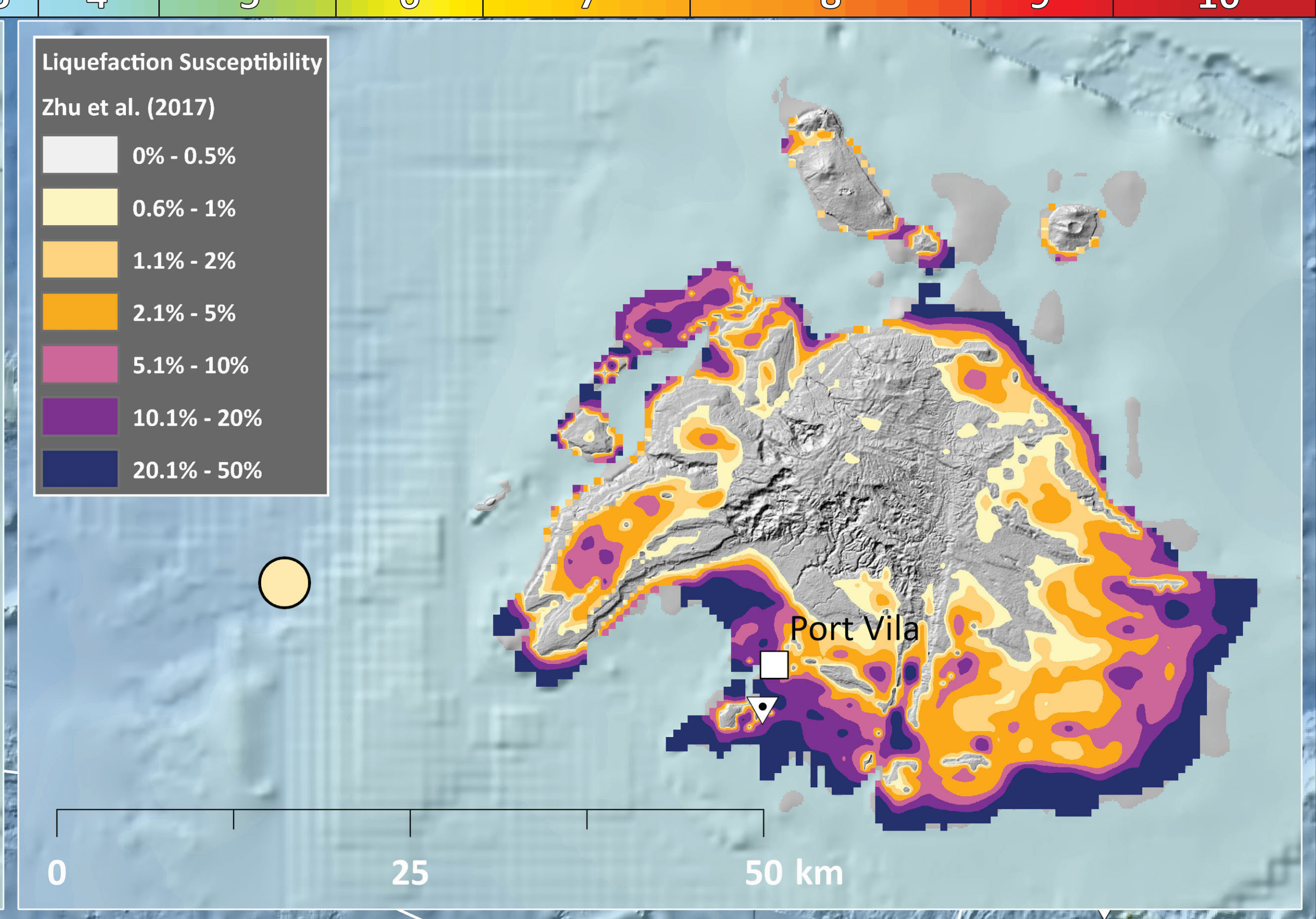
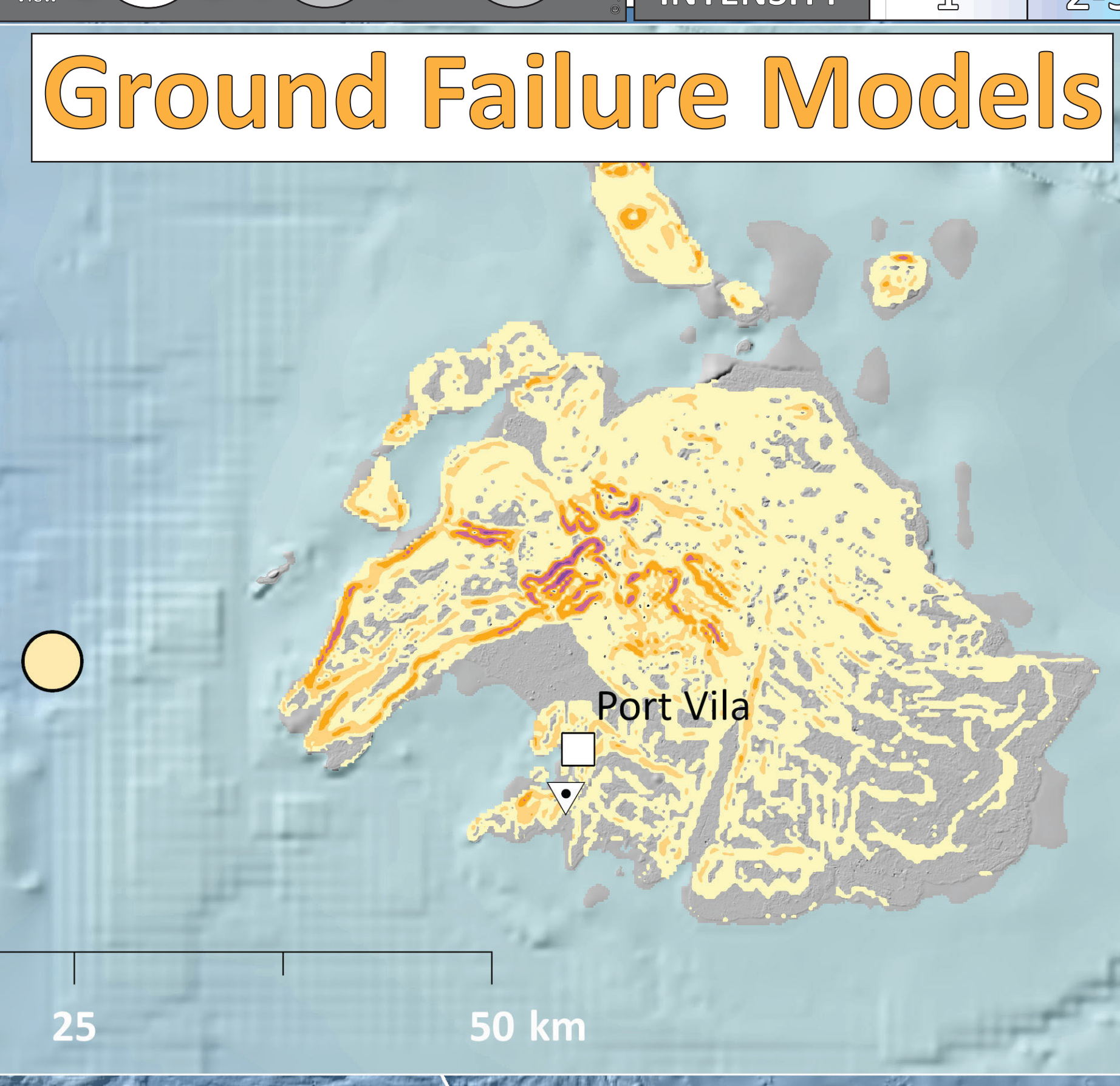
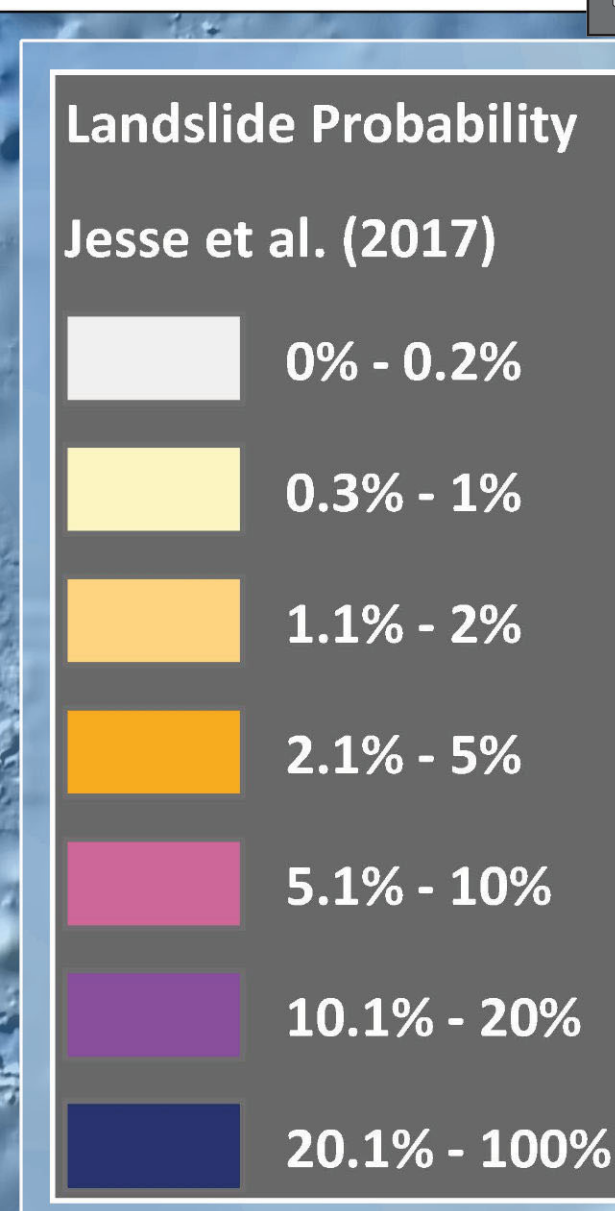
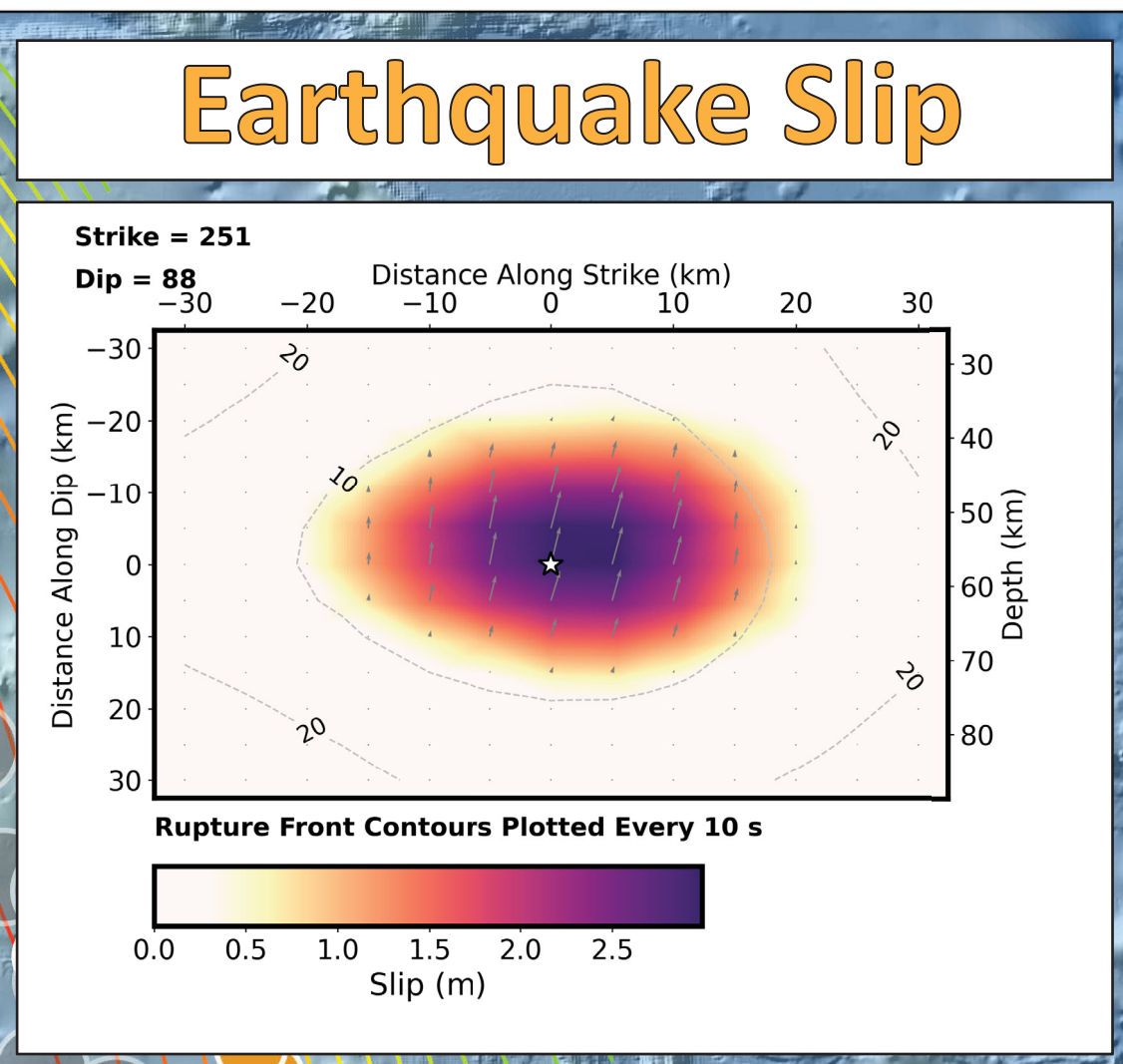
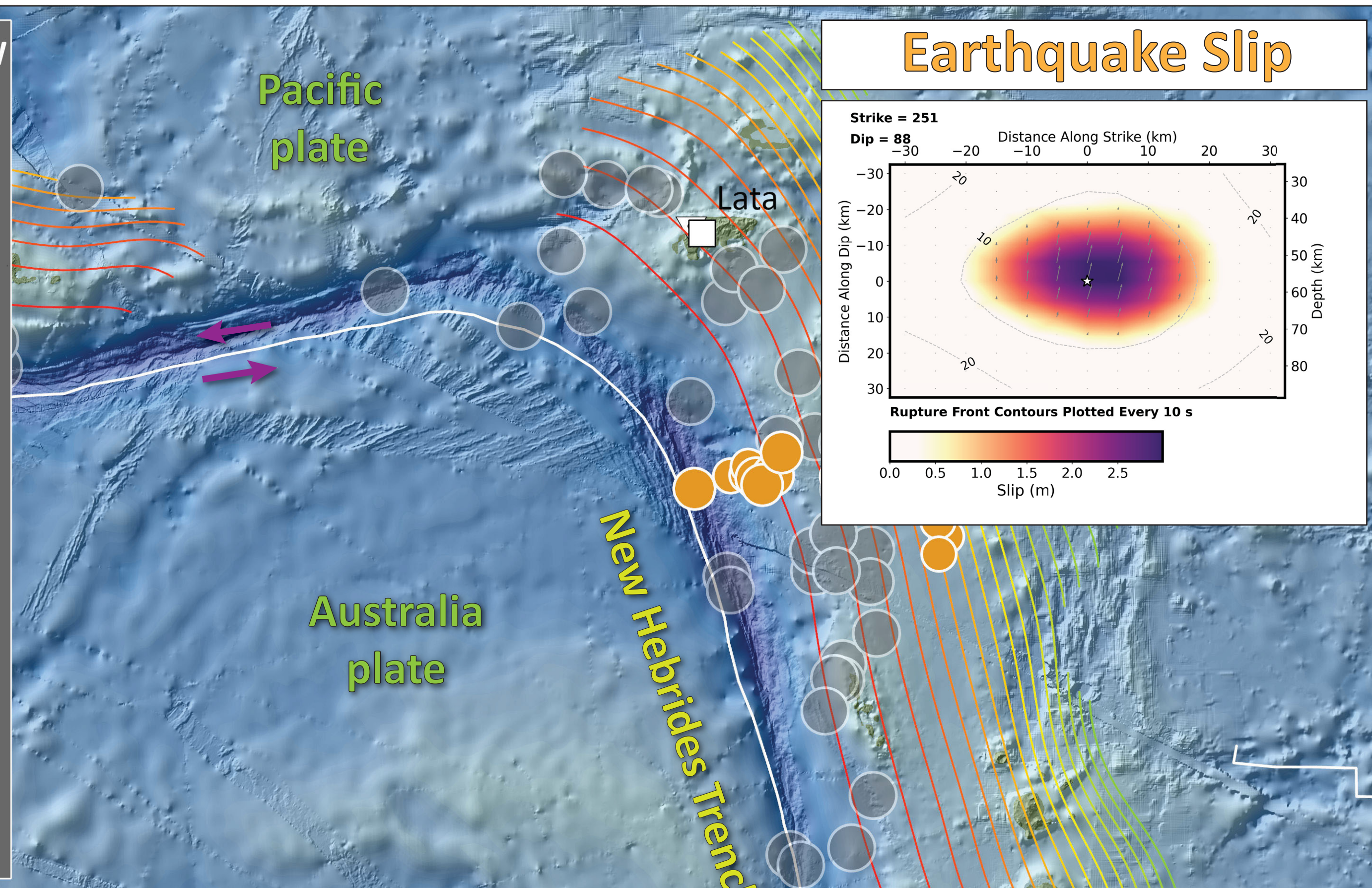
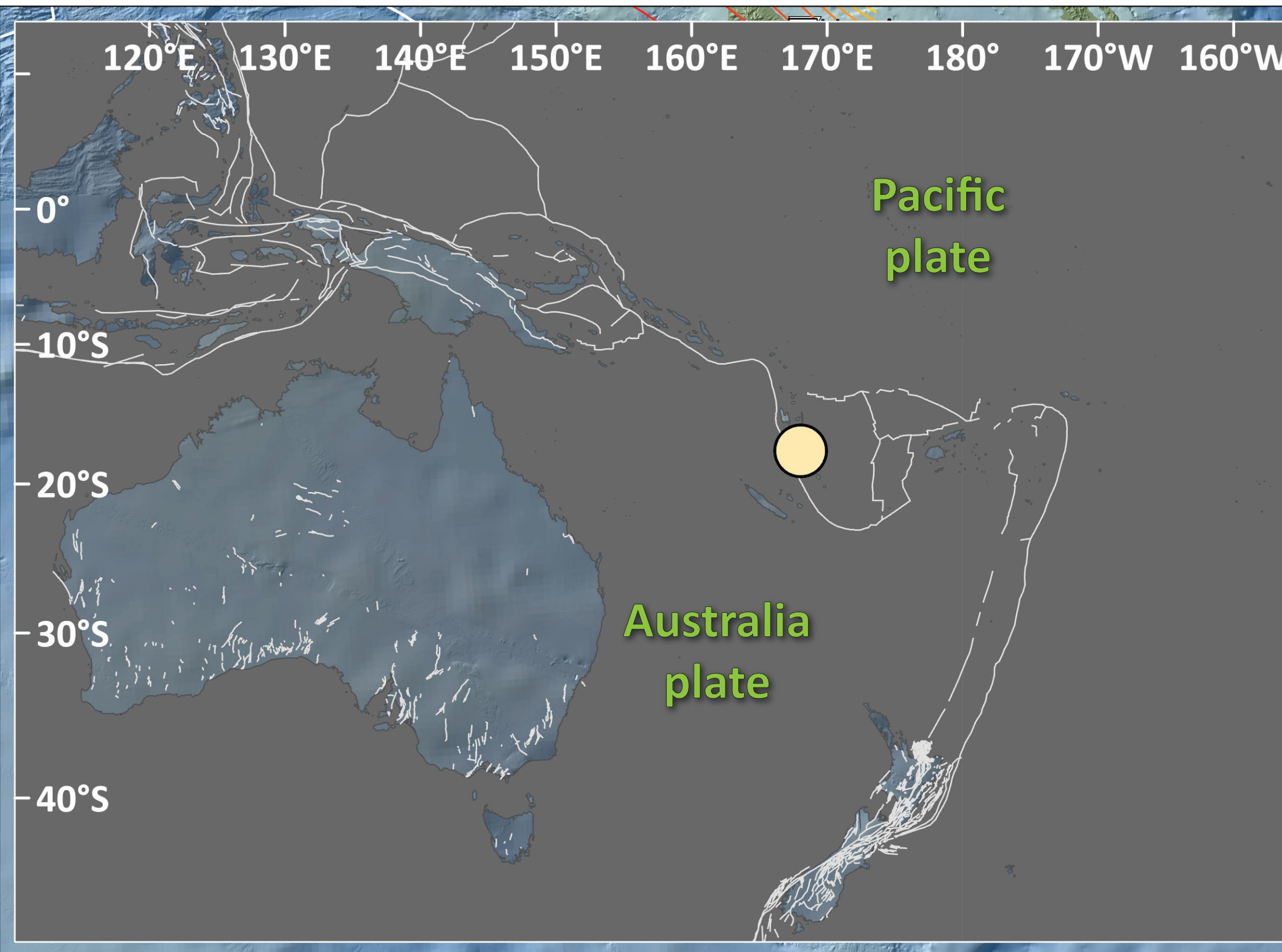


Earthquake Report: 2024.12.17

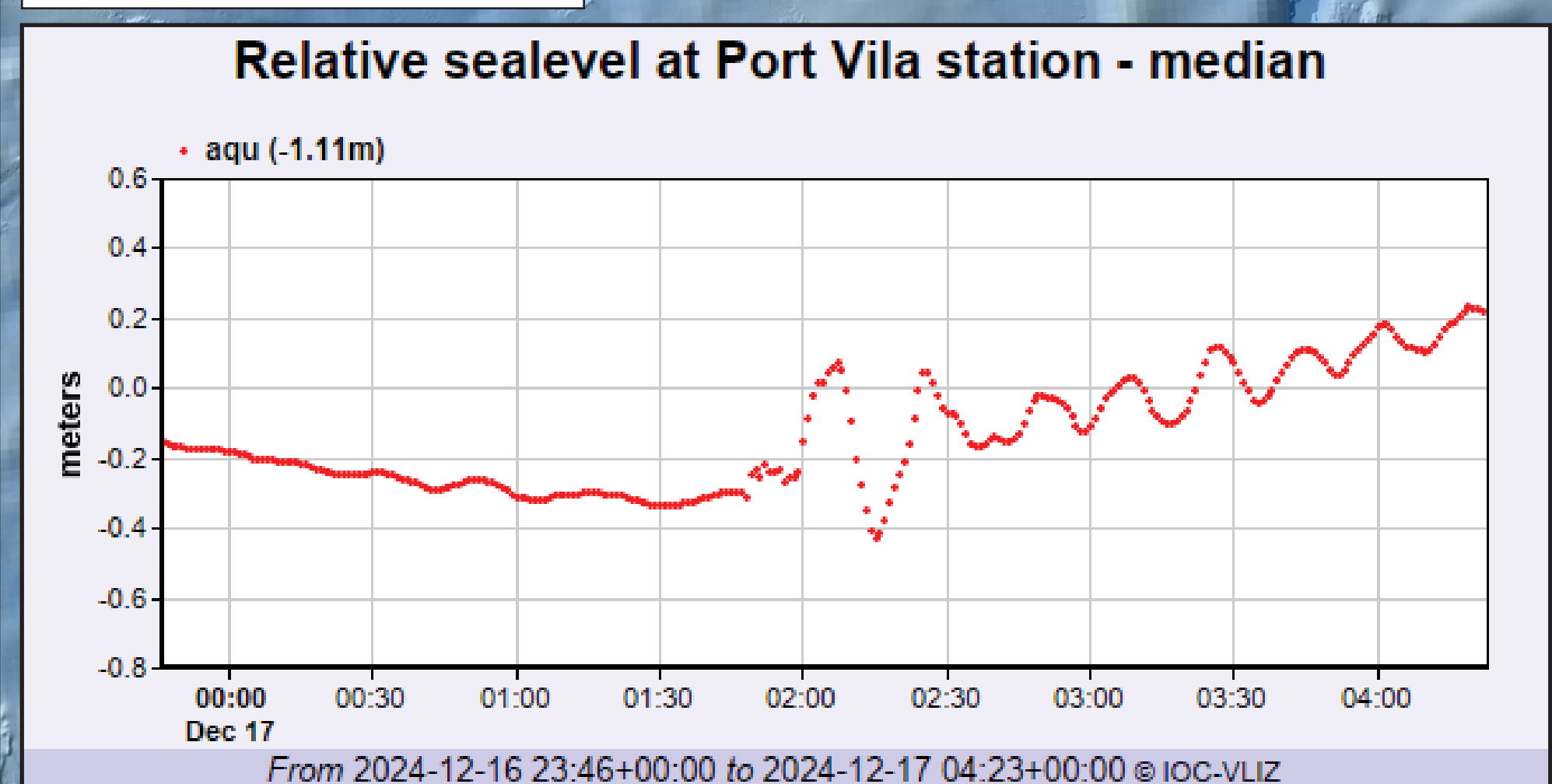
M 7.3 Vanuatu (& USGS Seismicity 1924-2024 M ≥ 7.0)



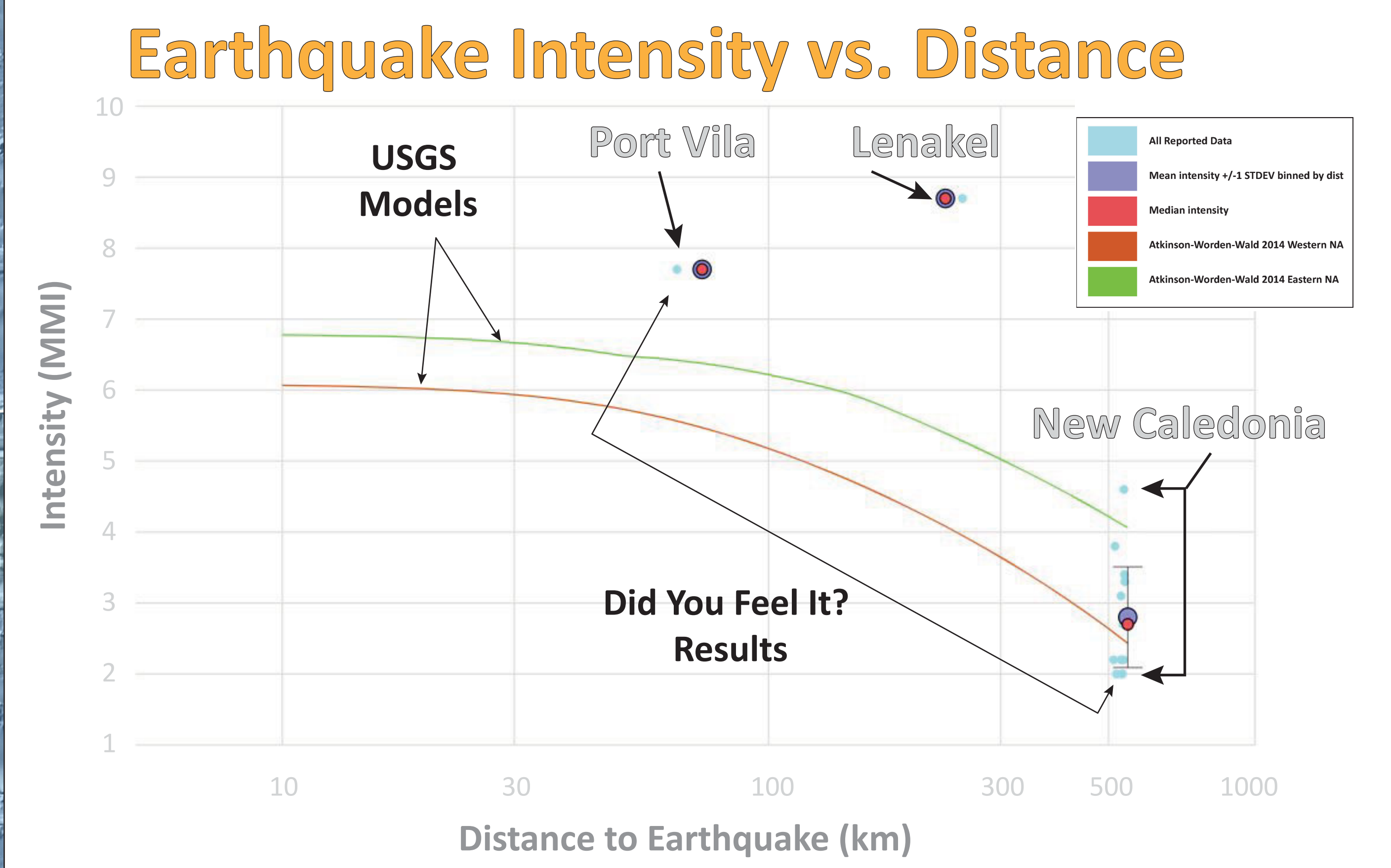
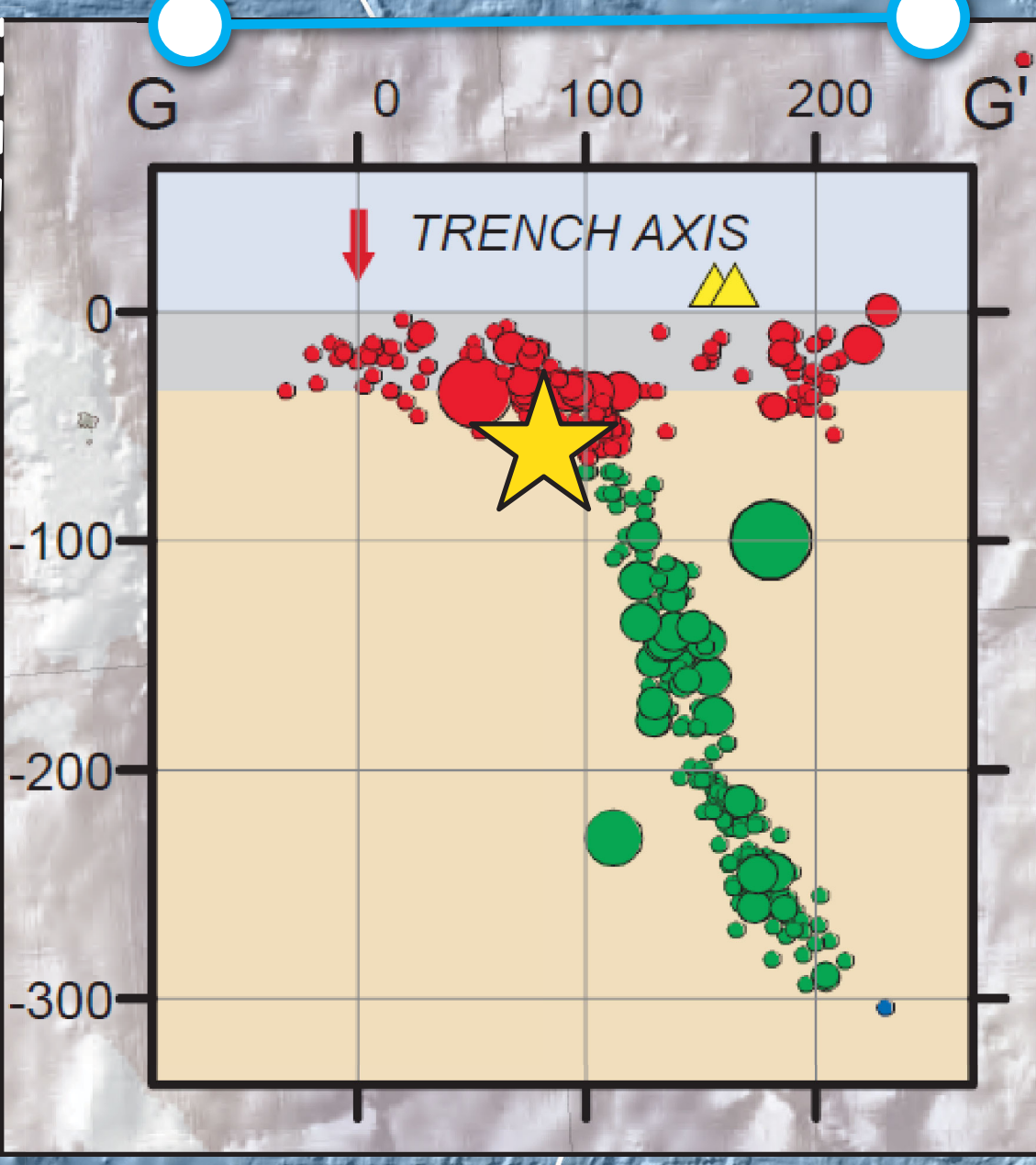
SHAKING	Not Felt	Weak	Light	Moderate	Strong	Very Strong	Severe	Violent	Extreme
DAMAGE	Note	None	None	Very Light	Light	Moderate	Moderate/Heavy	Heavy	Very Heavy
PGA (%g)	<0.05	0.3	2.76	6.2	11.5	21.5	40.1	74.7	>139
PGV (cm/s)	<0.02	0.13	1.41	4.65	9.64	20	41.4	85.8	>178
INTENSITY	1	2-3	4	5	6	7	8	9	10



Tsunami



2024.12.17
M 7.3



- 8 Jan '22 M 7.0
- Seismicity (USGS - 1 century) magnitude
- Seismicity (USGS - 1 month) magnitude
- 0.2 - 1.0
- 1.1 - 2.0
- 2.1 - 3.0
- 3.1 - 4.0
- 4.1 - 5.0
- 5.1 - 6.0
- 6.1 - 7.3
- 7.0 - 8.0
- 8.1 - 9.1
- Sea Level Sensor
- Fault (GEM)
- Populated Place
- Elevation High / Low
- Depth Shallow / Deep
- Depth to Slab (km)
- 0 37.5 75 150 Miles
- 0 50 100 200 Kilometers
- Natural Earth
- GEM GLOBAL EARTHQUAKE MODEL
- Jason R. Patton earthjay.com © 2024
- USGS science for a changing world

