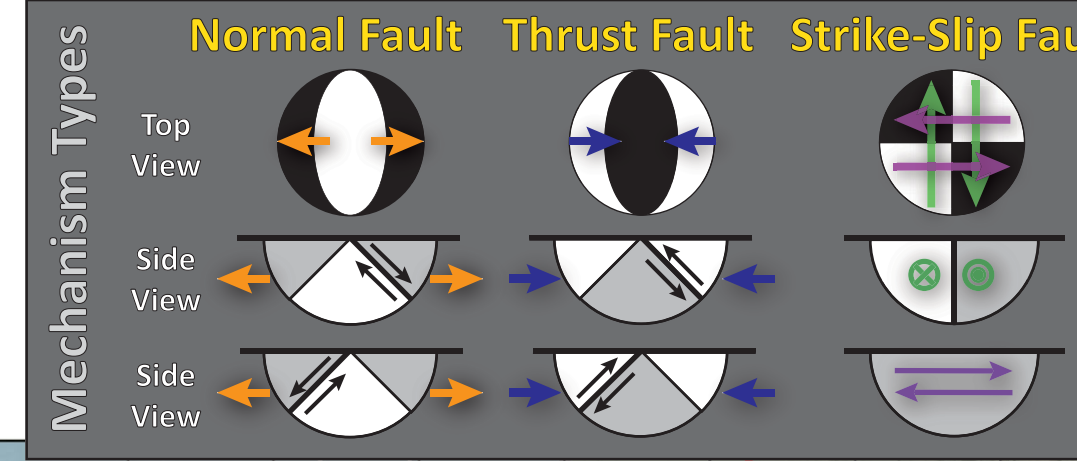
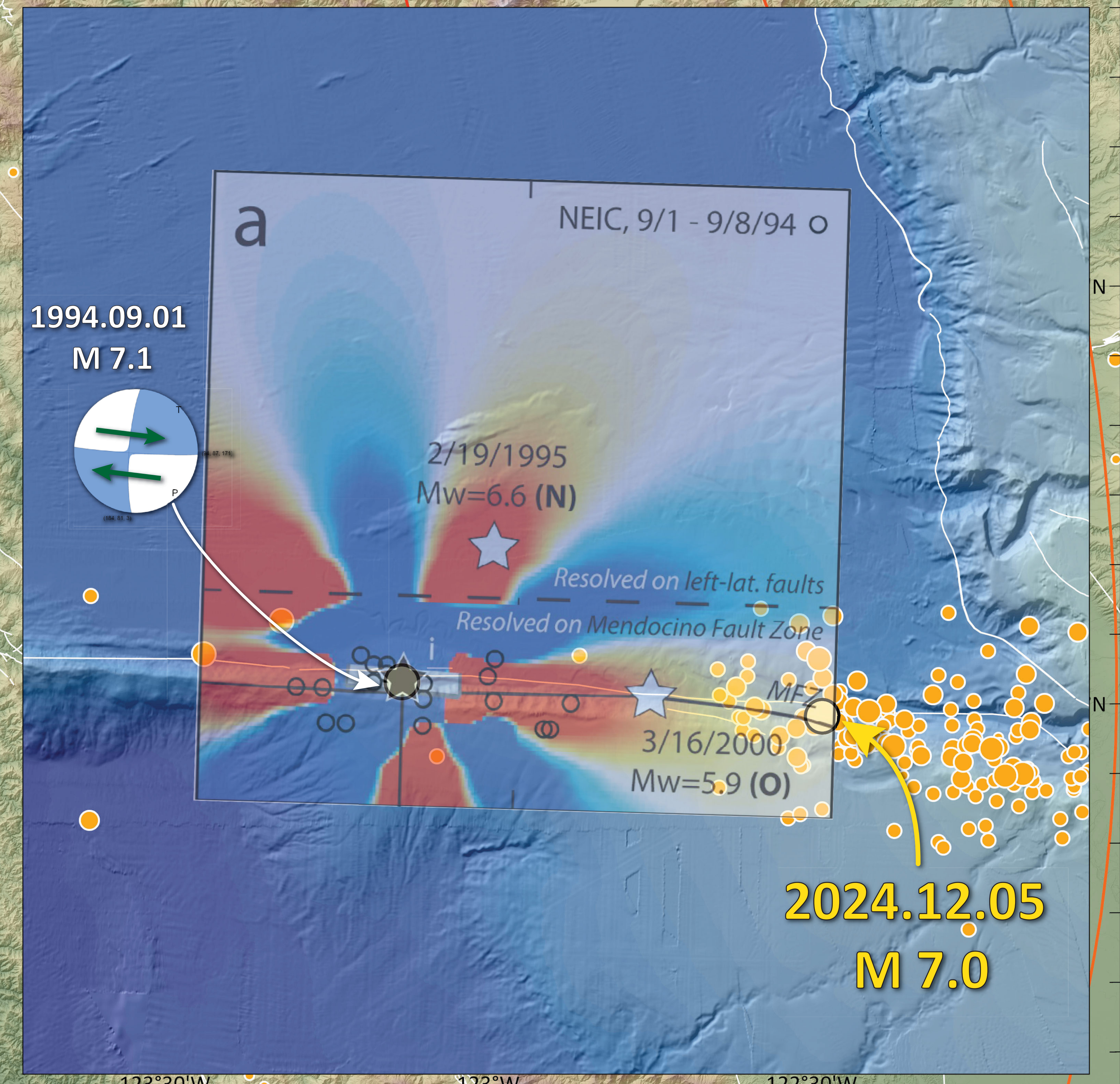
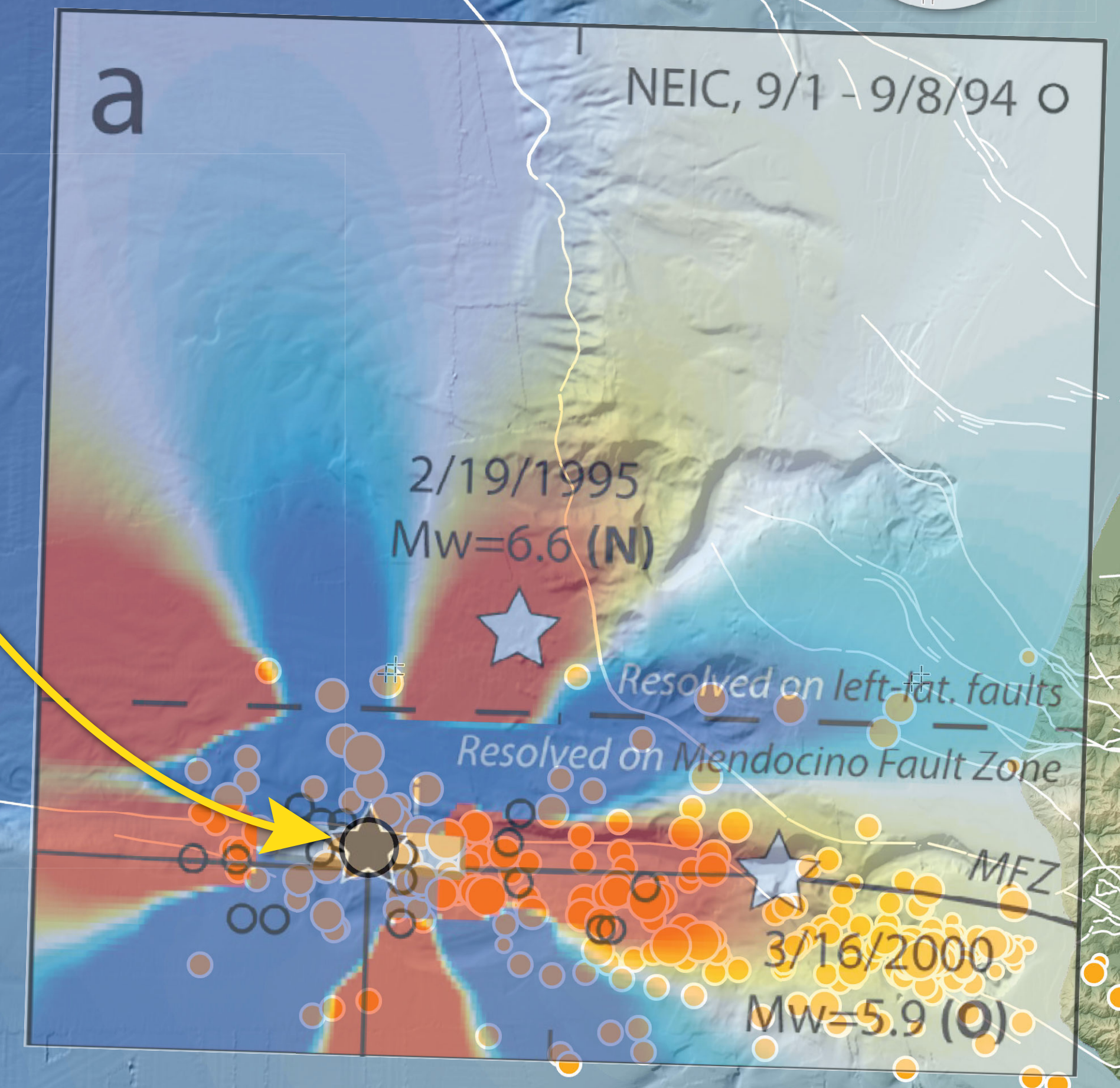
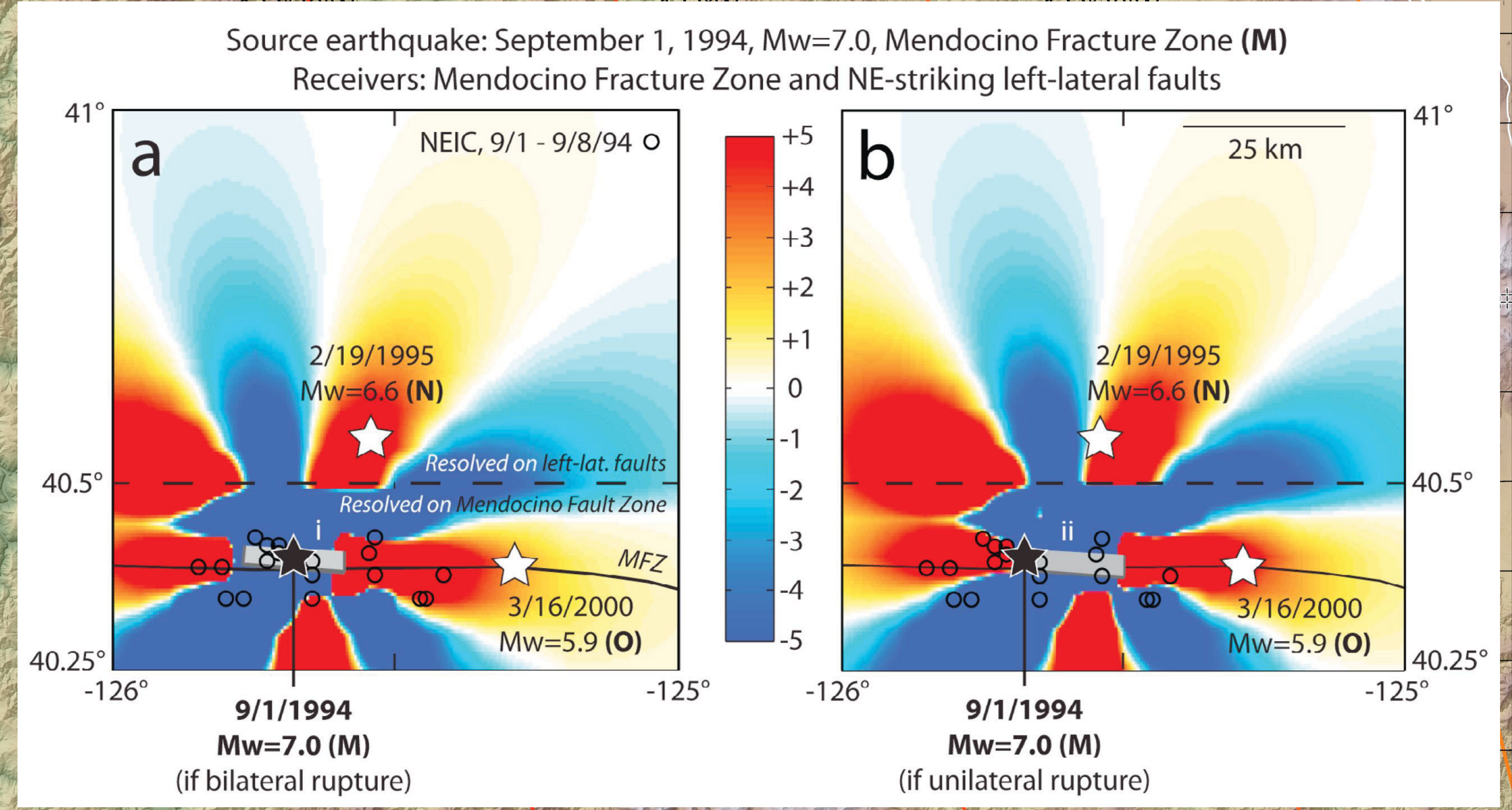
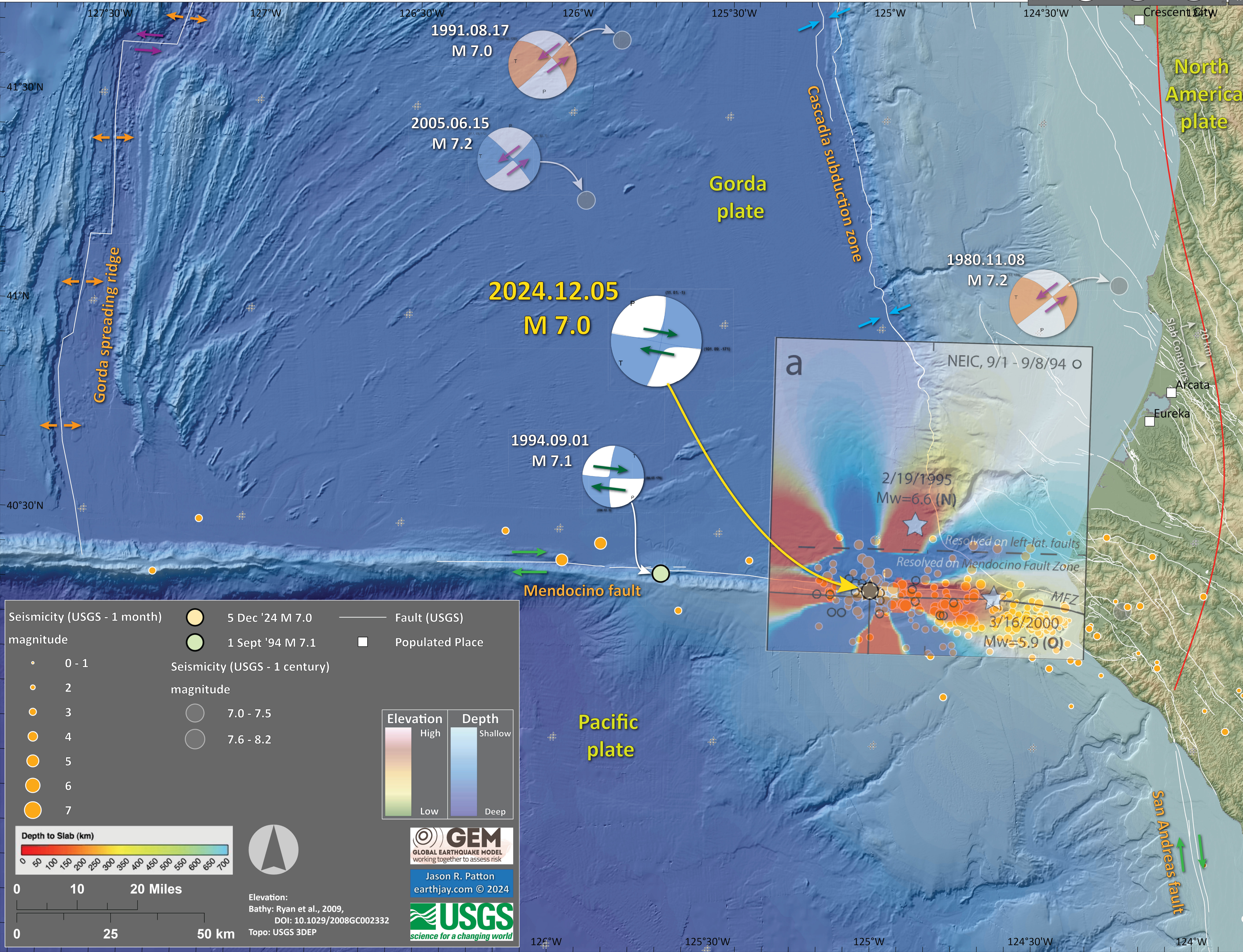


Earthquake Report: 2024.12.05

M 7.0 California



SHAKING	Not Felt	Weak	Light	Moderate	Strong	Very Strong	Severe	Violent	Extreme
DAMAGE	Note	None	None	Very Light	Light	Moderate	Moderate/Heavy	Heavy	Very Heavy
PGA (%g)	<0.05	0.3	2.76	6.2	11.5	21.5	40.1	74.7	>139
PGV (cm/s)	<0.02	0.13	1.41	4.65	9.64	20	41.4	85.8	>178
INTENSITY	1	2-3	4	5	6	7	8	9	10



Seismicity (USGS - 1 month) magnitude

- 0 - 1
- 2
- 3
- 4
- 5
- 6
- 7

Seismicity (USGS - 1 century) magnitude

- 7.0 - 7.5
- 7.6 - 8.2

Fault (USGS)

Populated Place

Elevation: High to Low

Depth: Shallow to Deep

Depth to Slab (km): 0 to 700

Scale: 0 to 20 Miles, 0 to 50 km

Elevation: Bathymetry: Ryan et al., 2009, DOI: 10.1029/2008GC002332

Topo: USGS 3DEP

GEM GLOBAL EARTHQUAKE MODEL working together to assess risk

Jason R. Patton earthjay.com © 2024

USGS science for a changing world