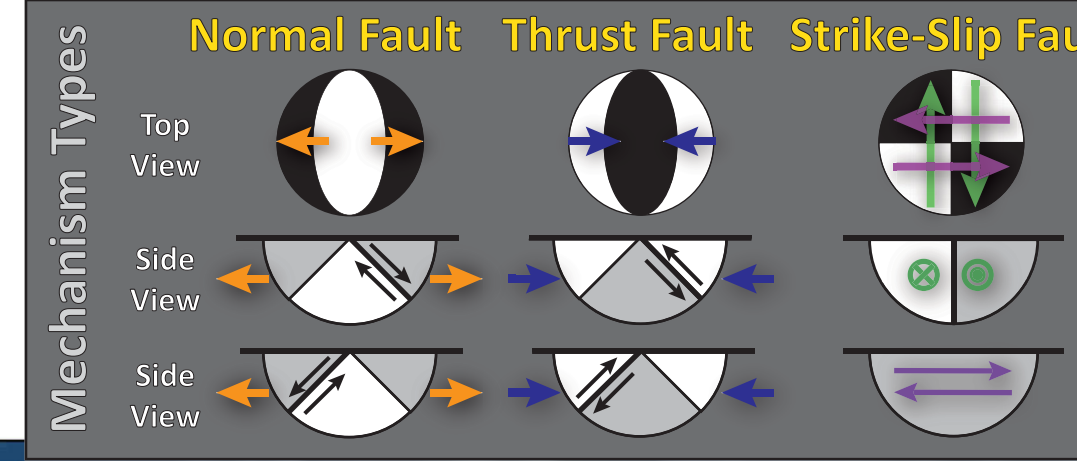
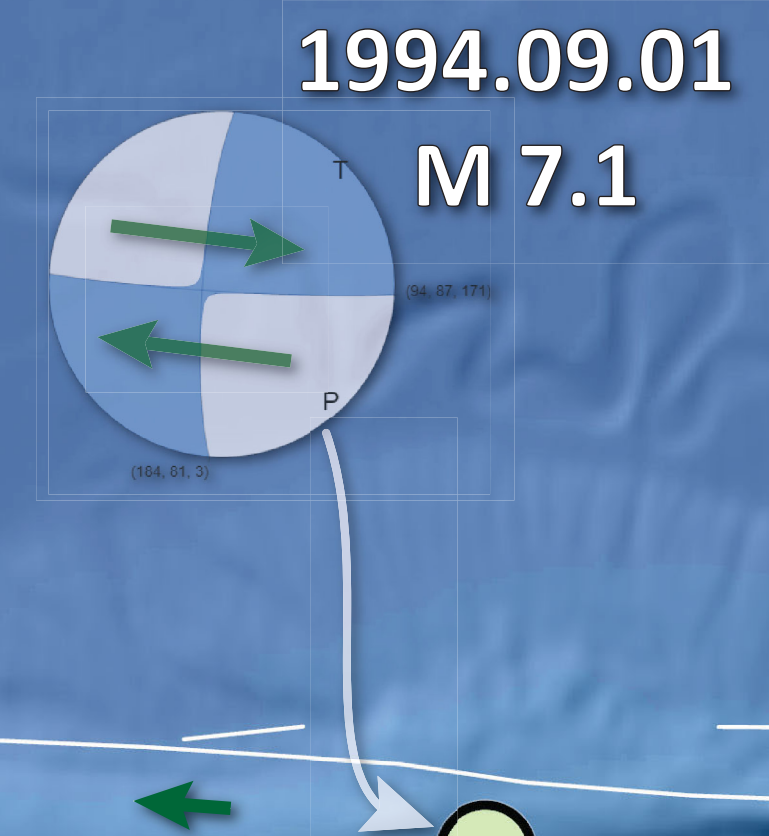
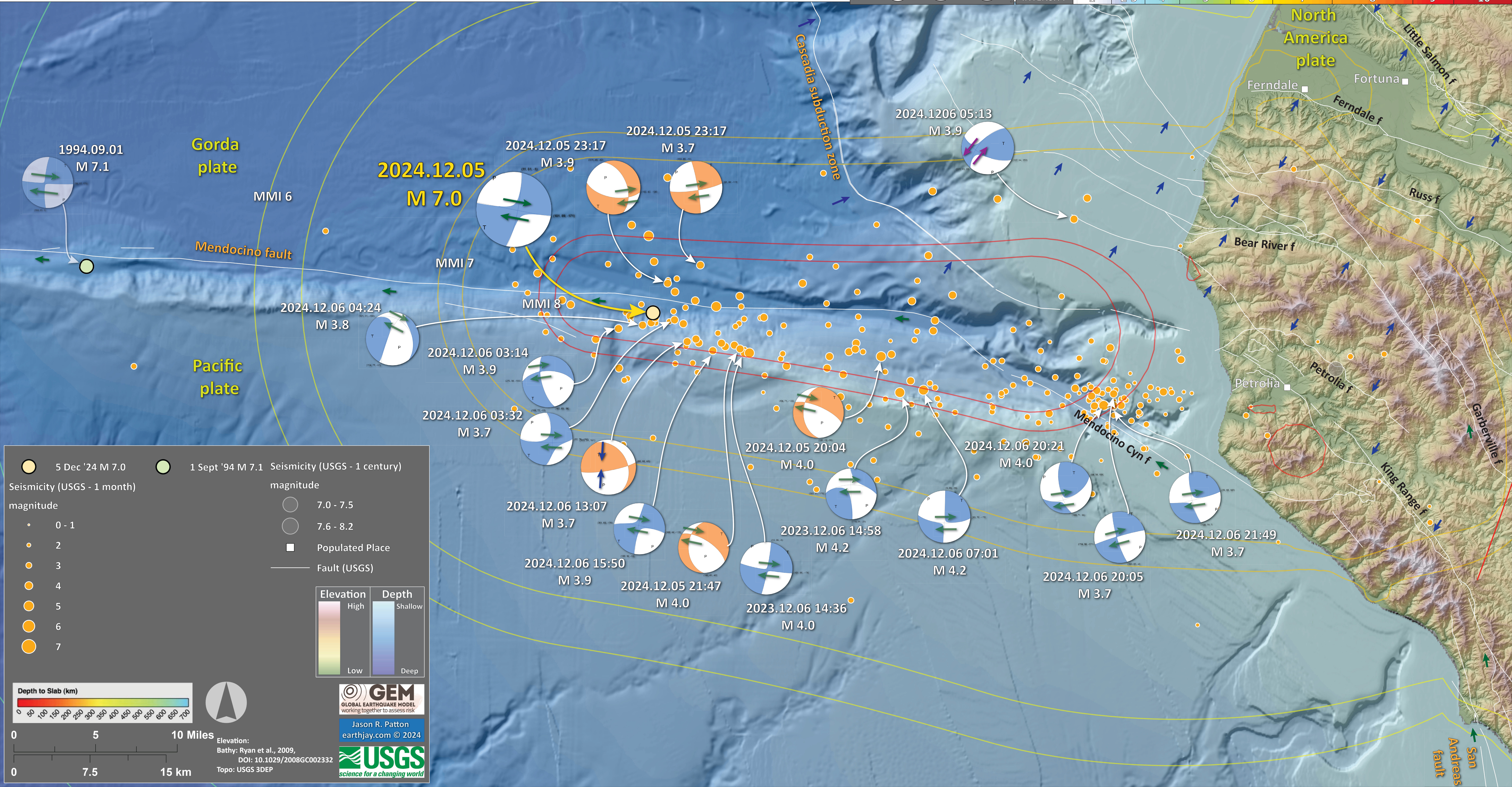


Earthquake Report: 2024.12.05

M 7.0 California (& USGS Seismicity)



SHAKING	Not Felt	Weak	Light	Moderate	Strong	Very Strong	Severe	Violent	Extreme
DAMAGE	Note	None	None	Very Light	Light	Moderate	Moderate/Heavy	Heavy	Very Heavy
PGA (%g)	<0.05	0.3	2.76	6.2	11.5	21.5	40.1	74.7	>139
PGV (cm/s)	<0.02	0.13	1.41	4.65	9.64	20	41.4	85.8	>178
INTENSITY	1	2-3	4	5	6	7	8	9	10



● 5 Dec '24 M 7.0 ● 1 Sept '94 M 7.1 Seismicity (USGS - 1 century)
 Seismicity (USGS - 1 month)
 magnitude
 ● 0 - 1
 ● 2
 ● 3
 ● 4
 ● 5
 ● 6
 ● 7

○ 7.0 - 7.5
 ○ 7.6 - 8.2
 ■ Populated Place
 — Fault (USGS)

Elevation
 High (red) to Low (green)
Depth
 Shallow (blue) to Deep (purple)

Depth to Slab (km)
 0 to 700 km scale

0 5 10 Miles
 0 7.5 15 km

Elevation:
 Bathy: Ryan et al., 2009,
 DOI: 10.1029/2008GC002332
 Topo: USGS 3DEP

GEM
 GLOBAL EARTHQUAKE MODEL
 working together to assess risk
 Jason R. Patton
 earthjay.com © 2024

USGS
 science for a changing world