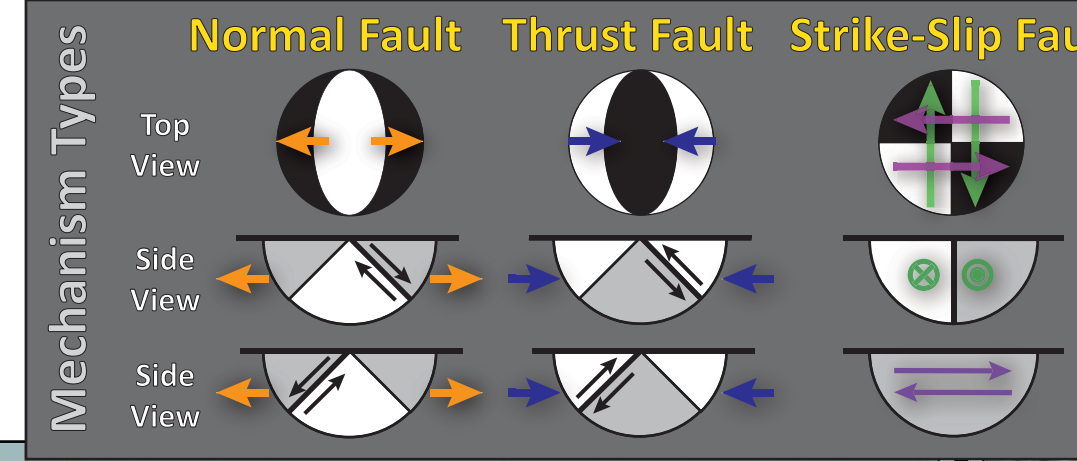
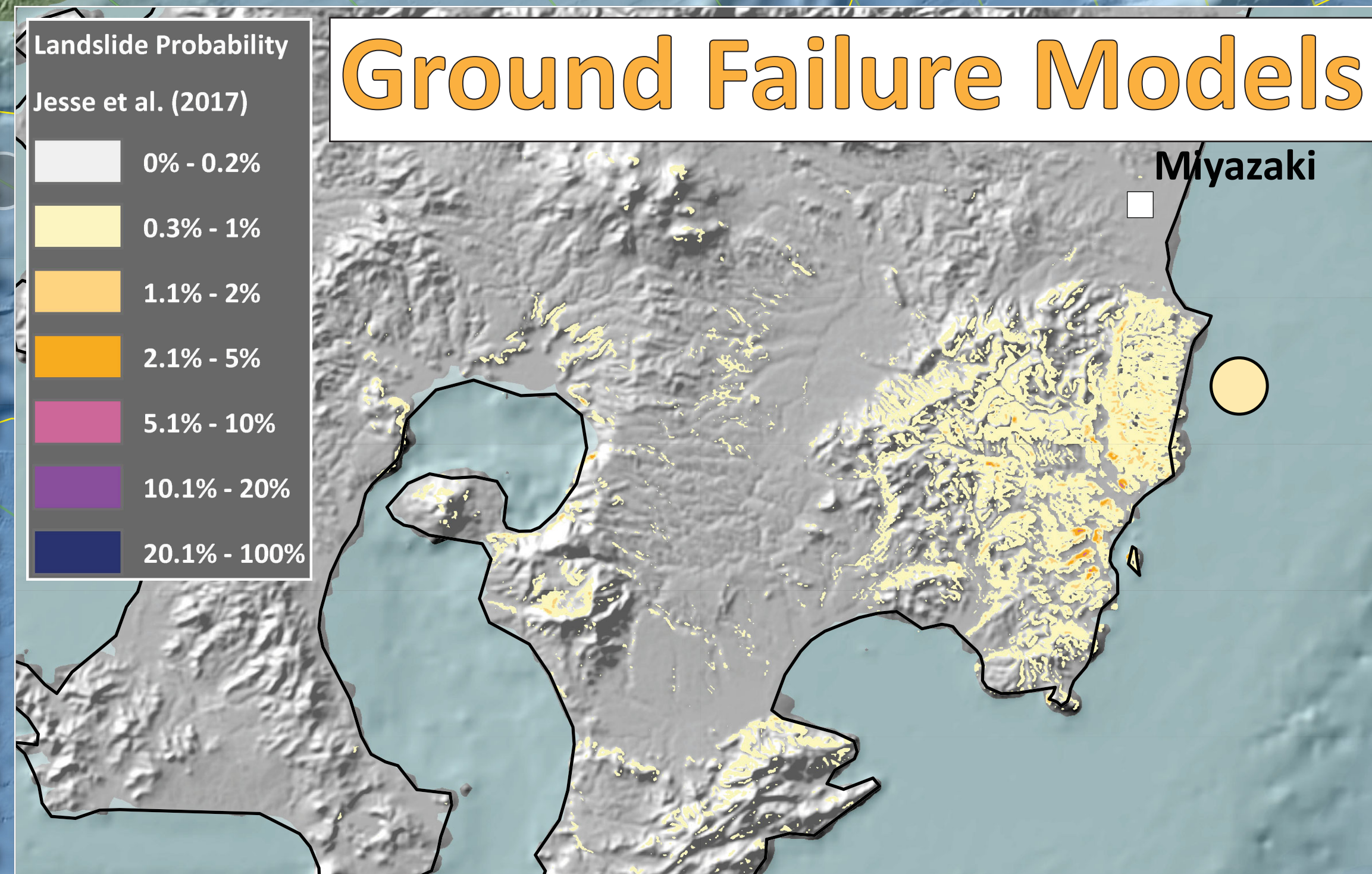
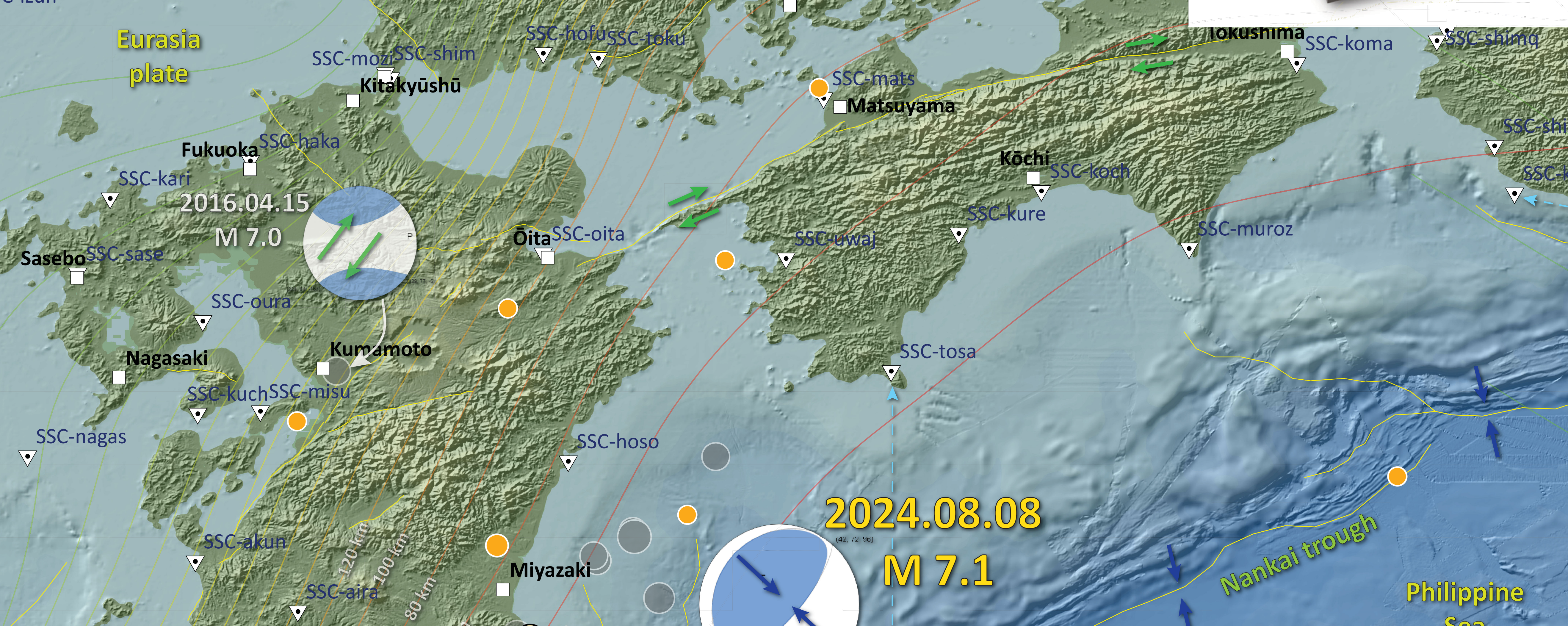
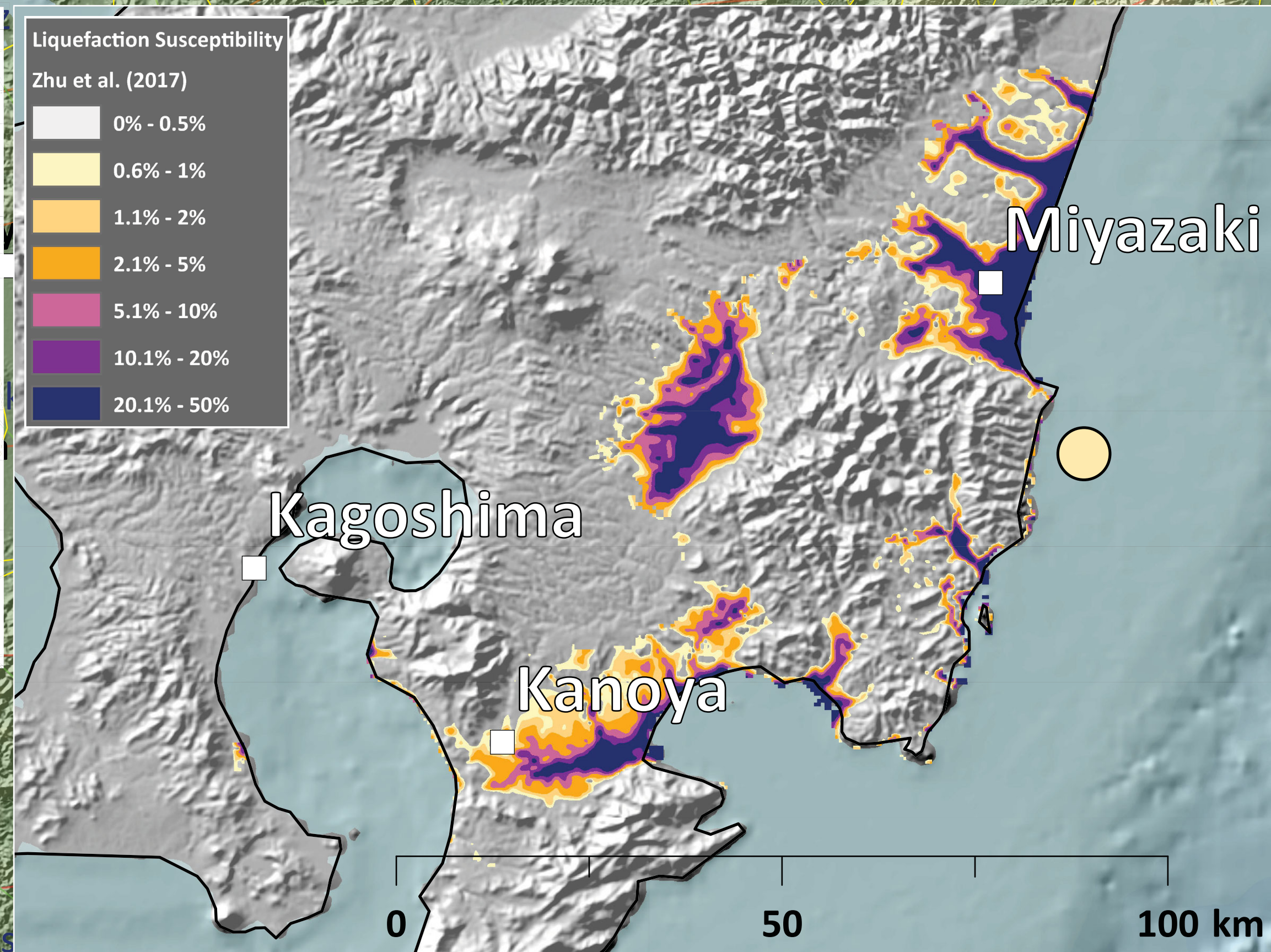
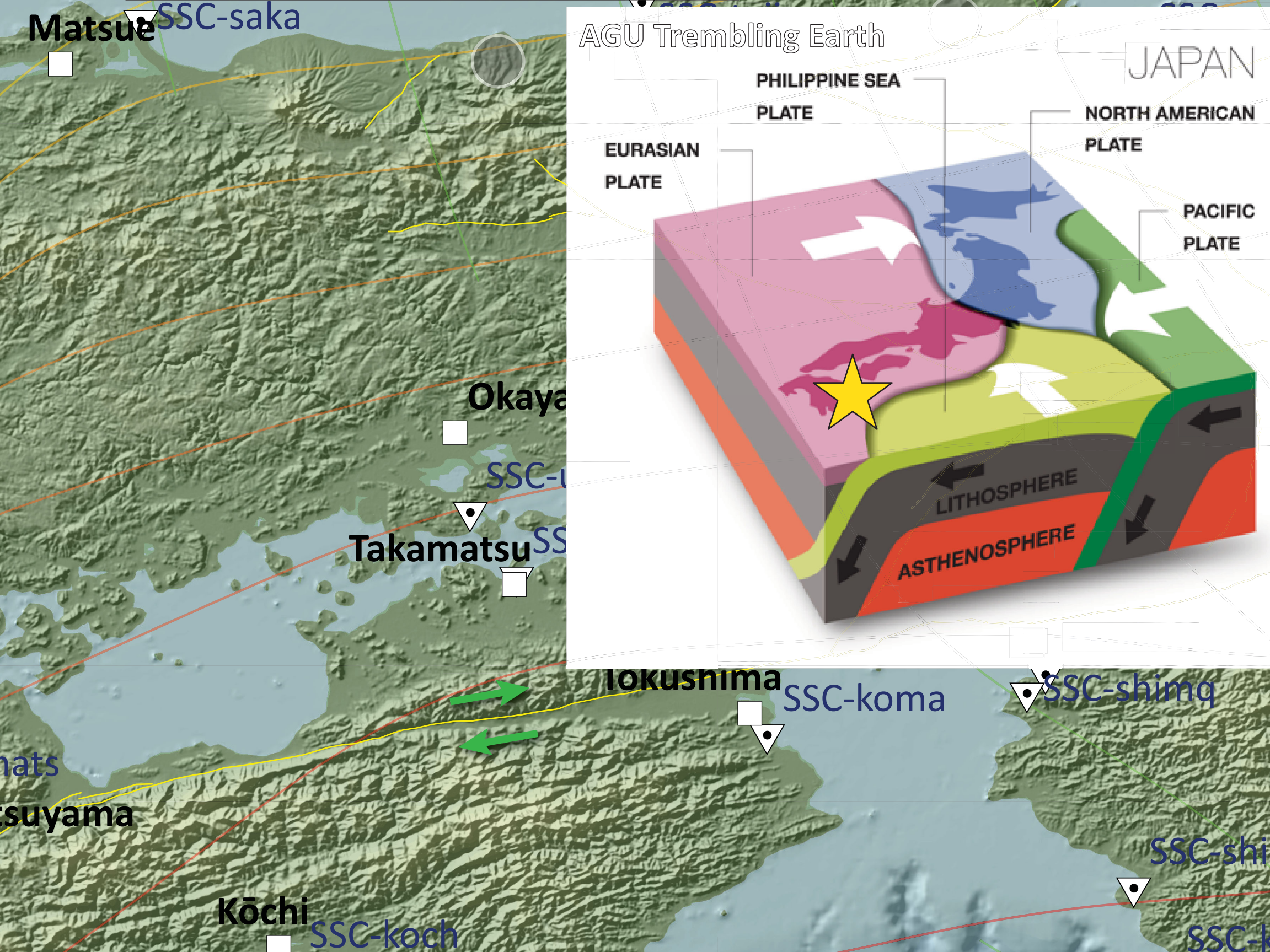
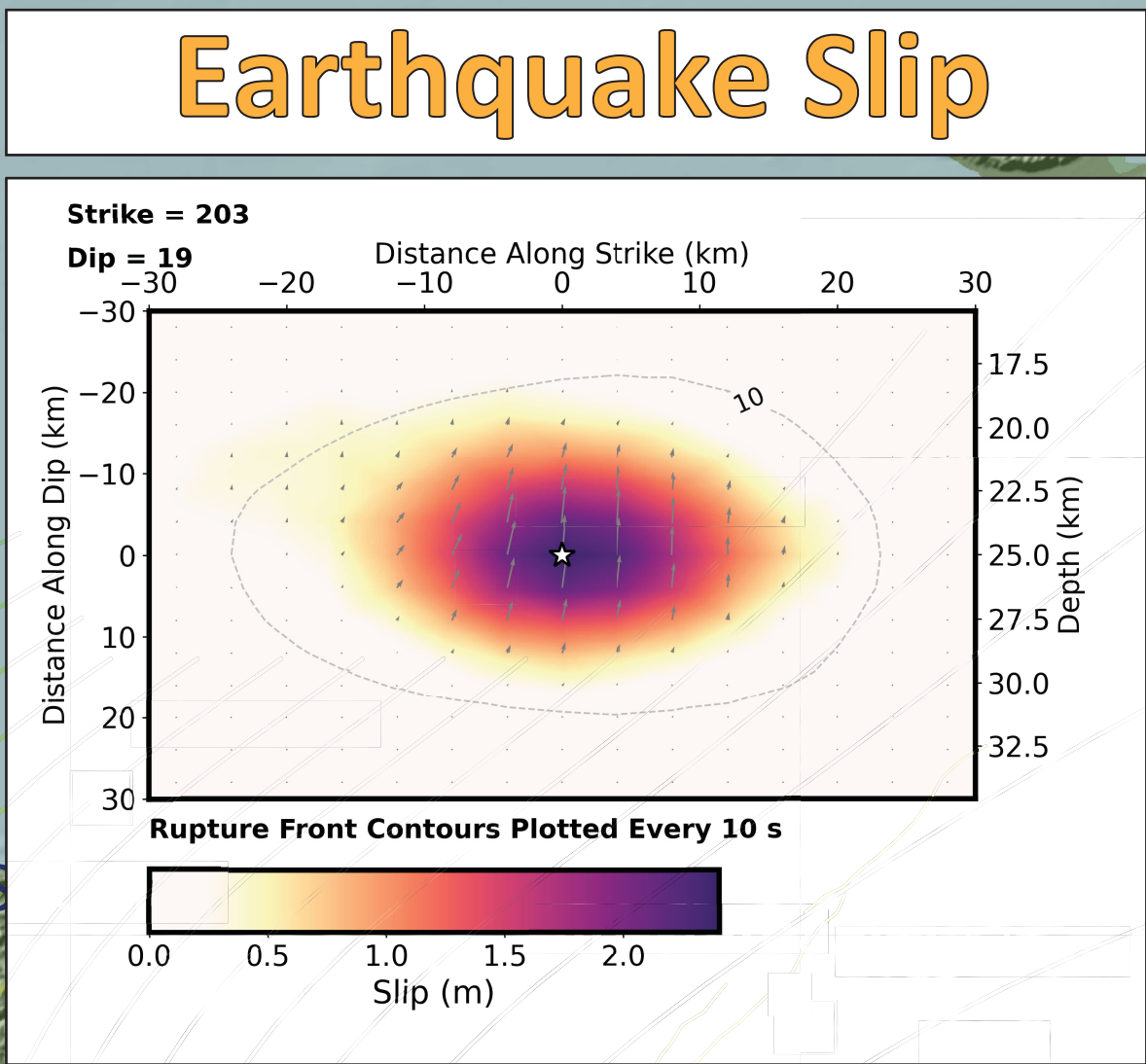
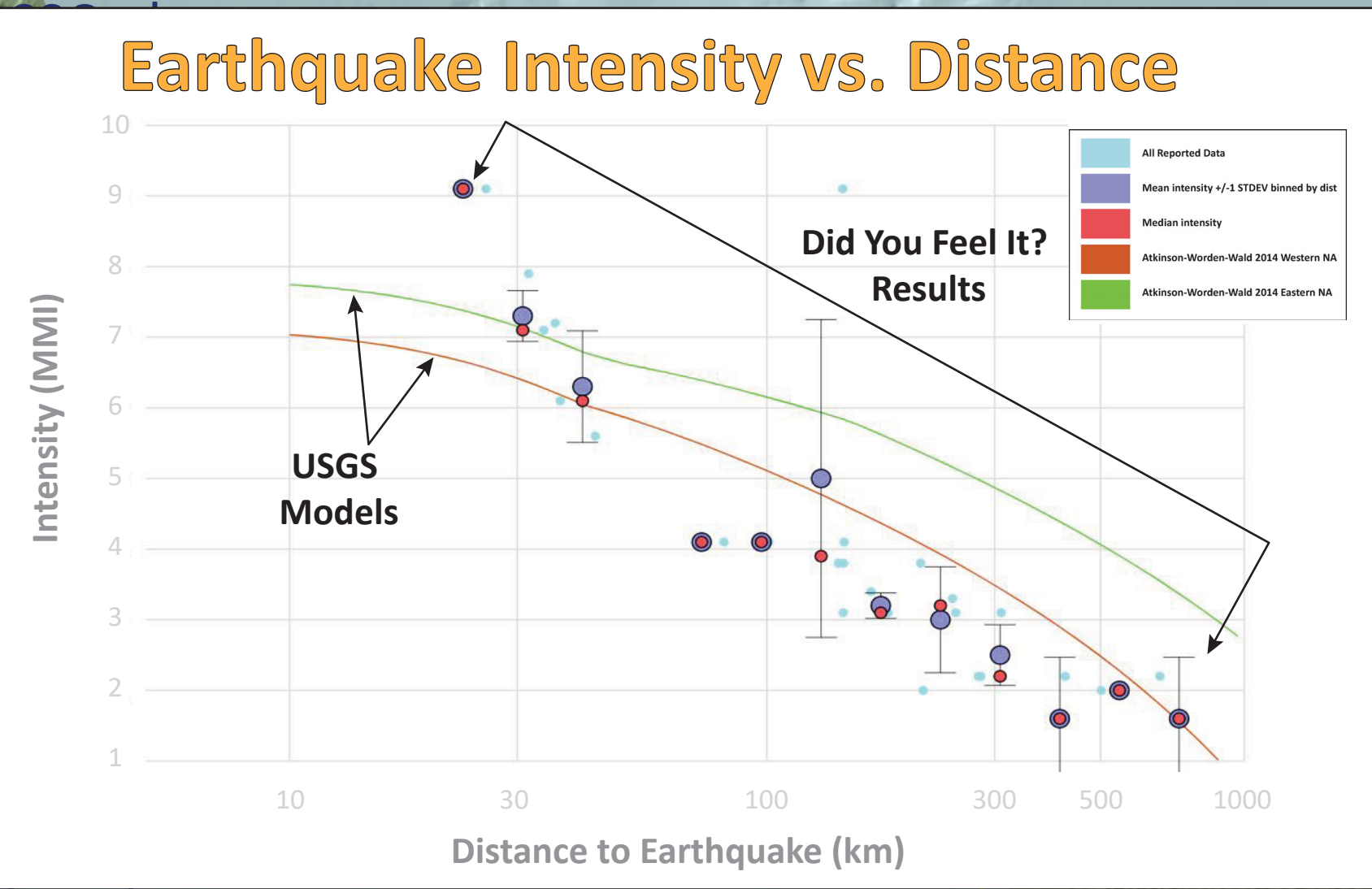
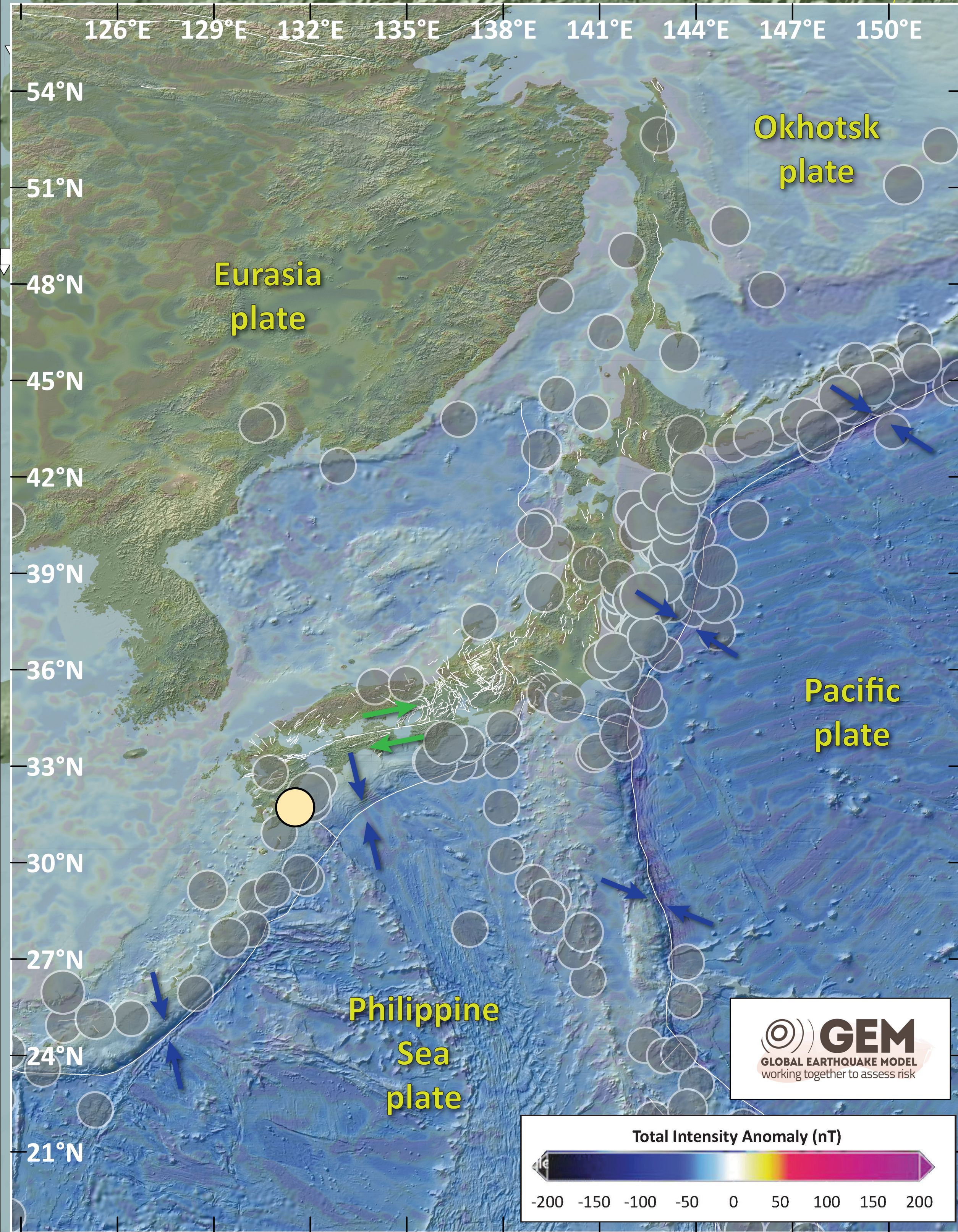


# Earthquake Report: 2024.08.08

## M 7.1 Japan (& USGS Seismicity 1924-2024 M ≥ 7.0)



	Not Felt	Weak	Light	Moderate	Strong	Very Strong	Severe	Violent	Extreme
DAMAGE	Note	None	None	Very Light	Light	Moderate	Moderate/Heavy	Heavy	Very Heavy
PGA (%g)	<0.05	0.3	2.76	6.2	11.5	21.5	40.1	74.7	>139
PGV (cm/s)	<0.02	0.13	1.41	4.65	9.64	20	41.4	85.8	>178
INTENSITY	1	2-3	4	5	6	7	8	9	10



● 8 aug '24 M 7.1    ● 7.1 - 7.5  
 Seismicity (USGS - 3 month)    Seismicity (USGS - 1 century)

magnitude    magnitude  
 ○ 0.0 - 1.0    ○ 7.0 - 7.5  
 ○ 1.1 - 2.0    ○ 7.6 - 8.0  
 ○ 2.1 - 3.0    ○ 8.1 - 8.5  
 ○ 3.1 - 4.0    ○ 8.6 - 9.2  
 ○ 4.1 - 5.0  
 ○ 5.1 - 6.0  
 ○ 6.1 - 7.0

Depth to Slab (km)  
 0 50 100 150 200 250 300 350 400 450 500 550 600 650 700

Elevation    Depth  
 High    Shallow  
 Low    Deep

Fault    City    Tide Gage

Topography: Ryan et al., 2009  
 doi:10.1029/2008GC002332.  
 Fault (AFEAD v2021)

Jason R. Patton  
 earthjay.com © 2024

### Tsunami

