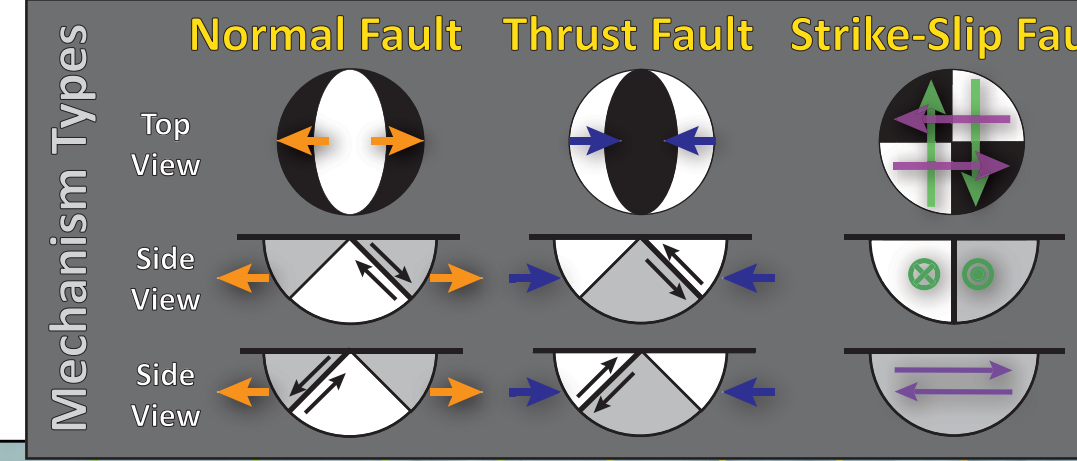
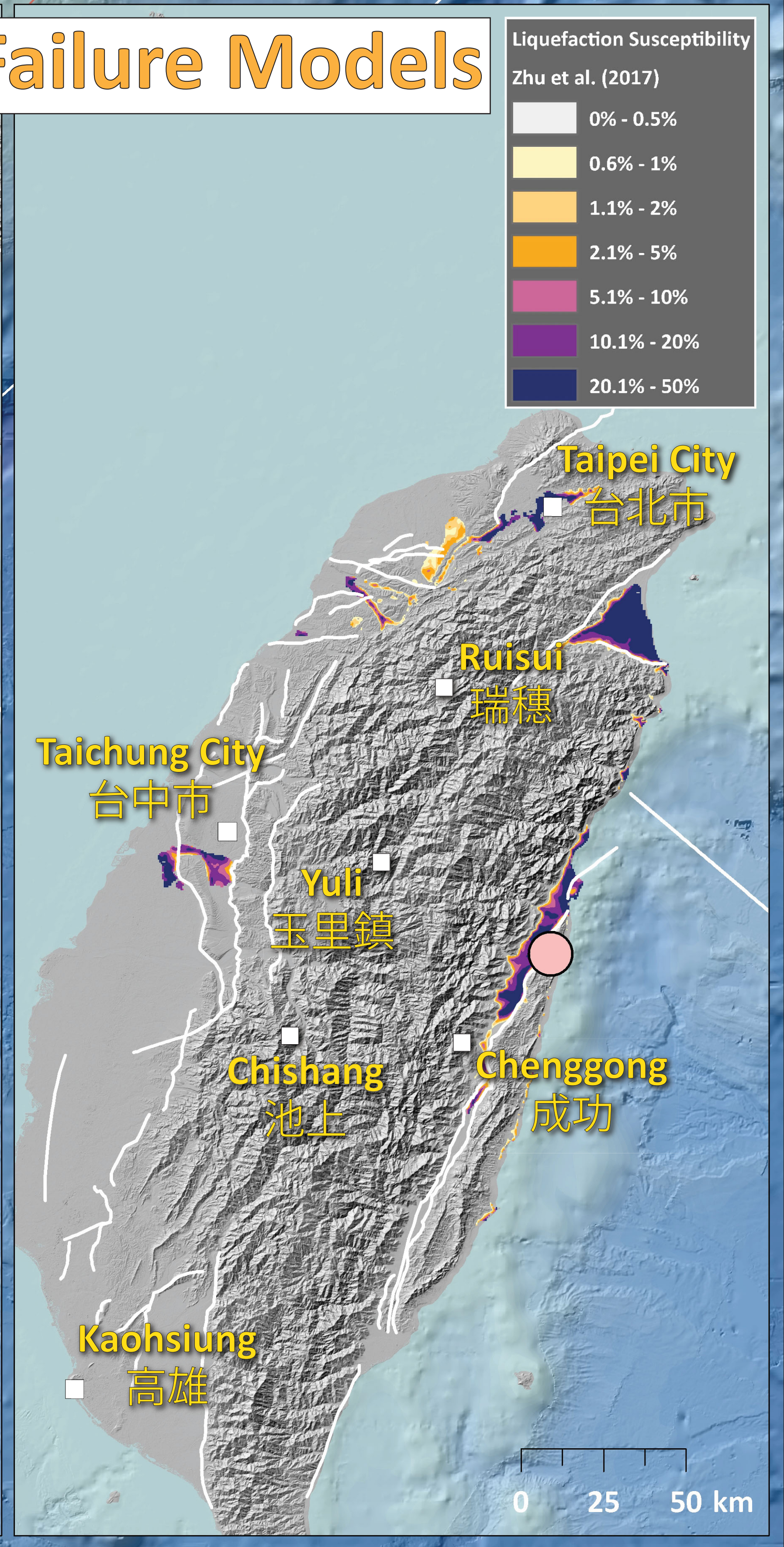
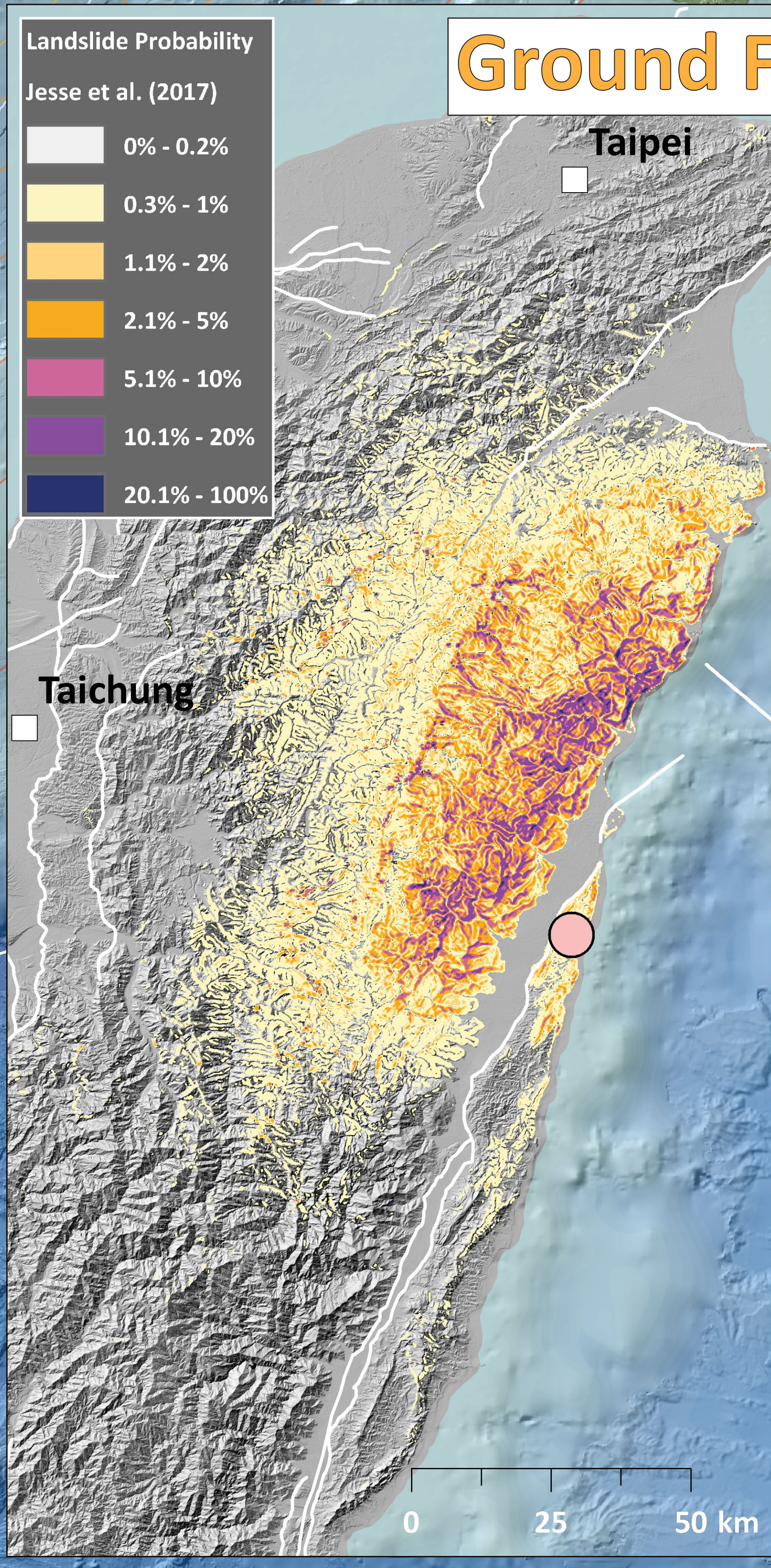
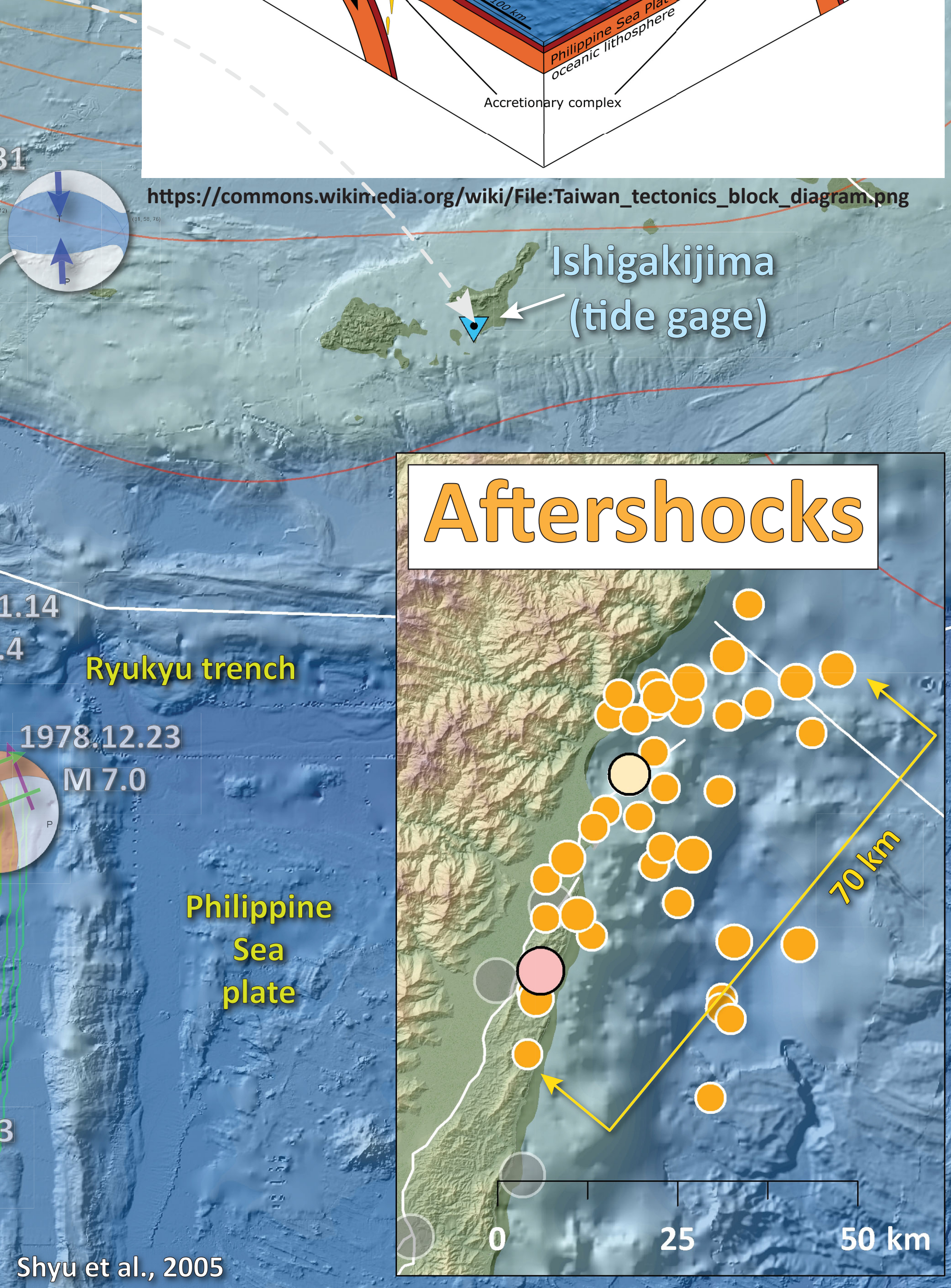
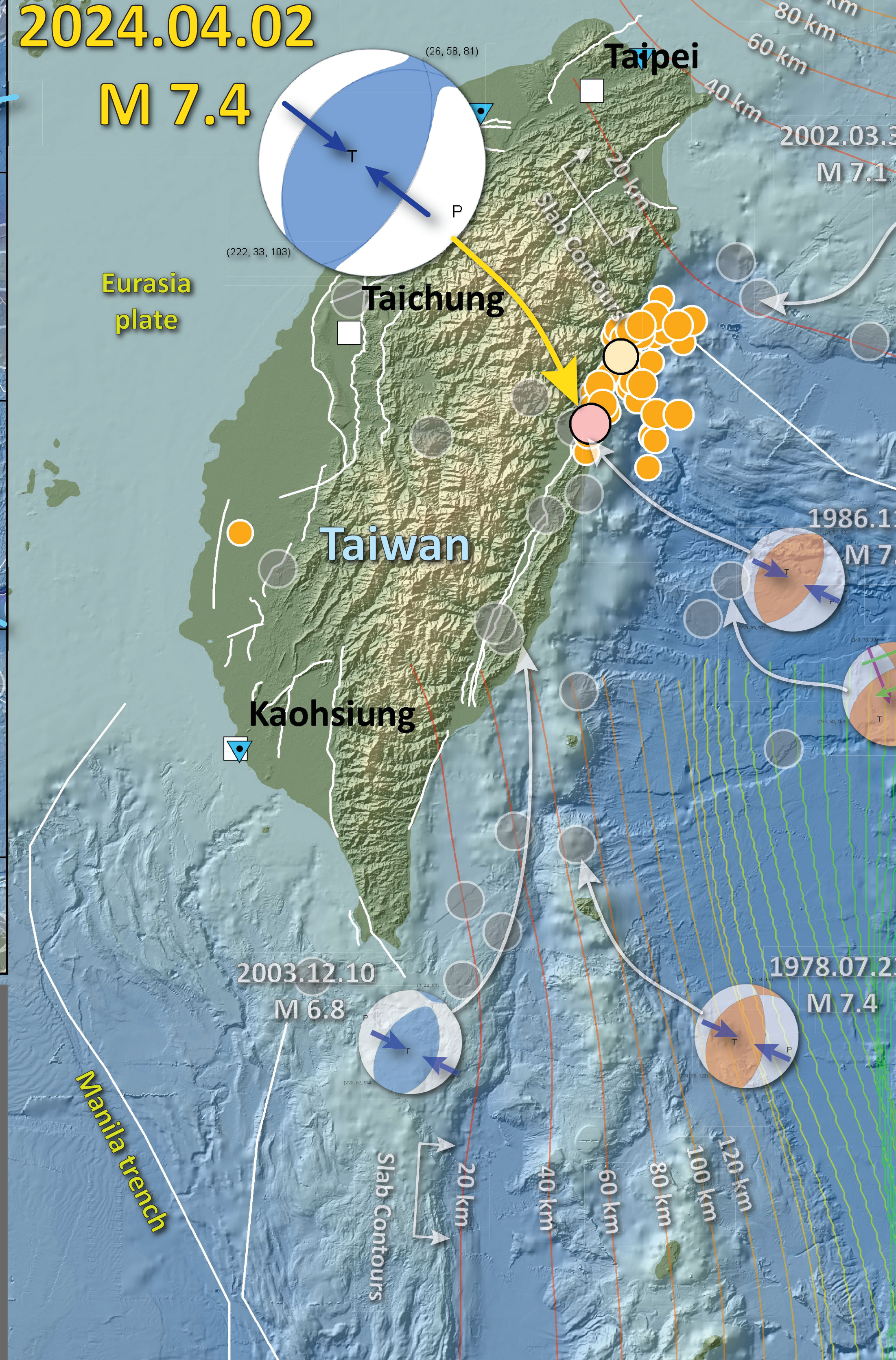
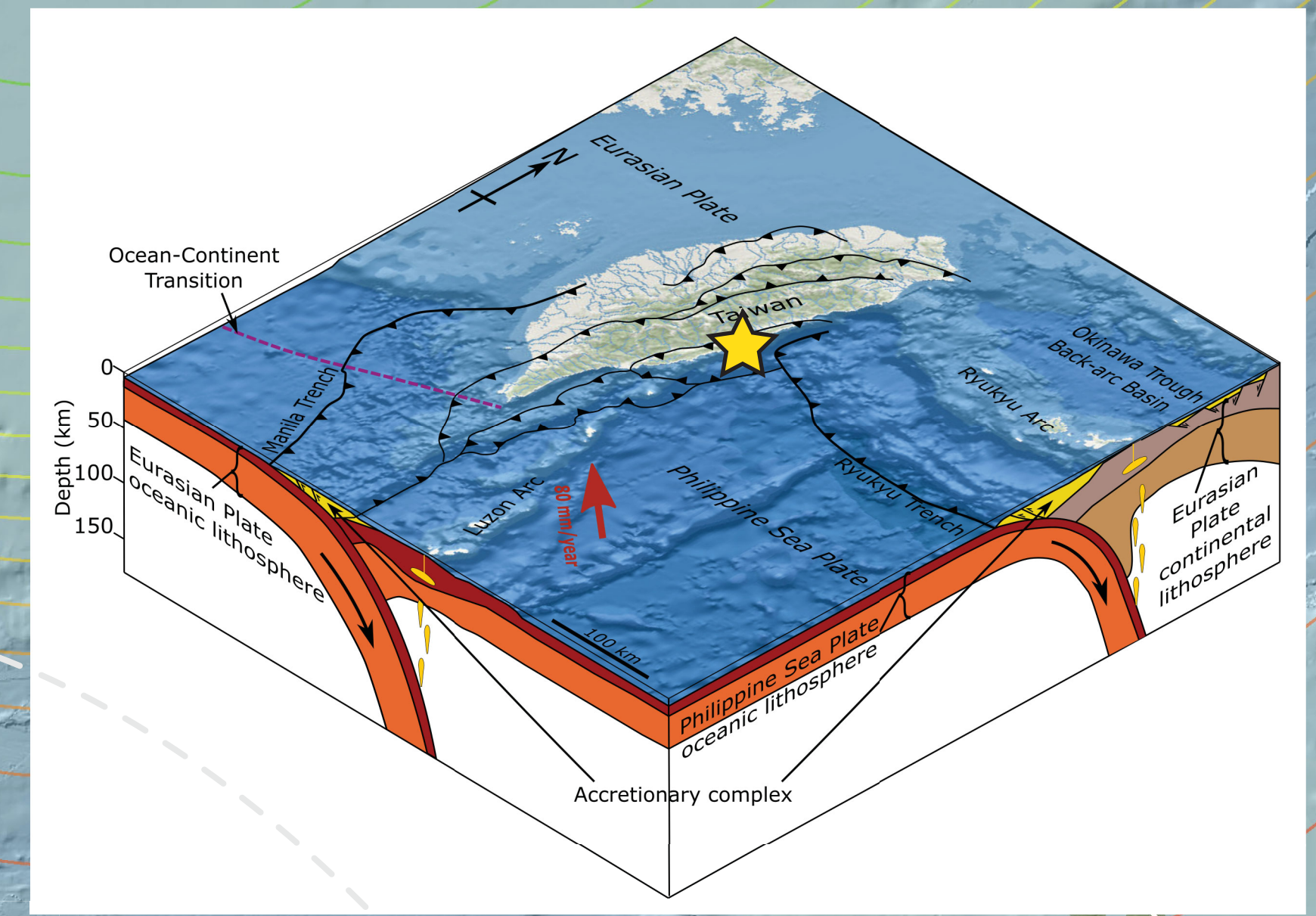
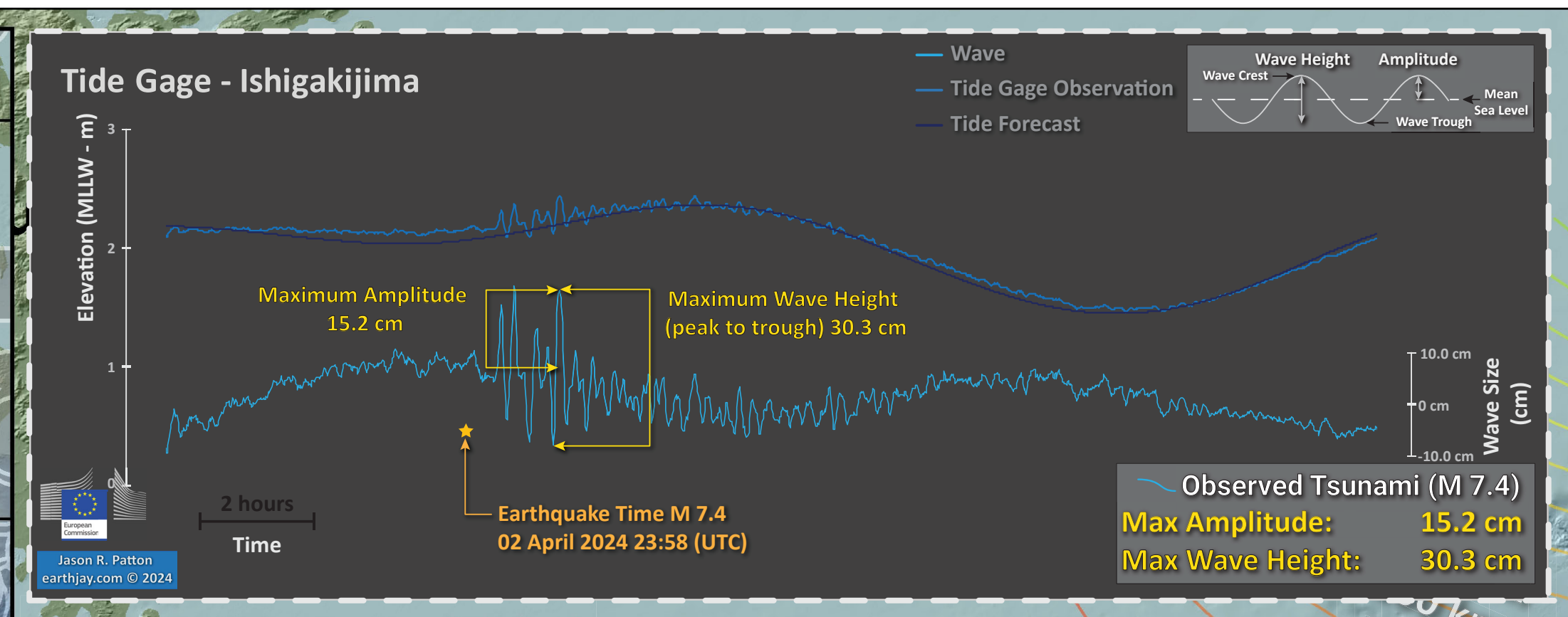
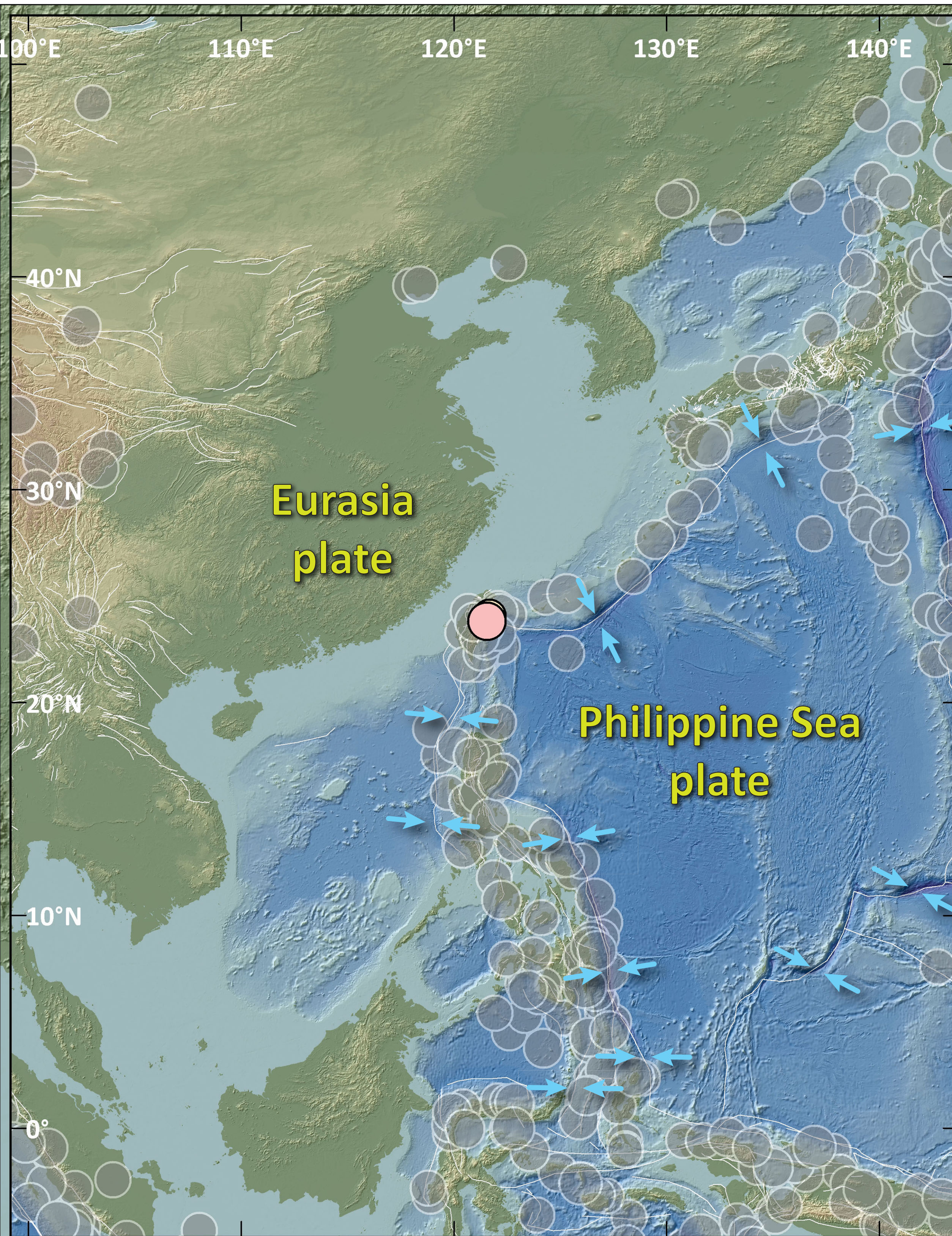


Earthquake Report: 2024.04.02

M 7.4 Taiwan (& USGS Seismicity 1924-2024 M ≥ 7.0)



SHAKING	Not Felt	Weak	Light	Moderate	Strong	Very Strong	Severe	Violent	Extreme
DAMAGE	Note	None	None	Very Light	Light	Moderate	Moderate/Heavy	Heavy	Very Heavy
PGA (%g)	<0.05	0.3	2.76	6.2	11.5	21.5	40.1	74.7	>139
PGV (cm/s)	<0.02	0.13	1.41	4.65	9.64	20	41.4	85.8	>178
INTENSITY	1	2-3	4	5	6	7	8	9	10



● 2 Apr. '24 M 7.4
● 2 Apr. '24 M 6.5
 Seismicity (USGS - 3 day) magnitude
 Seismicity (USGS - 1 century) magnitude
 Fault: GEM, Populated Place, Tide Gage
 Elevation: High (red), Low (green)
 Depth: Shallow (blue), Deep (purple)
 Topography: Ryan et al., 2009 doi:10.1029/2008GC002332.
 Depth to Slab (km): 0 to 700
 Jason R. Patton earthjay.com © 2024
 USGS science for a changing world

