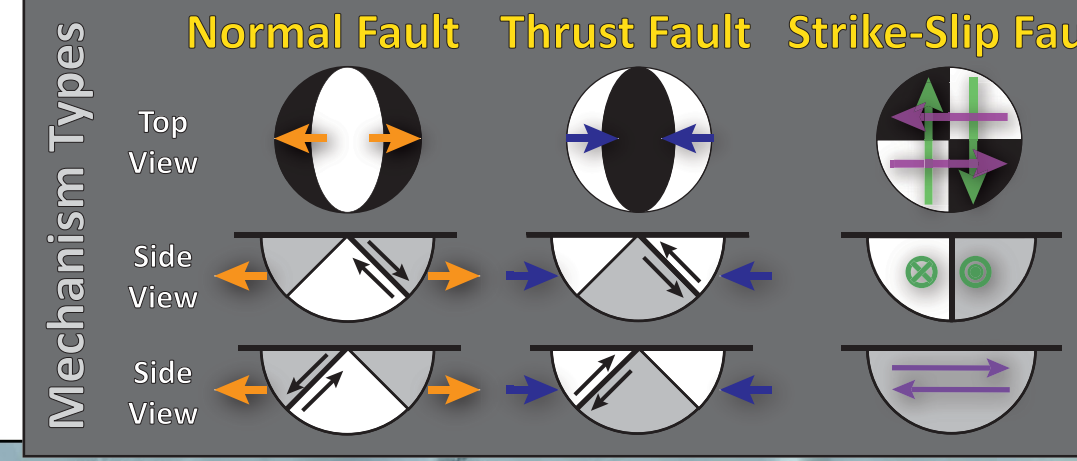
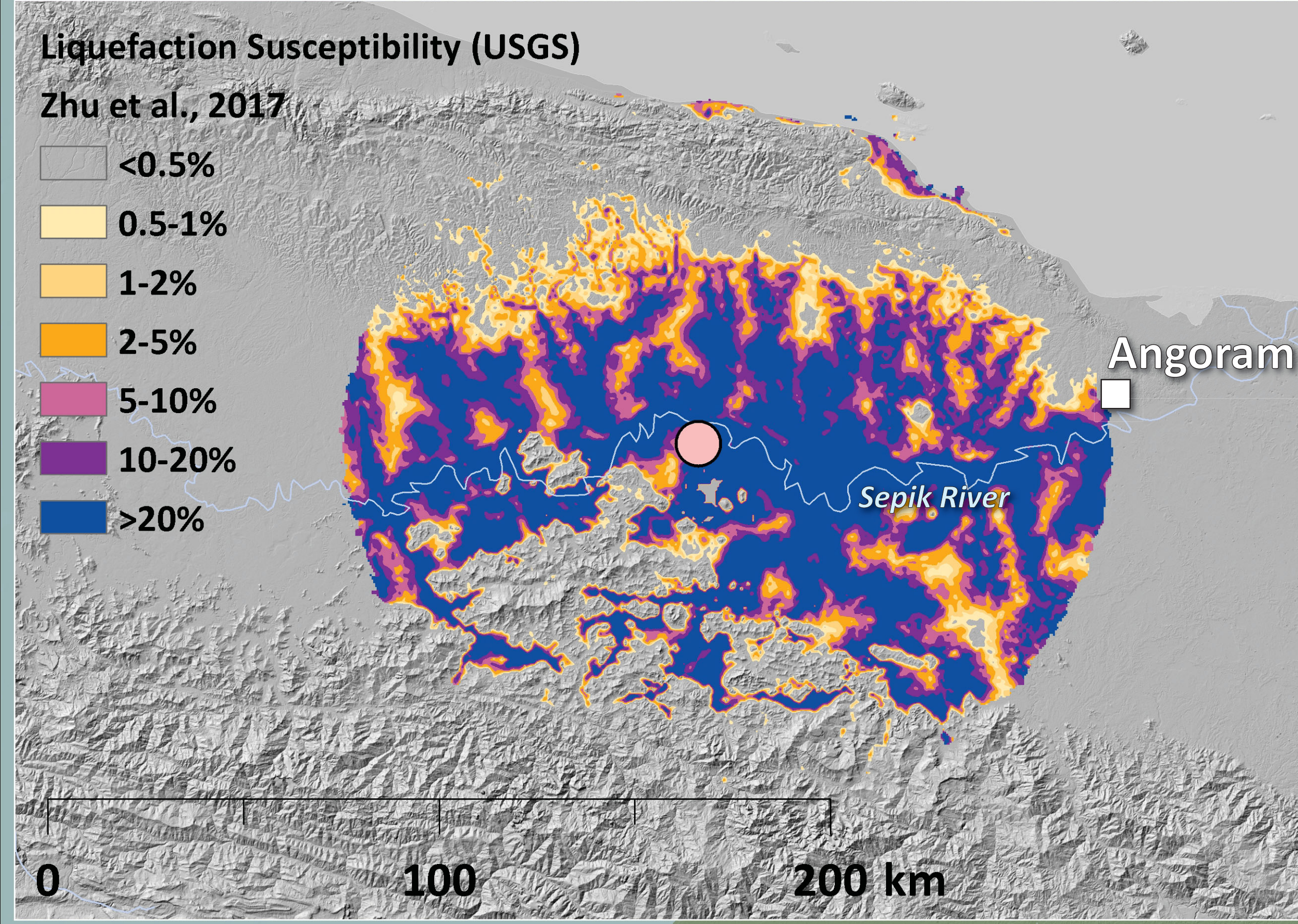
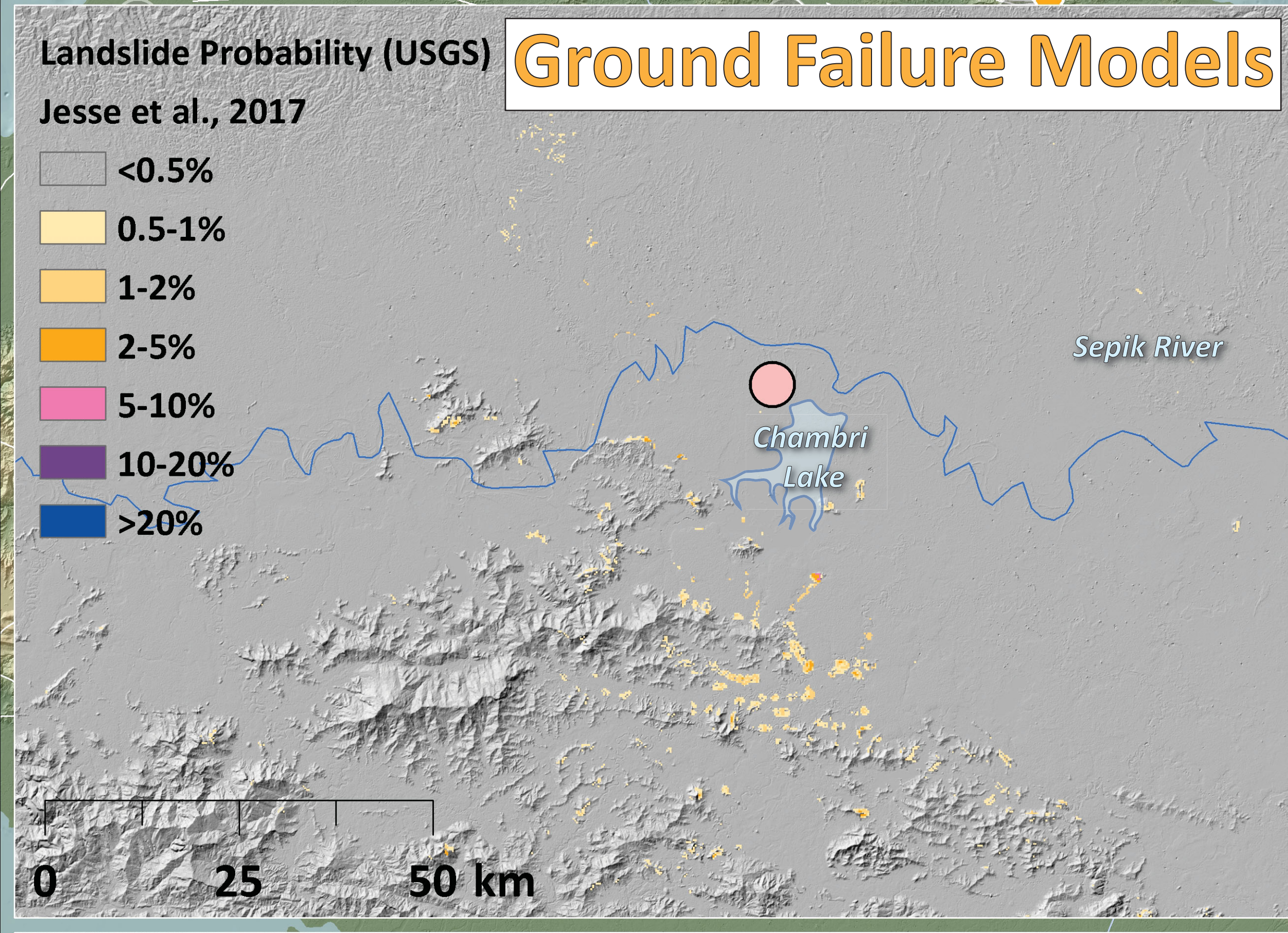


Earthquake Report: 2024.03.23

M 6.9 Papua New Guinea (& USGS Seismicity 1924-2024 M ≥ 6.5)



SHAKING	Not Felt	Weak	Light	Moderate	Strong	Very Strong	Severe	Violent	Extreme
DAMAGE	Note	None	None	Very Light	Light	Moderate	Moderate/Heavy	Heavy	Very Heavy
PGA (%g)	<0.05	0.3	2.76	6.2	11.5	21.5	40.1	74.7	>139
PGV (cm/s)	<0.02	0.13	1.41	4.65	9.64	20	41.4	85.8	>178
INTENSITY	1	2-3	4	5	6	7	8	9	10



Seismicity (USGS - 100 yr) ● City (Natural Earth)

Seismicity (USGS - 3 month) magnitude

- 6.5 - 7.0
- 7.1 - 7.5
- 7.6 - 8.0
- 8.1 - 8.5
- 8.6 - 9.1

Fault

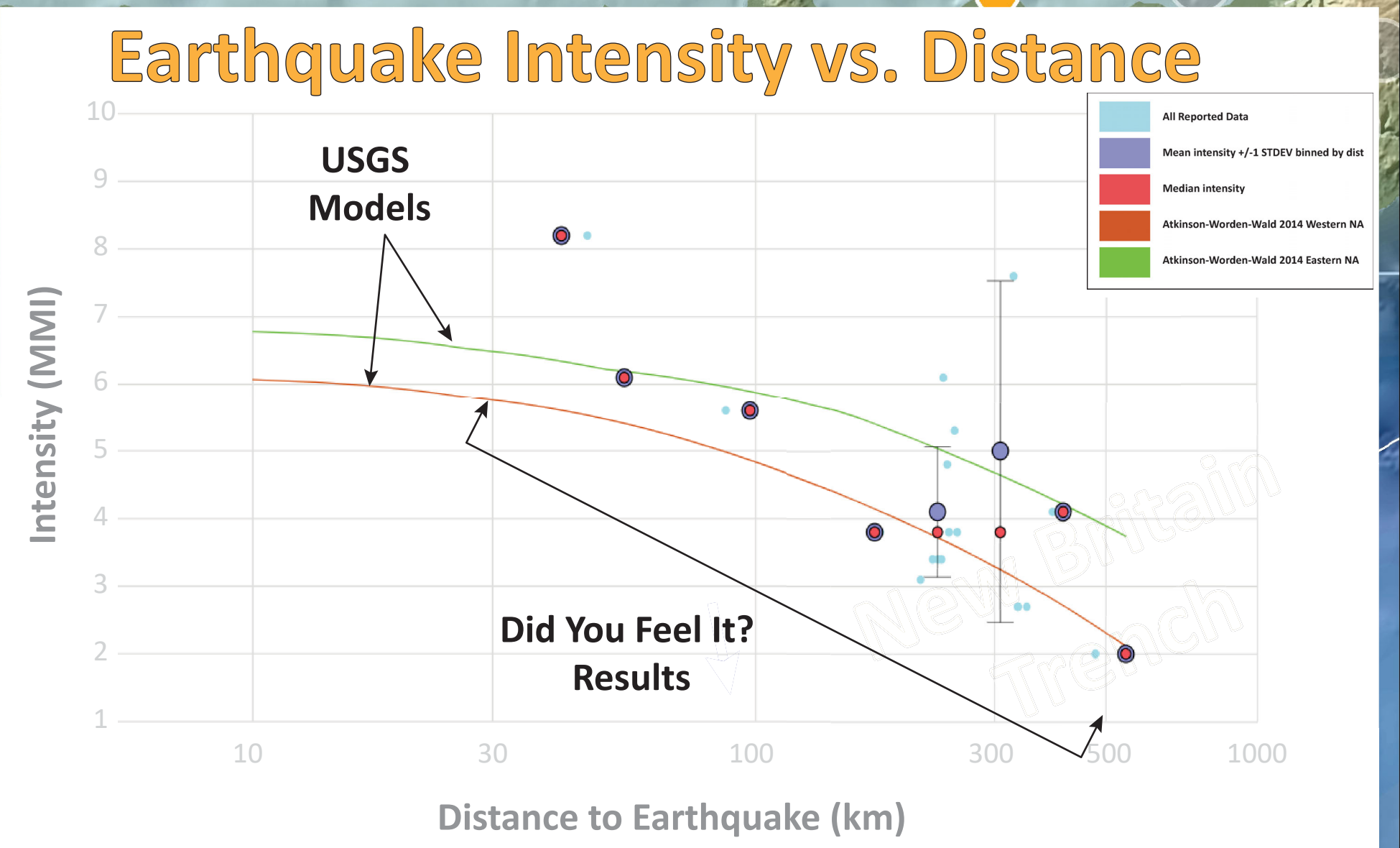
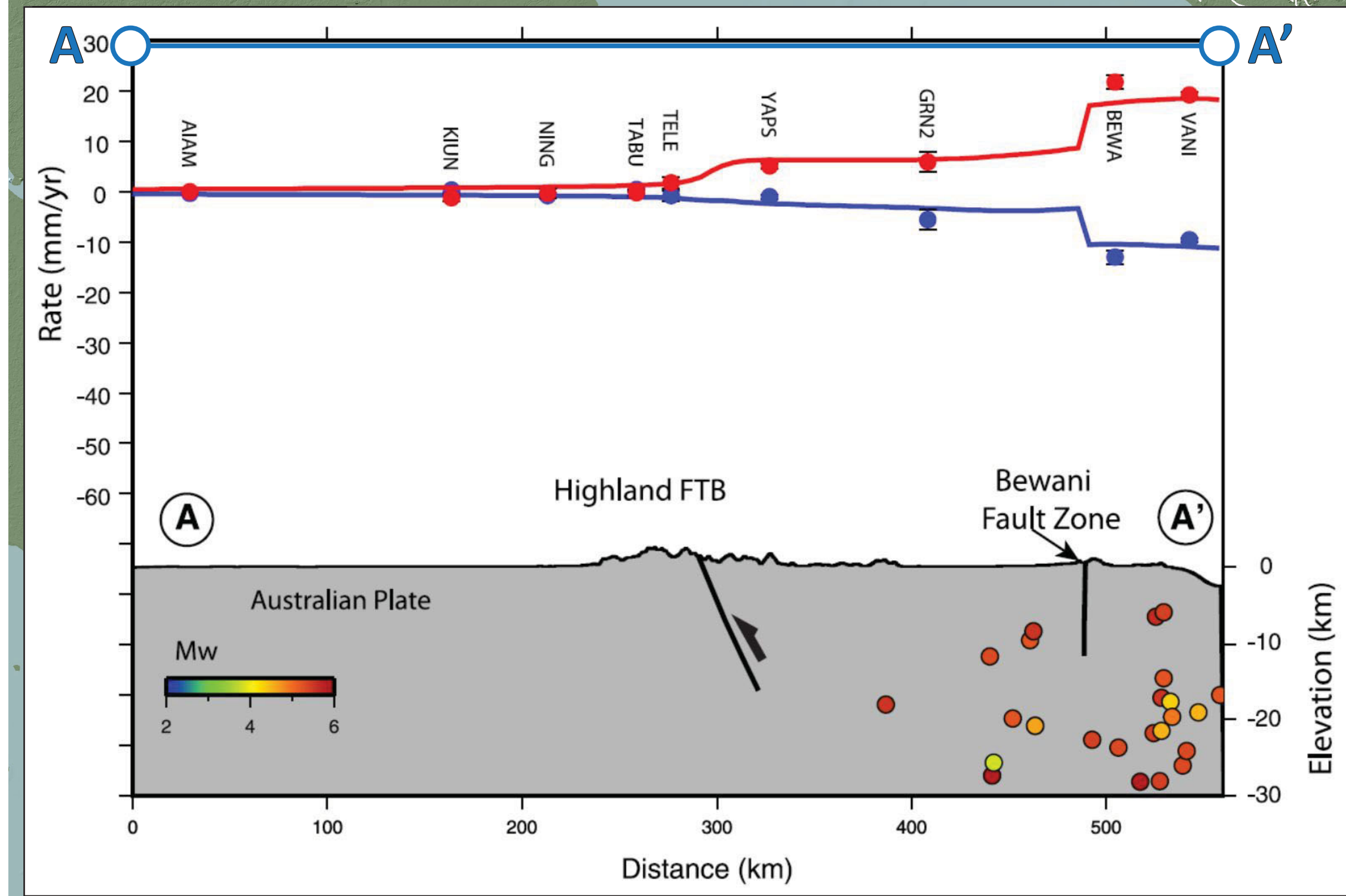
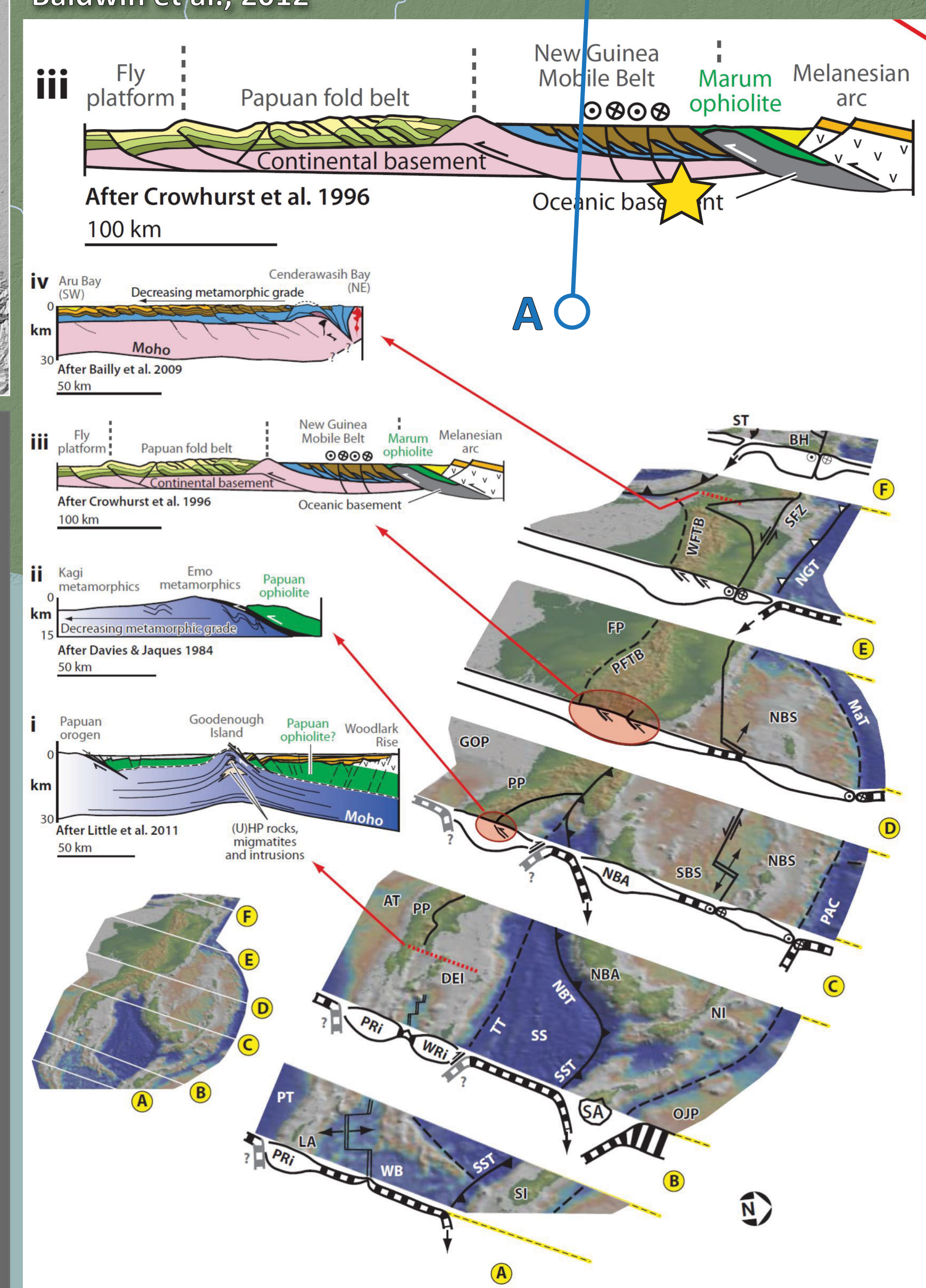
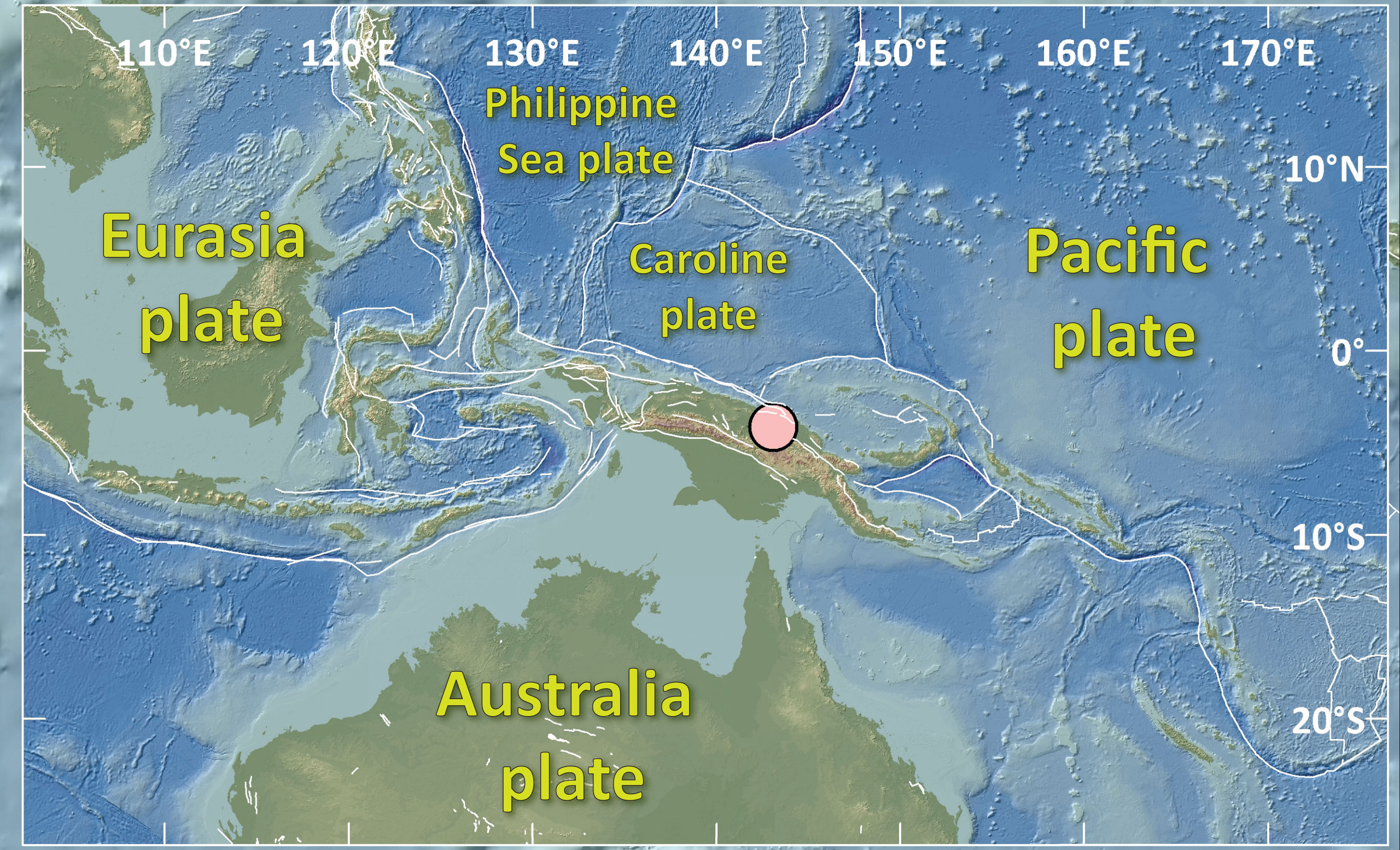
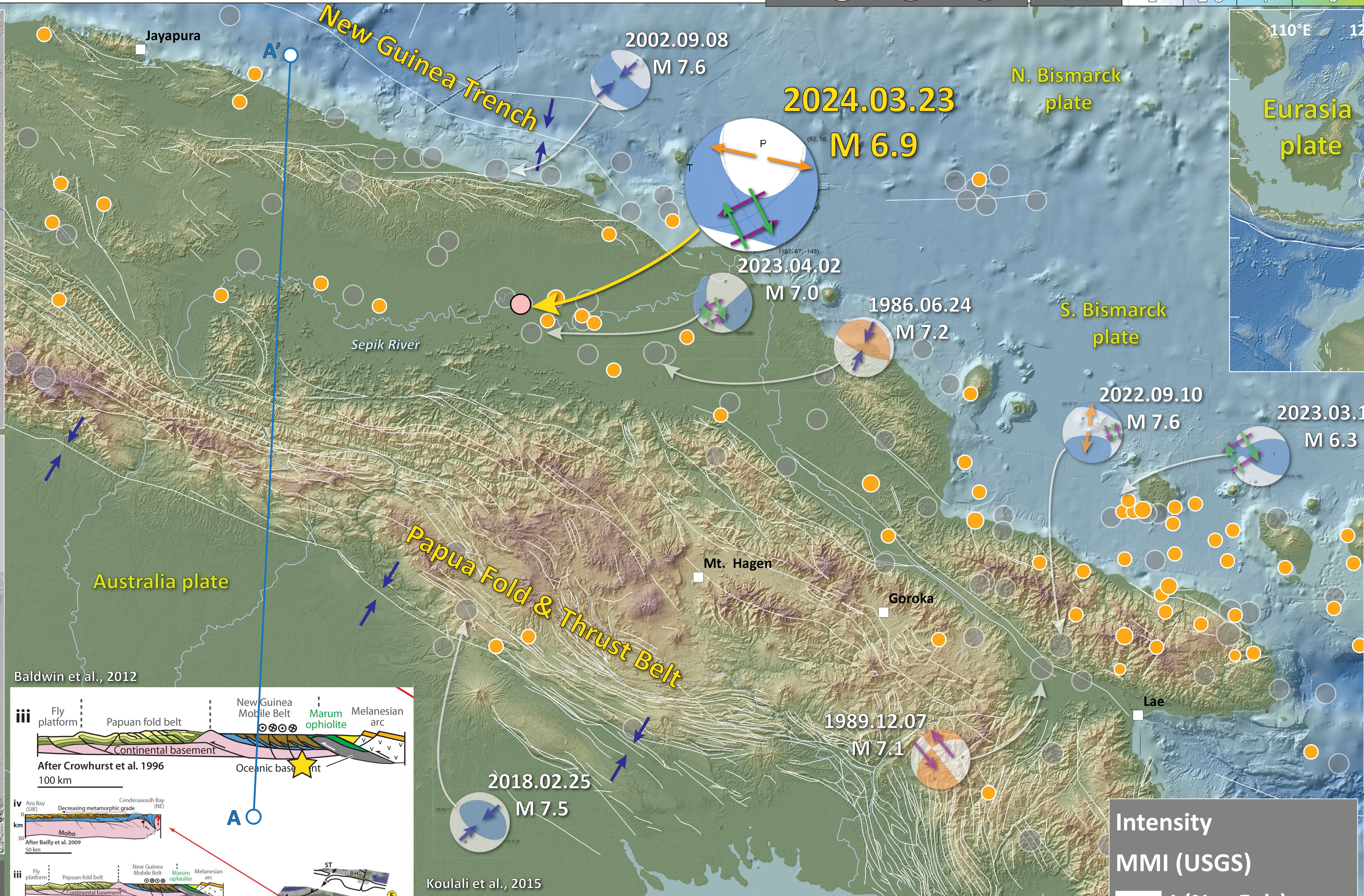
- CCOP
- GEM

Topography: Ryan et al., 2009
doi: 10.1029/2008GC002332.

Elevation High / Low **Depth** Shallow / Deep

USGS

Jason R. Patton
earthjay.com © 2024



Intensity

MMI (USGS)

- I (Not Felt)
- II - III (Weak)
- IV (Light)
- V (Moderate)
- VI (Strong)
- VII (Very Strong)
- VIII (Severe)
- IX (Violent)
- X+ (Extreme)

