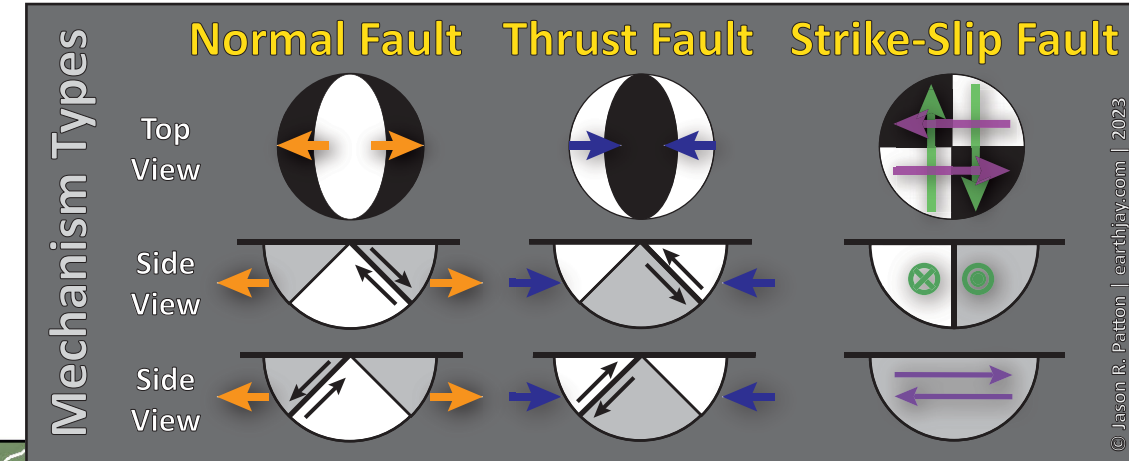
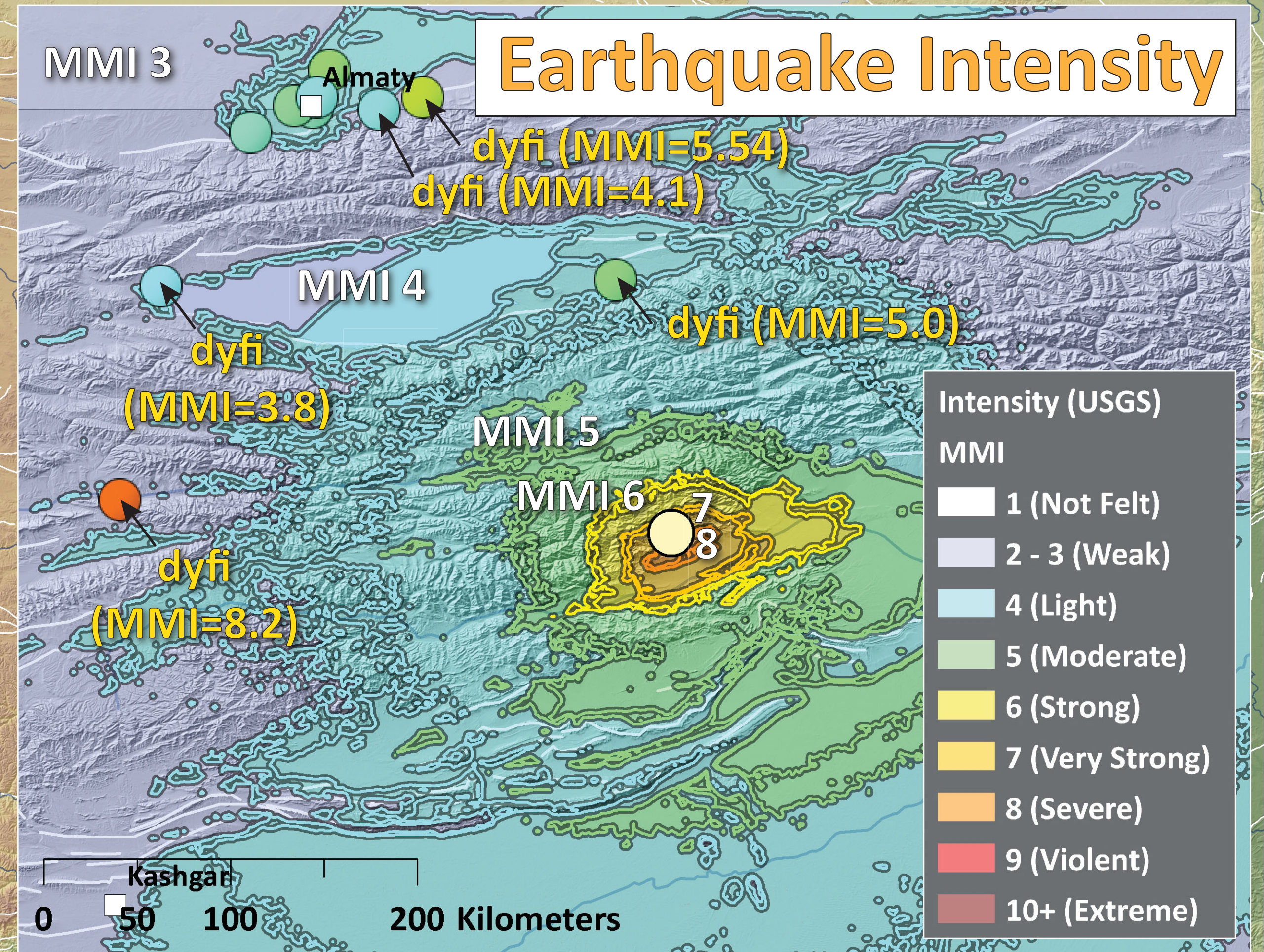
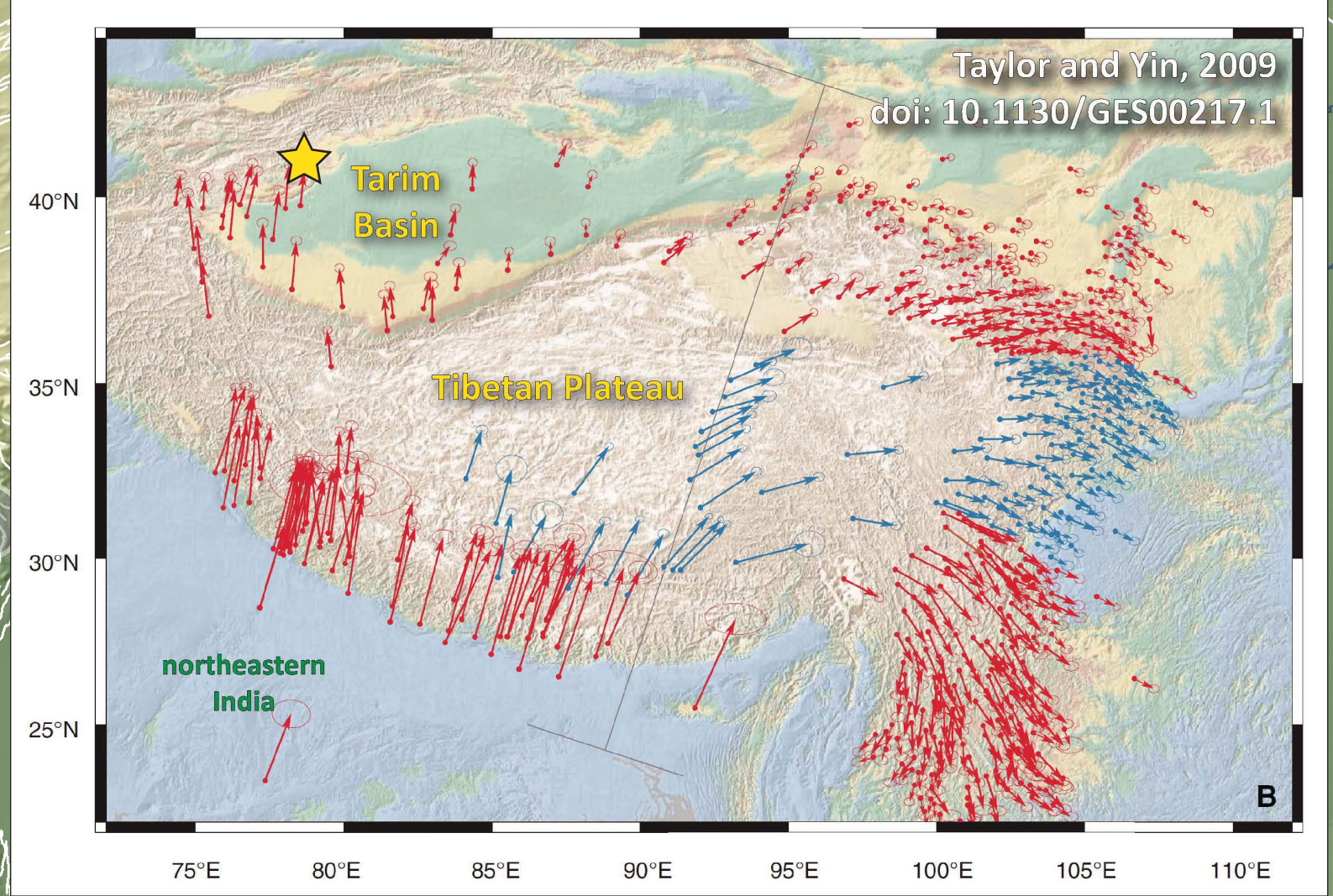
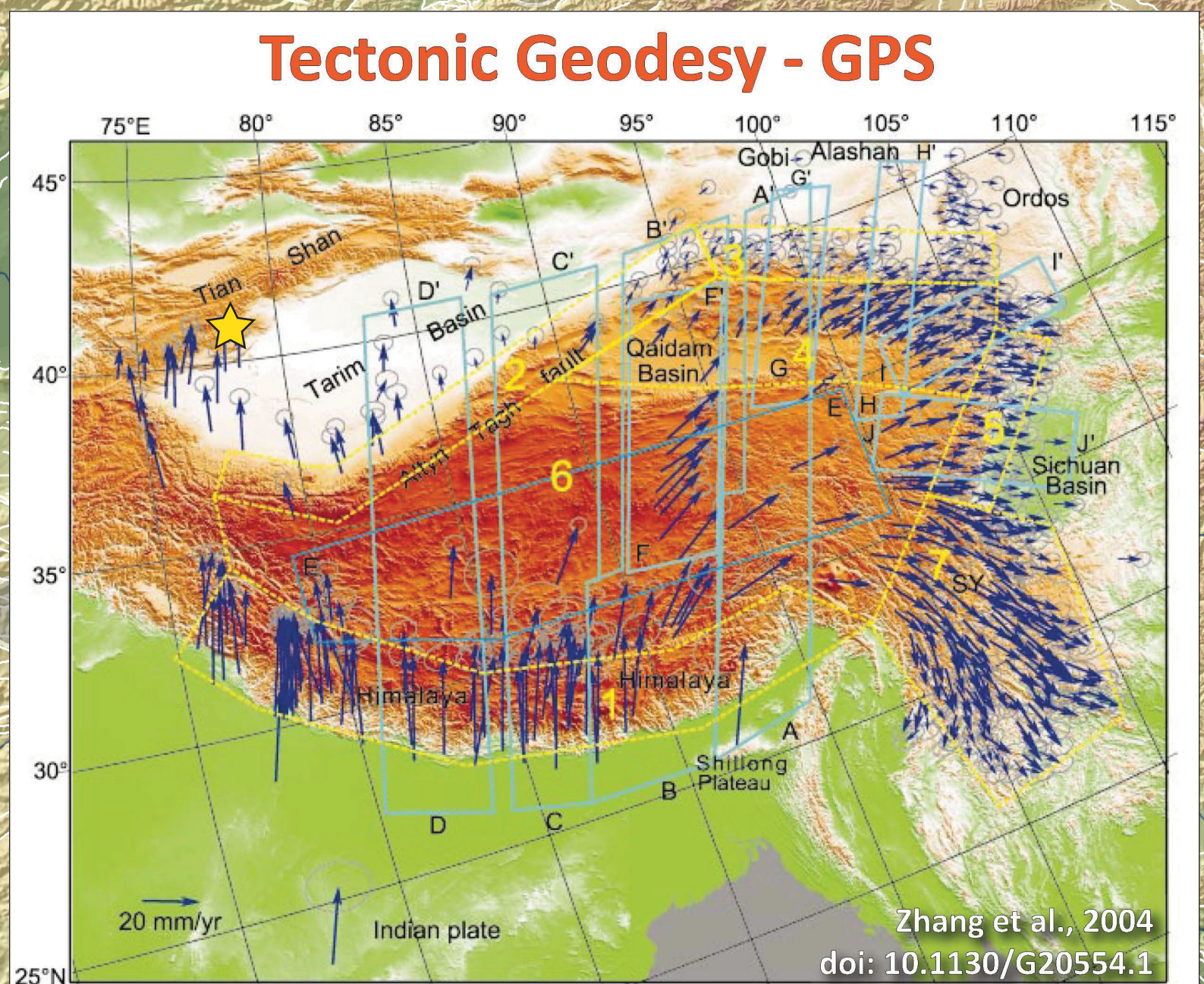
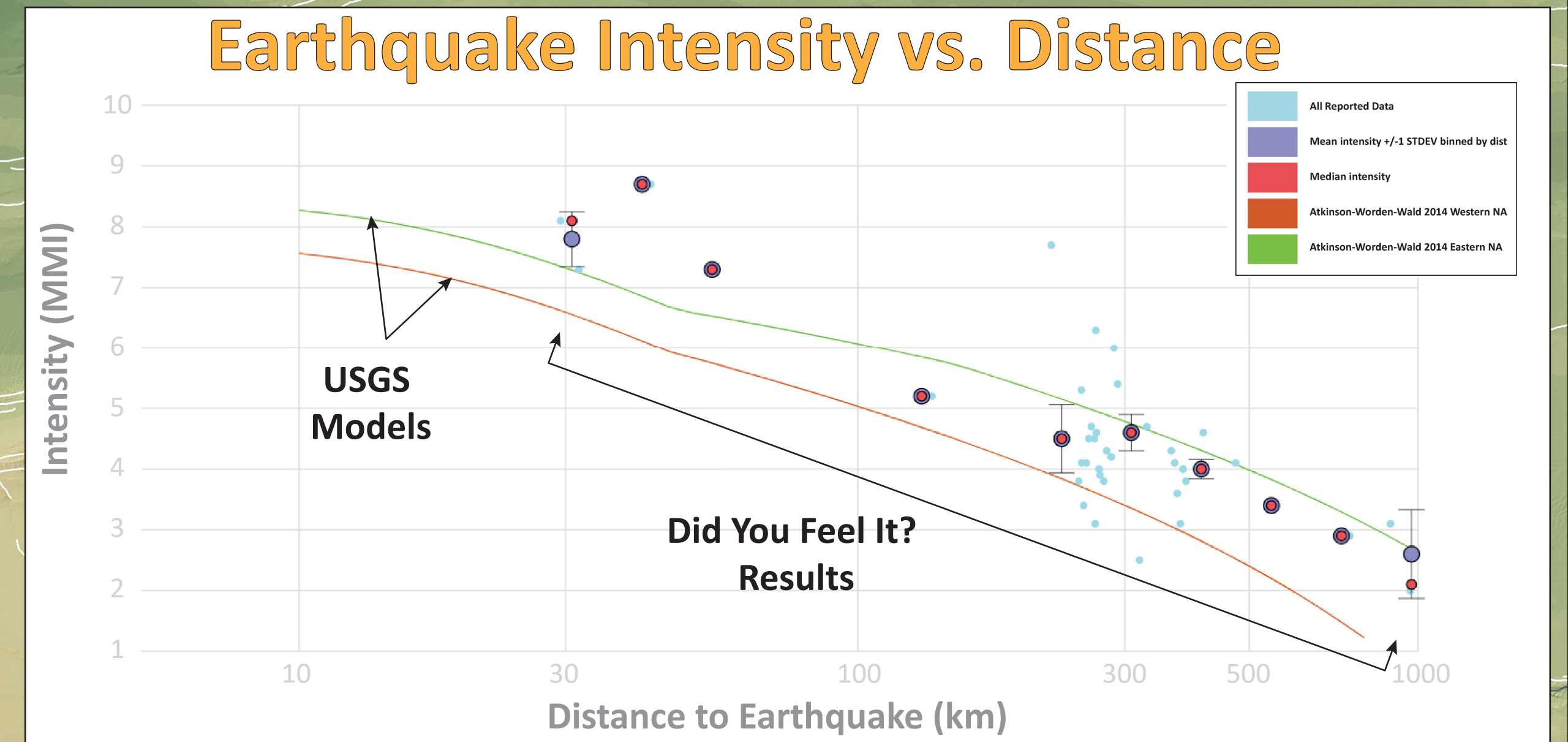
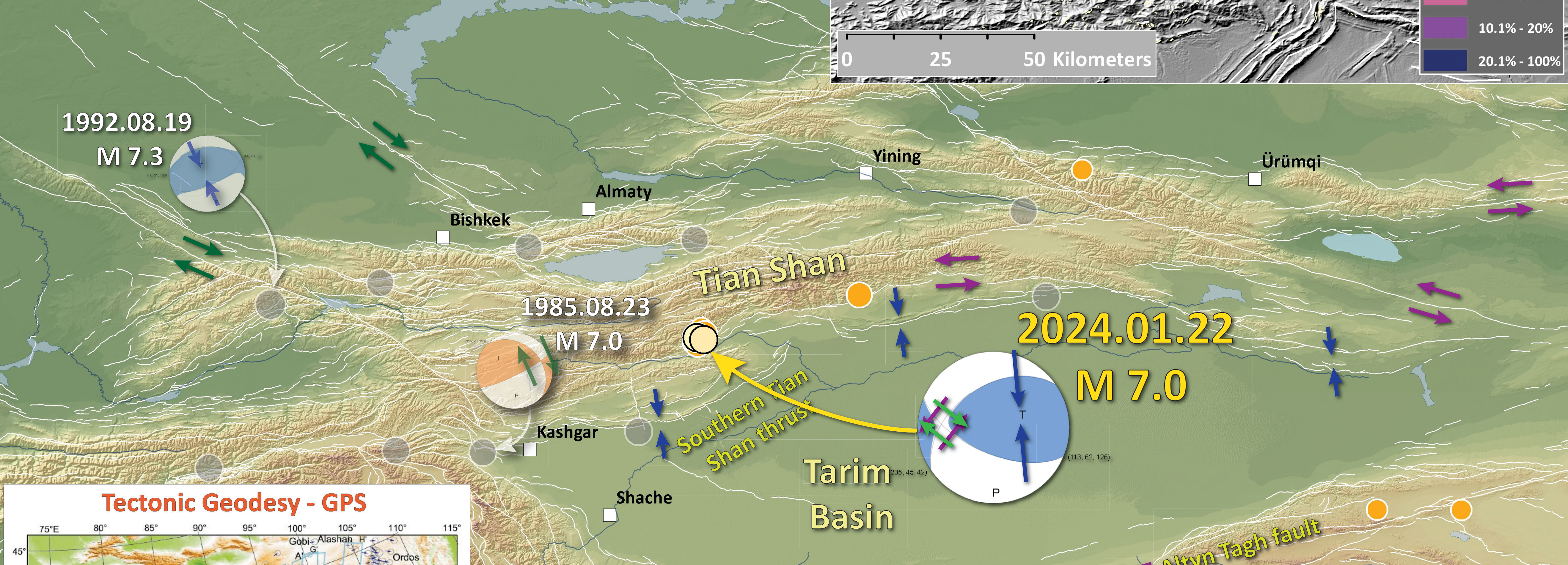
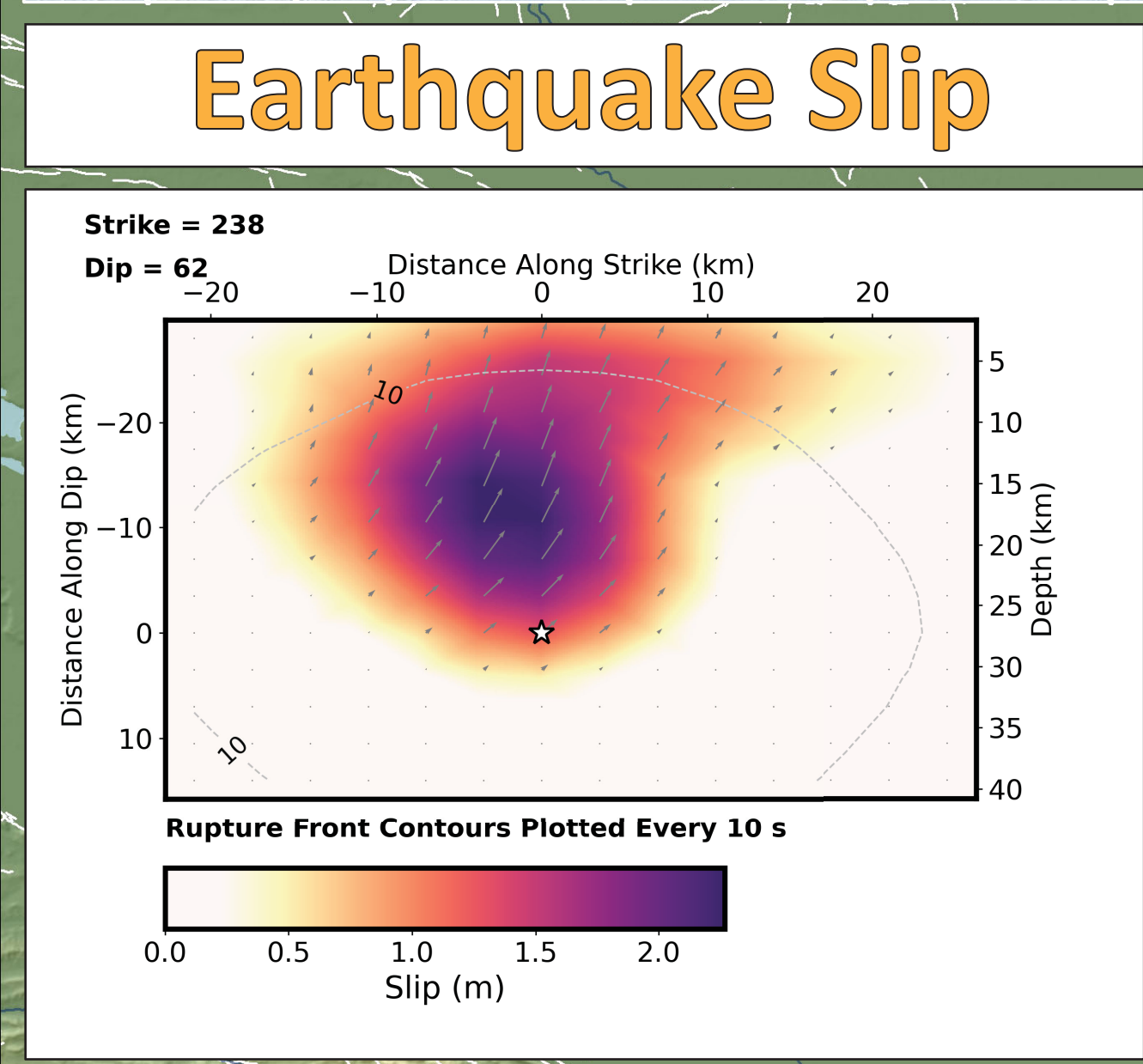
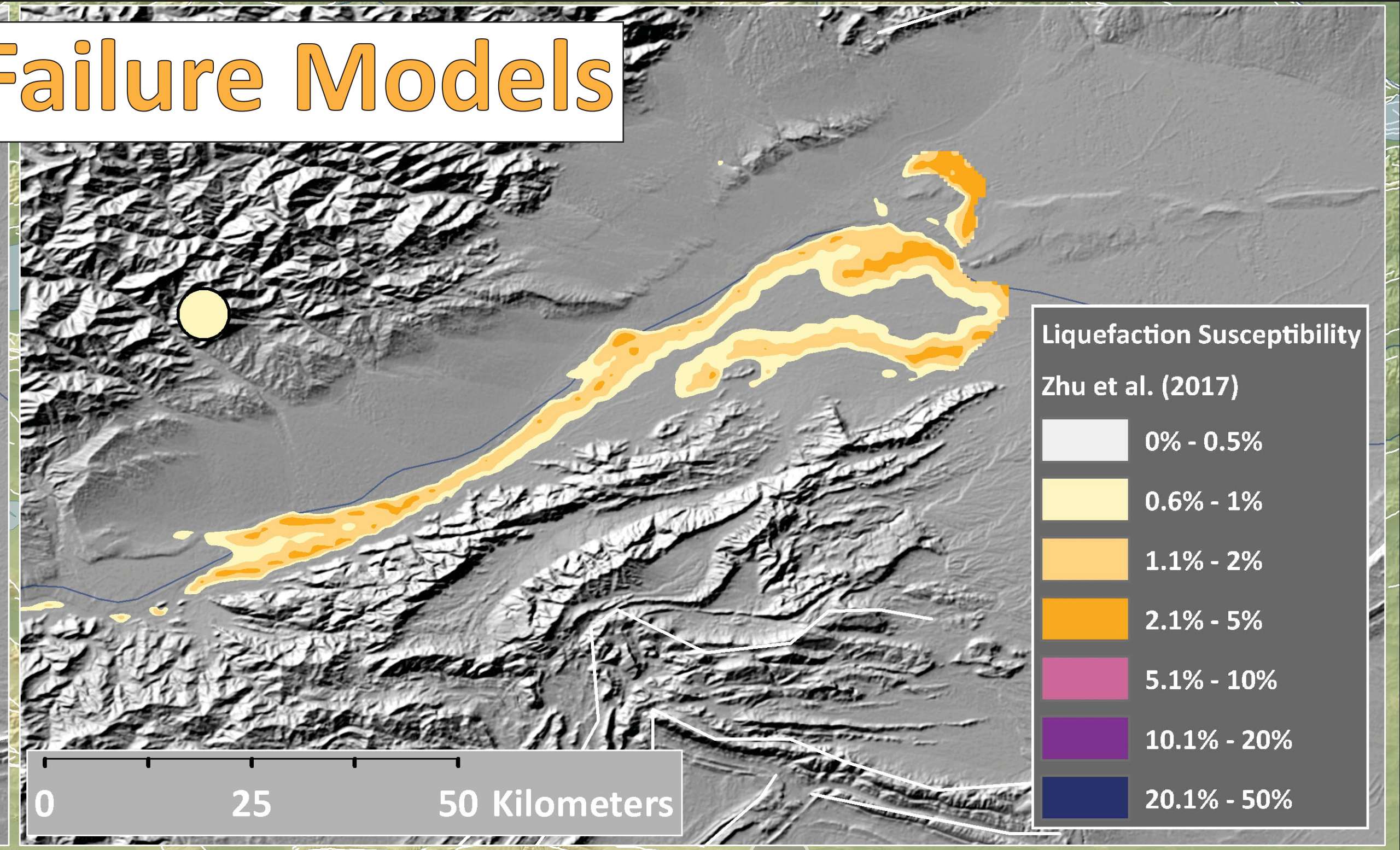
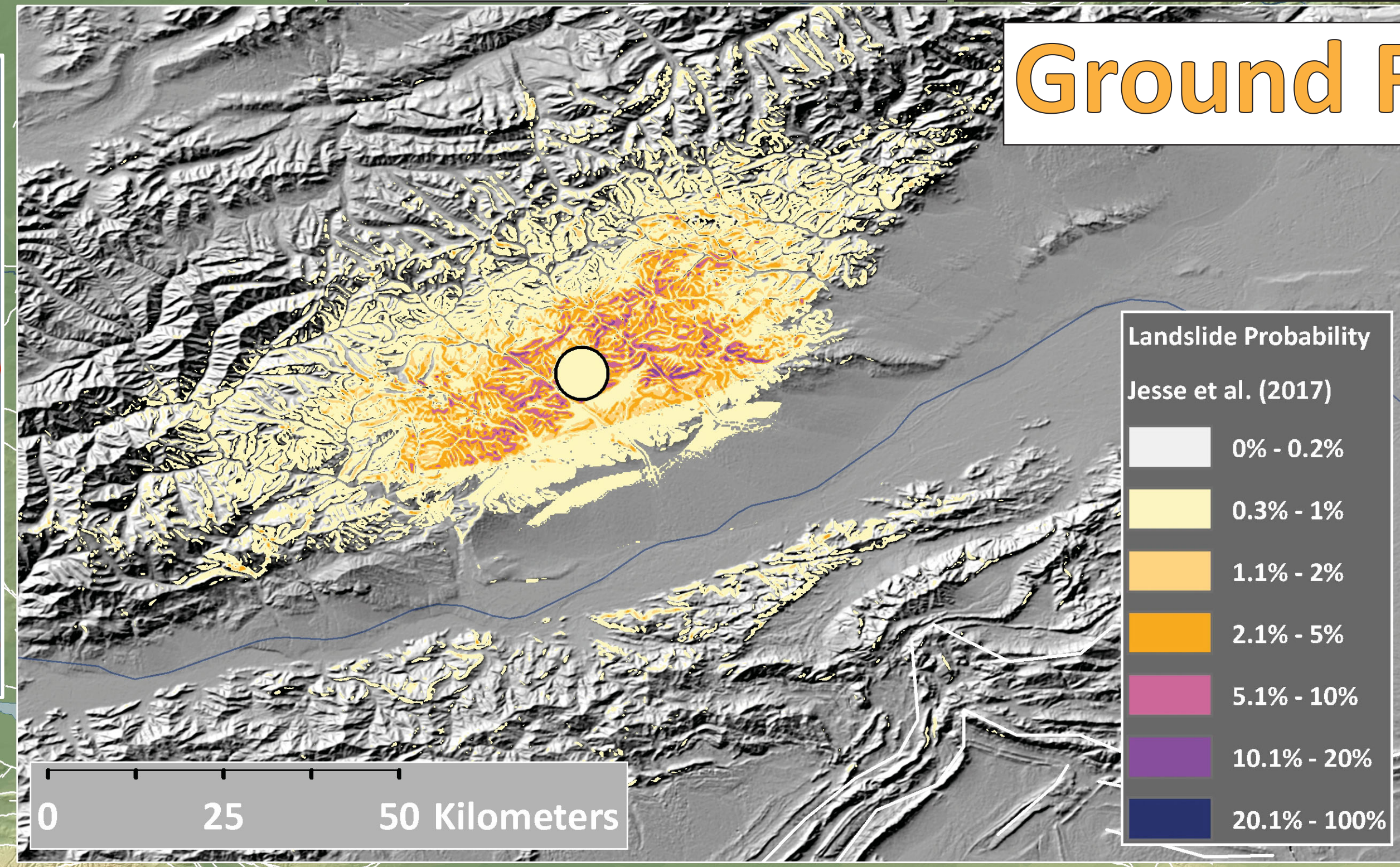
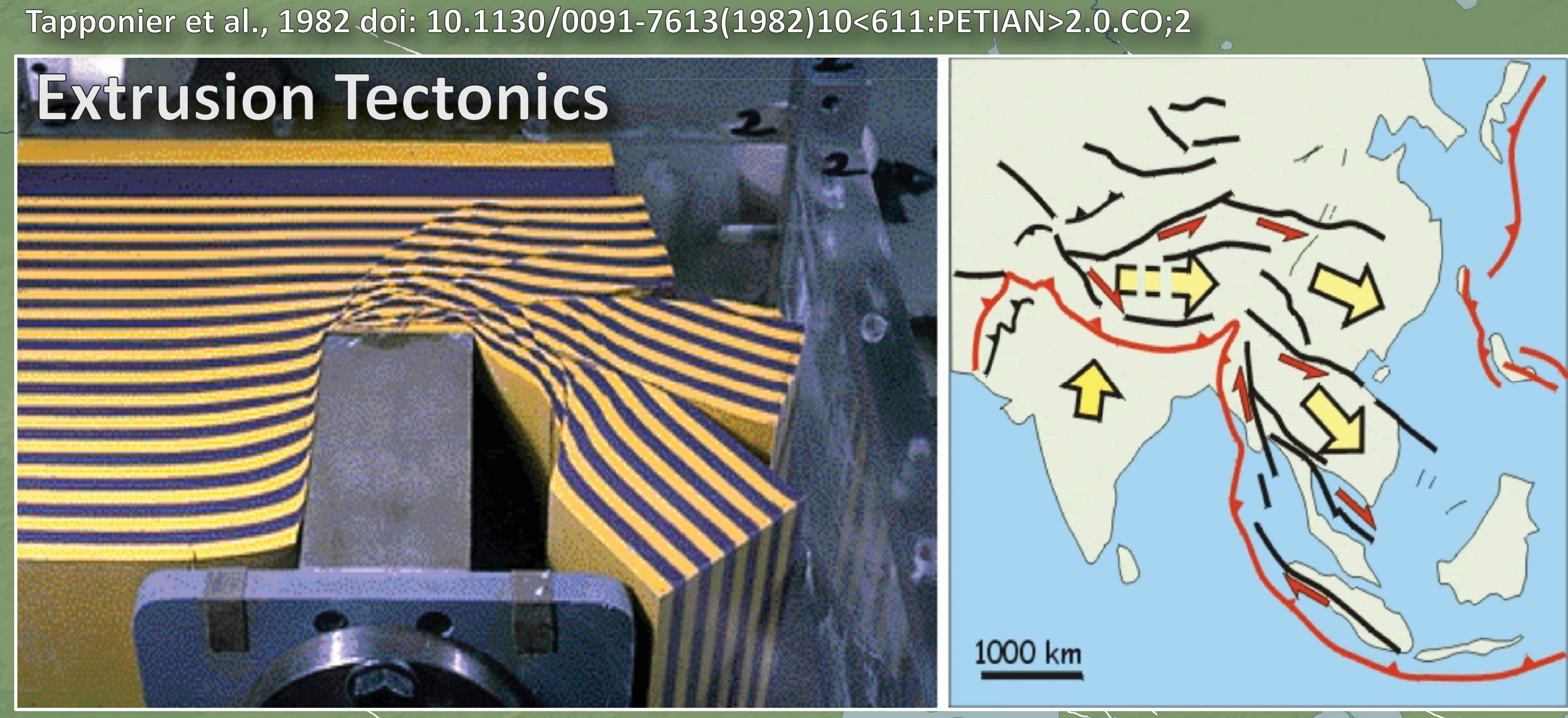
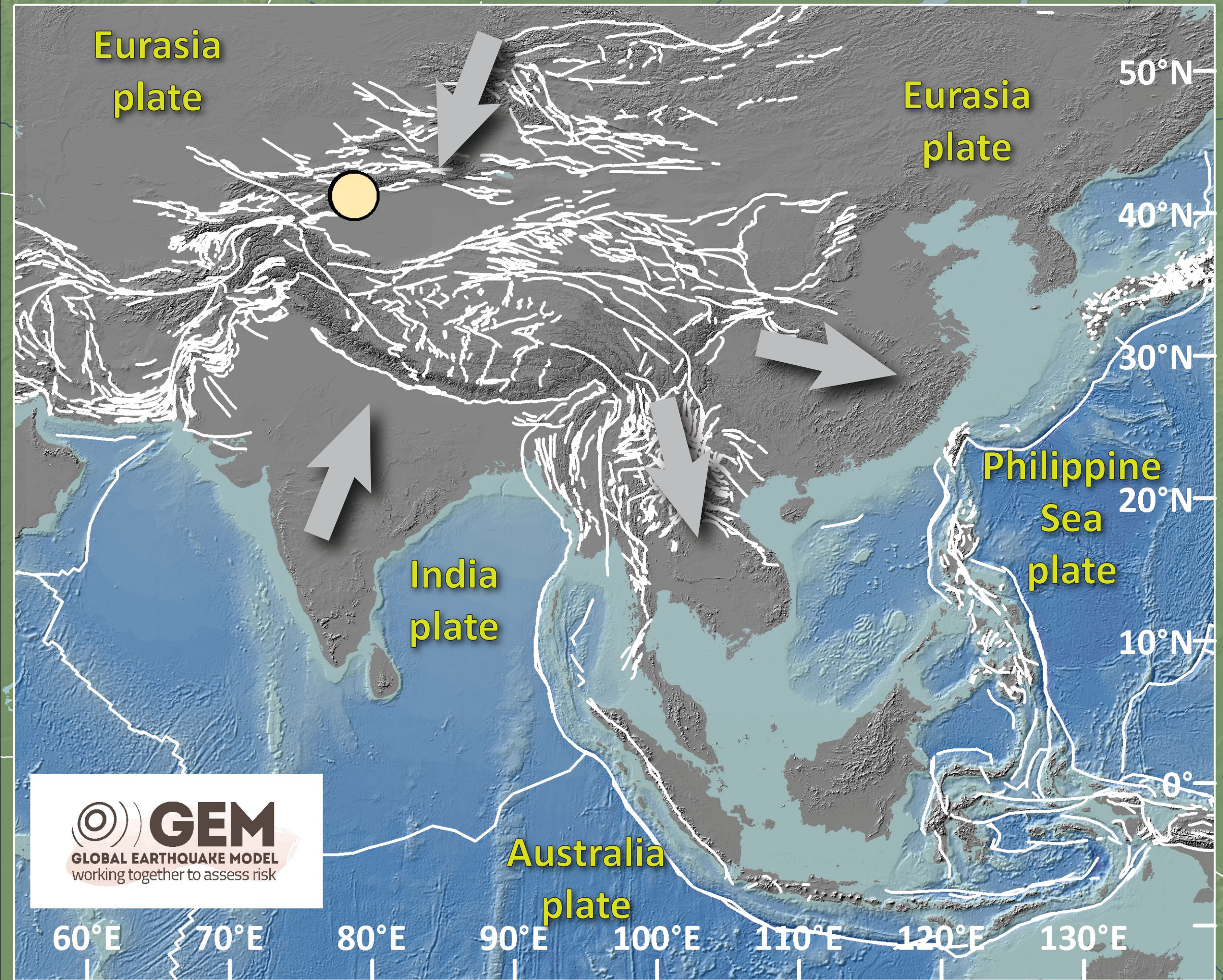


# Earthquake Report: 2023.01.22

## M 7.0 China (& USGS Seismicity 1923-2023 M ≥ 7.0)



SHAKING	Not Felt	Weak	Light	Moderate	Strong	Very Strong	Severe	Moderate/Heavy	Violent	Extreme
DAMAGE	Note	None	None	Very Light	Light	Moderate	Moderate/Heavy	Heavy	Very Heavy	
PGA (%g)	<0.05	0.3	2.76	6.2	11.5	21.5	40.1	74.7	>139	
PGV (cm/s)	<0.02	0.13	1.41	4.65	9.64	20	41.4	85.8	>178	
INTENSITY	1	2-3	4	5	6	7	8	9	10	



- 22 Jan '24 M 7.0 (EMSC) Seismicity (USGS - 1 century)
- 22 Jan '24 M 7.0 (USGS) magnitude
- Seismicity (USGS - 1 month) magnitude
- 0.0 - 1.0
- 1.1 - 2.0
- 2.1 - 3.0
- 3.1 - 4.0
- 4.1 - 5.0
- 5.1 - 6.0
- 6.1 - 7.5
- 7.0 - 7.5
- 7.6 - 8.0
- 8.1 - 8.5
- 8.6 - 9.1
- Lake (Natural Earth)
- River (Natural Earth)
- Populated Place
- Fault (AFEAD)
- Elevation: High to Low
- Topography: Ryan et al., 2009 doi:10.1029/2008GC002332
- USGS science for a changing world
- Jason R. Patton earthjay.com © 2024