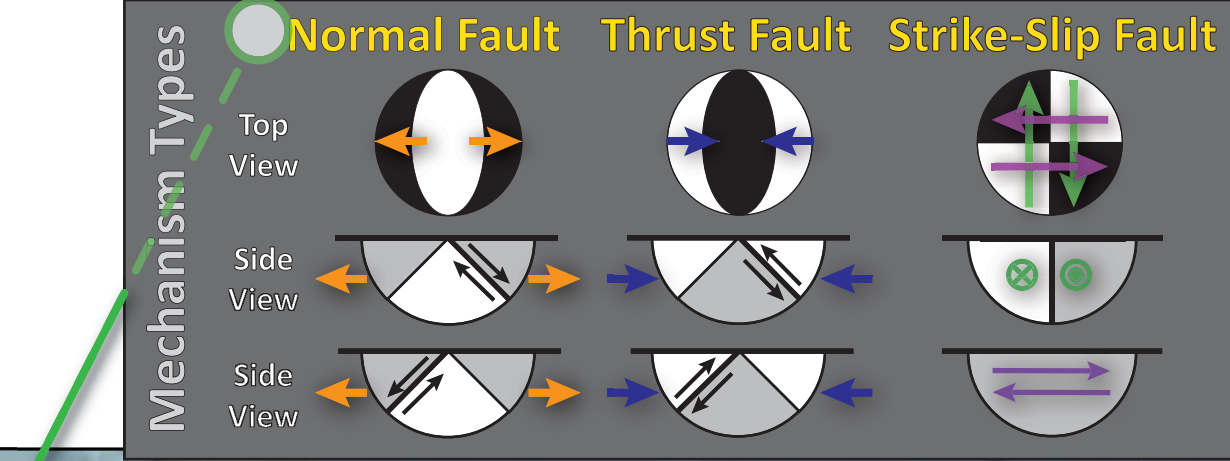
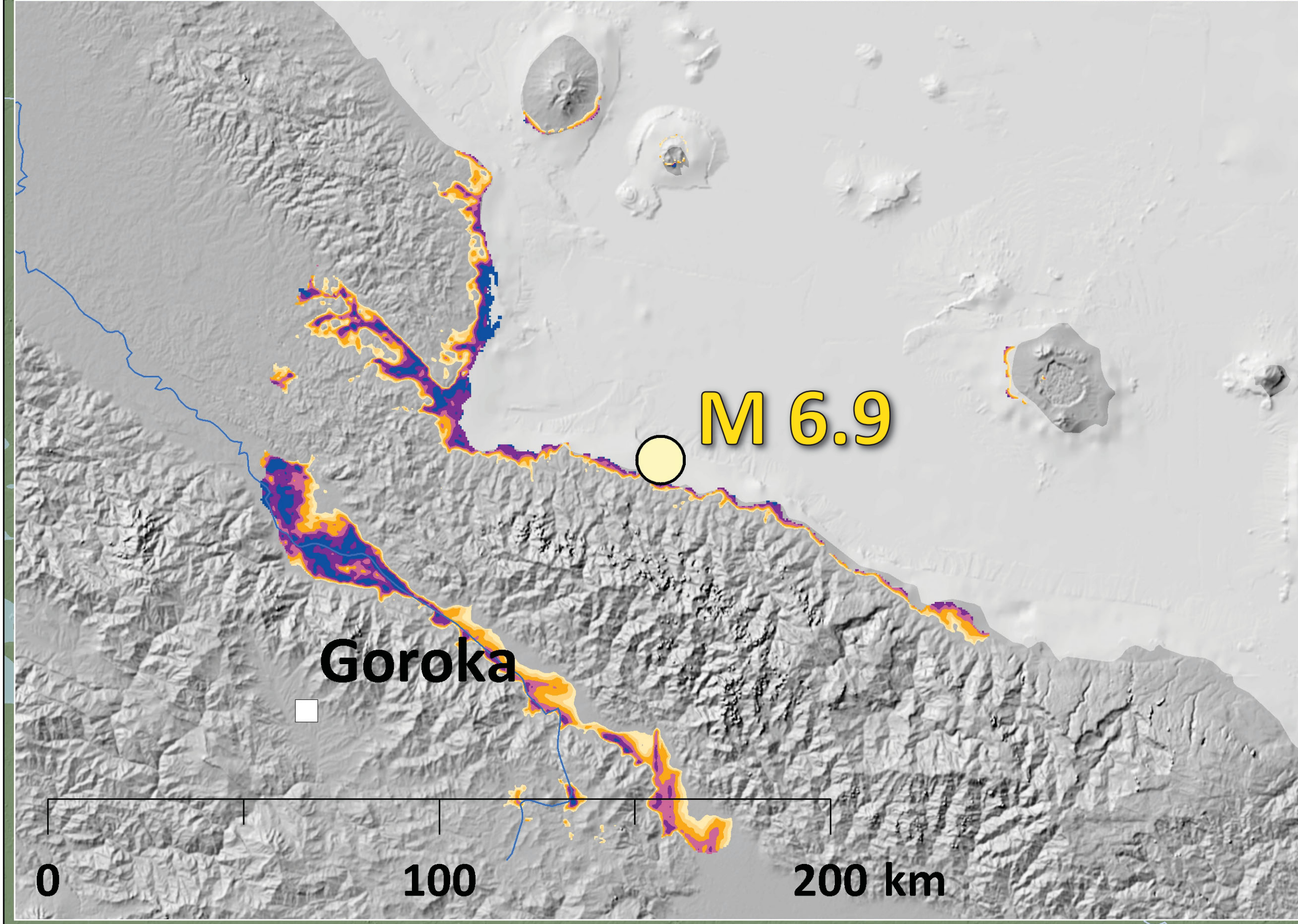
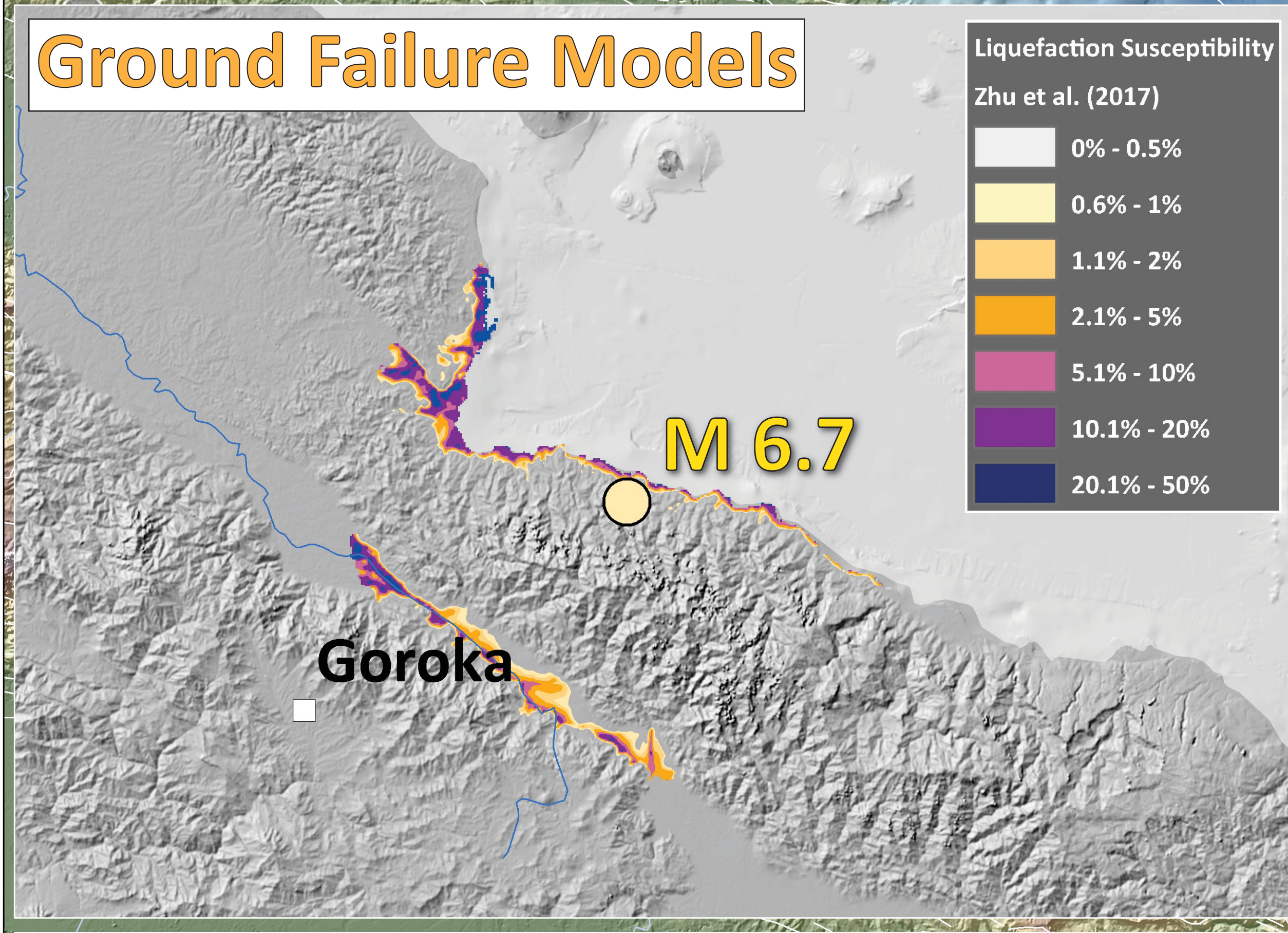


# Earthquake Report: 2023.10.07

## M 6.7 & 6.9 Papua New Guinea (& USGS Seismicity 1923-2023 M ≥ 6.5)



SHAKING	Not Felt	Weak	Moderate	Strong	Very Strong	Severe	Violent	Extreme	
DAMAGE	Note	None	None	Very Light	Light	Moderate	Moderate/Heavy	Heavy	Very Heavy
PGA (%g)	<0.05	0.3	2.76	6.2	11.5	21.5	40.1	74.7	>139
PGV (cm/s)	<0.02	0.13	1.41	4.65	9.64	20	41.4	85.8	>178
INTENSITY	1	2-3	4	5	6	7	8	9	10



City (Natural Earth) Seismicity (USGS - 1 century) magnitude

20231007\_PNG\_m6p7 magnitude

20231007\_PNG\_m6p9 magnitude

Seismicity (USGS - 1 week) magnitude

- 0.1 - 1.0
- 1.1 - 2.0
- 2.1 - 3.0
- 3.1 - 4.0
- 4.1 - 5.0
- 5.1 - 6.0
- 6.1 - 7.1

Elevation High Low Depth Shallow Deep

**GEM** GLOBAL EARTHQUAKE MODEL working together to assess risk

Made with **Natural Earth**

**CCOP** COMMISSION FOR COOPERATION IN SEISMICITY PROGRAMS IN THE PACIFIC OCEANIC REGION

Jason R. Patton earthjay.com © 2023

**USGS**

Topography: Ryan et al., 2009 doi: 10.1029/2008GC002332.

