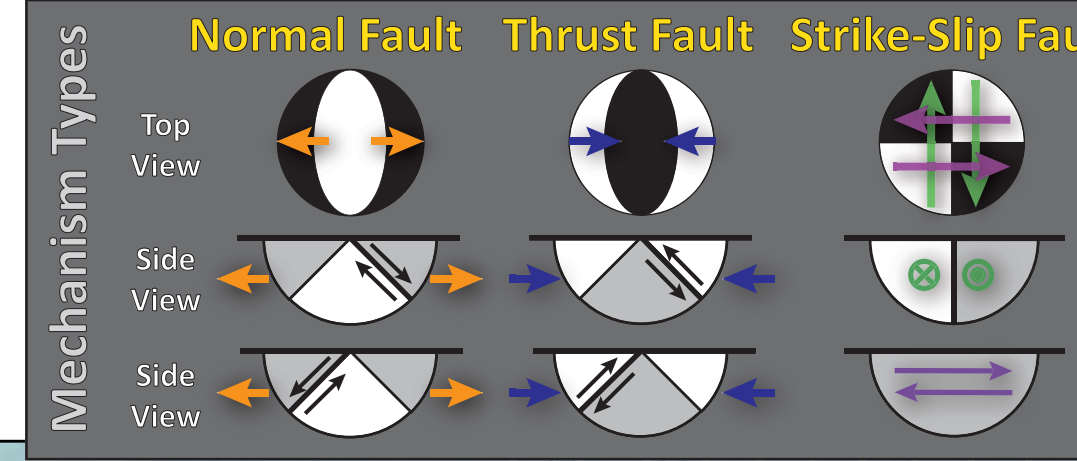
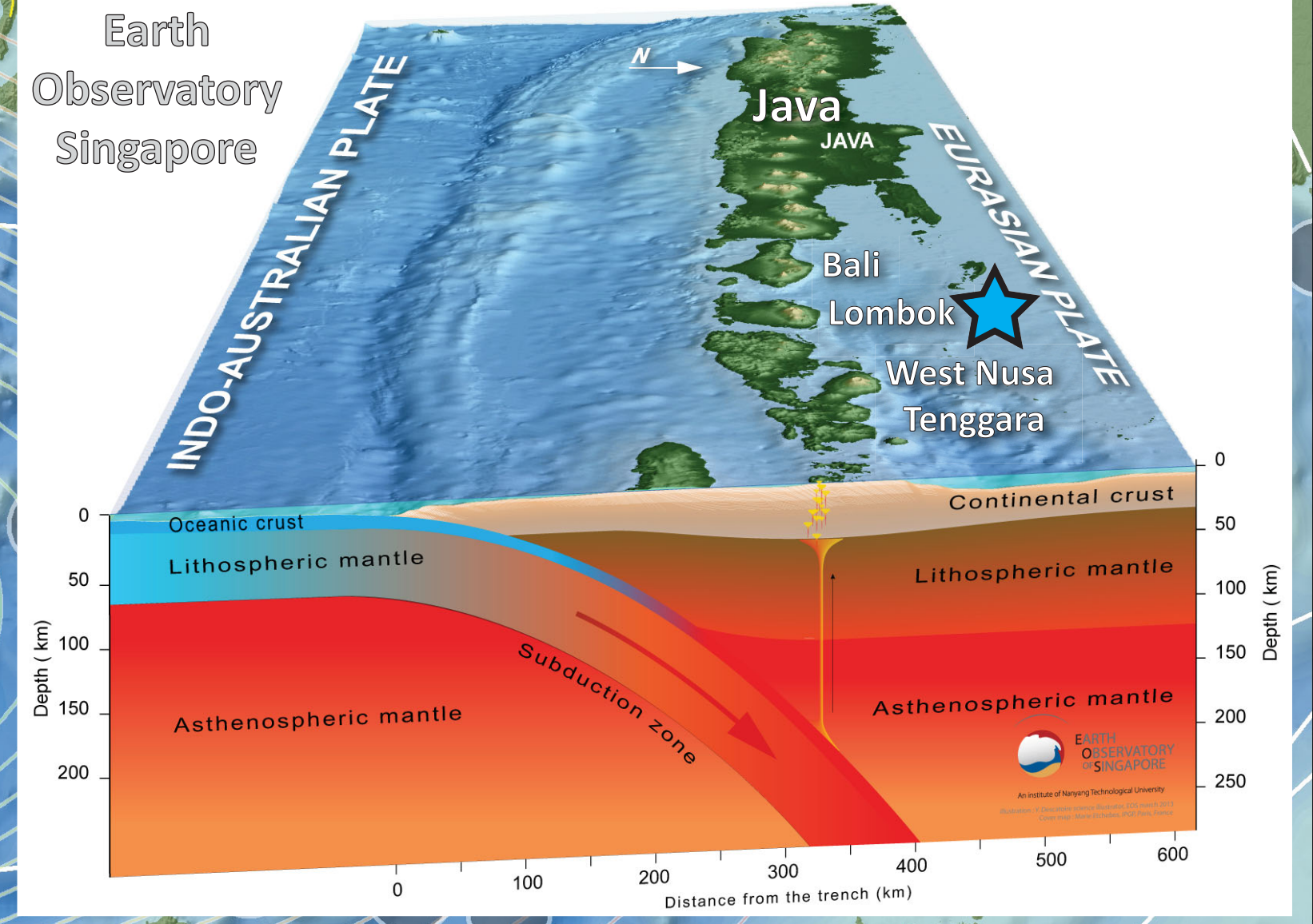
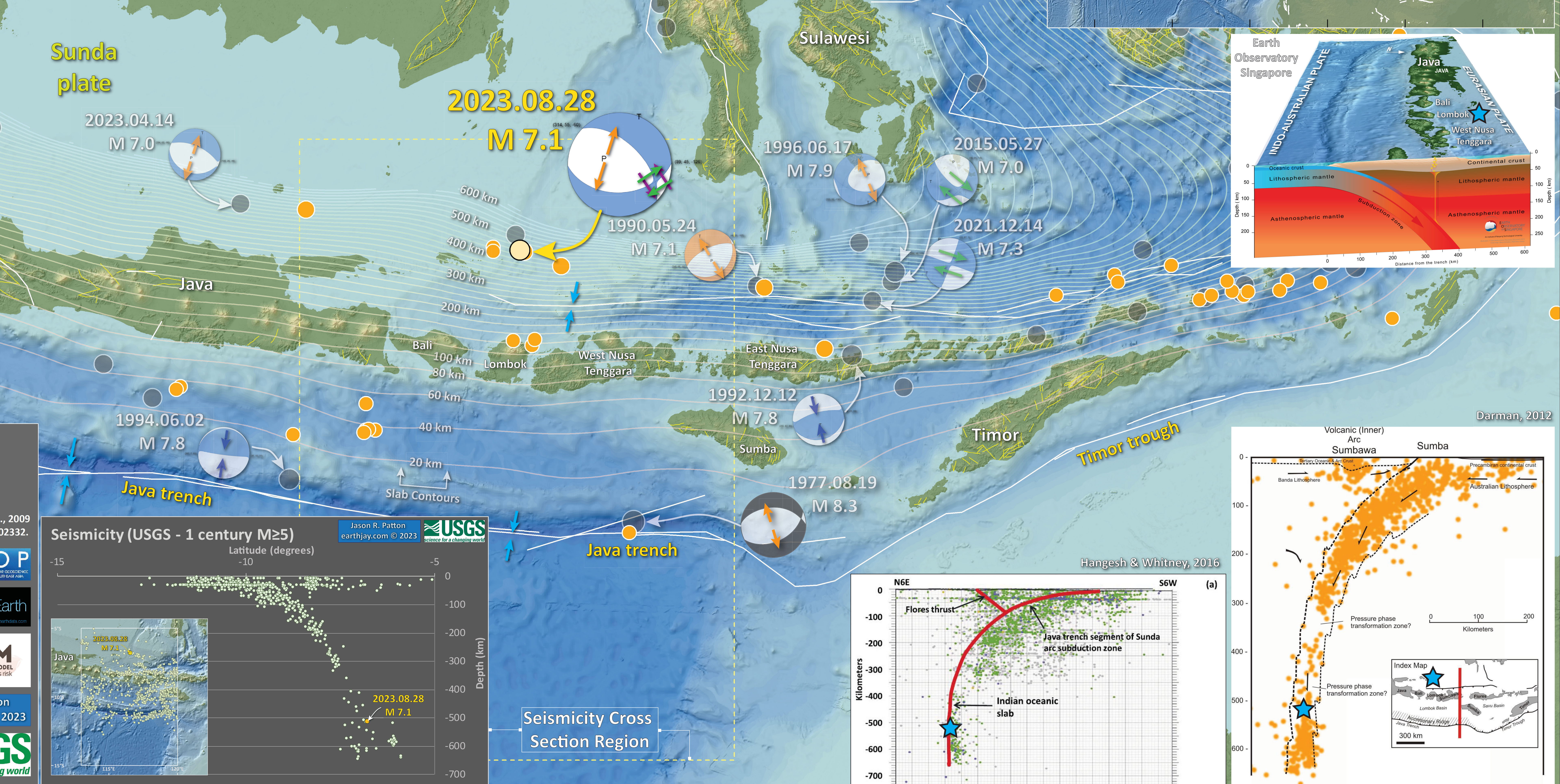
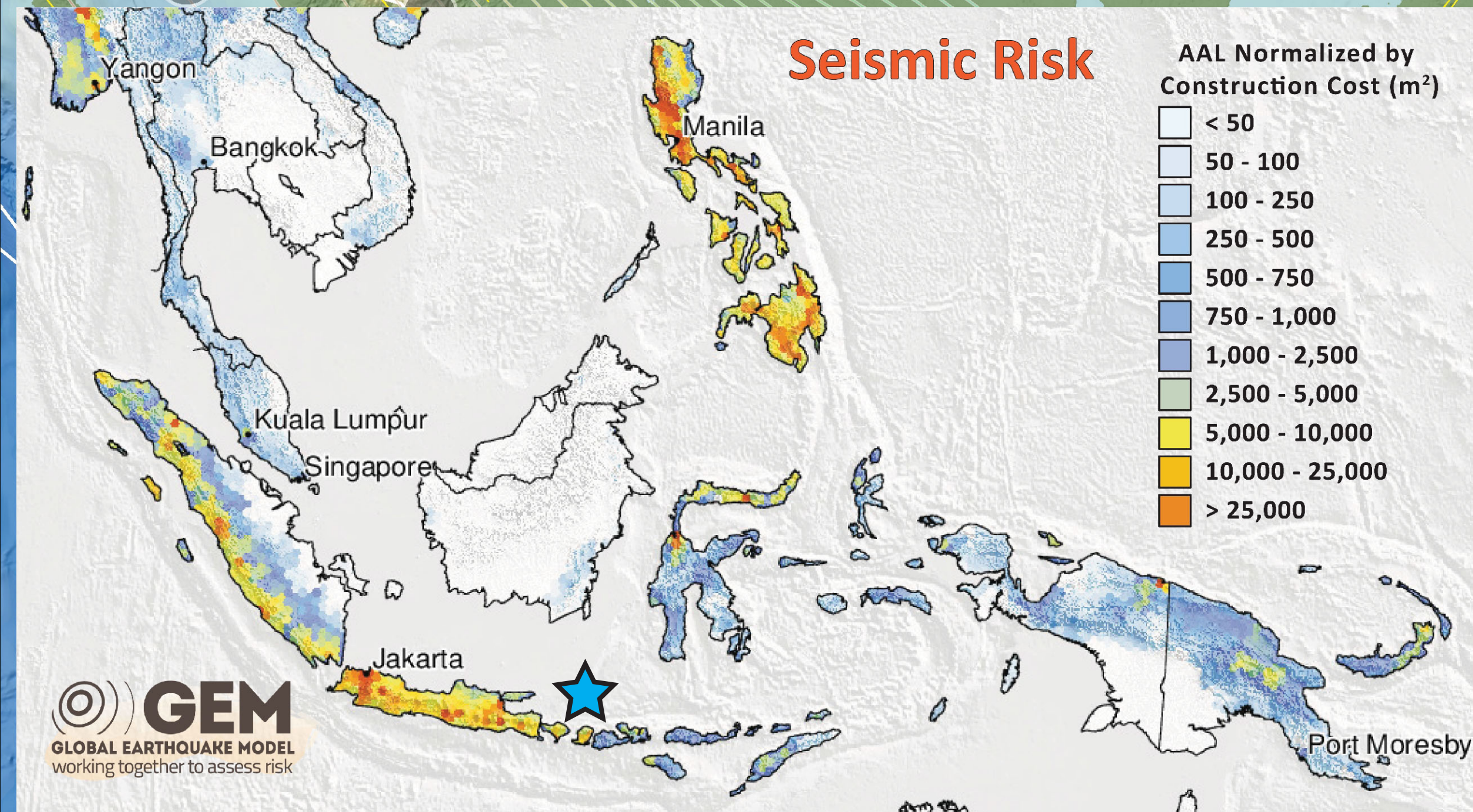
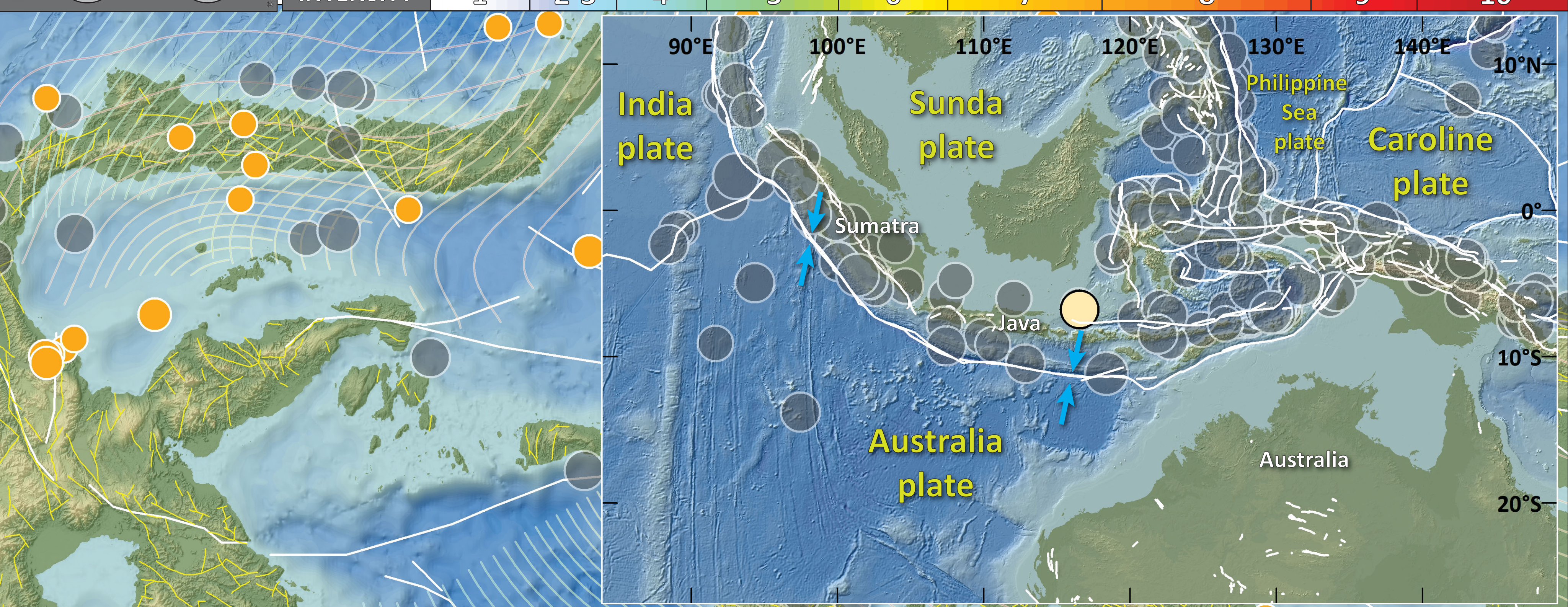
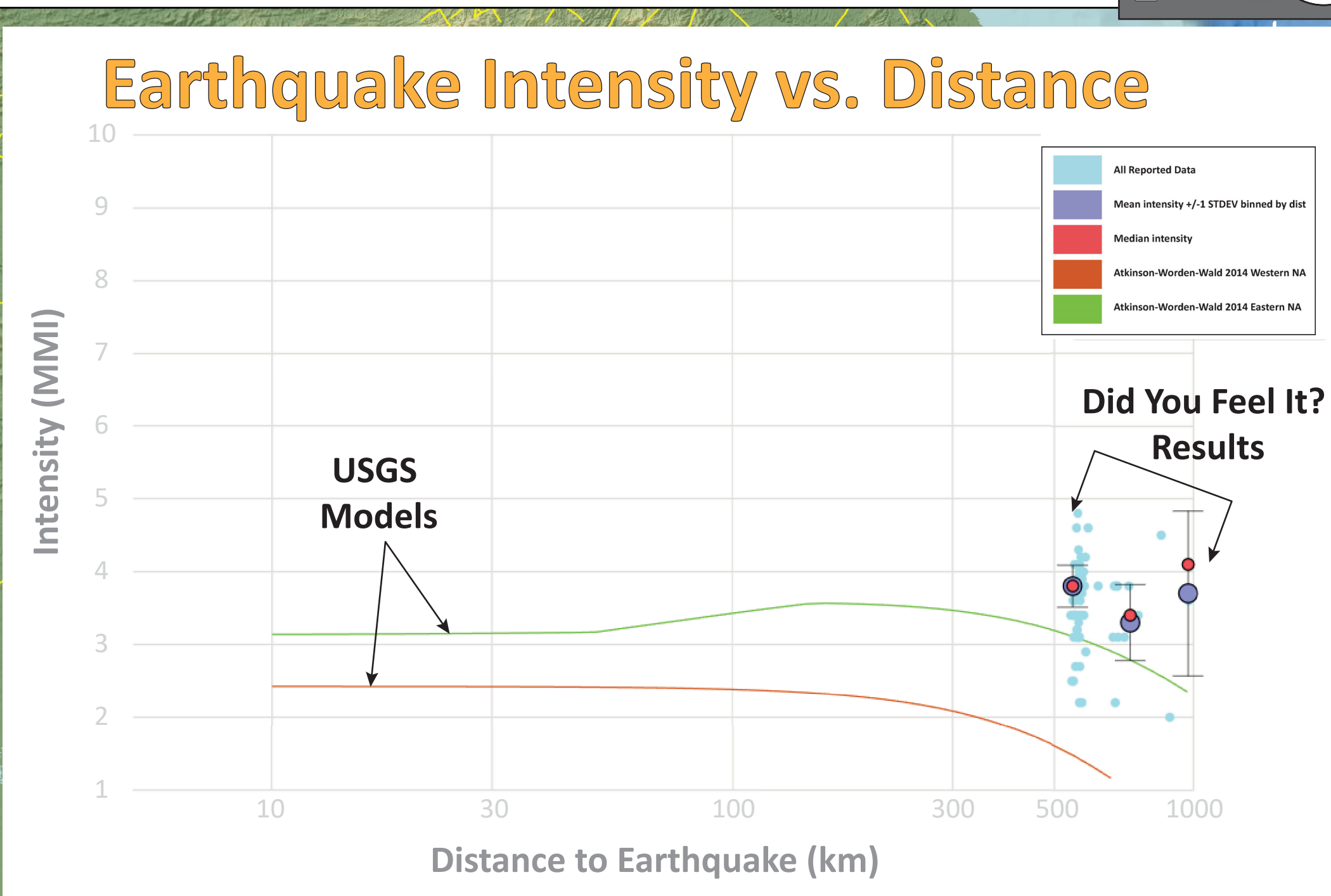
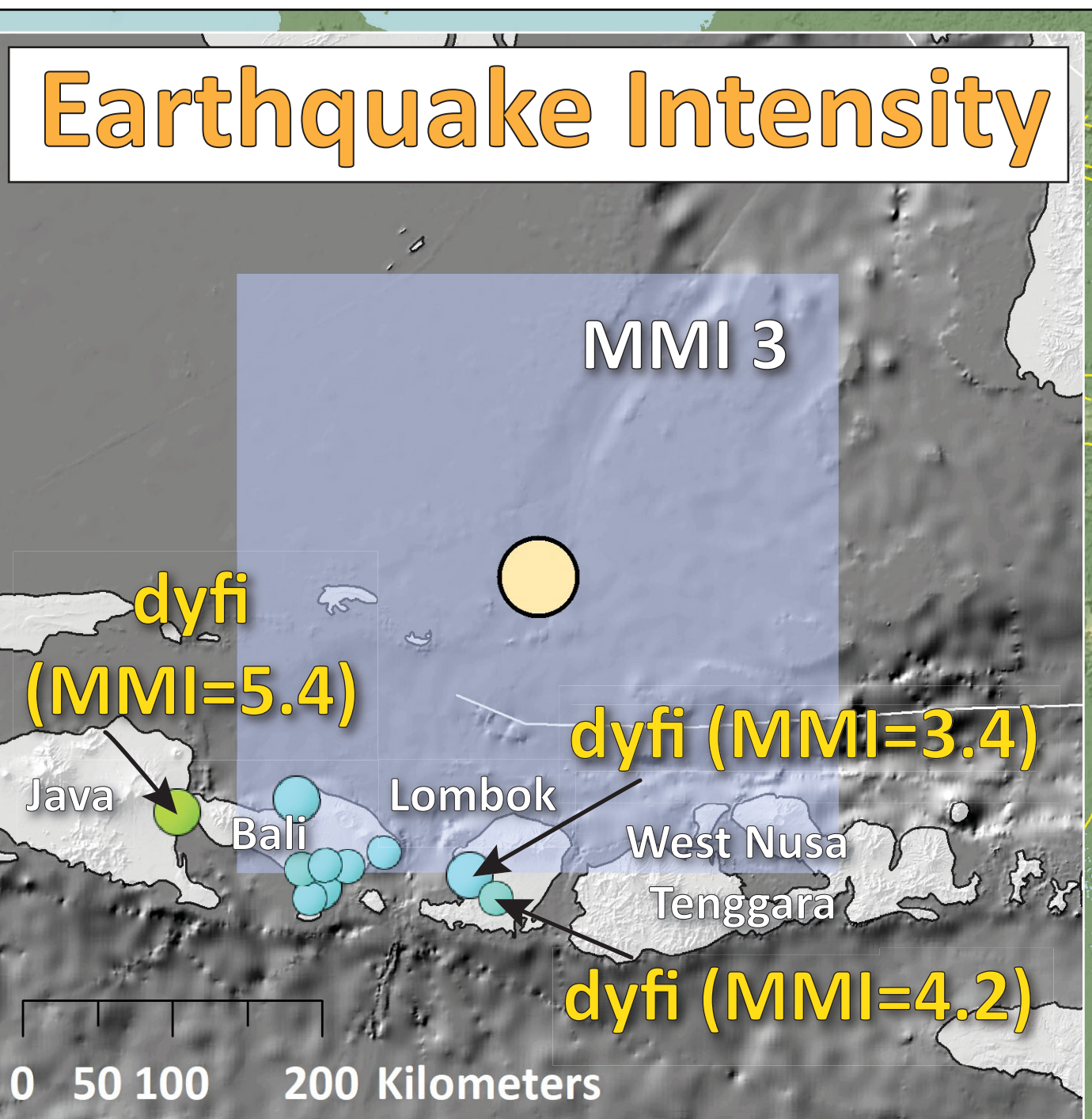
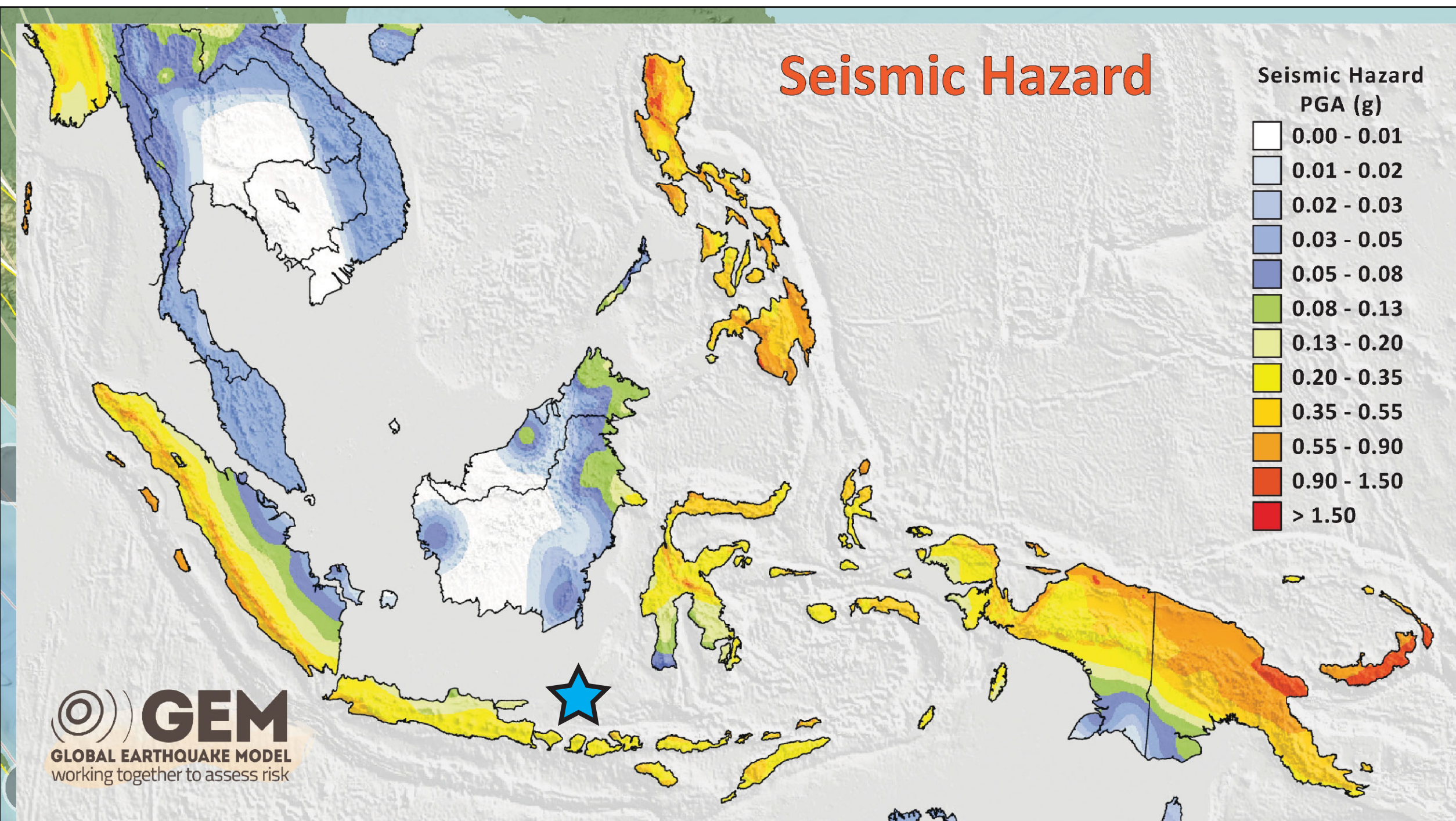


Earthquake Report: 2023.08.28

M 7.1 Bali/Lombok Indonesia (& USGS Seismicity 1923-2023 M ≥ 7.0)



SHAKING	Not Felt	Weak	Moderate	Strong	Very Strong	Severe	Violent	Extreme	
DAMAGE	Note	None	None	Very Light	Light	Moderate	Moderate/Heavy	Heavy	Very Heavy
PGA (%g)	<0.05	0.3	2.76	6.2	11.5	21.5	40.1	74.7	>139
PGV (cm/s)	<0.02	0.13	1.41	4.65	9.64	20	41.4	85.8	>178
INTENSITY	1	2-3	4	5	6	7	8	9	10



Intensity

MMI (USGS)

- I (Not Felt)
- II - III (Weak)
- IV (Light)
- V (Moderate)
- VI (Strong)
- VII (Very Strong)
- VIII (Severe)
- IX (Violent)
- X+ (Extreme)

Seismicity (USGS - 1 century)

Seismicity (USGS - 1 month)

magnitude

- 0.0 - 1.0
- 1.1 - 2.0
- 2.1 - 3.0
- 3.1 - 4.0
- 4.1 - 5.0
- 5.1 - 6.0
- 6.1 - 7.1

Seismicity (USGS - 1 century) magnitude

- 7.0 - 7.5
- 7.6 - 8.0
- 8.1 - 8.5
- 8.6 - 9.1

Fault

- CCOP SEA2M
- GEM

Topography: Ryan et al., 2009 doi: 10.1029/2008GC002332.

CCOP

Made with Natural Earth

GEM

GLOBAL EARTHQUAKE MODEL

working together to assess risk

Jason R. Patton

earthjay.com © 2023

USGS

science for a changing world

Depth to Slab (km)

0 50 100 150 200 250 300 350 400 450 500 550 600 650 700

0 75 150 300 Miles

0 112.5 225 450 Kilometers

