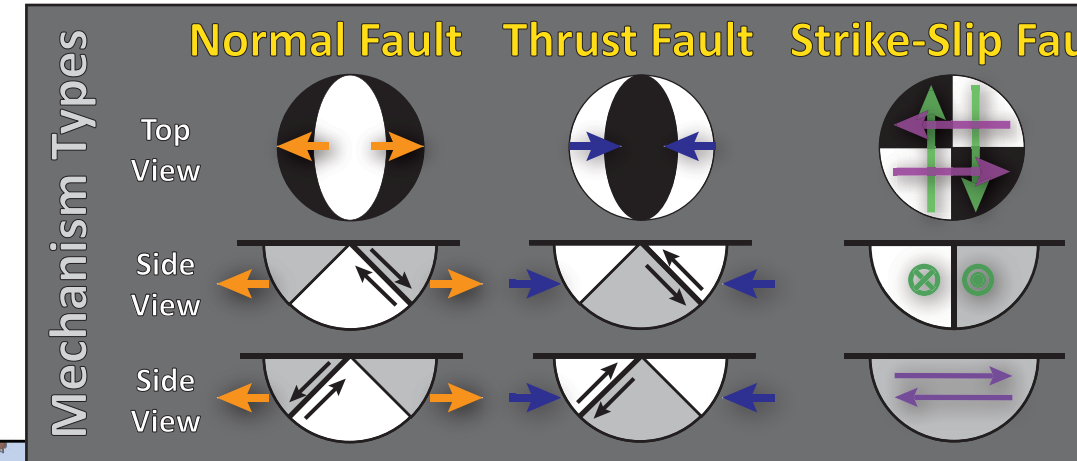
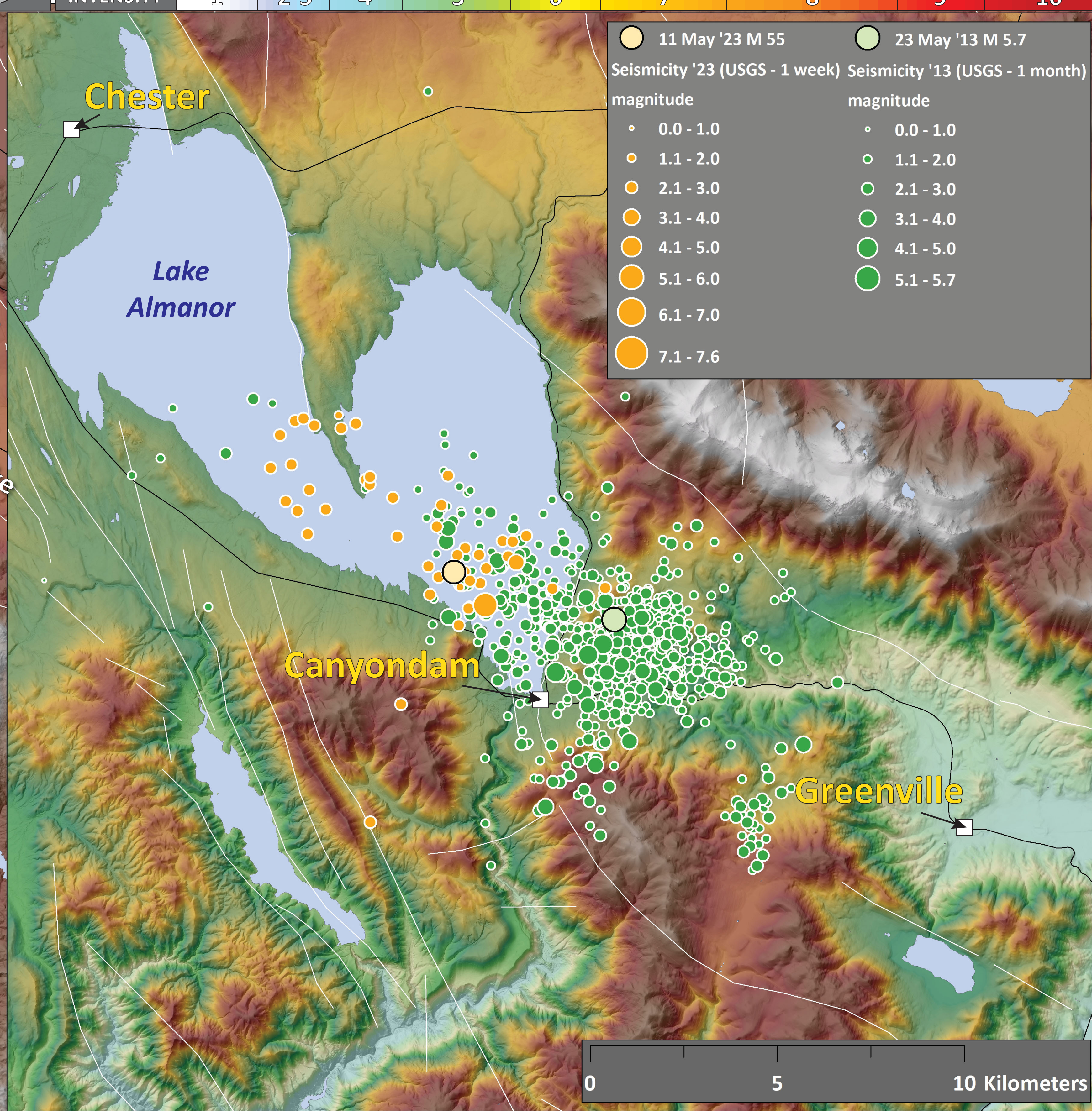
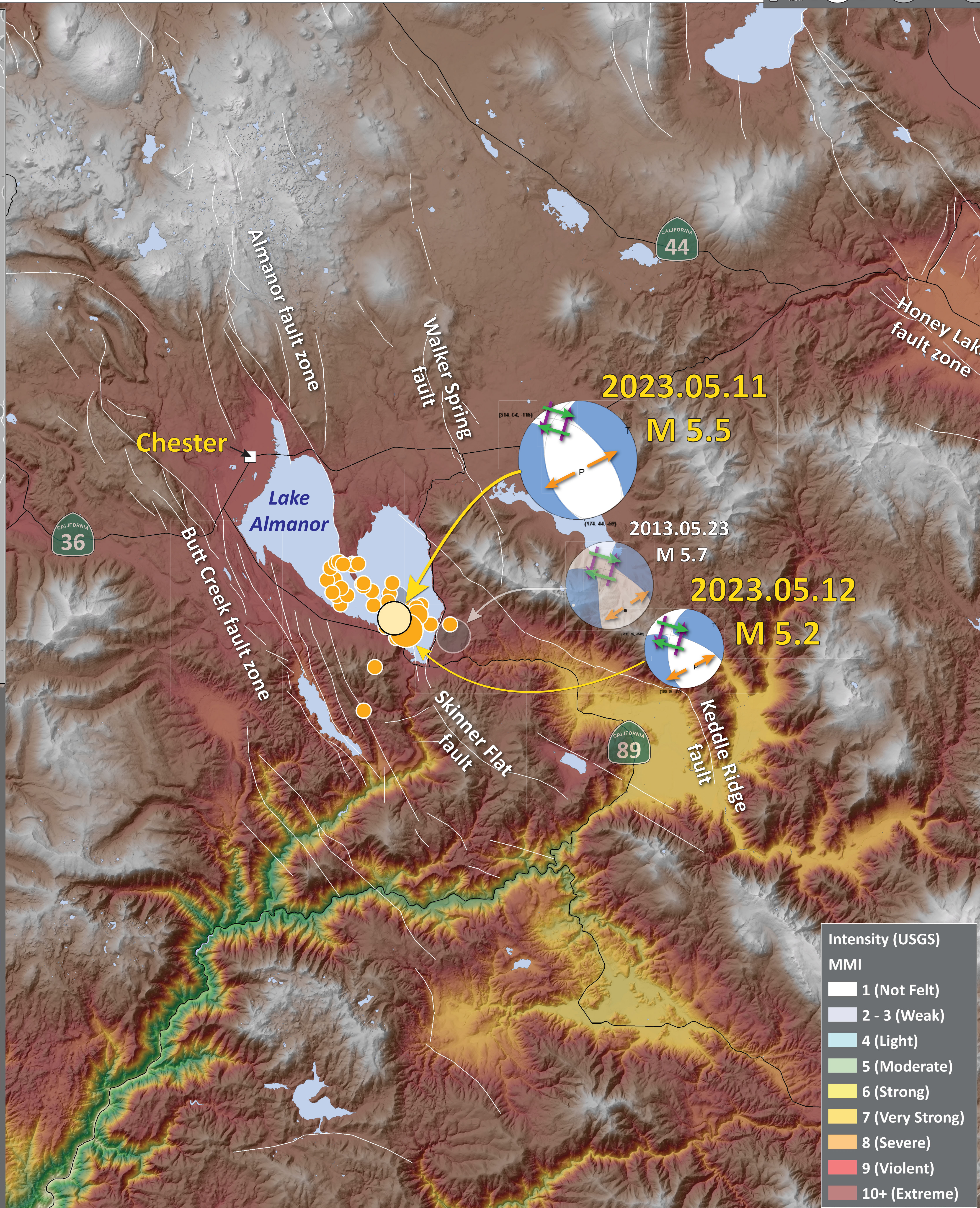
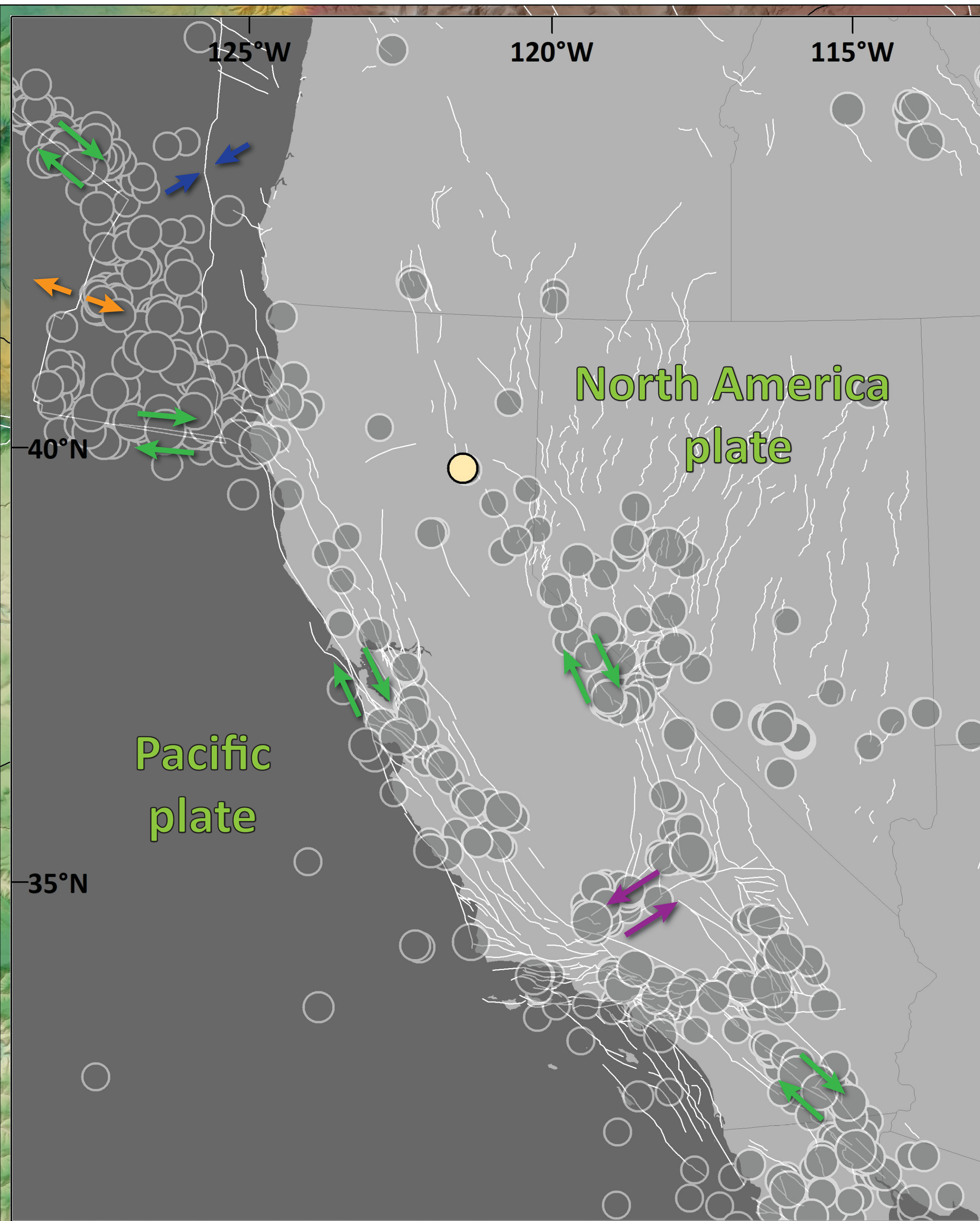


Earthquake Report: 2023.05.11

M 5.5 Lake Almanor (& USGS Seismicity 1923-2023 M ≥ 5.0)



SHAKING	Not Felt	Weak	Light	Moderate	Strong	Very Strong	Severe	Violent	Extreme
DAMAGE	Note	None	None	Very Light	Light	Moderate	Moderate/Heavy	Heavy	Very Heavy
PGA (%g)	<0.05	0.3	2.76	6.2	11.5	21.5	40.1	74.7	>139
PGV (cm/s)	<0.02	0.13	1.41	4.65	9.64	20	41.4	85.8	>178
INTENSITY	1	2-3	4	5	6	7	8	9	10



● 11 May '23 M 5.5 ● 23 May '13 M 5.7

Seismicity '23 (USGS - 1 week) Seismicity '13 (USGS - 1 month)

magnitude magnitude

- 0.0 - 1.0
- 1.1 - 2.0
- 2.1 - 3.0
- 3.1 - 4.0
- 4.1 - 5.0
- 5.1 - 6.0
- 6.1 - 7.0
- 7.1 - 7.6

● 11 May '23 M 5.5 Seismicity (USGS - 1 century)

Seismicity (USGS - 1 week) magnitude

- 0.0 - 1.0
- 1.1 - 2.0
- 2.1 - 3.0
- 3.1 - 4.0
- 4.1 - 5.0
- 5.1 - 6.0
- 6.1 - 7.0
- 7.1 - 7.6

● 5.0 - 5.5

● 5.6 - 6.0

● 6.1 - 6.5

● 6.6 - 7.0

● 7.1 - 7.5

● 7.6 - 8.0

Elevation: USGS 3DEP

Jason R. Patton
earthjay.com © 2023

Highway

Fault (USGS)

Lake (CDFW)

0 5 10 Miles

0 5 10 20 km

