

# Landslide Probability (USGS)

Jesse et al., 2017

# Ground Failure Models

<0.5%

0.5-1%

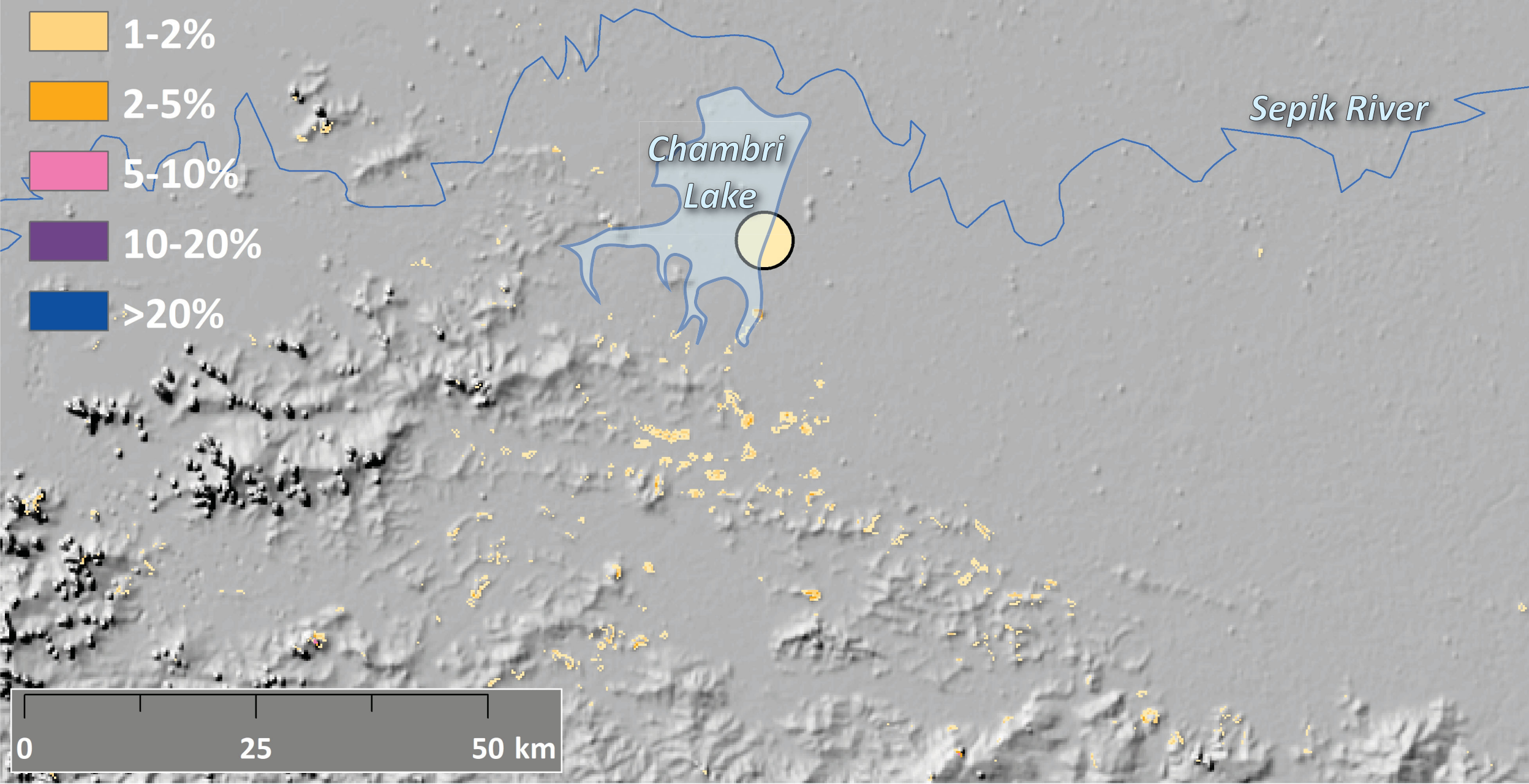
1-2%

2-5%

5-10%

10-20%

>20%



# Liquefaction Susceptibility (USGS)

Zhu et al., 2017

<0.5%

0.5-1%

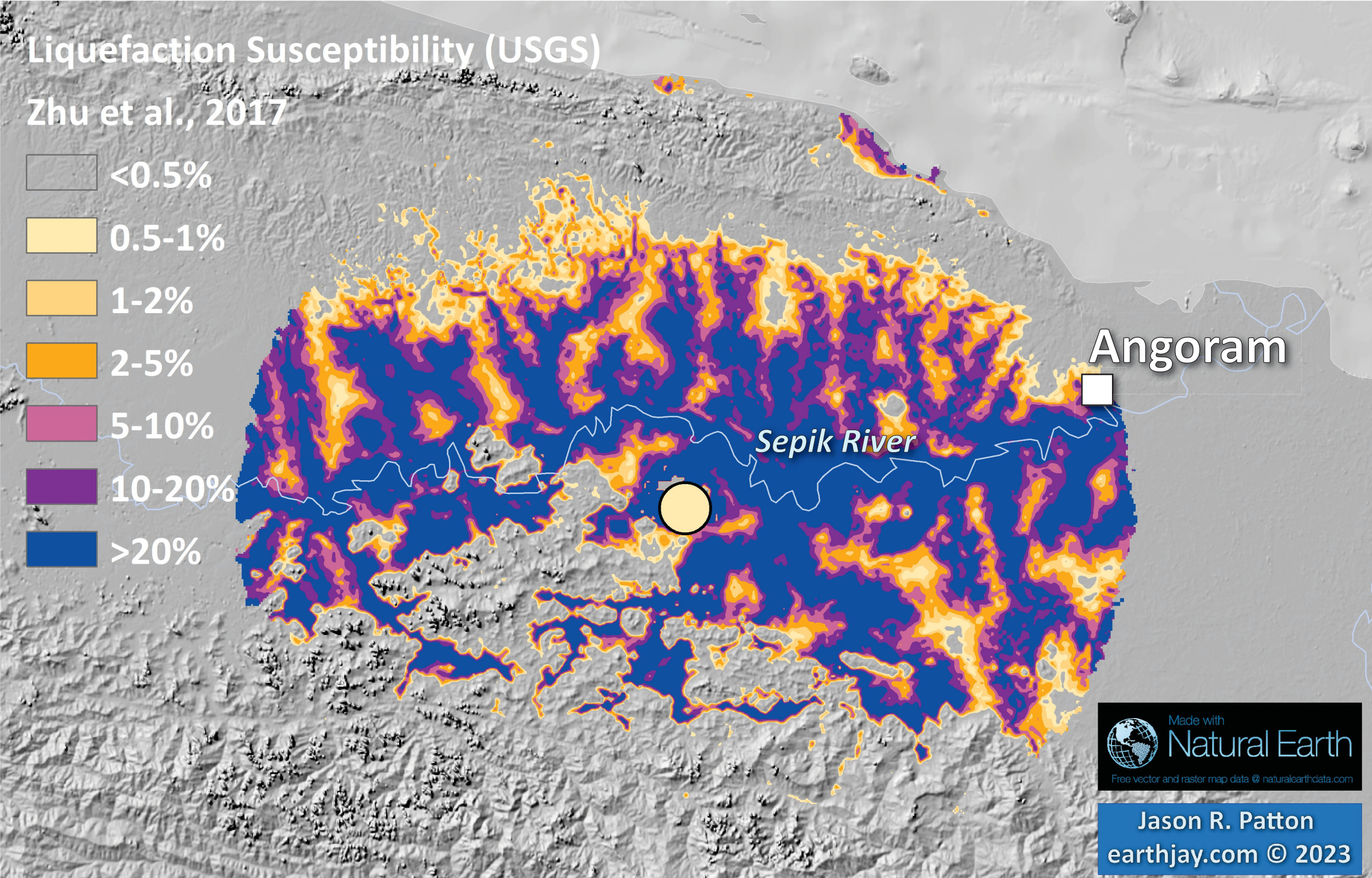
1-2%

2-5%

5-10%

10-20%

>20%



Made with  
**Natural Earth**  
Free vector and raster map data @ [naturalearthdata.com](http://naturalearthdata.com)

Jason R. Patton  
earthjay.com © 2023

