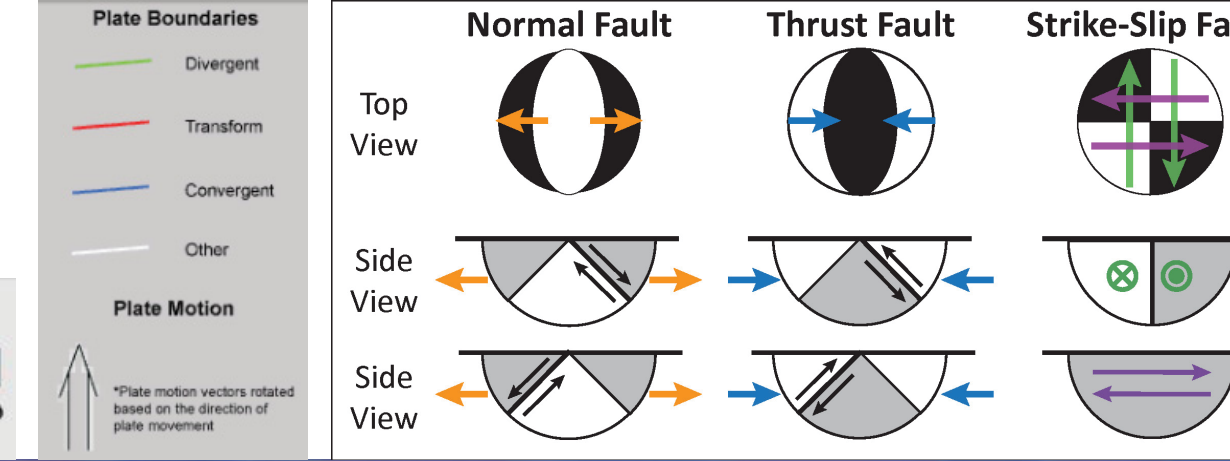
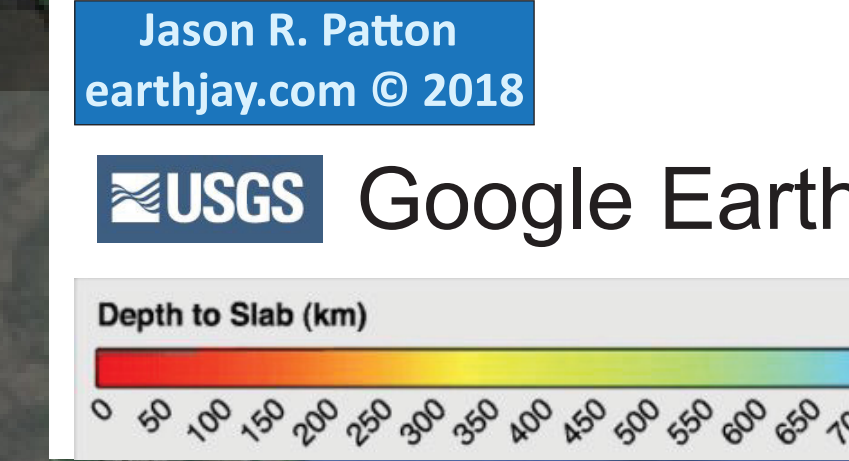
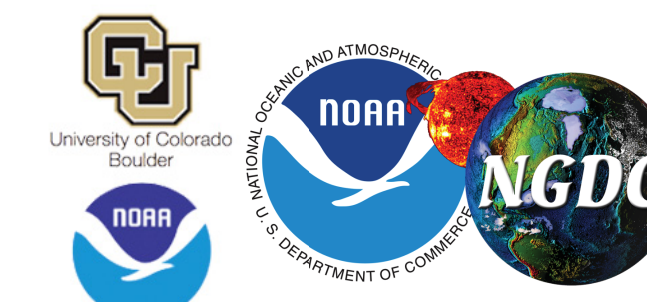
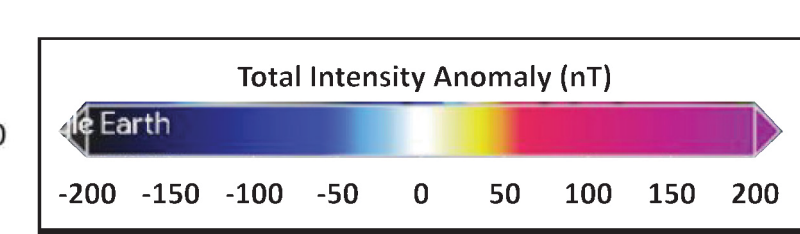
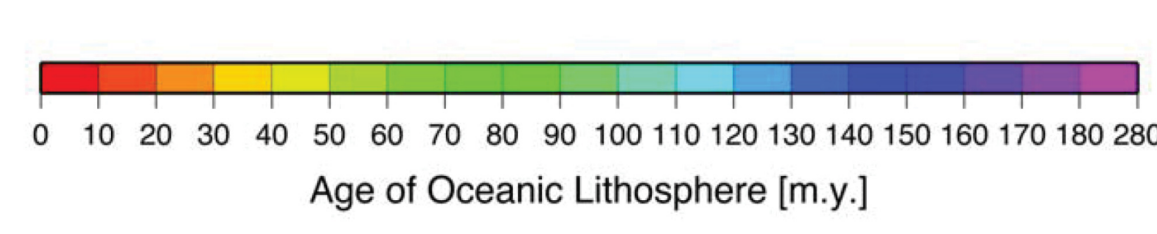


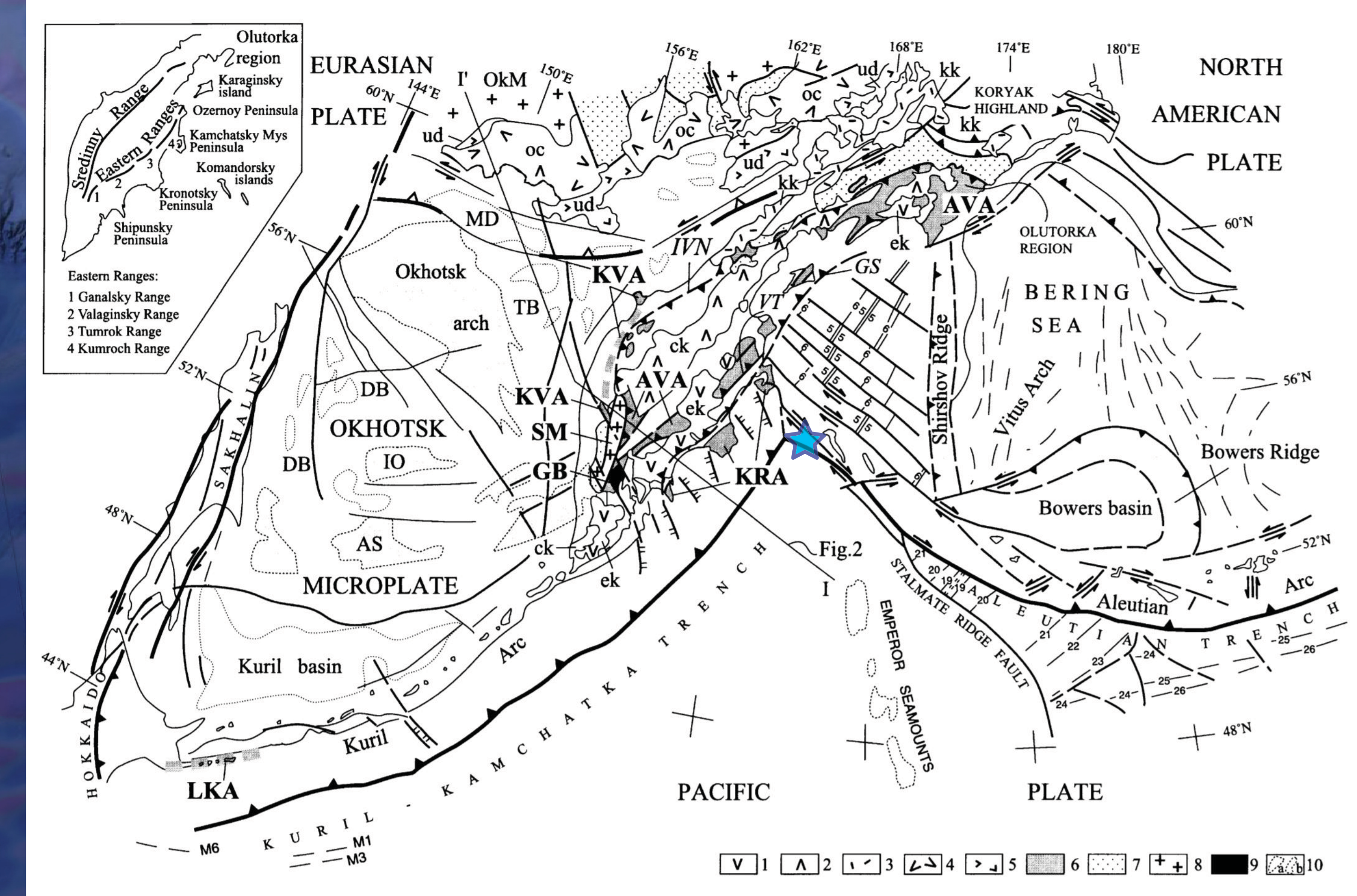
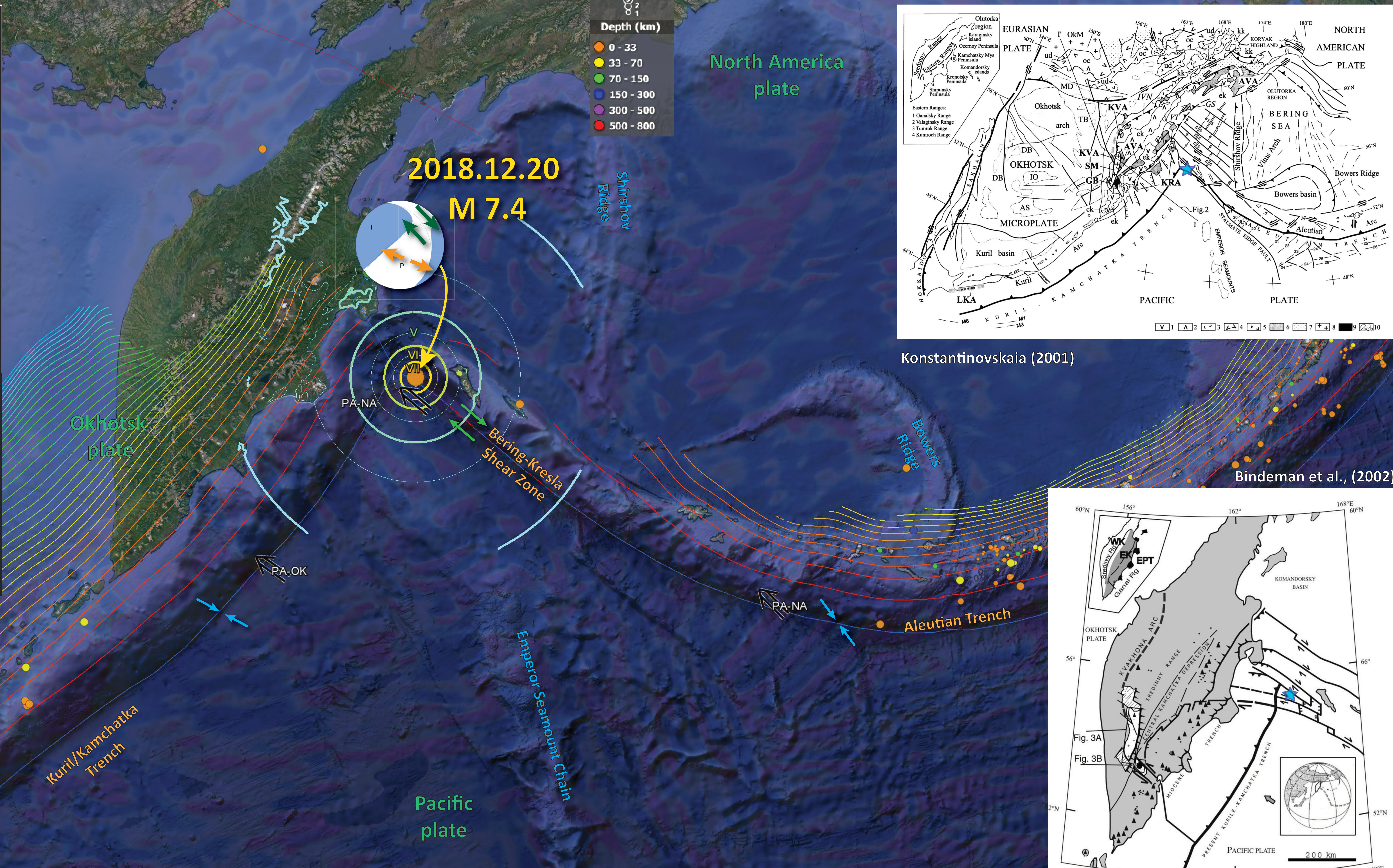
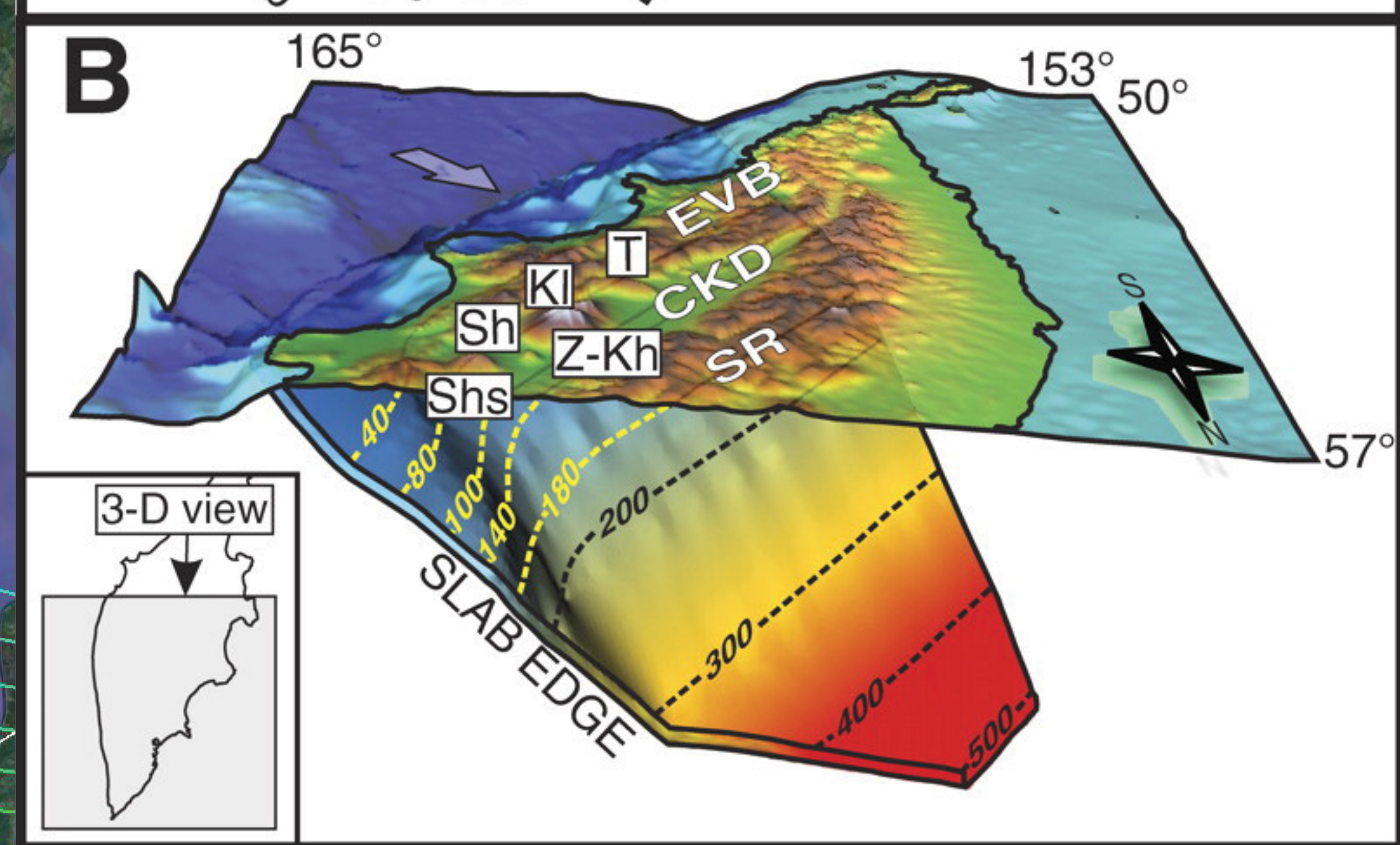
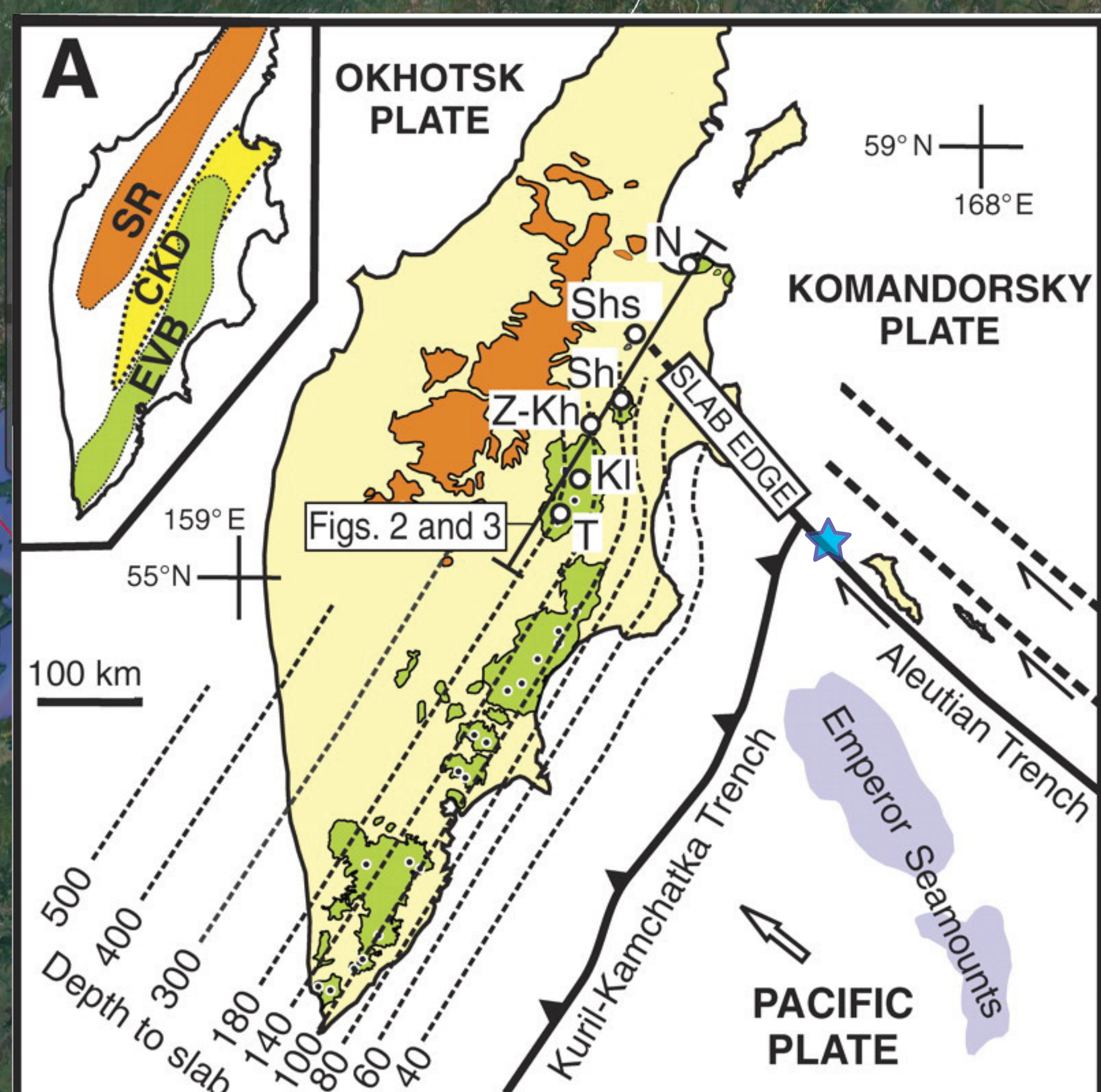
Earthquake Report: 2018.12.20



INTENSITY	I	II-III	IV	V	VI	VII	VIII	IX	X+
Shaking	Not felt	Weak	Light	Moderate	Strong	Very Strong	Severe	Violent	Extreme
Damage	None	None	None	Very slight	Light	Moderate	Moderate/heavy	Heavy	Very heavy
Peak Acc	<0.17	0.17-1.4	1.4-3.9	3.9-9.2	9.2-18	18-34	34-65	65-124	>124
Peak Vel	<0.1	0.1-1.1	1.1-3.4	3.4-8.1	8.1-16	16-31	31-60	60-116	>116

Peak Acc = Peak ground acceleration (g), Peak Vel = Peak ground velocity (cm/s)

M 7.4 Bering Kresla



Konstantinovskaia (2001)

Bindeman et al., (2002)

