

USGS Community Internet Intensity Map
OFFSHORE CHIAPAS, MEXICO

Jun 14 2017 01:38:48 AM local 14.2245N 93.1504W M5.5 Depth: 10 km ID:us20009mbf

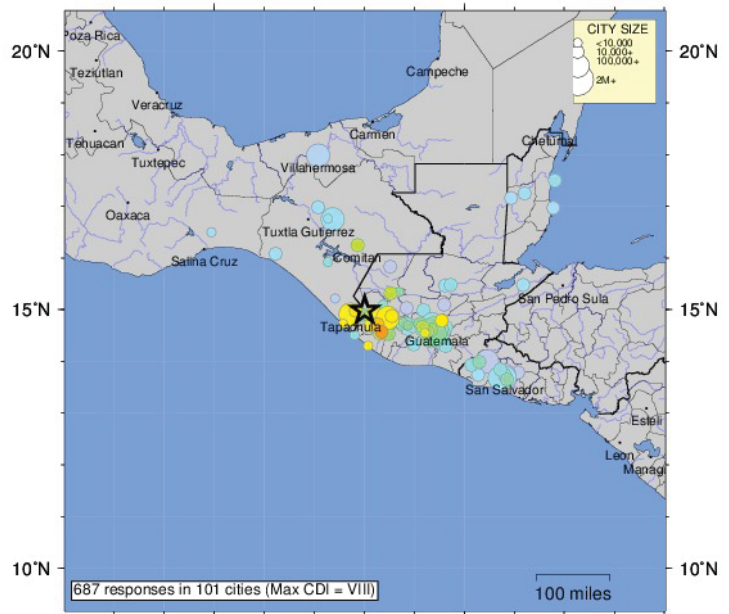


	96°W	94°W	92°W	90°W
SHAKING	Not felt	Weak	Light	Moderate
DAMAGE	none	none	none	Very light
INTENSITY	I	II-III	IV	V

Processed: Wed Jun 14 17:27:47 2017 vmdyfi1

USGS Community Internet Intensity Map
GUATEMALA

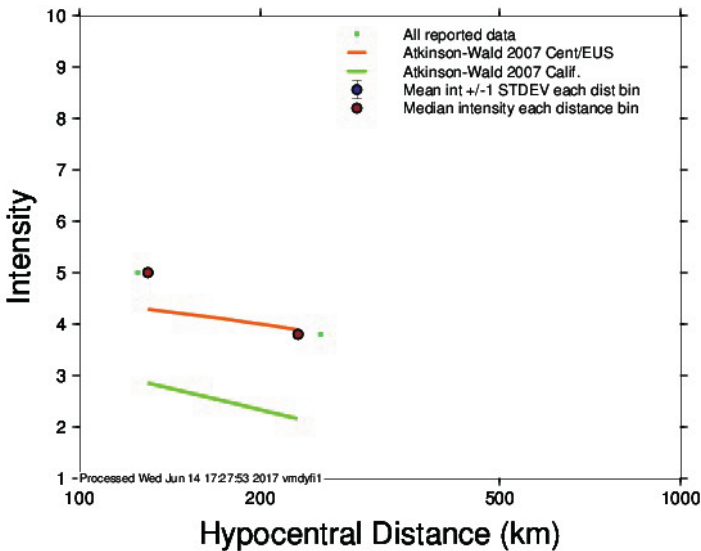
Jun 14 2017 07:29:05 AM UTC 14.9823N 91.9882W M6.9 Depth: 94 km ID:us20009mbt



	95°W	90°W							
SHAKING	Not felt	Weak	Light	Moderate	Strong	Very strong	Severe	Violent	Extreme
DAMAGE	none	none	none	Very light	Light	Moderate	Moderate/Heavy	Heavy	Very Heavy
INTENSITY	I	II-III	IV	V	VI	VII	VIII	IX	X+

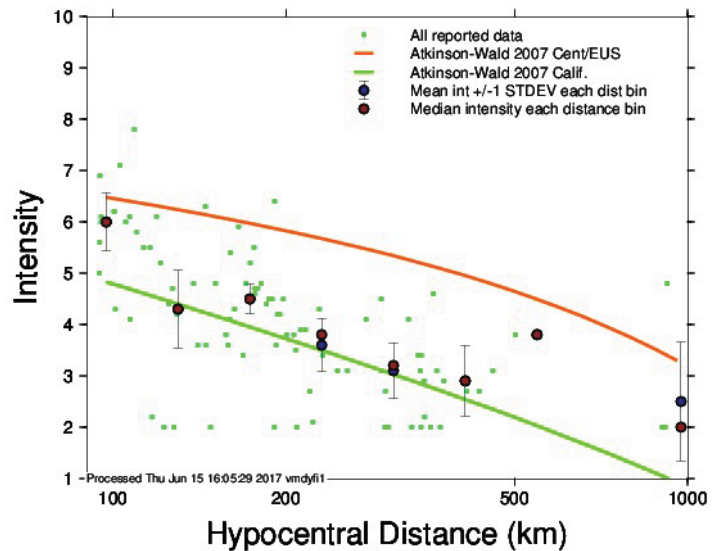
Processed: Thu Jun 15 16:05:24 2017 vmdyfi1

Intensity vs. Distance Plot (ID us20009mbf)



2017.06.14
M 5.5

Intensity vs. Distance Plot (ID us20009mbt)



2017.06.14
M 6.9

USGS "Did You Feel It?"