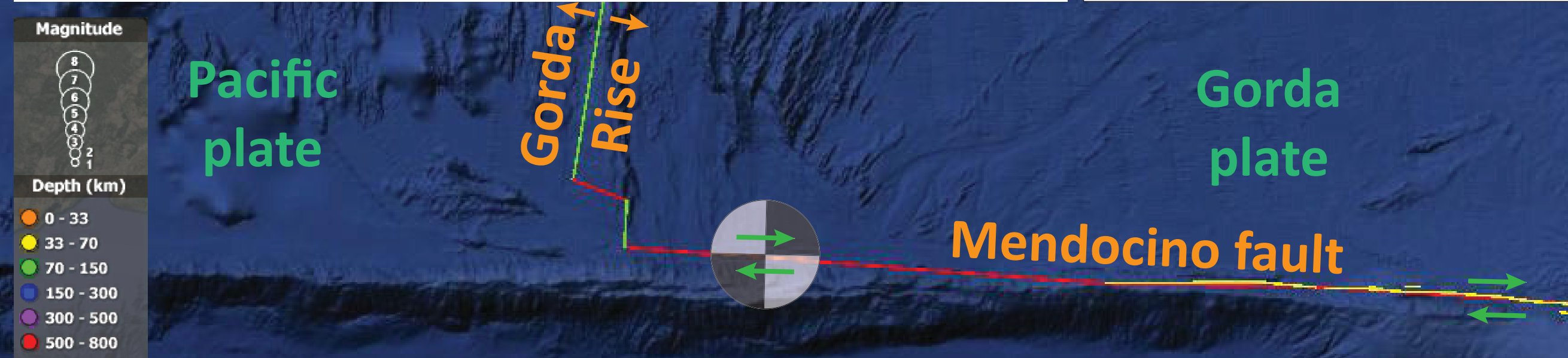


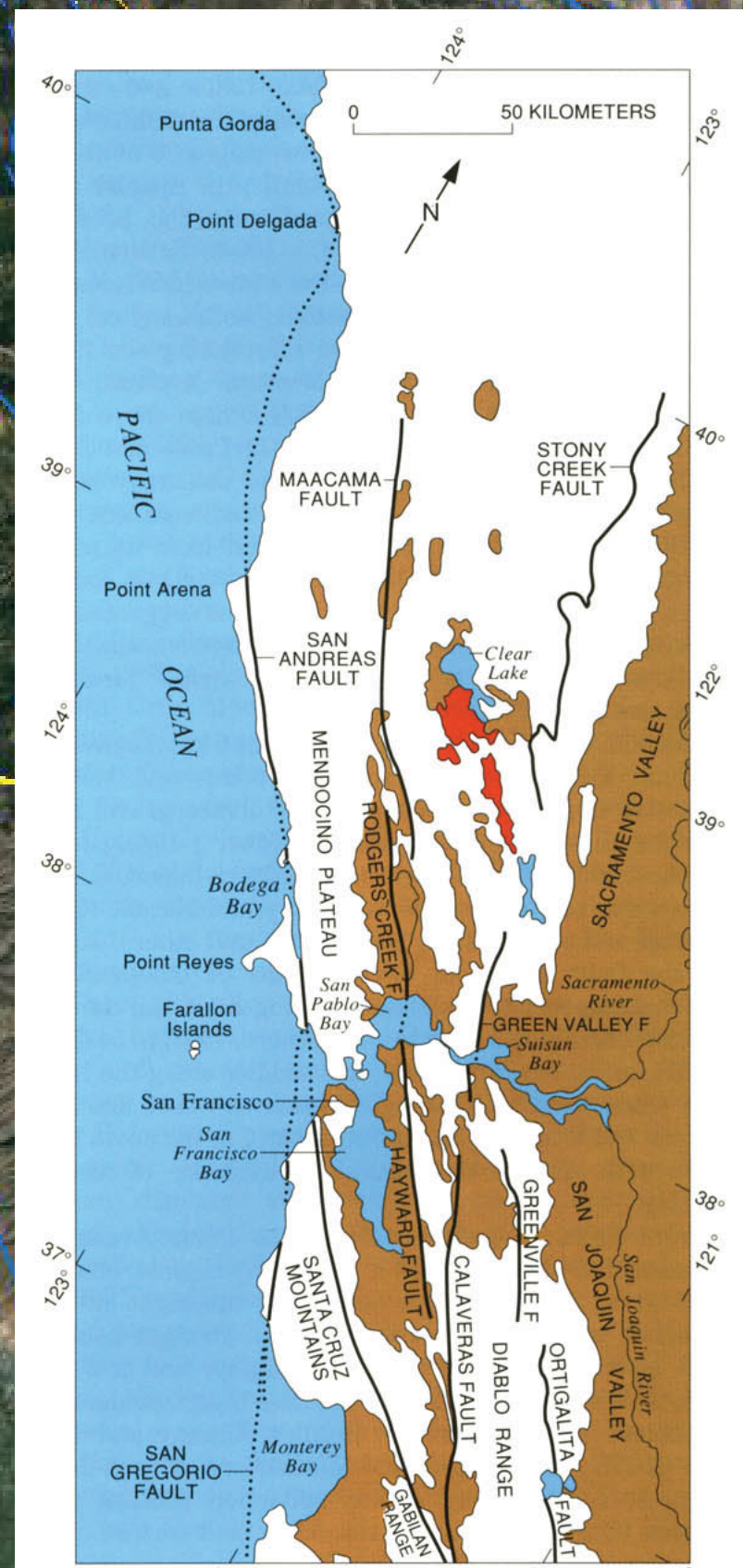
Earthquake Report: 2016.11.03 M 3.8 Laytonville, CA

INTENSITY	I	II-III	IV	V	VI	VII	VIII	IX	X+
Shaking	Not felt	Weak	Light	Moderate	Strong	Very Strong	Severe	Violent	Extreme
Damage	None	None	None	Very slight	Light	Moderate	Moderate/heavy	Heavy	Very heavy
Peak Acc	<0.17	0.17-1.4	1.4-3.9	3.9-9.2	9.2-18	18-34	34-65	65-124	>124
Peak Vel	<0.1	0.1 - 1.1	1.1 - 3.4	3.4 - 8.1	8.1 - 16	16 - 31	31 - 60	60-116	>116



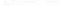

Peak Acc = Peak ground acceleration (g), Peak Vel = Peak ground velocity (cm/s)

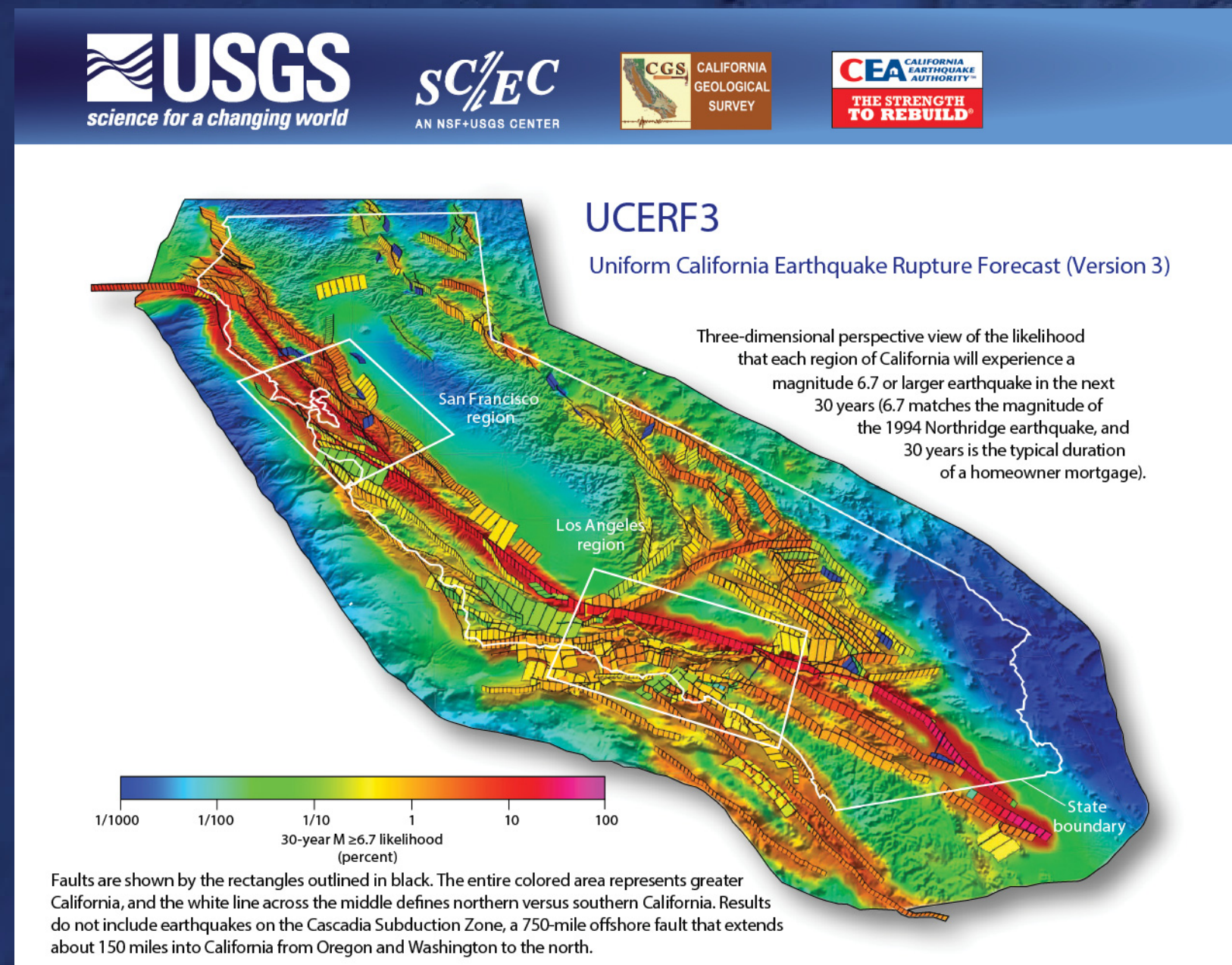
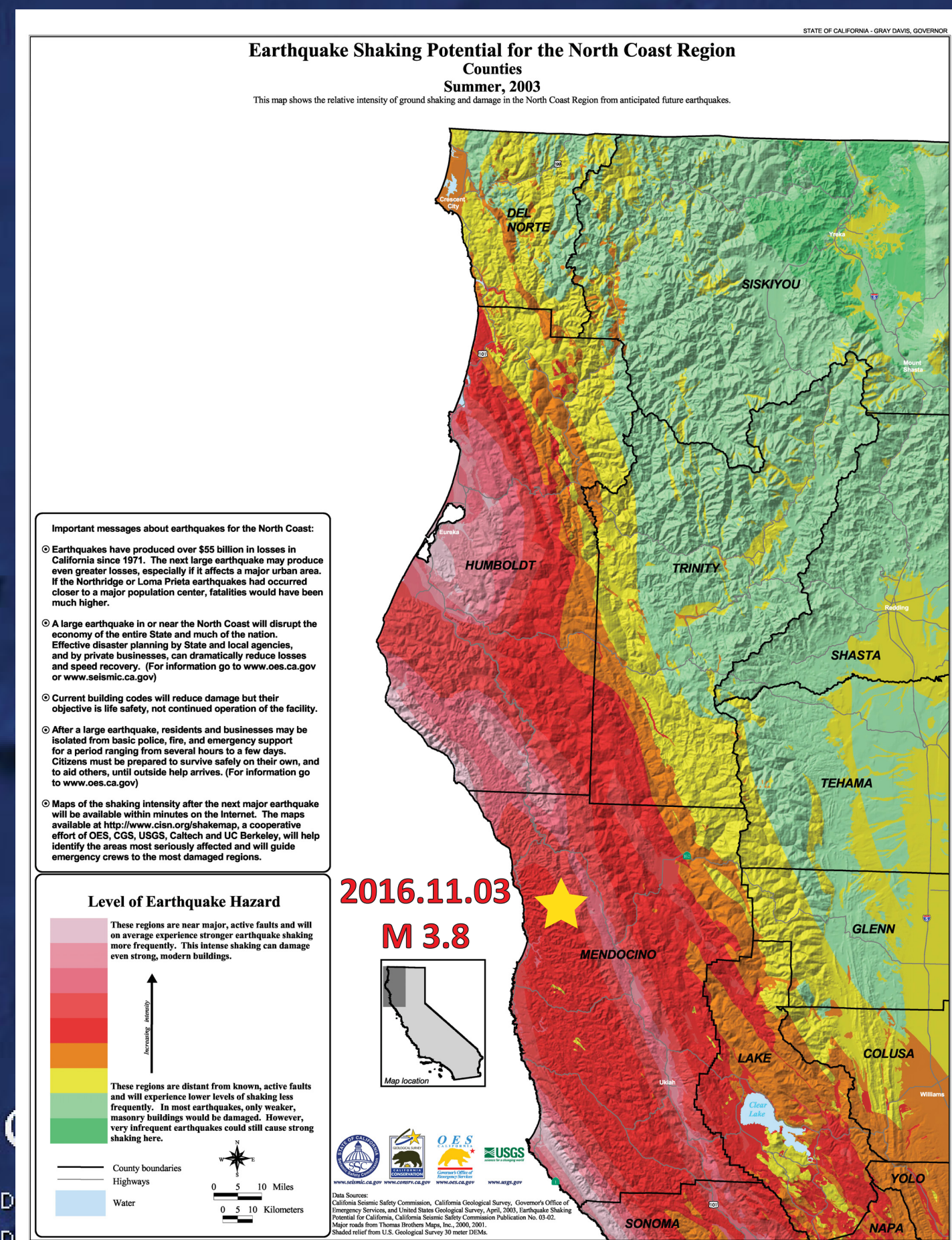


Wallace, 1990

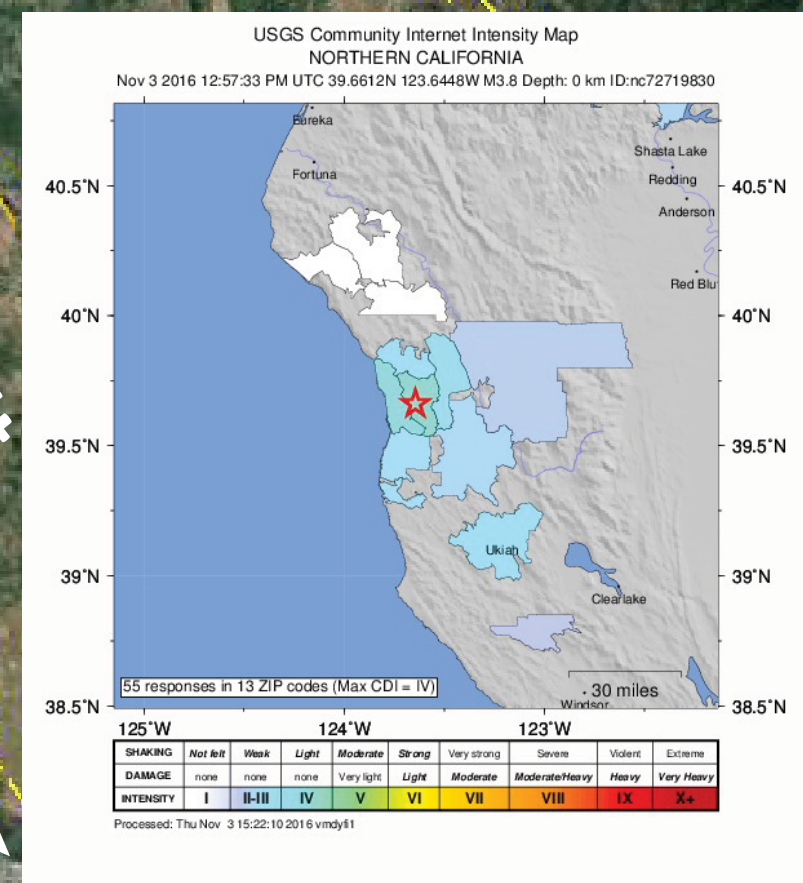


EXPLANATION

-  **Alluvial and estuarine deposits (Quaternary)**—Chiefly basin fill; may also include some Pliocene deposits
 **Clear Lake Volcanics (Quaternary and Tertiary)**—Flows, tuffs, and breccias of dacite and rhyolite and less abundant basalt. Age is late Pliocene to Holocene
 **Bedrock (Tertiary and older)**—Varied rock types
 **Fault exhibiting evidence of Quaternary displacement**—Dotted where concealed by water



Faults are shown by the rectangles outlined in black. The entire colored area represents greater California, and the white line across the middle defines northern versus southern California. Results do not include earthquakes on the Cascadia Subduction Zone, a 750-mile offshore fault that extends about 150 miles into California from Oregon and Washington to the north.



Jason R. Patton
earthjay.com © 2016



80 mi