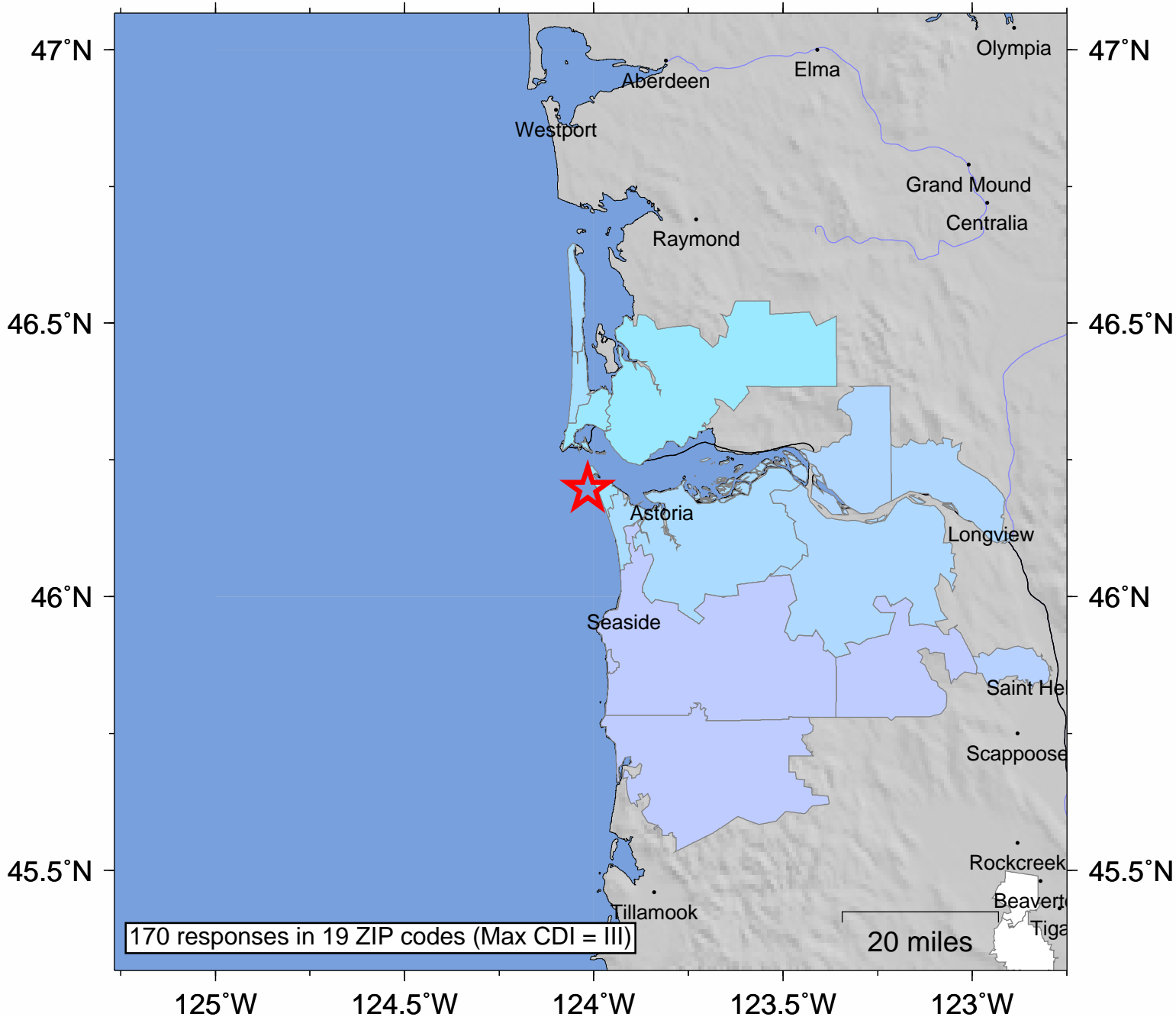


USGS Community Internet Intensity Map OFFSHORE OREGON

Nov 2 2016 02:52:19 PM UTC 46.1963N 124.0155W M3.5 Depth: 37 km ID:uw61227486



SHAKING	<i>Not felt</i>	<i>Weak</i>	<i>Light</i>	<i>Moderate</i>	<i>Strong</i>	Very strong	Severe	Violent	Extreme
DAMAGE	none	none	none	Very light	<i>Light</i>	<i>Moderate</i>	<i>Moderate/Heavy</i>	<i>Heavy</i>	<i>Very Heavy</i>
INTENSITY	I	II-III	IV	V	VI	VII	VIII	IX	X+

Processed: Wed Nov 2 18:16:15 2016 vmdyfi1