

**M 6.6, CENTRAL ITALY**

Origin Time: Sun 2016-10-30 06:40:19 UTC (07:40:19 local)

Location: 42.85°N 13.09°E Depth: 10 km

**PAGER**  
**Version 3**

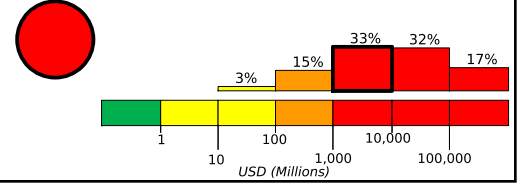
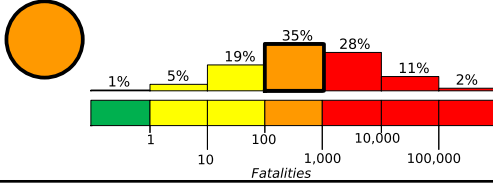
Created: 2 hours, 4 minutes after earthquake

**Estimated Fatalities**

Red alert level for economic losses. Extensive damage is probable and the disaster is likely widespread. Estimated economic losses are less than 1% of GDP of Italy. Past events with this alert level have required a national or international level response.

**Estimated Economic Losses**

Orange alert level for shaking-related fatalities. Significant casualties are likely.

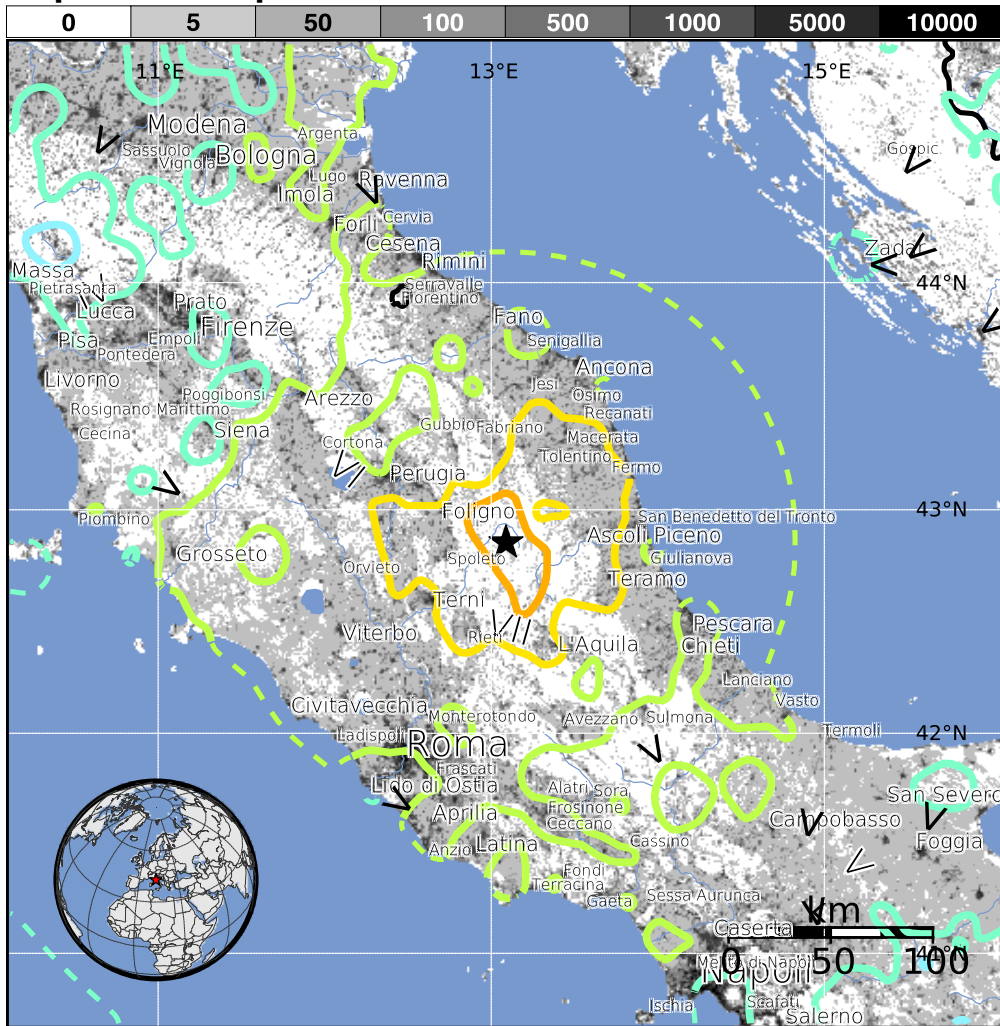


**Estimated Population Exposed to Earthquake Shaking**

ESTIMATED POPULATION EXPOSURE (k = x1000)	- -*	50k*	3,665k*	12,806k*	6,838k	1,182k	50k	0	0	
ESTIMATED MODIFIED MERCALLI INTENSITY	I	II-III	IV	V	VI	VII	VIII	IX	X+	
PERCEIVED SHAKING	Not felt	Weak	Light	Moderate	Strong	Very Strong	Severe	Violent	Extreme	
POTENTIAL DAMAGE	Resistant Structures	none	none	none	V. Light	Light	Moderate	Moderate/Heavy	Heavy	V. Heavy
	Vulnerable Structures	none	none	none	Light	Moderate	Moderate/Heavy	Heavy	V. Heavy	V. Heavy

\*Estimated exposure only includes population within the map area.

**Population Exposure**



**Structures:**

Overall, the population in this region resides in structures that are a mix of vulnerable and earthquake resistant construction. The predominant vulnerable building types are unreinforced brick with mud and mid-rise nonductile concrete frame with infill construction.

**Historical Earthquakes (with MMI levels):**

Date (UTC)	Dist. (km)	Mag.	Max MMI(#)	Shaking Deaths
1976-09-15	384	6.0	IX(234)	11
1976-05-06	393	6.5	IX(55k)	965
1980-11-23	294	6.9	IX(37k)	2k

Recent earthquakes in this area have caused secondary hazards such as landslides that might have contributed to losses.

**Selected City Exposure**

from GeoNames.org

MMI City	Population
VIII Preci	< 1k
VIII Norcia	5k
VIII Visso	1k
VIII Fluminata	< 1k
VIII Accumoli	< 1k
VI Perugia	149k
V Roma	2,563k
IV Napoli	989k
IV Firenze	372k
IV Bologna	371k

bold cities appear on map

(k = x1000)

PAGER content is automatically generated, and only considers losses due to structural damage.

Limitations of input data, shaking estimates, and loss models may add uncertainty.

<http://earthquake.usgs.gov/earthquakes/eventpage/us1000731j>

Event ID: us1000731j