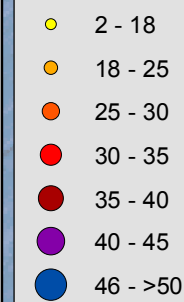


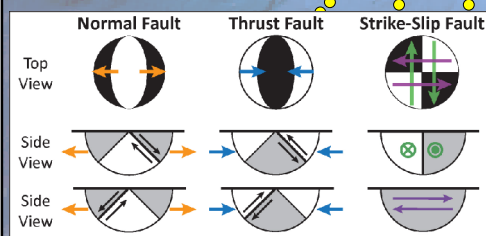
Plate configuration for the Cascadia subduction zone (CSZ). The Juan de Fuca and Gorda plates are subducting northeastwardly oblique beneath the North America plate at ~36 mm/yr in the Humboldt Bay region. Paleoseismic core sites (marine and terrestrial) are plotted as circles.

### Seismicity (NCEDC DD)

#### Depth (km)



### Slab Depth (McCrory et al., 2006)



Chaytor et al., 2004

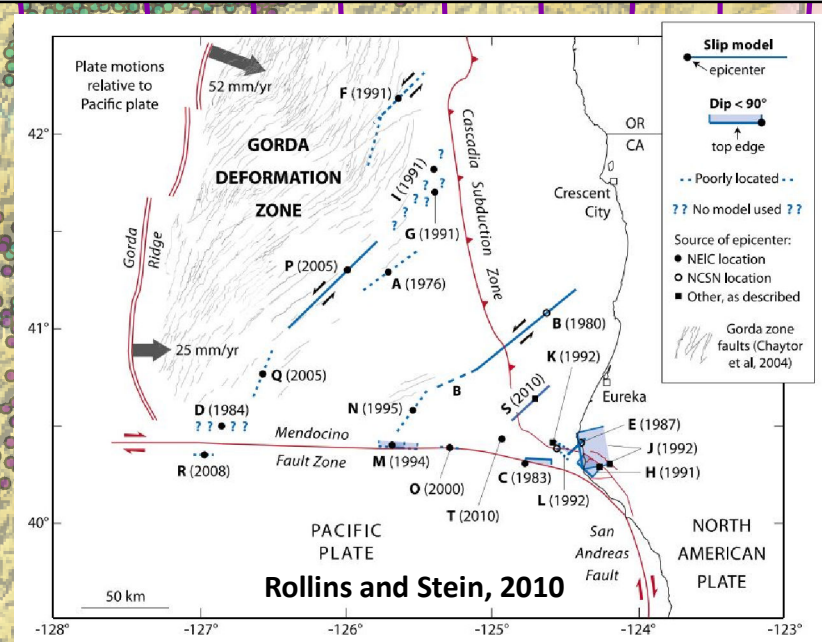
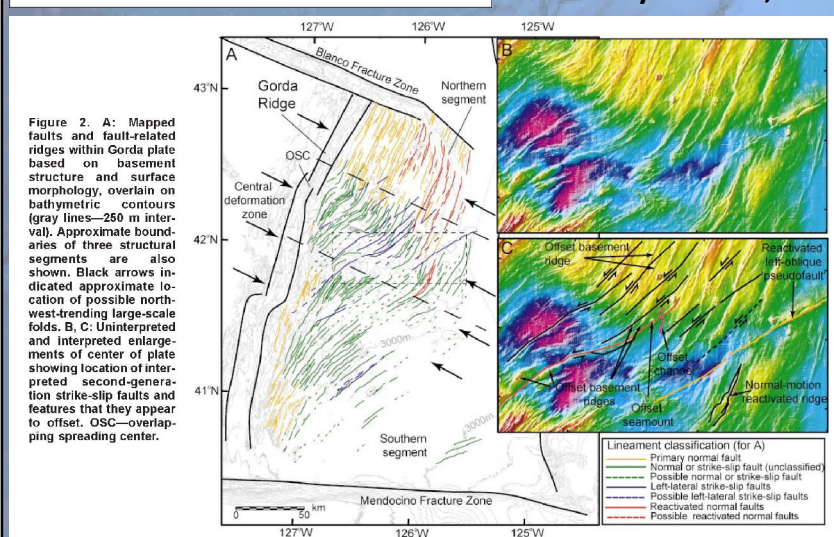
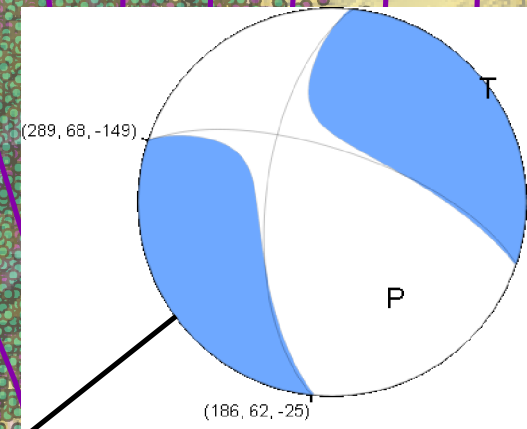


Figure 1. Tectonic configuration of the Gorda deformation zone and locations and source models for 1976–2010  $M \geq 5.9$  earthquakes. Letters designate chronological order of earthquakes (Table 1 and Appendix A). Plate motion vectors relative to the Pacific Plate (gray arrows in main diagram) are from Wilson [1989], with Cande and Kent's [1995] timescale correction.



Tremor

