

M 7.0, KYUSHU, JAPAN

Origin Time: Fri 2016-04-15 16:25:06 UTC (01:25:06 local)

Location: 32.78°N 130.73°E Depth: 10 km

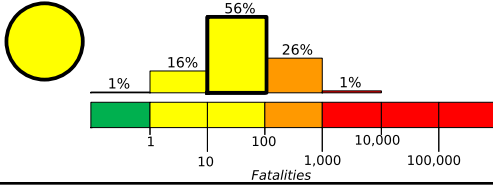
PAGER
Version 1

Created: 21 minutes, 10 seconds after earthquake

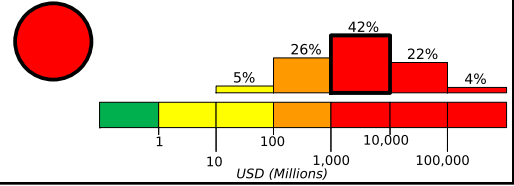
Estimated Fatalities

Red alert level for economic losses. Extensive damage is probable and the disaster is likely widespread. Estimated economic losses are less than 1% of GDP of Japan. Past events with this alert level have required a national or international level response.

Yellow alert level for shaking-related fatalities. Some casualties are possible.



Estimated Economic Losses

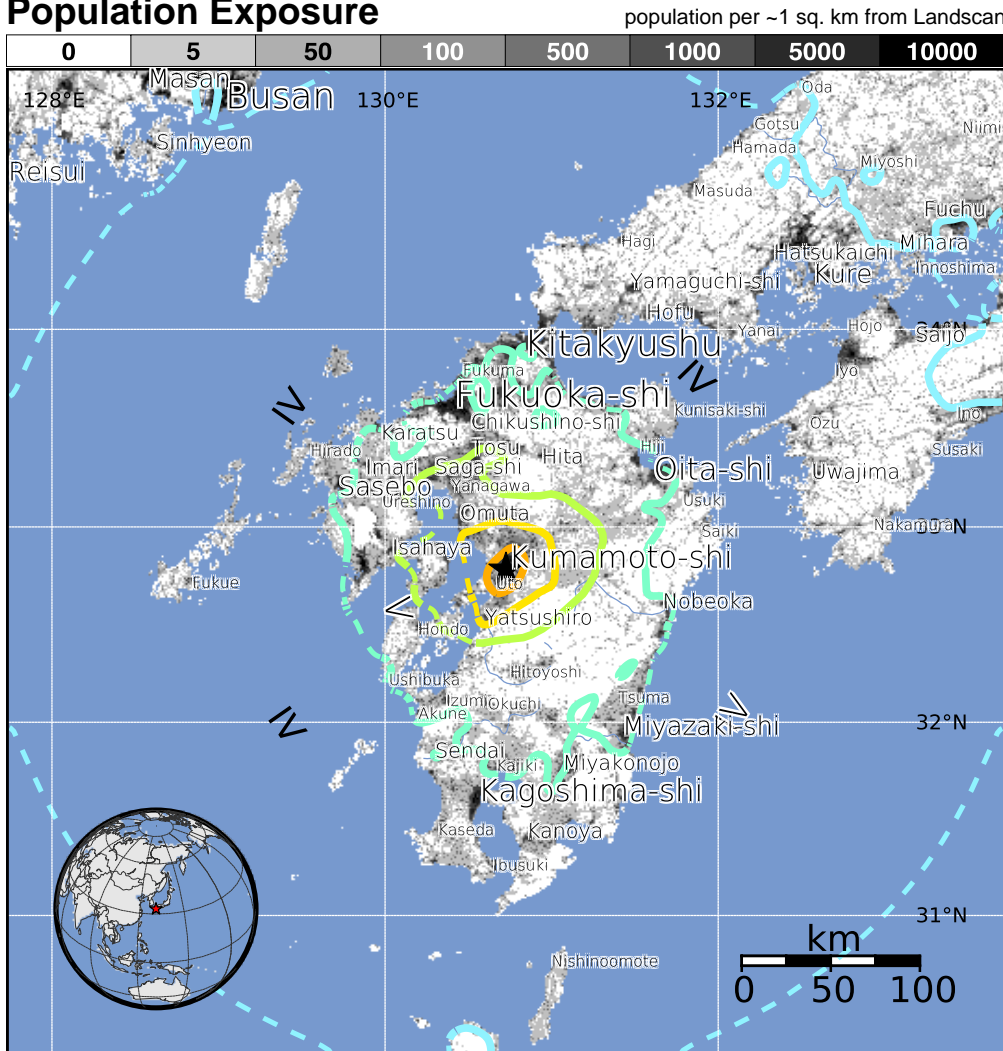


Estimated Population Exposed to Earthquake Shaking

ESTIMATED POPULATION EXPOSURE (k = x1000)	- - *	5,669k*	8,664k	8,510k	1,757k	592k	892k	0	0	
ESTIMATED MODIFIED MERCALLI INTENSITY	I	II-III	IV	V	VI	VII	VIII	IX	X+	
PERCEIVED SHAKING	Not felt	Weak	Light	Moderate	Strong	Very Strong	Severe	Violent	Extreme	
POTENTIAL DAMAGE	Resistant Structures	none	none	none	V. Light	Light	Moderate	Moderate/Heavy	Heavy	V. Heavy
	Vulnerable Structures	none	none	none	Light	Moderate	Moderate/Heavy	Heavy	V. Heavy	V. Heavy

*Estimated exposure only includes population within the map area.

Population Exposure



Structures:

Overall, the population in this region resides in structures that are resistant to earthquake shaking, though some vulnerable structures exist. The predominant vulnerable building types are heavy wood frame and low-rise concrete wall construction.

Historical Earthquakes (with MMI levels):

Date (UTC)	Dist. (km)	Mag.	Max MMI(#)	Shaking Deaths
1997-03-26	95	6.1	VIII(31k)	0
2005-03-20	121	6.6	IX(74k)	1
2001-03-24	223	6.8	VIII(5k)	2

Recent earthquakes in this area have caused secondary hazards such as tsunamis and landslides that might have contributed to losses.

Selected City Exposure

from GeoNames.org

MMI City	Population
VIII Uto	39k
VIII Kumamoto-shi	680k
VII Matsubase	26k
VII Ozu	30k
VII Tamana	46k
VII Ueki	32k
V Fukuoka-shi	1,392k
V Kagoshima-shi	555k
IV Hiroshima-shi	1,144k
IV Changwon	550k
III Busan	3,679k

bold cities appear on map

(k = x1000)

PAGER content is automatically generated, and only considers losses due to structural damage. Limitations of input data, shaking estimates, and loss models may add uncertainty.

<http://earthquake.usgs.gov/earthquakes/eventpage/us20005iis>

Event ID: us20005iis