

Integrated Ocean Drilling Program Expedition 314 Preliminary Report

NanTroSEIZE Stage 1A: NanTroSEIZE LWD Transect

21 September–15 November 2007

Masataka Kinoshita, Harold Tobin, Moe Kyaw Thu,
and the Expedition 314 Scientists



Published by
Integrated Ocean Drilling Program Management International, Inc.,
for the Integrated Ocean Drilling Program

Publisher's notes

Material in this publication may be copied without restraint for library, abstract service, educational, or personal research purposes; however, this source should be appropriately acknowledged. Core samples and the wider set of data from the science program covered in this report are under moratorium and accessible only to Science Party members until 5 February 2009.

Citation:

Kinoshita, M., Tobin, H., Moe, K.T., and the Expedition 314 Scientists, 2008. NanTroSEIZE Stage 1A: NanTroSEIZE LWD transect. *IODP Prel. Rept.*, 314. doi:10.2204/iodp.pr.314.2008

Distribution:

Electronic copies of this series may be obtained from the Integrated Ocean Drilling Program (IODP) Scientific Publications homepage on the World Wide Web at www.iodp.org/scientific-publications.

This publication was prepared by the Japanese Implementing Organization, Center for Deep Earth Exploration (CDEX) at the Japan Agency for Marine-Earth Science and Technology (JAMSTEC), as an account of work performed under the international Integrated Ocean Drilling Program (IODP), which is managed by IODP Management International (IODP-MI), Inc. Funding for the program is provided by the following agencies:

National Science Foundation (NSF), United States

Ministry of Education, Culture, Sports, Science and Technology (MEXT), Japan

European Consortium for Ocean Research Drilling (ECORD)

Ministry of Science and Technology (MOST), People's Republic of China

Korea Institute of Geoscience and Mineral Resources (KIGAM), Interim Asian Consortium

Disclaimer

Any opinions, findings, and conclusions or recommendations expressed in this publication are those of the author(s) and do not necessarily reflect the views of the participating agencies, IODP Management International, Inc., or Japan Agency for Marine-Earth Science and Technology.

Expedition 314 participants

Expedition 314 scientists

Masataka Kinoshita
Co-Chief Scientist
Institute for Research on Earth Evolution
Japan Agency for Marine-Earth Science
and Technology
2-15 Natsushima-cho
Yokosuka 237-0061
Japan
masa@jamstec.go.jp

Harold Tobin
Co-Chief Scientist
Department of Geology and Geophysics
University of Wisconsin-Madison
1215 West Dayton Street
Madison WI 53706
USA
htobin@wisc.edu

Moe Kyaw Thu
Expedition Project Manager
Center for Deep Earth Exploration
Japan Agency for Marine-Earth Science
and Technology
3173-25 Showa-machi, Kanazawa-ku
Yokohama 236-0001
Japan
moe@jamstec.go.jp

Philippe Gaillot
Logging Staff Scientist
Institute for Research on Earth Evolution
Japan Agency for Marine-Earth Science
and Technology
3173-25 Showa-machi, Kanazawa-ku
Yokohama 236-0001
Japan
gaillotp@jamstec.go.jp

Sylvain Bourlange
LWD Specialist (physical properties)
Ecole Nationale Supérieure de Géologie
Centre de Recherches Pétrographiques
et Géochimiques (CNRS)
15 Rue Notre Dame des Pauvres
54501 Vandoeuvre-les-Nancy
France
bourlang@crpg.cnrs-nancy.fr

Chandong Chang
LWD Specialist (physical properties)
Department of Geology
Chungnam National University
220 Gung-dong, Yuseong
Daejeon 305-764
South Korea
cchang@cnu.ac.kr

Marianne Conin
LWD Specialist (physical properties)
CEREGE—College de France
Europole de l'Arbois, Bat Trocadero
BP 80
13545 Aix en Provence Cedex 04
France
mconin@crpg.cnrs-nancy.fr

Sean Gulick
LWD Specialist (log-seismic correlation)
Institute for Geophysics
Jackson School of Geosciences
University of Texas at Austin
10100 Burnet Road (R2200)
Austin TX 78758-4445
USA
sean@ig.utexas.edu

Maria José Jurado Rodriguez
LWD Specialist (log characterization and lithologic interpretation)
Geophysics and Geohazards Department
Institute of Earth Sciences, CSIC Barcelona
Lluís Solé Sabarís s/n
08028 Barcelona
Spain
mjjurado@ija.csic.es

Kylara M. Martin
LWD Specialist (log characterization and lithologic interpretation)

Institute for Geophysics
Jackson School of Geosciences
University of Texas at Austin
10100 Burnet Road (R2200)
Austin TX 78758-4445
USA

kylara@mail.utexas.edu

Lisa McNeill
LWD Specialist (structural geology and geomechanics)

National Oceanography Centre, Southampton
School of Ocean and Earth Science
University of Southampton
Southampton SO14 3ZH
United Kingdom

lcmn@noc.soton.ac.uk

Ayumu Miyakawa
LWD Specialist (physical properties)

Department of Civil and Earth Resources
Engineering
Kyoto University
C1-1-118 Kyotodaigakukatsura, Nisigyo-ku
Kyoto 615-8246
Japan

miyakawa@earth.kumst.kyoto-u.ac.jp

J. Casey Moore
LWD Specialist (structural geology and geomechanics)

Earth and Planetary Sciences Department
University of California, Santa Cruz
Santa Cruz CA 95064
USA

cmoore@es.ucsc.edu

Yasuyuki Nakamura
LWD Specialist (log-seismic correlation)

Ocean Research Institute
University of Tokyo
1-15-1 Minamidai, Nakano-ku
Tokyo 164-8639
Japan

saru@ori.u-tokyo.ac.jp

Sanetsu Saito
LWD Specialist (log characterization and lithologic interpretation)

Institute for Research on Earth Evolution
Japan Agency for Marine-Earth Science
and Technology
2-15 Natsushima-cho
Yokosuka 237-0061
Japan

saito@jamstec.go.jp

Dale S. Sawyer
LWD Specialist (log-seismic correlation)

Department of Earth Science
Rice University MS-126
6100 Main Street
Houston TX 77005
USA

dale@rice.edu

Joanne Tudge
LWD Specialist (log characterization and lithologic interpretation)

Department of Geology
University of Leicester
Leicester LE1 7RH
United Kingdom

Jt58@le.ac.uk

Yasuhiro Yamada
LWD Specialist (structural geology and geomechanics)

Civil and Earth Resources Engineering
Department
Kyoto University
Katsura, Nishikyo
Kyoto 615-8540
Japan

yamada@earth.kumst.kyoto-u.ac.jp

NanTroSEIZE specialty coordinators

Toshiya Kanamatsu (11–15 November 2007)
Institute for Research on Earth Evolution
Japan Agency for Marine-Earth Science
and Technology
3173-25 Showa-machi, Kanazawa-ku
Yokohama 236-0001
Japan
toshiyak@jamstec.go.jp

Gaku Kimura (11–15 November 2007)
Structural Geology
Department of Earth and Planetary Science
Graduate School of Science
University of Tokyo
7-3-1 Hongo, Bunkyo-ku
Tokyo 113-0033
Japan
gaku@eps.s.u-tokyo.ac.jp

Gregory Moore
(21 September–15 November 2007)
Core-Log-Seismic Integration
Institute for Research on Earth Evolution
Japan Agency for Marine-Earth Science
and Technology
3173-25 Showa-machi, Kanazawa-ku
Yokohama 236-0001
Japan
gmoore@jamstec.go.jp

Demian Saffer
(29 October–15 November 2007)
Physical Properties
Pennsylvania State University
0310 Deike Building
University Park PA 16802
USA
dsaffer@geosc.psu.edu

Michael B. Underwood
(26 October–15 November 2007)
Sedimentology
University of Missouri
307 Geology Building
Columbia MO 65211
USA
underwoodm@missouri.edu

Shipboard personnel and technical representatives

Captains (Seadrill)
Kazuo Ichiyama
Yuji Onda

Offshore Installation Managers (Seadrill)
Simon Cook
Bjorn Hansson
Scott Pederson

Operations Superintendents (CDEX)
Tsuyoshi Abe
Ikuo Sawada

Core-Log-Seismic Integrators (CDEX)
Yukari Kido
Yoshinori Sanada

Coring Supervisor (AAI)
James T. Aumann

Curators (Marine Works Japan)
Satoshi Hirano
Masaru Yasunaga

**Data Consulting Service Senior
Geophysicist (Schlumberger)**
Liu Wei

Drilling Engineers (CDEX)
Kazuhiro Higuchi
Daiji Ikenomoto
Kunihiro Muta
Tomokazu Saruhashi

Information Technology Managers (CDEX)

Yoshihiro Shiga
Kyoma Takahashi

Laboratory Officers (Marine Works Japan)

Kazuhiro Hayashi
Toshikatsu Kuramoto

**Assistant Laboratory Officers
(Marine Works Japan)**

Hiroaki Muraki
Tomoyuki Tanaka

**Laboratory Technicians
(Marine Works Japan)**

Akihiko Fujihara
Shoko Fujii
Tsutomu Fujii
Toru Fujiki
Masumi Ishimori
Naoya Kanna
Yoshiki Kido
Ryo Kurihara
Lena Maeda
Shunsuke Miyabe
Junichi Mizuno
Soichi Moriya
Hideki Mukoyoshi
Masahiro Nishimura
Takuroh Noguchi
Yoshifumi Noiri
Hajime Sato
Nami Suzuki
Takahiro Suzuki

**Logging While Drilling Engineers
(Schlumberger)**

Yang Kai Chi
Mario Jakulj
Qin Guang Ming
Marcelo Tanaka
Chen Xi

Publication Assistants

Chiaki Igarashi (CDEX)
Yusuke Kubo (CDEX)
Debbie Partain (USIO)
Sean Toczko (CDEX)

seismicVISION Personnel (Schlumberger)

Sharrif Faruk
Naveen Sundra
Akira Yoshizawa
Afiq Zainudin

Technical Advisers (CDEX)

Katsuyoshi Koseki
Tsuyoshi Miyazaki
Yuichi Shinmoto
Kazuyasu Wada

Wellsite Geologists (CDEX)

Chikara Hiramatsu
Gyuhwan Jo
Toshio Kaminishi
Kiyoshi Koide
Toru Nakasone
Shigenobu Uraki
Hiroyuki Yokoyama

Abstract

Integrated Ocean Drilling Program (IODP) Expedition 314 was a milestone, both as the inaugural scientific drilling mission of the new vessel, *Chikyu*, and as the first step in the multistage Nankai Trough Seismogenic Zone Experiment (NanTroSEIZE), an ambitious, coordinated, multiplatform, and multiexpedition drilling project designed to investigate fault mechanics and seismogenesis along subduction megathrusts through direct sampling, in situ measurements, and long-term monitoring.

During Expedition 314, our primary goals were to obtain a comprehensive suite of geophysical logs and other downhole measurements at sites along a transect from the incoming plate to the Kumano forearc basin using state-of-the-art logging-while-drilling (LWD) technology. Drilling and logging was successfully completed at four sites, ranging in depth below the seafloor from 400 to 1400 m, with partial success at a fifth site. These sites included the frontal thrust and toe region of the outer accretionary prism near the trench, the fault zone and associated thrust sheet of a major out-of-sequence thrust system (the “megasplay” fault), 1 km thick forearc basin deposits, and highly deformed rocks of the interior of the accretionary prism. The principal goals of the LWD program were to document in situ physical properties; stratigraphic and structural features; sonic to seismic scale velocity data for core-log-seismic integration; and stress, pore pressure, and hydrological parameters through both scalar and imaging log measurements. All four sites are slated for continuous core sampling during subsequent IODP NanTroSEIZE expeditions.

Depth objectives for this expedition ranged from ~400 to 1400 meters below seafloor. Logging included the measurement of natural gamma radiation, azimuthal gamma ray density, neutron porosity, full waveform sonic velocity, azimuthal resistivity imaging, zero-offset vertical seismic profile, ultrasonic caliper, and annular fluid pressure, though not all logs in this suite were collected at all sites.

Principal results of Expedition 314 include the following:

1. The megasplay thrust sheet is composed of highly deformed and fractured rocks that are anomalously well indurated relative to their present depth.
2. Present-day stress varies markedly along the NanTroSEIZE transect, and stresses in the upper 1.4 km are strongly compressional in the outer, active accretionary prism but extensional in the forearc basin.
3. The occurrence of gas hydrate as a cement preferentially located in sandy portions of turbidite beds above a bottom-simulating reflector was quantified.

4. Drilling at Sites C0001 and C0002 also provides important pilot hole information that will help prepare for the planned deep-riser sites for later stages of NanTroSEIZE drilling.

Introduction

The Nankai Trough Seismogenic Zone Experiment (NanTroSEIZE) is a multiyear, multistage, and multiplatform effort planned for the Integrated Ocean Drilling Program (IODP). Out of four operational stages, the first stage of NanTroSEIZE drilling operations comprises three individual expeditions (314, 315, and 316) being conducted by the new riser-capable drilling vessel, *Chikyu*, beginning September 2007. The primary objectives of Expedition 314 were to obtain a comprehensive suite of geophysical logs and other downhole measurements at six sites (Figs. F1, F2) using state-of-the-art logging-while-drilling (LWD) technology. These six sites are designed to accomplish the principal goals of the NanTroSEIZE Science Plan, including documenting the material inputs to the subduction conveyor (fluid, solids, and heat), the properties of major thrust faults and their wall rocks at depths shallower than ~1.4 km, and the geology of the accretionary prism and overlying slope basin sediments (Tobin and Kinoshita, 2006a; Kinoshita et al., 2006). Four of these six sites have been or are slated for continuous core sampling during the two subsequent Expeditions 315 and 316, immediately following Expedition 314.

During Expedition 314, we acquired borehole LWD data by drilling dedicated holes with a drill string with the logging instruments incorporated into drill collars just above the drilling bit. A number of previous Ocean Drilling Program (ODP) and IODP expeditions have employed LWD technology (Riedel et al., 2006; Flemings et al., 2006; Tréhu, Bohrmann, Rack, Torres, et al., 2003; Mikada, Becker, Moore, Klaus, et al., 2002; Kelemen, Kikawa, Miller, et al., 2004). We deployed Schlumberger LWD/measurement-while-drilling (MWD) tools including the following:

- geoVISION: records formation resistivity, including 360° borehole resistivity imaging and spectral natural gamma radiation
- adnVISION: mainly records neutron porosity and gamma ray density
- sonicVISION: provides sonic *P*-wave velocity
- seismicVISION: records check shot vertical seismic profile (VSP) arrivals during LWD drilling and therefore provides interval velocity.

Additional measurements primarily intended for monitoring drilling conditions (MWD), such as torque, downhole weight on bit, and so on, as well as borehole pore fluid pressure (annular pressure while drilling [APWD]) were recorded and also transmitted using MWD uphole telemetry.

Expedition 314 was entirely dedicated to the LWD effort, and only minor coring and no downhole measurement operations took place. Logging data were analyzed initially by the Shipboard Scientific Party and made available to the scientific parties of the other NanTroSEIZE Stage 1 expeditions.

Geological setting

The Nankai Trough is a subducting plate boundary, where the Philippine Sea plate underthrusts the southwestern Japan margin at a rate of ~4.1–6.5 cm/y along an azimuth of 300°–315°N (Seno et al., 1993; Miyazaki and Heki, 2001) down an interface dipping 3°–7° (Kodaira et al., 2000). The subducting lithosphere of the Shikoku Basin was formed by backarc spreading at 15–25 Ma (Okino et al., 1994). The Nankai subduction zone forms an “end-member” sediment-dominated accretionary prism. In the toe region off Muroto, a sedimentary section ~1 km thick is accreted to or underthrust below the margin (Moore et al., 2001).

The three major seismic stratigraphic sequences identified in the northern Shikoku Basin are the lower and upper Shikoku Basin sequences and the Quaternary turbidite sequences (Fig. F3). The upper Shikoku Basin facies off Kumano decreases modestly in thickness toward the north, whereas the lower Shikoku Basin facies displays a much more complicated geometry as a result of the effects of basement topography (Le Pichon et al., 1987a, 1987b; Mazzotti et al., 2000; Moore et al., 2001). Seismic thickness decreases above larger basement highs and a more transparent acoustic character indicates local absence of sand packages that characterize most other parts of the lower Shikoku Basin. The mechanical differences between subducting basement highs and subducting basement plains could be significant for fault zone dynamics and earthquake rupture behavior.

The deformation front behavior off Kumano is fundamentally different than it is at previous targets of ODP drilling off Muroto or Ashizuri, several hundred kilometers to the southwest. Seismic reflection data off Kumano clearly delineate the frontal fault near the prism toe; however, there is little evidence for seaward propagation of the décollement within deeper Shikoku Basin strata (see “Proposal 603A-Full2” at

www.iodp.org/nantroseize-downloads). One interpretation of the seismic profile is that the décollement steps up to the seafloor, thereby thrusting older accretionary prism strata (upper Shikoku Basin facies?) over the upper Quaternary trench-wedge facies (Fig. F3). Manned submersible observations also indicate that semilithified strata of unknown age have been uplifted and exposed along a fault scarp at the prism toe (Ashi et al., 2002). Farther inboard, the fault ramps down into the lower Shikoku Basin facies (Park et al., 2002).

The lower forearc slope consists of a series of thrust faults that have shortened the accreted sedimentary units of the accretionary prism. A combination of swath bathymetric and multichannel seismic (MCS) data show a pronounced continuous outer ridge (outer arc high) of topography extending >120 km along strike, which may be related to megasplay fault slip, including the 1944 Tonankai M 8.2 earthquake and repeated previous earthquakes. Remotely operated vehicle (ROV) and manned submersible diving surveys along this feature reveal a very steep slope on both sides of the ridge (Ashi et al., 2002; unpubl. data). The outer arc high coincides with the updip end of the splaying system of thrust faults that branch from a strong seismic reflector interpreted by Park et al. (2002) as a major out-of-sequence thrust, which we term the “megasplay” because it is a feature that traverses the entire wedge and has had a protracted history shown by the thick forearc basin trapped behind its leading edge (Moore et al., 2007). The megasplay is hypothesized to represent the mechanical boundary between the inner and outer accretionary wedge and between aseismic and seismogenic fault behavior (Wang and Hu, 2006). At depth this megasplay is a high-amplitude reflector (Fig. F2), and it branches into a family of thrust splays in the upper few kilometers below the seafloor, including thrust splay drilled on this expedition

The most direct evidence for recent megasplay fault activity comes from stratigraphic relationships at the tips of the faults in young slope sediments. Direct fault intersections with the seafloor are not observed (Moore et al., 2007); however, the thrust sheets wedge into these deposits, causing tilt and slumping of even the deposits nearest to the surface.

Other direct evidence that the megasplay fault has been active in geological to recent times comes from Kumano forearc basin stratigraphy. The Kumano Basin is characterized by flat topography at ~2000 m depth and is filled with turbiditic sediments to a maximum thickness of ~2000 m. Little is known regarding the detailed stratigraphy of the Kumano Basin, but several remarkable features are recognized in the seismic

profiles (Fig. F4). The overall sedimentary sequences filling the basin can be divided into four main units by unconformities based on seismic reflection stratigraphy. The sediments in the southern part of the basin are tilted northward, truncated by a flat erosional surface, and subsequently cut by normal faults (Park et al., 2002). The depositional center appears to have migrated northward after each successive unconformity.

The sequences above the unconformities are tilted less than those below the unconformities. All of the sediments pinch out toward the north. All of these features appear to be caused by uplift of the outer rise and potentially by postseismic relaxation after coseismic slip on the splay faults (Park et al., 2002).

Seismic studies/site survey data

The off-Kii and Kumano Basin region is among the best-studied subduction zone forearcs in the world. A significant volume of site survey data has been collected in the drilling area over many years, including multiple generations of two-dimensional seismic reflection (e.g., Park et al., 2002), wide-angle refraction (Nakanishi et al., 2002; Nakanishi et al., submitted), passive seismicity (e.g., Obana et al., 2001), heat flow (Kinoshita et al., 2003), side-scan sonar, and swath bathymetry as well as submersible and ROV dive studies (Ashi et al., 2002).

In 2006, a joint, three-dimensional (3-D) seismic reflection survey was conducted by Japanese and U.S. scientists over a ~11 km × 55 km area, acquired under contract by Petroleum GeoServices, an industry service company (Fig. F1) (Moore et al., 2007). The poststack trace spacing is 12.5 m in the inline direction and 18.75 m in the cross-line direction. This 3-D volume—the first deep-penetration, fully 3-D marine survey ever acquired for basic research purposes—has been used to refine the selection of drill sites and targets in the complex megasplay fault region and define the regional structure and seismic stratigraphy. As the drilling proceeds, the 3-D seismic data will continue to be used to analyze physical properties of the subsurface through seismic attribute studies, to expand findings in the boreholes to wider areas, and to assess drilling safety.

Scientific objectives

The over-arching objective of the LWD program was to provide borehole data that will be used in conjunction with cores to document the geology, physical properties,

mechanical state, fluid content, and stress conditions at the drilling site locations. Specifically, we wanted to document the following:

1. Physical properties. We planned to record density, porosity, resistivity, and sonic velocity for each borehole. These logs provide key in situ information that, together with the core-based sample data, will be used to quantify the mass and materials that make up the Nankai margin. Drilling targets for which physical properties are especially relevant include zones of anomalous compaction state, gas hydrate bottom-simulating reflectors (BSRs), and fault zones and adjacent wall rocks. In practice, we were able to obtain all of these types of logging data, but not all types from every site drilled. In particular, the lack of a neutron source during drilling of Sites C0004 and C0006 prevented the porosity and density data from being acquired, and tool failure limited sonic data from Site C0006.
2. Lithology. We also recorded natural gamma ray data. Together with the logs described above, these data were used to develop an integrated log-based lithologic characterization and logging unit definition.
3. Structural geology. Borehole imaging logs, principally the azimuthal resistivity, permitted interpretation of bedding dip, fracture presence and orientation, and other rock fabric data. These data will be useful in conjunction with core data to develop a complete structural description, including in situ orientation of structures.
4. In situ fluid pressure and stress. Borehole imaging logs were also used to detect borehole breakouts and drilling-induced tensile fractures (e.g., McNeill et al., 2004; Wu et al., 2007), which are useful for determining the orientation of the present-day horizontal principal stresses. The APWD log is primarily a drilling parameter measurement, as it measures the fluid pressure in the open borehole near the bit; however, it can be an indicator of steep gradients in formation pressure or other anomalies. Sonic velocity is potentially another indirect indicator of stress conditions.
5. Core-log-seismic integration. Several of the logs provided key information for creating synthetic seismograms that tie 3-D seismic attributes to cores and borehole depth. The seismic-while-drilling (SWD), or check shot-style VSP is principal among these, providing borehole depth ties at similar wavelengths to that of the MCS data.
6. Drilling conditions. APWD, downhole weight on bit (WOB), torque, drilling rate, and other parameters are primarily used to assess the drilling conditions. However, these measurements can provide useful information about formation

strength and other environmental variables relevant to the scientific objectives and also relevant for planning the well drilling and casing program for subsequent riser drilling.

Operational strategy

To achieve the overall scientific objectives of the NanTroSEIZE project, drilling was planned at six primary sites and two contingency sites. As many as three sites targeted the incoming plate section, one was to sample the frontal thrust of the accretionary wedge, two sites targeted the megasplay fault system at different depths, one site sampled the megasplay uplift history recorded in the forearc basin sediments, and one ultradeep site targeted the plate interface in the seismogenic zone. See Tobin and Kinoshita (2006a) for details of the four-stage plan to complete these objectives. NanTroSEIZE Stage 1A called for drilling and sampling in riserless mode at six of the sites during Expeditions 314–316, including:

- The incoming sediments of Shikoku Basin (two sites),
- The frontal thrust system at the toe of the accretionary wedge,
- The midwedge megasplay fault system, and
- Approximately 1000 m deep holes at the two sites planned for later deep penetrations of the seismogenic zone faults.

Primary drill sites

During Expedition 314 the order of drilling at the six sites was determined by scientific priority and operational difficulty. The plan was to drill at proposed Site NT1-01A to the top of the basement at ~600 meters below seafloor (mbsf) and continue to proposed Site NT2-03B to drill below the possible fault zone at ~1000 mbsf, drill to 1400 mbsf at the future deep riser hole at proposed Site NT3-01B, drill to 1000 mbsf to pass through the splay fault reflector and into the footwall within accretionary prism at proposed Site NT2-01B, drill to 950 mbsf at the frontal thrust site at proposed Site NT1-03A, and to finish with 1200 m of drilling to reach the top of the oceanic crust at proposed Site NT1-07A (Kinoshita et al., 2007) (Figs. F5, F6).

Because of concerns regarding geological hazards, operations to drill two pilot holes at proposed Sites NT2-03B and NT1-03A were added to the operational plan prior to drilling with LWD/MWD tools at the six primary sites. In addition, geotechnical cor-

ing of the top section of the future Stage 2 riser hole at proposed Site NT2-03A was put in the plan, owing to urgency to obtain strength data for riser wellhead deployment.

During the course of drilling, delays occurred during many of the early operations; therefore, the original plan was modified to drill LWD sites right after the first pilot Hole C0001A. Holes C0001B, C0001C, and C0001D were subsequently drilled at Site C0001, and Holes C0002A and C0003A followed. After the loss of the LWD/MWD bottom-hole assembly (BHA) while drilling at Site C0003 (see “[Site C0003](#)”) the drilling plan was modified again because it was deemed operationally necessary to drill pilot holes with either ROV monitoring of the drill site at the seafloor and/or MWD-only measurements to ensure hole safety. Three pilot holes without any LWD/MWD tools (Holes C0004A, C0005A, and C0005B) and one LWD hole were drilled in the vicinity of proposed Site NT2-01 (Hole C0004B). After this, the ship moved to the proposed Site NT1-03B area and drilled one pilot hole with MWD tools (Hole C0006A) and one LWD hole (C0006B) before the end of the expedition.

During the planning stage, 22.5 contingency days were factored into the expedition for typhoons, mechanical downtime, and casing operations at proposed Sites NT2-03B and NT2-01D. However, actual days used for each site and operations during the expedition were generally quite different from the original plan. Failure and repair of the dynamic positioning system, fishing for the stuck BHA and cementing operations in Hole C0003A, and numerous other operational delays such as ROV maintenance, Kuroshio current-related operations, and checking and maintaining rig-floor, guide-horn, and derrick mechanical systems at intervals were responsible for the differences.

Logging strategy

Difficulties in attempted wireline logging during previous legs at Nankai and other accretionary prisms and, conversely, the successful experience of ODP Leg 196 (Mikada, Becker, Moore, Klaus, et al., 2002) at Nankai and other previous LWD expeditions clearly indicated that LWD was best suited to acquire in situ physical property data in the Nankai accretionary prism. LWD surveys have been very successful in obtaining logs from active prisms during the following ODP legs and IODP expeditions:

- Leg 156: North Barbados Ridge, tropical northwest Atlantic (Shipley, Ogawa, Blum, et al., 1995)

- Leg 170: Costa Rica convergent margin, equatorial northeast Pacific (Kimura, Silver, Blum, et al., 1997)
- Leg 171A: North Barbados Ridge, tropical northwest Atlantic (Moore, Klaus, et al., 1998)
- Leg 196: Nankai Trough northwest Pacific (Mikada, Becker, Moore, Klaus, et al., 2002)
- Legs 174A: New Jersey shelf, northwest Atlantic (Austin, Christie-Blick, Malone, et al., 1998)
- Leg 188: Prydz Bay, Antarctic (O'Brien, Cooper, Richter, et al., 2001)
- Leg 193: Manus Basin, Bismarck Sea (Binns, Barriga, Miller, et al., 2002)
- Leg 204: Hydrate Ridge-Cascadia margin, northeast Pacific (Tréhu, Bohrmann, Rack, Torres, et al., 2003)
- Leg 209: Mid-Atlantic Ridge, tropical northwest Atlantic (Kelemen, Kikawa, Miller, et al., 2004)
- Expedition 308: Brazos Trinity Basin, Gulf of Mexico (Flemings et al., 2006)
- Expedition 311: Cascadia Margin gas hydrates, northeast Pacific (Riedel et al., 2006)

During Expedition 314, we employed both LWD and MWD technologies. LWD and MWD tools measure different parameters. LWD tools are formation evaluation tools used while drilling that measure formation properties with instruments located in the drill collars above the drill bit. MWD tools are also located in the drill collars and measure downhole engineering drilling parameters (e.g., WOB, torque, etc.). Another function of the MWD tool is transmitting real-time MWD data and a limited set of LWD data through drilling fluid inside the drill pipe by means of a modulated pressure wave (“mud pulsing”), which is then monitored in real time at the rig floor. Most LWD data (at least those of highest resolution and thus larger size) are recorded in memory at the downhole tool and retrieved when the tool reaches the surface. For safety monitoring purposes, the MWD tool was coupled with APWD during this expedition. MWD tools enable both APWD and MWD data to be transmitted uphole when the tools are used in conjunction, along with a subsample of the LWD data.

Site summaries

Site C0001

Site C0001 is located at the seaward edge of the Kumano Basin uplift (outer arc high), where the megasplay fault system branches and approaches the surface (Fig. F7). Drilling at this site during Expedition 314 targeted the uppermost 1000 mbsf to access the thrust sheets uplifted by several branches of the megasplay fault, as well as a thin overlying slope basin cover sequence. The principal objective was to obtain LWD logging and SWD data in this section. In addition, this was a pilot operation for later drilling at this site to 3200 mbsf to access multiple branches of the megasplay fault system during the first riser drilling program of IODP.

Operations

Because of concerns about possible unstable drilling conditions and safe running of the LWD tools with a radioactive source, pilot Hole C0001A was first drilled to a total depth (TD) of 1000 m LWD depth below seafloor (LSF) with the MWD/APWD tools only. Next a short Hole C0001B was drilled to obtain hydraulic piston coring system cores from 0 to 32 m LSF for geotechnical studies related to riser site well planning. Finally, the LWD/MWD BHA was made up with sonic, gamma ray, resistivity imaging, density and porosity, and seismic check shot tools. Hole C0001C was drilled from 0 to 78 m LSF but was terminated because of large hole inclination that developed during downtime for a rig repair and because in part to a change in current direction. Hole C0001D was spudded without retrieval of the drill string to the surface and drilled successfully from 0 to 974 m LSF (Fig. F8). Sonic, resistivity, and check shot data were successfully recovered from memory; however, the density-neutron porosity tool failed upon retrieval to the surface, and only data from 0 to 506 m LSF were successfully retrieved after recovery attempts at Shekou base (China). Logging data quality is generally good, and image logs in particular are of high quality. The sonic log suffers from slow formation velocity and poor data in a zone of enlarged and sticky hole conditions.

Log characterization and lithologic interpretation

Three logging units and eight logging subunits were defined based on data from Hole C0001D (Fig. F9). Logging Unit I (0–198.9 m LSF) is characterized by gradually increasing resistivity and decameter-scale gamma ray cycles. It is interpreted as slope basin sediments composed of silt turbidites and mud. No clear sedimentary features could be recognized in the images. Logging Subunit IB (190.5–198.9 m LSF) is thought

to represent an unconformity at the base of the slope sediments and is characterized by positive peaks in the resistivity logs and a broad negative peak in the gamma ray log, suggesting washout of a possible sandy/silty layer. Logging Unit II (198.9–529.1 m LSF) exhibits higher gamma ray and resistivity baselines, suggesting an increase in clay content. The near-continuous breakouts suggest this unit is composed of relatively homogeneous hemipelagic mud and silt turbidites. Logging Unit III (529.1–976 m LSF) shows distinct differences from logging Units I and II. The gamma radiation, resistivity, and velocities are all increased. This unit also contains highly fractured resistive zones and few to no breakouts. Both logging Units II and III are interpreted as accretionary prism sediments.

Physical properties

All LWD resistivity logs show a general downhole increasing trend. A comparison shows that the ring resistivity is systematically higher than the bit resistivity. The profile of resistivity presents a net downward decreasing step at the 200 m LSF logging Unit I/II boundary and two significant zones of lower resistivity values at 529–628 m LSF in a disrupted zone (see below) and at 815–855 m LSF (Fig. F9). The sonic *P*-wave velocity generally increases with depth. The gradients of velocity with depth are 0.757, 0.976, and 1.793 m/s per meter for logging Units I, II, and III, respectively. The 200 m LSF logging Unit I/II boundary is characterized by relatively low velocities. Five major low-velocity zones (529–600, 660–695, 773–827, 884–894, and 915–965 m) depart from the increasing trend of velocity in logging Unit III, the first zone corresponding to the same disrupted zone.

Because the adnVISION tool failed, the real-time monitoring density (RHOB) and porosity (TNPH) data could only be retrieved from the uppermost 506 m LSF. Those data suffer from large scattering. Real-time density generally increases with depth. At the 200 m LSF logging Unit I/II boundary the log shows a sudden drop of value. Below this boundary the density log gradually increases, with the notable exception of the 470–490 m zone, where the density values decrease. The neutron porosity curve shows the opposite trend and the same anomalous zone. Porosity estimation from the resistivity data was calibrated using the data from Sites 808 and 1173 of ODP Leg 196 at the Muroto transect (Taira et al., 1991; Moore et al., 2001). Its profile presents a net increasing step at 200 m LSF and two zones of increased porosity departing from the general decreasing trend (468–633 and 810–910 m LSF). That resistivity-derived porosity fits only with the lowest values of density-derived porosity calculated from the RHOB log. Crossplots show good correlation between velocity and resistivity-derived porosity, and velocity and resistivity-derived density.

Structural geology and geomechanics

Resistivity images provide constraints on the structural development and stress orientations at Site C0001. Breakouts and associated tensile fractures are a striking feature of the upper half of the borehole and indicate a maximum horizontal stress orientation of 335° (Fig. F9). This horizontal stress is more northerly than both the Philippine Sea–Japan plate convergence vector and the geodetically determined shortening direction on the Kii Peninsula. The maximum horizontal stress is nearly perpendicular to the trend of the accretionary prism and major faults and is consistent with prism-normal shortening. The difference between the maximum horizontal stress at Site C0001 and the orientation of local plate convergence suggests oblique convergence or right lateral strike-slip faulting elsewhere in the forearc region.

Bedding and fracture orientations are consistent with deformation around an axis parallel to the trend of the accretionary prism. That is, poles to bedding form a girdle trending north-northwest. Fractures are more complex with shallower orientations having northwest and southeast dips. A set of near-vertical conductive natural fractures trend north-northwest, are cut by younger normal faults, and may have been dilated by drilling operations, as inferred from the observation of wide conductive zones. Bedding dips are locally steeper at the contact between the slope deposits and the accretionary prism, but faulting is not evident at this apparent unconformity.

A zone of difficult drilling from 529 to 629 m LSF shows patterns of bedding disruption typical of fault zones. Increasing consolidation across this zone of disruption may be interpreted as resulting from normal faulting; however, nontypical geometries of thrust faulting are also consistent with this consolidation state.

Log-seismic correlation

Logging Unit I corresponds to the hemipelagic slope sediments between the seafloor and ~200 m seismic depth below seafloor (SSF) (Figs. F7, F9). Logging Subunit IB corresponds to a thin low-amplitude reflection overlying the strong positive reflection at 200 m SSF that defines the base of logging Unit I. Logging Unit II corresponds to a zone of southeast-dipping, generally low amplitude reflections. Reflections intersect the borehole at the logging Subunit IIA/IIB and IIB/IIC boundaries, but there is no change in the general character of the seismic data across these reflections. The boundary between logging Units II and III correlates with a change in reflectivity from relatively low amplitude above to relatively high amplitude below the boundary. Logging Subunit IIIA corresponds to a series of high-amplitude, laterally contin-

uous reflections that appear on the southeast side of the borehole and are cut off by the inferred fault that intersects the borehole at the base of this subunit.

Check shot data to 635 m LSF provided good constraint on the long wavelength velocity depth conversion. These data demonstrated that the prestack depth-migrated (PSDM) velocity model at the site was quite good. We found it difficult to reconcile the strong reflection at the boundary between the slope basin section and the accretionary wedge below with the log observations in the hole. Synthetic seismograms of this interval fail to reproduce the strong reflection because of the lack, in the logs, of an abrupt increase in acoustic impedance just above the boundary.

In summary, a 976 m interval made up of apparently strongly deformed mudstones with some silty to sandy turbiditic sediments was drilled and logged at Site C0001. This section is the thrust sheet of one main branch of the megasplay fault system, plus the overlying ~200 m of slope basin deposits. Logging and vertical seismic data provide the first information on the physical properties, lithology, structure, and state of stress in this key element of the Nankai subduction system.

Site C0002

Site C0002 is located at the Kumano forearc basin off the Kii Peninsula (Fig. **F10**). The goal of drilling at this site was to log the ~1000 m thick Kumano forearc basin section and several hundred meters of the underlying formations, interpreted as older rocks of the accretionary prism and/or early slope basin sediments deposited prior to the development of the megasplay fault. This site also is slated for deep riser drilling across the entire plate boundary system to >5500 mbsf during NanTroSEIZE Stage 3. We were able to drill and log the entire section from 0 to 1401 mbsf with complete success. An excellent suite of logs and seismic VSP data reveals the structure of the forearc basin, gas hydrate-bearing zone, and the underlying deformed rocks of the inner accretionary prism.

Operations

Because of the strong Kuroshio Current, the ship was moved upcurrent, then drifted to the location of Site C0002 while running the LWD BHA. After tagging the seafloor with the LWD/MWD assembly at 1964.5 m drillers depth below rig floor (DRF) (1936 meters below sea level [mbsl]), Hole C0002A was jetted to 70.5 m LSF, then rotary drilling commenced and proceeded smoothly. Drilling continued to TD of 1401.5 m LSF (3366 m DRF) at 0600 h on 17 October 2007 without any significant difficulties.

The hole was displaced with kill mud and two joints of pipe were removed to create an 18 m offset in the position of pipe connections for filling in the check shot data during the pipe trip out. All memory data were successfully downloaded. The seismicVISION data had to be sent to land base for preprocessing because of battery failure before retrieval of the tool, but data were uploaded to the ship within a few days. In spite of several major washouts (standoff > 2 inch) in sand-rich intervals, logging data quality is generally good, and image logs in particular are of high quality. These logs provide a very rich data set for interpretation of the geology and stress conditions at this site.

Log characterization and lithologic interpretation

Four logging units were defined based on the trends and character in the full suite of LWD log responses (Fig. F11). Each of the logging units are bounded by dip discontinuities interpreted as angular unconformities. There is also an angular unconformity within logging Unit III but not a sufficient change in log character to require division of the logging unit. Overall logging Unit I is interpreted to be slope basin deposits. Logging Units II and III are interpreted as thick basin fill dominated by repeating turbidite deposits, as seen clearly on the log responses, particularly the gamma ray log. Within logging Unit II are two zones of particular interest defined by changes in the log responses. Zone A (218.1–400.4 m LSF) is interpreted as a gas hydrate-bearing zone based on the resistivity profiles, with the gas hydrates concentrated in the sandy horizons of the turbidite deposits. Zone B (481.6–547.1 m LSF) is interpreted as a potential gas-bearing interval, again within the sandy horizons of the turbidite deposits. The presence of gas is based on the sonic log response across the zone. Logging Unit III is a homogeneous clay-rich interval of mudstone, immediately overlying the top of the older accretionary prism section that forms basement to the basin at 936 m LSF. Logging Unit IV, from 936 to 1401 m, corresponds with the accretionary prism imaged on the seismic profiles, with a distinct change to much more variable responses in virtually all of the logs.

Physical properties

Physical properties in Hole C0002A show very different behaviors for different lithologies, which are classified based not only on the main logging units (slope sediment units and underlying prism) but also on different stratigraphic zones identified. Almost all physical properties are relatively well determined in the slope sediments, whereas they exhibit wide ranges of scatter in the underlying prism section, probably a result of severe borehole instabilities. However, properties not sensitive to hole con-

dition (e.g., bit and deep resistivity) suggest that the accretionary prism is denser and more compacted compared to the forearc basin (Fig. F11). The lower part of the forearc basin below 400 m LSF at the BSR is characterized by physical properties that suggest a relative undercompaction: slightly decreasing or nearly constant resistivity with depth while velocity increase is insignificant, and changes in density and porosity are relatively limited. This implies a possibility of some level of overpressure in this zone. Above the BSR (Zone A), a signature of gas hydrate is indicated by a strongly increasing overall resistivity trend with depth, with numerous local spikes of high resistivity, while changes in neutron porosity and density are minor. The gas hydrate-bearing formations are characterized by a unique velocity and resistivity relation because of a significant increase in resistivity but a muted increase in velocity with depth.

Structural geology and geomechanics

Structure is distinct between the forearc basin and underlying accretionary prism at Site C0002 (Fig. F11). However, the orientations of bedding planes and borehole breakouts are consistent (northeast–southwest and northwest–southeast, respectively) throughout the entire borehole. Bedding dips are shallow ($<10^{\circ}$ – 15°) in the forearc basin with some variation in dip direction with depth, which agrees well with seismic reflection data. Dips increase toward and within logging Unit IV ($\sim 30^{\circ}$ – 60°), the older accretionary prism. Natural fractures are rarer than at Site C0001 and have scattered orientations within the basin but have a more consistent northeast–southwest trend within the prism. All fractures dip between 30° and 85° with no significant difference between basin and prism. Basin fractures have three dominant trends: northeast–southwest, east–west, and northwest–southeast. All three orientations can be identified in seismic data. A few basin fractures offset bedding in a normal sense, consistent with the seismic-scale normal faulting. Resistivity of the fractures varies but includes several wide aperture (10–30 cm) and highly resistive (mineralized or cemented) fractures in the prism. Logging Unit III, at the basin–prism transition, is characterized by increasing bedding dips and a fractured base. Borehole breakouts indicate a northeast–southwest oriented S_{Hmax} , perpendicular to that at Site C0001. Breakout azimuth gradually rotates clockwise with depth and breakout width increases in the prism relative to the basin. Stress magnitude determined from breakout width is consistent with normal faulting in the basin, as observed, but more ambiguous, in the prism. Fracture and fault orientations, breakouts, and state of stress collectively support margin-normal extension of this part of the forearc. We suggest this is driven by uplift of the megasplay/outer-arc high causing gravitationally driven extension of the

inner wedge. This contrasts with Site C0001 in the active prism (outer wedge), where convergence-related compression dominates.

Log-seismic correlation

The portion of the Kumano Basin drilled at Site C0002 includes a series of unconformity-bounded sequences. The shallowest is seismic Unit 2/3/4 undifferentiated, which correlates closely with logging Unit I (Figs. **F10**, **F11**). The increase in velocity across this boundary is consistent with a transition from higher porosity hemipelagic sediments to older more compacted Kumano Basin stratigraphy. Seismic Units 5 through uppermost seismic Unit 11 correspond with logging Unit II.

Within logging Unit II there are two zones of interest. Zone A lies above the BSR (~404 m LSF) and shows elevated resistivity and slightly increased velocities. Velocity and density decrease at the BSR, suggesting that the reflection may be generated by the presence of free gas below, rather than by gas hydrate above. At the top of Zone B, a strong, dipping negative polarity reflection within the seismic data correlates with a second region of low velocities. The regional observation that some reflectors brighten in amplitude as they approach the BSR from below, coupled with interpreted sandy turbidite layers based on gamma ray logs of Zone B, supports the suggestion that this reflection may represent sands bearing at least small amounts of free gas.

The top of the accretionary prism is a high-amplitude reflection and a clear boundary in all of the logs. A sequence of low gamma ray values just below the top of the prism suggest that a sandier interval may contribute to this bright reflection.

A complete check shot profile of 72 shots defined a clear velocity profile for the Kumano Basin stratigraphy and drilled portion of the accretionary prism. This curve generally agrees well with the sonic log, with the exception of slightly lower velocities from 550 to 675 m LSF and agrees very well with the PSDM velocities.

Site C0003

Site C0003 is located in the midslope region and targeted a major thrust fault of the megasplay fault system, as well as the overlying thrust sheet and underlying footwall to the thrust (Fig. **F12**). Drilling at this site was to begin the downdip transect of the megasplay fault system by sampling a relatively shallow, presumably aseismogenic point on the fault zone at ~800 mbsf. The objectives of taking logging data from this site were to characterize the material properties, deformational features, and condi-

tions in the fault zones, wall rocks, and sediments. Unfortunately, poor drilling conditions in the highly unstable thrust sheet only permitted us to penetrate to 525.5 m LSF at this site before the drill string became irretrievably stuck and the BHA was lost in the hole and ultimately cemented in place. The MWD-transmitted real-time data from the LWD tools is the only available scientific data set from this site. Fortunately, these real-time data are of sufficient quality that we were still able to obtain a great deal of useful information from the interval 0–525.5 m LSF.

Operations

Hole C0003A was spudded at 1300 h on 20 October 2007. The LWD/MWD drilling/logging operations were conducted from the seafloor (2481.5 m DRF) to a TD of 3007 m DRF (525.5 m LSF), where the drill pipe became stuck and the BHA became separated from the string because of accidental disconnection between two drill collars. In spite of numerous efforts to recover the bottom part of the BHA (including all of the MWD-APWD-LWD tools), the fishing operation was not successful and the hole was cemented on 30 October, leaving behind the tools and 19 drill collars. Because the LWD-MWD-APWD tools were not recovered, the available data set is limited to the MWD-APWD and a limited set of LWD data transmitted in real time, including density, porosity, ultrasonic caliper, natural gamma radiation, and sonic velocity. Except for the depth interval 75–155 m LSF, characterized by major washouts (sand-rich interval), and 390–460 m LSF, characterized by a complex washout and bridge pattern, hole conditions are good. Scalar logging data quality is generally good. Some of the automatically picked sonic compressional arrival times and coherence show a surprisingly good fit with the interval velocity data derived from the real-time check shot data.

Log characterization and lithologic interpretation

Three broad units were defined for the interval of relatively good quality real-time data available (~55–509 m LSF). Logging Unit I (55–76.6 m LSF) is interpreted as muddy to sandy slope basin sediments, exhibiting moderately high gamma ray baseline values and fairly constant resistivity values (Fig. F13). Logging Unit II (76.6–151.5 m LSF) is characterized by a large degree of hole washout and low gamma ray values. This suggests a formation dominated by unconsolidated and porous sandy beds. Based on seismic reflection data, it is interpreted as a deformed part of the thrust sheet. Logging Unit III (151.5–509 m LSF) exhibits a broad increasing gamma ray trend with fairly consistent resistivity and density values. Logging Unit III contains several zones of apparent deformation characterized by changes in the resistivity and

density. Overall, logging Unit III is interpreted as clay-rich sediments showing no significant compaction trend with depth, as part of the thrust sheet of the megasplay fault branch.

Physical properties

In Hole C0003, some physical properties appear to be significantly affected by hole conditions. For example, where severe washouts were detected, density decreased and neutron porosity increased dramatically; therefore, these measurements are not reliable (Fig. F13). Even ring resistivity is affected in logging Unit II; however, bit resistivity seems to remain unaffected. In the major washout zone between ~400 and ~450 m LSF, density and porosity (both neutron and density-derived porosity) are significantly affected by hole conditions, but no notable decrease in resistivity was found. This could be explained by worsening hole conditions between the resistivity and density/porosity measurements; the latter occur later because of the position of the tools in the BHA. The zone is more likely to correspond to clay-rich material. The high importance of the washouts may suggest that the material was already damaged.

Structural geology and geomechanics

Because of the lack of image data and the poor quality of the density and sonic logs (Fig. F13), we derived structural interpretations from the caliper, gamma ray, and resistivity logs. A number of washouts (high-caliper intervals) occur in logging Unit III. Because the gamma ray and resistivity logs do not decrease through these intervals they probably represent poorly consolidated argillaceous material, or most likely, fault gouge. Three prominent washout zones occur between 416 and 451 m LSF, with several others within tens of meters above and below this interval. This area of the borehole also corresponds to bright tilted reflectors, further strengthening the interpretation of these washout zones as faults within the hanging wall thrust sheet of the major fault that was the target of drilling.

Log-seismic correlation

Logging Unit I corresponds to the slope basin, and the logging Unit I/II contact is likely the positive polarity reflection separating the base of the slope basin and top of the wedge-shaped upper thrust sheet sequence (Figs. F12, F13). The logging Unit II/III contact is the negative polarity reflection at the base of the wedge-shaped sequence. Logging Unit III spans the low-reflectivity sequence including the fault zone to the total depth of 525.5 m LSF. The reflection separating the slope basin sediments from the wedge-shaped sequence is positive polarity; however, the density log de-

creases sharply across this boundary. We suggest washouts in sandy Unit II decreased the density values measured in this unit. The combination of a sand-rich Unit II with higher densities and a low-density interval ~3 m below the base of the Unit II/III boundary may explain the negative polarity reflection. Fault-related reflections in logging Unit III can be attributed to washout zones or damaged zone associated with the faults.

We used real-time check shot data from 10 stations ranging in depth from 86 to 506 m LSF. The first arrival waveforms from these stations are of high quality. The data were used to obtain long wavelength interval velocities in the hole and to correct the PSDM seismic section. Because good-quality *P*-wave velocity data are not available, we calculated synthetic seismograms using interval velocities from check shot data and real-time density data. The density data used for the synthetic seismogram are modified in logging Unit II because of the low reliability in this interval. The synthetic seismogram can be basically correlated with the major features of PSDM seismic section, but we cannot exactly fit the synthetic seismogram to the PSDM section in some intervals, probably because of the low overall quality of the limited data set available for this purpose.

When the broken section of drill pipe was recovered to the rig floor, it was plugged with cuttings and numerous large blocks (as large as 5–8 cm in diameter) of cavings that had come from an unknown position in the hole. This material had a nannofossil age of late Miocene (5.5–7.2 Ma). It is remarkably well indurated for material from <530 mbsf. This is consistent with the thrust sheet having been uplifted from older parts of the accretionary complex.

In summary, the portion of the thrust sheet penetrated at Site C0003 was a largely homogeneous material, most likely silty to clayey hemipelagic muds and turbidites and clearly heavily deformed by multiple faults and associated brittle fractures.

Site C0004

As an alternative to Site C0003, which was unsuccessful in reaching the megasplay primary target, Site C0004 (proposed Site NT2-01I) was drilled at a location where the megasplay is only at ~280 mbsf (Figs. **F14**, **F15**). To test drilling conditions prior to risking the LWD/MWD tool string, Hole C0004A was drilled without any of the LWD/MWD tools to the planned TD of 400 mbsf, and then Hole C0004B was drilled with the full LWD tool string except adnVISION (neutron porosity/density). The drilling

was smooth and reached TD quickly, and data quality was good, particularly for sonic velocity.

Operations

Hole C0004A (pilot hole) was spudded at 0445 h on 1 November 2007 and jetted down from the seafloor to 75.5 m LSF before starting rotary drilling. Without any drilling problems, the hole reached the 400 m TD at 1845 h. The drill string was made up in preparation for LWD-MWD-APWD drilling in Hole C0004B from 0515 h to 0800 h on 2 November. As with the previous site, the BHA was made up with resistivity imaging, sonic, power pulse-annular pressure, seismic, and Azimuthal Density Neutron (ADN) tools, but this time the ADN tool did not include a radioactive source and thus provided only ultrasonic caliper and not density/porosity measurements (Fig. F16). Drilling progressed with an average rate of penetration (ROP) of ~35 m/h to TD (400 m LSF; 3066 m DRF) at 1230 h on 3 November without any cause for concern. All LWD tools were recovered on the rig floor at 1800 h on 3 November, and all memory data were successfully downloaded. Hole conditions were generally poor but had little impact on overall data quality. Logging data quality is good, even for the sonic data. Because of the high ROP, resistivity image logs show some pixel effects that are easily removed by filtering and postprocessing. No localized depth shifts have been observed for Hole C0004B.

Log characterization and lithologic interpretation

Three logging units were defined based on the different trends and character of the LWD log responses (Fig. F16). Logging Unit I (0–67.9 m LSF) is characterized by variable gamma radiation and low resistivity and is interpreted as slope basin deposits. Logging Unit II (67.9–323.8 m LSF) was defined for the thrust sheet and associated complexes and divided into four subunits. Logging Subunit IIA is characterized by increasing gamma radiation, increasing resistivity baselines, and increasing velocity and is interpreted as a chaotic or deformed sediments, possibly gravitational in origin. Logging Subunit IIB is characterized by continuous high-frequency fluctuation in gamma radiation, constant resistivity baseline, and increasing velocity. Logging Subunit IIC is characterized by cyclic changes in gamma radiation, variable resistivity, and again increasing velocity. Logging Subunit IID is characterized by decreasing gamma radiation and repeated intervals of decreasing resistivity and velocity. The upper part of this subunit is strongly deformed and the lower part is weakly deformed. The base of logging Unit II is interpreted as a weakly localized deformation zone. Logging Unit III (323.8 m LSF to TD) is characterized by decreasing gamma radiation,

variable resistivity, and relatively constant sonic velocity and is interpreted as sediments underthrust beneath the splay fault.

Physical properties

Given the lack of a neutron log, porosity and density were estimated using five different resistivity logs (ring; bit; and deep, medium, and shallow button) and the sonic velocity obtained from the traveltime (DTCO) measurements (Fig. F16). No radioactive source was used at Site C0004, and accordingly neither the neutron porosity (TNPH) nor the bulk density (RHOB) logs were available. The analyzed physical properties were compared with identified fracture zones (see “**Structural geology and geomechanics**”). The shallow button resistivity is significantly lower than the other two button readings, most likely a sign of enlarged hole conditions. Porosity, calculated from bit and ring resistivity corrected with the estimated temperature profile, shows a slowly decreasing trend with depth below the older prism. There appears to be some weak relationship between porosity changes and fracture zones. High ring resistivity porosity seems to coincide more clearly with such intervals, even if the relation is not systematic. The sonic *P*-wave velocity log is of good quality and its response appears to reflect well the effects of fracture zones and logging units, identifiable as low-velocity zones.

Structural geology and geomechanics

Three structural domains were defined by structural characteristics, including fractures, breakouts, and texture in the borehole images. Structural Domain 1 (0–96 m LSF) is characterized by a lack of fractures, weak breakouts, and little variation in the sediments (Fig. F16). Structural Domain 2 (96–292 m LSF) includes heavily or moderately fractured conductive zones and intensive borehole breakouts. Structural Domain 3 (292–396 m LSF) has few fractures and narrower breakouts relative to the underlying domains. Bedding planes in structural Domain 1 are consistent and mostly strike northeast–southwest and dip 30°–40° to the south. The beds in structural Domain 2 are more scattered both in dip and azimuth but generally trend northeast–southwest and dip at 20°–70° to the north. Structural Domain 3 shows similar bed trend to Domain 2 (northeast–southwest) but the dips are generally gentler to the north. Most fractures we identified are conductive and only found in Domains 2 and 3. Fractures in structural Domain 2 are scattered both in trend and dip but with a dominant trend of northeast–southwest, steeply dipping to the north. Fractures in structural Domain 3 show northeast–southwest trend and gentler dip (10°–20°) to the north. Fractured zones were defined by intense development of fractures and wide

conductive breakouts and were classified as “major” or “minor.” In structural Domain 2, three major fractured zones and four minor fractured zones are identified, whereas structural Domain 3 includes a minor fractured zone.

Borehole breakouts indicate a consistent northeast–southwest orientated S_{Hmax} throughout the borehole, which is between the S_{Hmax} direction at Site C0001 and the convergence direction. Breakout width is narrow in Domain 1 and wide in Domain 2, then slightly reduced again in Domain 3. Stress magnitude was analyzed from breakout widths, but stress regime is unclear because of uncertainty in rock strength. Domain 1 consists of logging Units I and IIA, which could be interpreted as two sedimentation stages of slope deposits because of small changes in physical properties. Deformation characteristics at the boundary of structural Domains 2 and 3 suggest a narrow (few meters) transition zone between the hanging wall and footwall of the main thrust. The structural features identified in the borehole images, bedding, and fractured zones are well correlated with the structural style in the reflection seismic profiles and are compatible with convergence related deformation.

Log-seismic correlation

The base of the slope sediment section corresponds to the logging Unit I/II boundary (Figs. F14, F16). The sonic velocity increases at the boundary from little more than drilling fluid velocity to about 1600 m/s. There are similar increases in the gamma ray and resistivity logs. The transition in each of the logs is gradual rather than abrupt. These gradual changes likely account for the relatively low frequency character of the reflection at the base of the slope basin sediments.

Logging Subunit IID corresponds to a thick zone of roughly parallel northwest-dipping reflections interpreted as the signature of a system of faults along which accretionary prism rocks have been thrust over slope basin sediments. The seismic reflections on both the inline and cross-line adjacent to the hole show considerable variation on a scale of 50–100 m. Thus, it is not reasonable to expect an exact correlation between log values in a single hole and the seismic data that smear the image laterally on a scale of 20–40 m.

The velocity in the upper half of the dipping reflection package decreases from ~1900 to ~1800 m/s over the range from 243 to 291 m LSF. The sonic log begins a significant increase in interval velocity, from ~1900 to 2100 m/s at 291 m LSF. Velocity remains high to ~313 m LSF before dropping back to ~2000 m/s. This high velocity corresponds to the base of the broad trough and the top of the basal peak of the dipping

reflection section. There is a thin layer with dramatically lower velocity at ~306 m LSF that is within the basal bright peak of the dipping sequence. The nearly flat horizons below have velocities varying between 2000 and 2100 m/s and form a series of bright peaks and troughs.

Usable check shot data were acquired at 21 depths in Hole C0004B that provided reasonable velocity information. Beyond the general increase of interval velocity from 1500 m/s at the seafloor to 2100 m/s at 400 m, there is not an exact match between the check shot velocity curve and the sonic log values.

Site C0005

Site C0005 was drilled without any logging tools. No measurements were made after failure to reach TD in the pilot hole at proposed Site NT2-01E because of hole condition and the short time to drill at proposed Site NT2-01G because of ROV problems at the beginning of drilling (Fig. F15).

Site C0006

Site C0006 is located at the frontal thrust of the Nankai accretionary prism near the trench axis, and drilling targeted the main frontal thrust at ~ 700 mbsf, as well as subsidiary faults and deformed sediments above that zone and a footwall zone of strong reflectors likely caused by coarse turbiditic trench fill sediments (Fig. F17). The overall objectives of drilling this site with LWD/MWD instruments were to characterize the lithology, deformation, stress state, and physical properties of the wall rocks and the frontal thrust fault zone. Pilot Hole C0006A was drilled with MWD-APWD and gamma ray tool string to TD of 885.5 m LSF, and Hole C0006B was drilled to the same TD with the full LWD tool string, but without any radioactive source in the adnVISION tool. Because the water depth was beyond ROV limit of 3000 mbsl, both holes were drilled without ROV monitoring. Drilling was smooth; however, the real-time MWD communication was lost at a depth of 274 mbsf, as well as the power from the MWD turbine. The LWD tools recorded data in memory mode on battery power; however, the sonic source transducers were negatively affected and sonic data were of very poor to unusable quality from 274 m LSF to TD (885.5 m LSF).

Operations

The *Chikyu* moved to proposed Site NT1-03B and set beacons with the ROV at 0415 h on 8 November 2008. Deploying five beacons took ~17 h and finished at 2300 h,

followed by a few hours to calibrate their positions. The *Chikyu* moved upcurrent by 5 nmi at 0000 h on 9 November and began running into the hole with the MWD assembly while drifting from 0400 h. The running of the drill string continued from 0600 h while every connection was checked for loosening caused by the strong vibration during drilling of the previous hole. The drill string began running in at a ROP of 100 m/h and pump rate of 85 rpm. With no ROV monitoring, Hole C0006A was spudded at 0015 h on 10 November (3903.5 m DRF). The hole was drilled to 4210 m DRF and swept with Hi-Vis gel and spotted with heavy mud at bottom at 1400 h on 10 November. A short wiper trip was made from 4210 to 4060 m DRF between 1415 and 1530 h. Drilling was continued to 4371 m DRF and hole was again swept with Hi-Vis gel and spotted with heavy mud before making another short trip at 0500 h on 11 November. Drilling was continued after a short trip between 4503 and 4358 m DRF, then a lube-oil gear was tightened which had shaken loose as a result of heavy vibration. The target depth of 885.5 mbsf was finally reached at 2045 h on 11 November. After sweeping Hi-Vis gel and spotting kill mud, the MWD BHA was pulled out the hole from 2045 h. Rig floor instruments were checked and tightened again because of the heavy current-induced vibration.

After pulling out the MWD tool string, the ship was moved 2 nmi upcurrent. An LWD tool assembly was made up as at the previous sites (full string without the radioactive source for the adnVISION) at 1115 h on 12 November, and running into the hole began while the ship was drifting back on site. The top drive system was connected at 3854 m DRF and run in with circulation. At 0045 h on 13 November, seabed was confirmed at 3900 m DRF, and Hole C0006B was spudded and jetted down to 40 m, then rotary drilling began. Drilling continued to 4174 m DRF when a pressure drop was noted, apparently caused by the failure of the mud turbine vanes in the PowerPulse MWD tool. This was accompanied by loss of communication from the MWD tool at 1400 h on 13 November. After several attempts to recover data transmission failed, drilling continued to 4502 m DRF without real-time data transmission. Prior to a wiper trip between 4502 and 4350 m DRF, the hole was swept with Hi-Vis gel and spotted with heavy mud at 0315 h on 14 November. Drilling finally reached the 885.5 m LSF TD at 1645 h. The drill string was pulled out of the hole to 3836 m DRF, the top drive made up, and the string was displaced with seawater.

All memory data were successfully downloaded immediately after the LWD tools were pulled out of the hole, and the data quality is good for the whole section except for the sonic data, which is good to 155 m LSF only. The presumed cause of this loss of data quality is that the sonicVISION was running on battery power only, which could

not provide enough energy for the transmitters to operate at full strength. Hence the sonicVISION did not record good quality data from the formation for the depth range from 155 mbsf to the TD.

Log characterization and lithologic interpretation

Four logging units were defined based on the different trends and character of the LWD log responses (Fig. F18). Logging Unit I (0–197.8 m LSF) is characterized by variable gamma radiation and high-amplitude fluctuation of resistivity and is interpreted as sandy and muddy deposits. Logging Unit II (197.8–428.3 m LSF) is characterized by a gradually increasing trend in the gamma radiation with occasional thick (5 m) low-gamma layers. This unit is interpreted as mudstone with thick sandstone beds. Possible repeated stratigraphic sections are recognized in this logging unit. Logging Unit III (428.3–711.5 m LSF) was defined based on inferred alternating beds of mudstone and sandstone and divided into two logging subunits. Logging Subunit IIIA is characterized by high gamma radiation with thin (1 m) low gamma radiation layers. Logging Subunit IIIB is characterized by high gamma radiation with a large number of thin (1 m) low gamma radiation layers and repeated increasing trends in resistivity. The base of logging Unit III is interpreted as a fault zone as well as a distinct lithologic boundary. Logging Unit IV (711.5 m LSF to TD) is characterized by low gamma radiation and resistivity and interpreted as abundant sandstones.

Physical properties

Porosity and density were estimated using five different resistivity logs (ring; bit; and deep, medium, and shallow button) and the sonic velocity obtained from the DTCO measurements (Fig. F18). No radioactive source was used in Site C0006, and accordingly neither the TNPH nor RHOB logs were available. The deep and medium button resistivity logs show very good agreement. The shallow button resistivity is significantly lower than the other two button logs in logging Units I and IV. Porosity, calculated from bit and ring resistivity using the estimated temperature profile, shows a slowly decreasing trend with depth from 0 to ~650 m LSF and shows increasing trend with depth below 650 m LSF. Because of the malfunction of the sonic tool, *P*-wave velocity data were measured only to ~160 m LSF. Velocity appears to be nearly constant or slightly increasing over this shallow interval. Velocity and resistivity are generally in good agreement, and high velocity zones correspond to high resistivity zones.

Structural geology and geomechanics

Good quality borehole resistivity images provide information on orientation of bedding, fractures, and breakouts at Site C0006 (Fig. F18). Bedding dips are shallow to moderate with most dips $<30^\circ$. The mean bedding dip is west–northwest with a strong clustering of easterly dips above 200 m LSF and more northerly dips near the base of the hole. Overall, the deeper bedding dip orientations are consistent with north–northwesterly directed shortening. Fractures at Site C0006 are notable in not being as focused or concentrated into zones as at other Expedition 314 sites. Fractures show diverse orientations, striking mostly northwest–southeast in the upper two lithologic units (above 428 m LSF). Fractures in the deeper two lithologic units (429–853 m LSF) strike dominantly northeast and southwest, dipping both northwest and southeast. Overall fracture orientation at depths below 429 m LSF is consistent with northwesterly directed shortening.

Borehole breakouts occur from 188 to 729 m LSF but are in general much more weakly developed than at other sites drilled during this expedition. Breakouts are not readily discernible at greater depths. This lack of obvious breakouts (below 729 m LSF) occurs just below the transition to lithologic Unit IV, which is dominated by sand or sandstone. Breakouts show a mean S_{Hmax} orientation of 330° , consistent with that observed at Sites C0001 and C0004 but divergent from the S_{Hmax} expected from the far-field convergence direction of the Philippine Sea plate and Japan.

Log characterization and lithologic interpretation

The logging units do not correlate well with the seismic reflection data, probably because the section is strongly faulted. Several faults that intersect the well location are visible in the seismic data (Fig. F18). Several features in the LWD logs do, however, correlate with features on the seismic data. For example, the sandy layers (low gamma radiation and resistivity) at ~220, 240, 300, and 335 m LSF correlate with strong reflections and appear to be parts of the same unit that have been repeated as a result of thrusting (Fig. F18). Several seismically defined thrust faults also correlate with features in the resistivity images, such as the conductive fractures at 360 and 381 m LSF. The basal décollement correlates with a fracture at 657 m LSF.

Summary and implications

Together with coring during Expeditions 315 and 316, the objectives of Expedition 314 were to drill a transect of riserless sites that would characterize the lithologies, physical and mechanical properties, structures, and stress conditions in the sediments at relatively shallow depths below seafloor on the Nankai margin and establish the riserless “top-hole” conditions and properties at the two sites slated for deep riser drilling in later stages of the NanTroSEIZE program. Our specific goal on Expedition 314 was to obtain the maximum possible in situ data by logging in dedicated LWD holes, with Expeditions 315 and 316 slated to core twinned holes at each of the sites we logged. Our targets were the accretionary prism and faults therein and the major forearc basin overlying the hypothesized seismogenic zone. To this end, we drilled and logged (see Fig. F6; Table T1) from 0 to 885.5 mbsf at the frontal thrust site at the toe of the entire accretionary prism (Site C0006), 0 to 400 mbsf across the out-of-sequence megasplay fault system (Site C0004), 0 to 1000 mbsf into the thrust sheet above the megasplay in a pilot hole for future riser drilling (Site C0001) and 0 to 532 mbsf in a second site in that thrust sheet (Site C0003), and 0 to 1401 mbsf in a site crossing 976 m of the Kumano forearc basin and 425 m of the underlying older accretionary prism rocks (Site C0002), completing the pilot hole for the second future riser drilling effort.

At these sites, we conducted an extensive suite of LWD logging, including gamma radiation, resistivity imaging, sonic velocity, neutron porosity, lithodensity, and check shot seismic. This body of data is collectively the most advanced LWD data collected in scientific ocean drilling to date and is also the largest number of meters logged with LWD during a single expedition in IODP or ODP. Hole C0002B is the deepest penetration into an accretionary prism and is the deepest LWD hole ever in scientific ocean drilling. Not all sites have all logs available. In some cases equipment malfunctions caused loss of some logging data (e.g., sonic log at Site C0006), and after the loss of the LWD BHA at Site C0003, we were unable to record porosity or density data at the subsequent sites because of the lack of a radioactive source.

Key results

Lithology and structure of faults and thrust sheets

As expected, we found that logs are consistent in showing sediments dominated by hemipelagic muds/mudstones and turbidites, with relatively little sand except at the trench site (C0006) and in the slope basin deposits (Fig. F19). In the absence of cores,

our main tool for structural analysis of deformed zones, fractures and faults, bedding attitude, and borehole stress was the resistivity imaging. We documented bedding attitudes consistent with the seismic interpretation of structural domains: relatively shallow bedding in basinal settings with well-imaged, continuous reflectors and more variable and steeper dips in areas imaged as strongly deformed thrust sheets, accretionary mélangé, and apparent fault zones. The thrust sheet drilled in the hanging wall of the megasplay fault at Sites C0001 and C0004 is a strongly deformed zone and has bedding attitudes clearly differentiated from the slope basin sediments that overlie and also the strata that underthrust the fault. Similarly, the Kumano forearc basin section at Site C0002 exhibits gentle dip, in close agreement with the seismic reflection interpretations, whereas the underlying “basement,” interpreted as older accreted sedimentary rocks, shows highly variable bedding orientation. Rocks of that underlying prism and of the thrust sheet below 500 m LSF at Site C0001 are anomalously dense with high sonic/seismic velocity for their burial depth, indicating more advanced lithification. In the case of Sites C0001 and C0004, this suggests significant uplift along the splay thrust, though that hypothesis must be confirmed with core data. At Site C0006, the frontal thrust region, the bedding is less variable in general, in agreement with the incipient nature of the deformation at this site, and dips are generally shallow. Physical properties are consistent with shallowly buried sediments that have been only weakly lithified at this site.

Borehole breakouts and stress

Borehole breakouts were observed at all four sites for which we have imaging data and show very systematic orientations (see below). In a vertical borehole, the orientation of breakouts is a well-established indicator of the orientation of the horizontal maximum principal stress in the present-day stress field (Zoback et al., 2003). Less frequently, drilling-induced tensile fractures were observed, primarily at Site C0001 in the splay fault thrust sheet. Breakout orientations at Sites C0006, C0001, and C0004 all indicate northwest–southeast azimuths of the maximum horizontal principal stress (S_{Hmax}) (Fig. F20). In the thrust-dominated tectonic environment, this is consistent with trench-normal shortening, although strike-slip and/or normal faulting stress states are also permissible. Variations of the S_{Hmax} direction among these three sites of as much as 10° – 20° are statistically significant and may be due to local structure. The S_{Hmax} orientations deviate from the far-field plate motion vectors based on Global Positioning System results (Heki, 2007), implying strain partitioning between convergence and strike-slip motions.

At Site C0002 in the Kumano Basin, by contrast, the orientation of S_{Hmax} is north-east–southwest, or near-perpendicular to that in the more trenchward sites. This is consistent with a normal faulting stress state which extends through the basin section (which exhibits normal faults) and also in the upper 400 m, at least, of the underlying prism. This contrast suggests that the tectonic stress magnitudes differ greatly in the upper part of the prism at sites just a few kilometers apart along our transect.

Gas hydrates and bottom-simulating reflector

At Site C0002, a well-developed BSR is imaged in the seismic data, and LWD logs recorded comprehensive in situ information about the nature of this BSR (see “[Site C0002](#)”). Resistivity logs showed a pattern of elevated resistivity background and spikes for ~200 m above the BSR depth at ~400 m LSF (Fig. [F21](#)). The gamma response indicated that the spikes are in especially sandy intervals as thick as 1–2 m, interpreted as the basal coarse beds in turbidite deposits. Sonic and resistivity responses are consistent with pore space in these sands being partially filled and cemented with gas hydrate. In contrast, similar sands below the BSR reflector depth show no elevated resistivity response. In a zone 80 m deeper and ~70 m thick, a *low* resistivity response in the sandy beds suggests a potential gas-charged interval beneath the gas hydrate stability field. The logging data indicate that the BSR reflectivity is a response to both a small velocity high from hydrate cement in the hydrate stability zone and a more significant velocity low caused by the presence of uncemented sediments and/or free gas below the stability field. Ongoing further analysis will quantify the amount of pore space charged with hydrate in the zone above the BSR and, integrated with 3-D seismic analysis, the total amount of gas in this region of the Kumano Basin section.

Taken as a whole, the results of Expedition 314 LWD drilling show that both the tectonic history and present-day stress conditions in the forearc basin region differ greatly from those in the outer accretionary prism thrust sheets and faults. This was manifested in both the logging and image data and in the difficult drilling conditions in the splay fault thrust sheet, where borehole caving and collapse was a near-constant risk. We tentatively conclude that this is an indication that the basic concept of the NanTroSEIZE transect—to span the lateral boundary between the aseismic outer accretionary prism and the seismogenic inner accretionary prism and forearc basin—is validated even by the LWD-based observations in the upper 400 to 1400 m LSF. In particular, the apparent boundary in the state of stress between Sites C0001 and C0002 (only 10 km apart) implies that these sites span the updip-locked boundary zone. We hope that future deep riser drilling will test these inferences as we drill from the forearc basin region to the actual plate interface fault system.

Preliminary scientific assessment

Expedition 314 is unique in Deep Sea Drilling Project/ODP/IODP history for two important reasons:

1. It was the first expedition of NanTroSEIZE, the first “Complex Drilling Project” in IODP, and therefore this expedition was explicitly seen as a part of a larger effort and not necessarily a stand-alone science program in its own right.
2. It was the maiden scientific voyage of a new drilling vessel, the *Chikyu*.

Based on the prospectus, our goal was to drill and log with the full suite of LWD/MWD tools a transect of six primary sites, including two on the incoming plate, two through major active thrust faults, and two that serve as pilots for deeper riser drilling but also address scientific targets in the splay fault thrust sheet and the Kumano forearc basin and underlying prism. The operational plan was structured very differently from previous ODP/IODP expeditions, with approximately one-third of the total 57 days allocated explicitly as undivided contingency time. We also used a logging system completely new to IODP (seismicVISION), as well as several systems that had rarely been used before (sonicVISION and adnVISION).

Overall success

We faced many challenges brought on by mechanical failure, very difficult natural drilling conditions, and our collective inexperience with the organizational structure on board the *Chikyu* during Expedition 314. Nevertheless, we were able to drill and log successfully to full planned drilling depth (or at least to a depth sufficient to meet our objectives) at most of the planned sites. In particular, we consider the achievement of drilling the two future riser sites (C0001 and C0002) to full planned TD of 1000 and 1400 mbsf, respectively, to be a major achievement. We were able to drill across the potentially unstable frontal thrust zone and ~130 m into the footwall at Site C0006 as planned. We were also able to successfully drill across the main splay fault zone at Site C0004, although this had to be done at a different, shallower depth (by several hundred meters) than originally planned after Site C0003 proved too unstable to successfully drill a borehole to the fault. We established in situ physical properties at sites in the thrust sheets, prism rocks, faults, and basin sediments; documented present-day stresses through borehole fractures and breakouts; and collected key data that will closely tie the 3-D seismic reflection volume to actual physical attributes of the rocks (especially when interpreted along with core data). The

breakout stress information in particular directly addresses key objectives central to the NanTroSEIZE mission and is a major result of this expedition.

Challenges

Because of lost time from a variety of events, we were unable to attempt drilling at proposed Sites NT1-01 or NT1-07, the two reference sites on the incoming plate. The large amount of built-in contingency time was consumed by time lost to failure of mechanical systems, difficult drilling conditions including stuck pipe and a BHA with the LWD tools, and simple inexperience with estimating time needed to complete operations. The reference sites were important objectives, but their highest value objectives come through coring, not logging. We deemed these sites least important to obtain LWD logs from, relative to the sites on the active accretionary prism/plate boundary zone. Therefore, while regrettable, the inability to drill and log them during Expedition 314 is not a major setback to the program.

Unquestionably, two major unforeseen events were key in using up the contingency time during the expedition. The first was the failure of the dynamic positioning system as we reached TD at Site C0001. Troubleshooting and fixing this problem used up 7 days of operations time, during which no drilling could be done. The second was the lost BHA incident at Site C0003. Because the BHA included a complete set of the valuable LWD tools and a radioactive neutron source, fishing for the stuck pipe was mandatory, though it proved unsuccessful in the end. This incident cost another 8 days of the expedition. It also had repercussions for the rest of the expedition, as we had no ability to use a radioactive source and had to forego porosity/density data at our final two sites and also had to use significant operational time to drill pilot holes. Both of these downtime incidents were not avoidable in our judgment, given the seriousness of the incidents and the attention paid by the governmental agencies in Japan to loss of the radioactive source for safe and environmentally concerned operations.

The Kuroshio Current also presented a major challenge. Despite optimistic hopes, the current was present at all sites and more often than not ran at 3 kt or greater velocity. This made many different rig operations more difficult, from running drill pipe into the water to operating the ROV. The vortex-induced vibration of the drill string when the current was flowing strongly caused shaking of the top drive and associated rig equipment, necessitating frequent maintenance as bolts were loosened. It also caused substantial downtime as the best mitigation for running into the hole in the current

was to move the ship upstream slowly then drift with the current while lowering pipe. The ROV operations were also hampered by the current and, in several cases, damage to the ROV and its umbilical cable were caused by the strong current.

The difficult borehole conditions in this tectonically active faulting environment obviously caused substantial loss of operational time and failure of equipment. At several locations, Site C0005 in particular, pilot hole drilling or hole conditioning used up substantial amounts of time that was then unavailable for LWD operations. Finally, the pioneering nature of this first expedition on the *Chikyu* meant that we had to work hard to establish basic routines for interaction between the Co-Chief Scientists, Expedition Project Manager, and Operations Superintendent and also for basic operational procedures onboard. While we struggled with these issues in the early weeks of the expedition, we saw considerable improvements as time passed and experience was gained. With more experience on all sides, the organization of drilling and scientific activities on the *Chikyu* should proceed smoothly in the future.

In summary, considering all the challenges of pioneering a new operation in a very difficult drilling environment, Expedition 314 was remarkably successful and can be considered a very good start to the NanTroSEIZE project.

References

- Ashi, J., Kuramoto, S., Morita, S., Tsunogai, U., Goto, S., Kojima, S., Okamoto, T., Ishimura, T., Ijiri, A., Toki, T., Kudo, S., Asai, S., and Utsumi, M., 2002. Structure and cold seep of the Nankai accretionary prism off Kumano—outline of the off Kumano survey during YK01-04 Leg 2 cruise. *JAMSTEC J. Deep Sea Res.*, 20:1–8.
- Austin, J.A., Jr., Christie-Blick, N., Malone, M.J., et al., 1998. *Proc. ODP, Init. Repts.*, 174A: College Station, TX (Ocean Drilling Program). doi:10.2973/odp.proc.ir.174a.1998
- Binns, R.A., Barriga, F.J.A.S., Miller, D.J., et al., 2002. *Proc. ODP, Init. Repts.*, 193: College Station, TX (Ocean Drilling Program). doi:10.2973/odp.proc.ir.193.2002
- Flemings, P.B., Behrmann, J.H., John, C.M., and the Expedition 308 Scientists, 2006. *Proc. IODP*, 308: College Station, TX (Integrated Ocean Drilling Program Management International, Inc.). doi:10.2204/iodp.proc.308.2006
- Heki, K., 2007. Secular, transient and seasonal crustal movements in Japan from a dense GPS array: implication for plate dynamics in convergent boundaries. In Dixon, T., and Moore, C. (Eds.), *The Seismogenic Zone of Subduction Thrust Faults*: New York (Columbia Univ. Press), 512–539.
- Kelemen, P.B., Kikawa, E., Miller, D.J., et al., 2004. *Proc. ODP, Init. Repts.*, 209: College Station, TX (Ocean Drilling Program). doi:10.2973/odp.proc.ir.209.2004
- Kimura, G., Silver, E.A., Blum, P., et al., 1997. *Proc. ODP, Init. Repts.*, 170: College Station, TX (Ocean Drilling Program). doi:10.2973/odp.proc.ir.170.1997
- Kinoshita, M., Goto, S., Hamamoto, H., and Yamano, M., 2003. Heat flow distribution and thermal regime across the Nankai accretionary complex. *Eos, Trans. Am. Geophys. Union*, 84(46) (Suppl.):T42C-06 (Abstract).
- Kinoshita, M., Moore, G., von Huene, R., Tobin, H., and Ranero, C.R., 2006. The Seismic Zone Experiment. *Oceanography*, 19(4):28–38.
- Kinoshita, M., Tobin, H., and Thu, M.K., 2007. NanTroSEIZE Stage 1: NanTroSEIZE LWD transect. *IODP Sci. Prosp.*, 314. doi:10.2204/iodp.sp.314.2007
- Kodaira, S., Takahashi, N., Park, J., Mochizuki, K., Shinohara, M., and Kimura, S., 2000. Western Nankai Trough seismogenic zone: results from a wide-angle ocean bottom seismic survey. *J. Geophys. Res.*, 105:5887–5905.
- Le Pichon, X., Iiyama, T., Chamley, H., Charvet, J., Faure, M., Fujimoto, H., Furuta, T., Ida, Y., Kagami, H., Lallemand, S., Leggett, J., Murata, A., Okada, H., Rangin, C., Renard, V., Taira, A., and Tokuyama, H., 1987a. Nankai Trough and the fossil Shikoku Ridge: results of Box 6 *Kaiko* survey. *Earth Planet. Sci. Lett.*, 83:186–198. doi:10.1016/0012-821X(87)90065-3
- Le Pichon, X., Iiyama, T., Chamley, H., Charvet, J., Faure, M., Fujimoto, H., Furuta, T., Ida, Y., Kagami, H., Lallemand, S., Leggett, J., Murata, A., Okada, H., Rangin, C., Renard, V., Taira, A., and Tokuyama, H., 1987b. The eastern and western ends of Nankai Trough: results of Box 5 and Box 7 *Kaiko* survey. *Earth Planet. Sci. Lett.*, 83(1–4):199–213. doi:10.1016/0012-821X(87)90066-5
- Mazzotti, S., Le Pichon, X., Henry, P., and Miyazaki, S.-I., 2000. Full interseismic locking of the Nankai and Japan-West Kuril Subduction Zones: an analysis of uniform elastic strain accumulation in Japan constrained by permanent GPS. *J. Geophys. Res.*, 105(B6):13159–13178. doi:10.1029/2000JB900060
- McNeill, L.C., Ienaga, M., Tobin, H., Saito, S., Goldberg, D., Moore, J.C., and Mikada, H., 2004. Deformation and in situ stress in the Nankai accretionary prism from resistivity-at-bit images, ODP Leg 196. *Geophys. Res. Lett.*, 31(2):L02602. doi:10.1029/2003GL018799

- Mikada, H., Becker, K., Moore, J.C., Klaus, A., et al., 2002. *Proc. ODP, Init. Repts.*, 196: College Station, TX (Ocean Drilling Program). [doi:10.2973/odp.proc.ir.196.2002](https://doi.org/10.2973/odp.proc.ir.196.2002)
- Miyazaki, S., and Heki, K., 2001. Crustal velocity field of southwest Japan: subduction and arc-arc collision. *J. Geophys. Res.*, 106(B3):4305–4326. [doi:10.1029/2000JB900312](https://doi.org/10.1029/2000JB900312)
- Moore, G.F., Bangs, N.L., Taira, A., Kuramoto S., Pangborn, E., and Tobin H., 2007. Three-dimensional splay fault geometry and implications for Tsunami generation. *Science.*, 318(5853):1128–1131. [doi:10.1126/science.1147195](https://doi.org/10.1126/science.1147195)
- Moore, G.F., Mikada, H., Moore, J.C., Becker, K., and Taira, A. 2005. Legs 190 and 196 synthesis: deformation and fluid flow processes in the Nankai Trough accretionary prism. In Mikada, H., Moore, G.F., Taira, A., Becker, K., Moore, J.C., and Klaus, A. (Eds.), *Proc. ODP, Sci. Results*, 190/196: College Station, TX (Ocean Drilling Program), 1–25. [doi:10.2973/odp.proc.sr.190196.201.2005](https://doi.org/10.2973/odp.proc.sr.190196.201.2005)
- Moore, G.F., Taira, A., Klaus, A., Becker, L., Boeckel, B., Cragg, B.A., Dean, A., Fergusson, C.L., Henry, P., Hirano, S., Hisamitsu, T., Hunze, S., Kastner, M., Maltman, A.J., Morgan, J.K., Murakami, Y., Saffer, D.M., Sánchez-Gómez, M., Screaton, E.J., Smith, D.C., Spivack, A.J., Steurer, J., Tobin, H.J., Ujiie, K., Underwood, M.B., and Wilson, M., 2001. New insights into deformation and fluid flow processes in the Nankai Trough accretionary prism: results of Ocean Drilling Program Leg 190. *Geochem., Geophys., Geosyst.*, 2(10). [doi:10.1029/2001GC000166](https://doi.org/10.1029/2001GC000166)
- Moore, G.F., Taira, A., Klaus, A., et al., 2001. *Proc. ODP, Init. Repts.*, 190: College Station, TX (Ocean Drilling Program). [doi:10.2973/odp.proc.ir.190.2001](https://doi.org/10.2973/odp.proc.ir.190.2001)
- Moore, J.C., Klaus, A., et al., 1998. *Proc. ODP, Init. Repts.*, 171A: College Station, TX (Ocean Drilling Program). [doi:10.2973/odp.proc.ir.171A.1998](https://doi.org/10.2973/odp.proc.ir.171A.1998)
- Nakanishi, A., Kodaira, S., Miura, S., Ito, A., Sato, T., Park, J.-O., Kido, Y., and Kaneda, Y., submitted. Detailed structural image around splay fault branching in the Nankai subduction zone: results from a high-density ocean-bottom seismic survey. *J. Geophys. Res.*
- Nakanishi, A., Takahashi, N., Park, J.-O., Miura, S., Kodaira, S., Kaneda, Y., Hirata, N., Iwasaki, T., and Nakamura, M., 2002. Crustal structure across the coseismic rupture zone of the 1944 Tonankai earthquake, the central Nankai Trough seismogenic zone. *J. Geophys. Res.*, 107(B1):2007. [doi:10.1029/2001JB000424](https://doi.org/10.1029/2001JB000424)
- Obana, K., Kodaira, S., Mochizuki, K., and Shinohara, M., 2001. Micro-seismicity around the seaward updip limit of 1946 Nankai earthquake dislocation area. *Geophys. Res. Lett.*, 28(12):2333–2336. [doi:10.1029/2000GL012794](https://doi.org/10.1029/2000GL012794)
- O'Brien, P.E., Cooper, A.K., Richter, C., et al., 2001. *Proc. ODP, Init. Repts.*, 188: College Station, TX (Ocean Drilling Program). [doi:10.2973/odp.proc.ir.188.2001](https://doi.org/10.2973/odp.proc.ir.188.2001)
- Okino, K., Shimakawa, Y., and Nagaoka, S., 1994. Evolution of the Shikoku Basin. *J. Geomagn. Geoelectr.*, 46:463–479.
- Park, J.-O., Tsuru, T., Kodaira, S., Cummins, P.R., and Kaneda, Y., 2002. Splay fault branching along the Nankai subduction zone. *Science*, 297(5584):1157–1160. [doi:10.1126/science.1074111](https://doi.org/10.1126/science.1074111)
- Riedel, M., Collett, T.S., Malone, M.J., and the Expedition 311 Scientists, 2006. *Proc. IODP*, 311: Washington, DC (Integrated Ocean Drilling Program Management International, Inc.). [doi:10.2204/iodp.proc.311.2006](https://doi.org/10.2204/iodp.proc.311.2006)
- Seno, T., Stein, S., and Gripp, A.E., 1993. A model for the motion of the Philippine Sea plate consistent with NUVEL-1 and geological data. *J. Geophys. Res.*, 98:17941–17948.
- Shipley, T.H., Ogawa, Y., Blum, P., et al., 1995. *Proc. ODP, Init. Repts.*, 156: College Station, TX (Ocean Drilling Program). [doi:10.2973/odp.proc.ir.156.1995](https://doi.org/10.2973/odp.proc.ir.156.1995)

- Taira, A., Hill, I., Firth, J.V., et al., 1991. *Proc. ODP, Init. Repts.*, 131: College Station, TX (Ocean Drilling Program). [doi:10.2973/odp.proc.ir.131.1991](https://doi.org/10.2973/odp.proc.ir.131.1991)
- Tobin, H.J., and Kinoshita, M., 2006a. Investigations of seismogenesis at the Nankai Trough, Japan. *IODP Sci. Prosp.*, NanTroSEIZE Stage 1. [doi:10.2204/iodp.sp.nantroseize1.2006](https://doi.org/10.2204/iodp.sp.nantroseize1.2006)
- Tobin, H.J., and Kinoshita, M., 2006b. NanTroSEIZE: the IODP Nankai Trough seismogenic zone experiment. *Sci. Drill.*, 2:23–27. [doi:10.2204/iodp.sd.2.06.2006](https://doi.org/10.2204/iodp.sd.2.06.2006)
- Tréhu, A.M., Bohrmann, G., Rack, F.R., Torres, M.E., et al., 2003. *Proc. ODP, Init. Repts.*, 204: College Station, TX (Ocean Drilling Program). [doi:10.2973/odp.proc.ir.204.2003](https://doi.org/10.2973/odp.proc.ir.204.2003)
- Wang, K., and Hu, Y., 2006. Accretionary prisms in subduction earthquake cycles: the theory of dynamic Coulomb wedge. *J. Geophys. Res.*, 111(B6):B06410. [doi:10.1029/2005JB004094](https://doi.org/10.1029/2005JB004094)
- Wu, H.-Y., Ma, K.-F., Zoback, M., Boness, N., Ito, H., Hung, J.-H., and Hickman, S., 2007. Stress orientations of Taiwan Chelungpu-Fault Drilling Project (TCDFP) hole-A as observed from geophysical logs. *Geophys. Res. Lett.*, 34:L01303. [doi:10.1029/2006GL028050](https://doi.org/10.1029/2006GL028050)
- Zoback, M.D., Barton, C.A., Brudy, M., Castillo D.A., Finkbeiner, T., Grollmund, B.R., Moos D.B., Peska P., Ward, C.D., and Wiprut D.J., 2003. Determination of stress orientation and magnitude in deep wells. *Intl. Jour. Rock Mech.*, 40(7–8):1049–1076. [doi:10.1016/j.ijrmms.2003.07.001](https://doi.org/10.1016/j.ijrmms.2003.07.001)

Expedition 314 Preliminary Report

Table T1. Expedition 314 operations summary.

Hole	Proposed site	Type of drilling	Location		Water depth (mbsl)	Drilled depth (m LSF)	Remark
			Latitude	Longitude			
C0001A	NT2-03B	Pilot	33°14.2945'N	136°42.7139'E	2199.5	1000	Pilot with MWD-GR-APWD
C0001B	NT2-03B	Coring	33°14.3135'N	136°42.7252'E	2189	30.6	Geotechnical coring with HPCS
C0001C	NT2-03B	LWD	33°14.3345'N	136°42.7014'E	2198	77.5	Suspended due to deviation by strong current
C0001D	NT2-03B	LWD	33°14.3286'N	136°42.7040'E	2197.5	976	LWD (GVR-sonic-SVWD-MWD-APWD-ADN)
C0002A	NT3-01B	LWD	33°18.0192'N	136°38.1810'E	1936	1401.5	LWD (GVR-sonic-SVWD-MWD-APWD-ADN)
C0003A	NT2-01D	LWD	33°13.3982'N	136°42.1382'E	2453	533.5	LWD/lost BHA
C0004A	NT2-01I	Pilot	33°13.2424'N	136°43.3349'E	2632	400	Pilot without MWD-GR-APWD
C0004B	NT2-01I	LWD	33°13.2264'N	136°43.3461'E	2637	400	LWD (GVR-sonic-SVWD-MWD-APWD)
C0005A	NT2-01E	Pilot	33°13.5603'N	136°43.1050'E	2446.5	524	Pilot without MWD-GR-APWD
C0005B	NT2-01G	Pilot	33°13.4141'N	136°43.2245'E	2524.5	37	Pilot without MWD-GR-APWD
C0006A	NT1-03B	Pilot	33°01.6430'N	136°47.6550'E	3875	885.5	Pilot with MWD-GR-APWD
C0006B	NT1-03B	LWD	33°01.6350'N	136°47.6390'E	3871.5	885.5	LWD (GVR-sonic-SVWD-MWD-APWD)

Note: LSF = LWD depth below seafloor, MWD = measurement while drilling, GR = gamma radiation, APWD = annular pressure while drilling, HPCS = hydraulic piston coring system, LWD = logging while drilling, GVR = geoVISION resistivity tool, sonic = sonic while drilling (sonic-VISION), SVWD = seismicVISION while drilling, ADN = Azimuthal Density Neutron tool (adnVISION), BHA = bottom-hole assembly.

Figure F1. Kumano Basin region with Expedition 314 drill sites (red circles). Black box = location of the 2006 three-dimensional seismic survey, black line = KR0108-5 two-dimensional seismic survey, yellow arrow = far-field convergence vector between Philippine Sea plate and Japan (Seno, 1993; Heki, 2007).

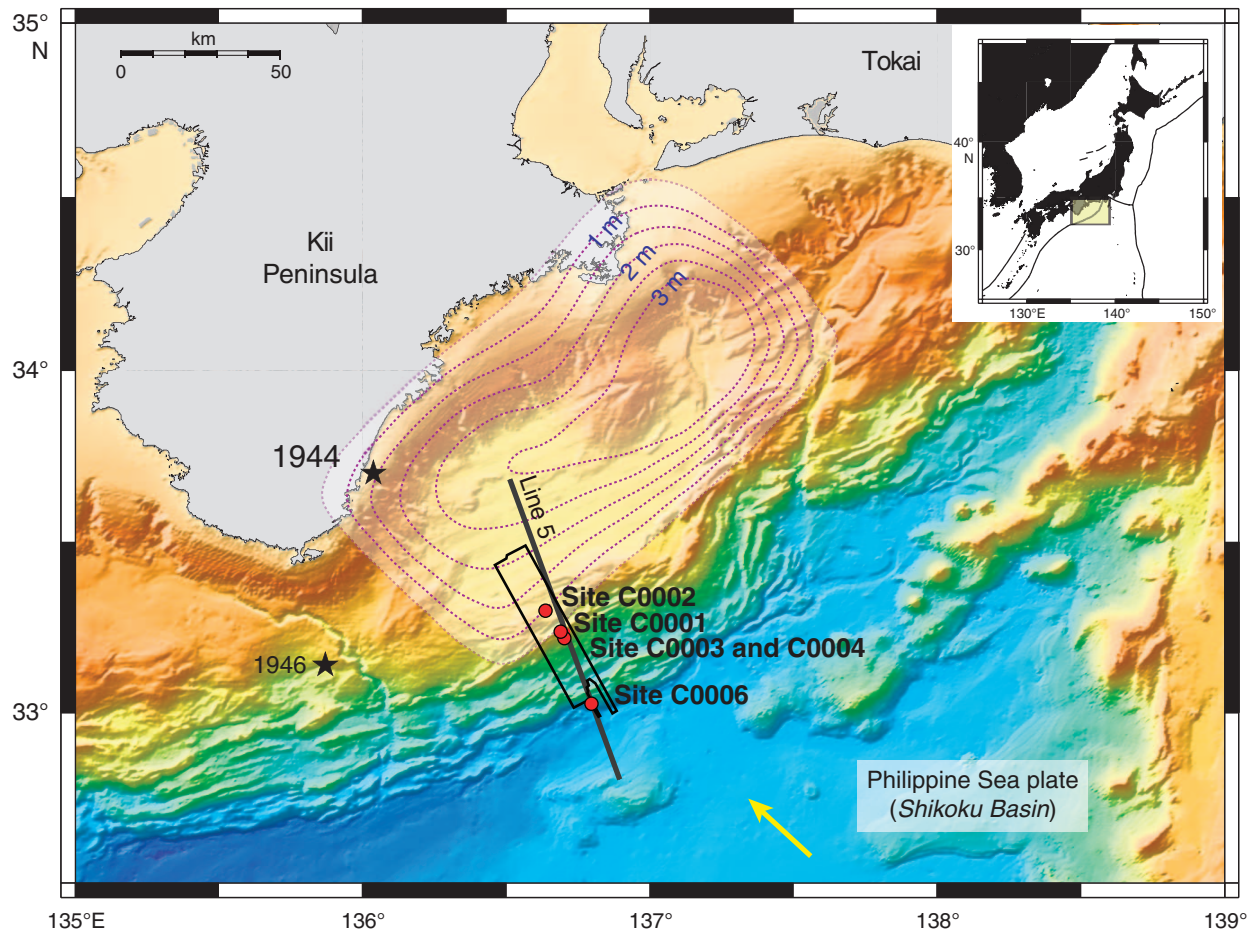


Figure F2. Location of LWD sites drilled during Expedition 314.

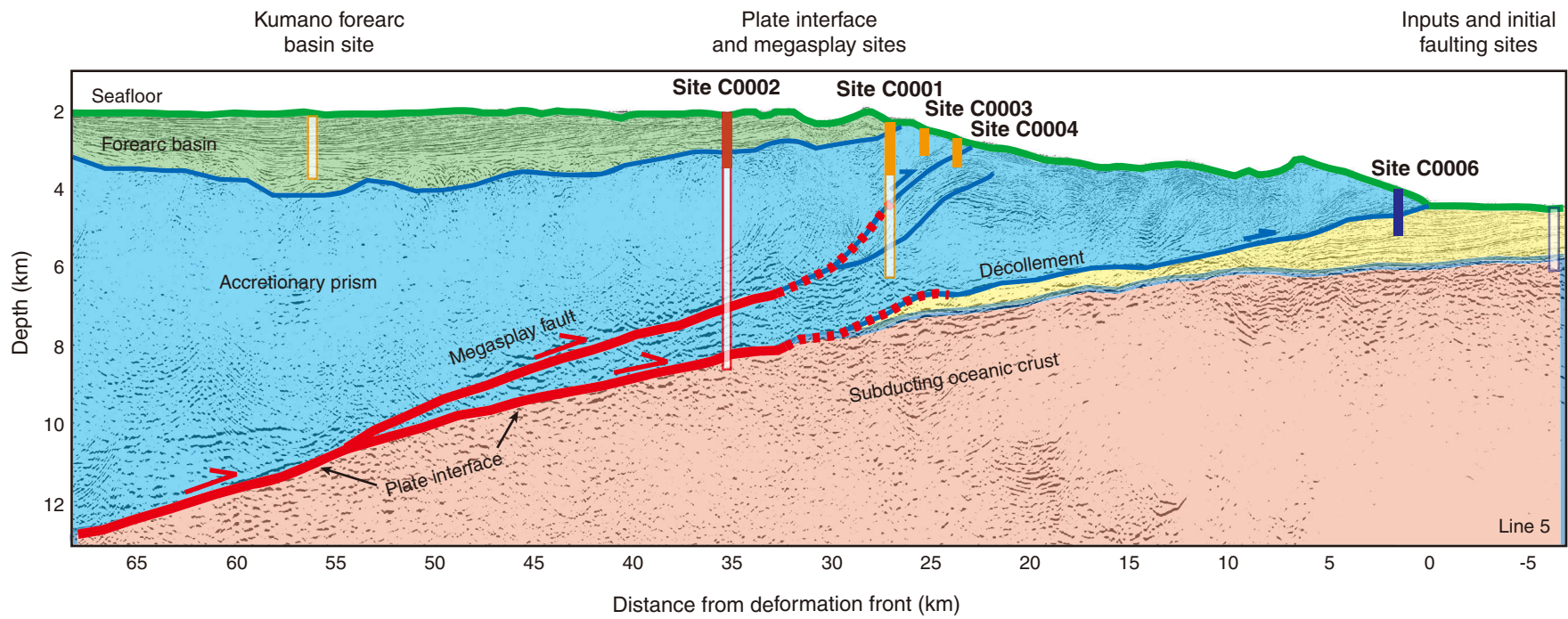


Figure F3. Seismic Profile ODKM-100 along the Nankai Trough axis. Multichannel seismic data obtained by the Center for Deep Earth Exploration, interpretation by T. Ike (pers. comm., 2005). USB = upper Shikoku Basin, LSB = lower Shikoku Basin, LSB-T = lower Shikoku Basin turbidites, VE = vertical exaggeration.

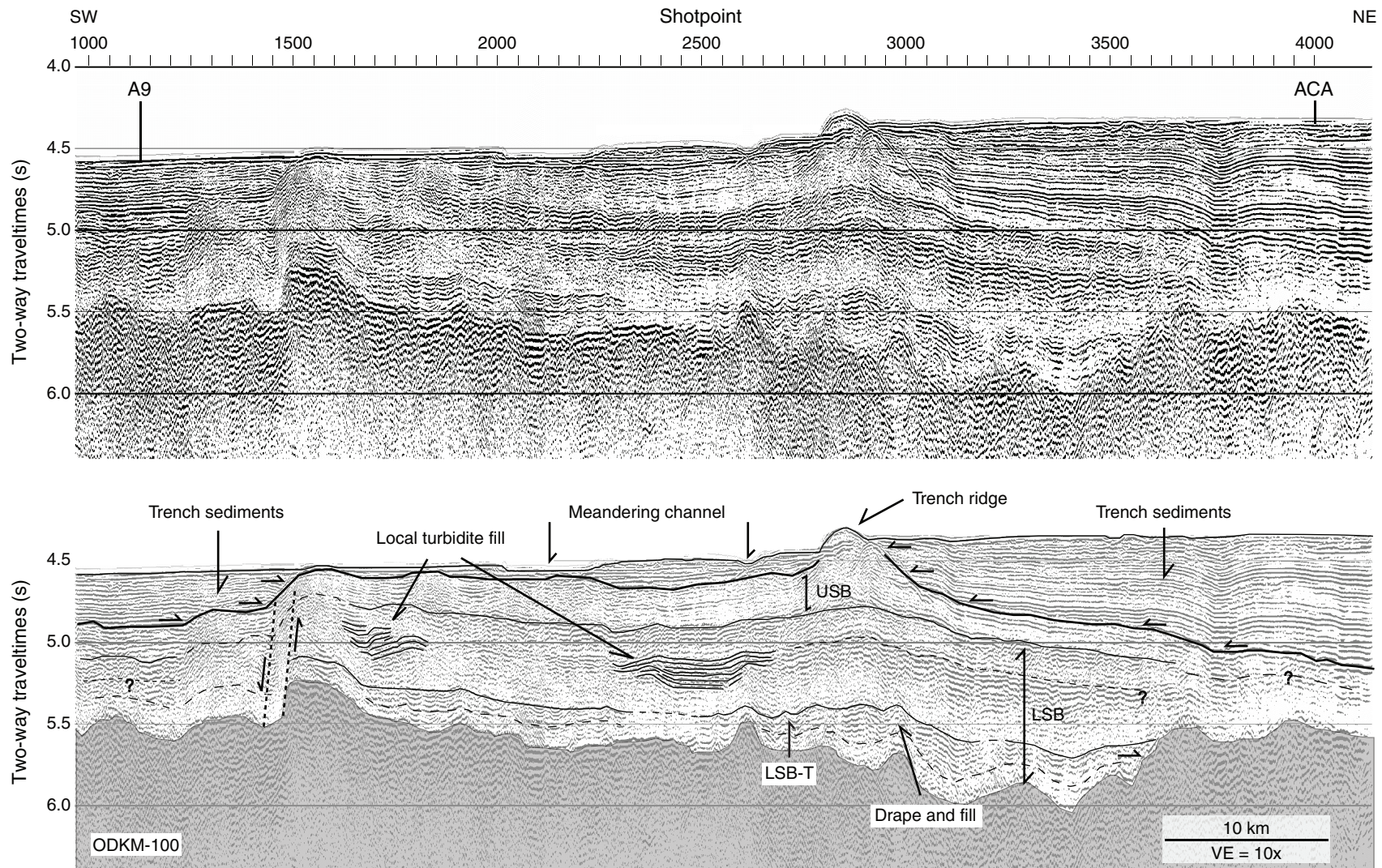


Figure F4. Interpreted three-dimensional seismic Profile IL2645 across the Kumano forearc basin showing four major unconformities (colored lines). VE = vertical exaggeration.

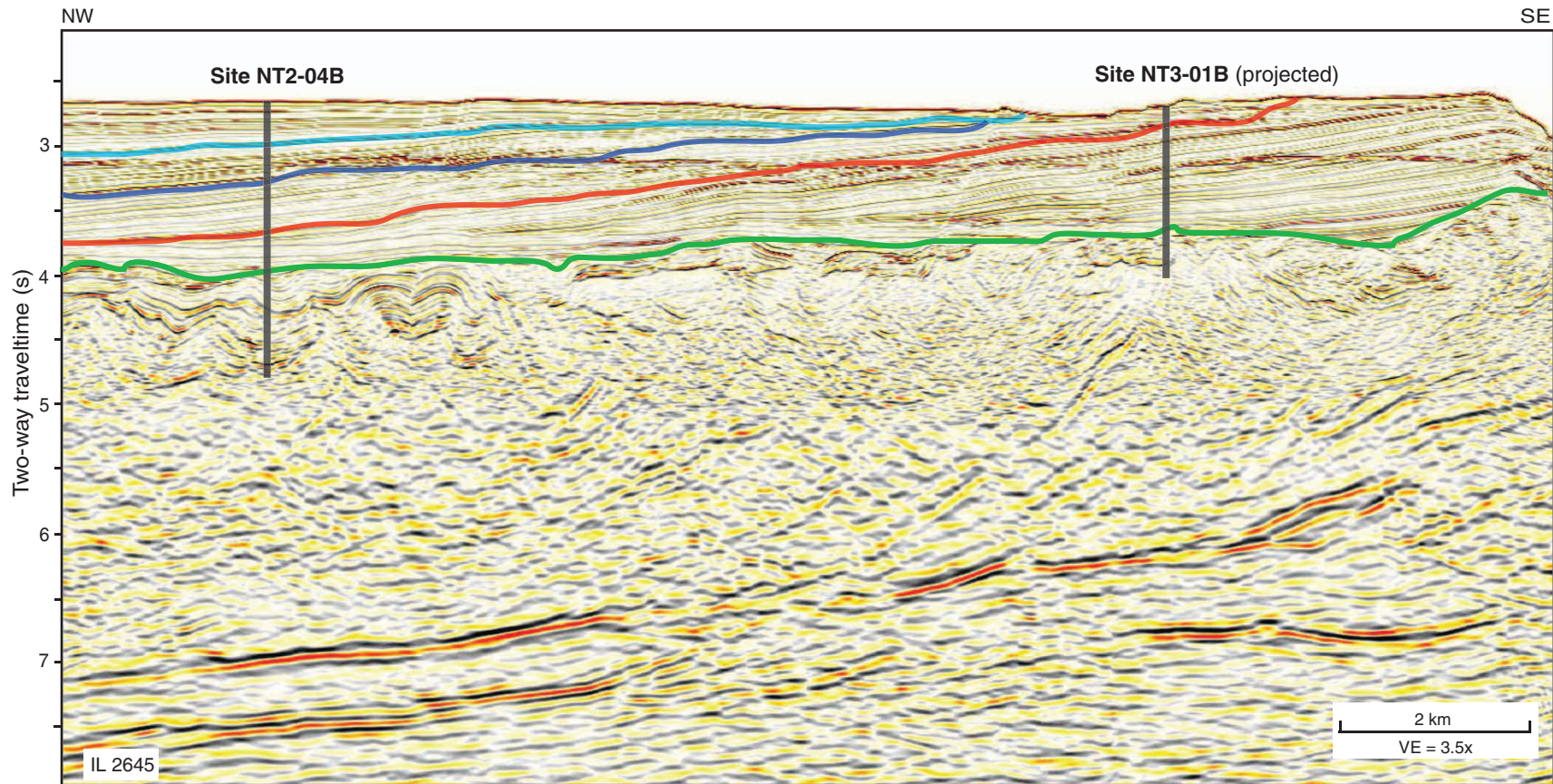


Figure F5. Locations of LWD sites shown with three-dimensional seismic lines (IL = inline, XL = cross-line).

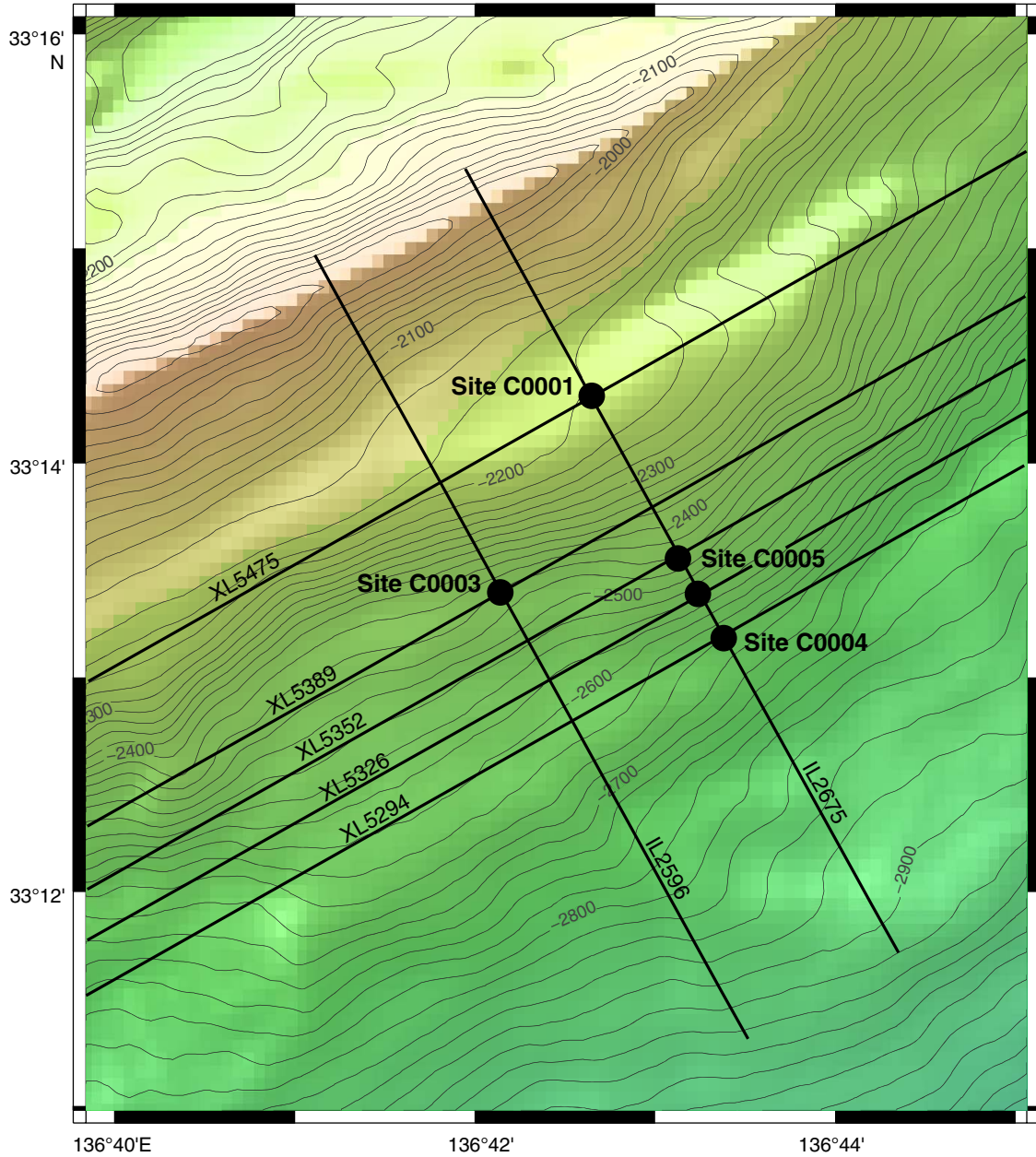


Figure F6. Depth section of three-dimensional seismic profile along the drilled sites (Moore et al., 2007). Note that the section is spliced in the forearc slope (Inline 2675 and Inline 2435). BSR = bottom-simulating reflector, VE = vertical exaggeration.

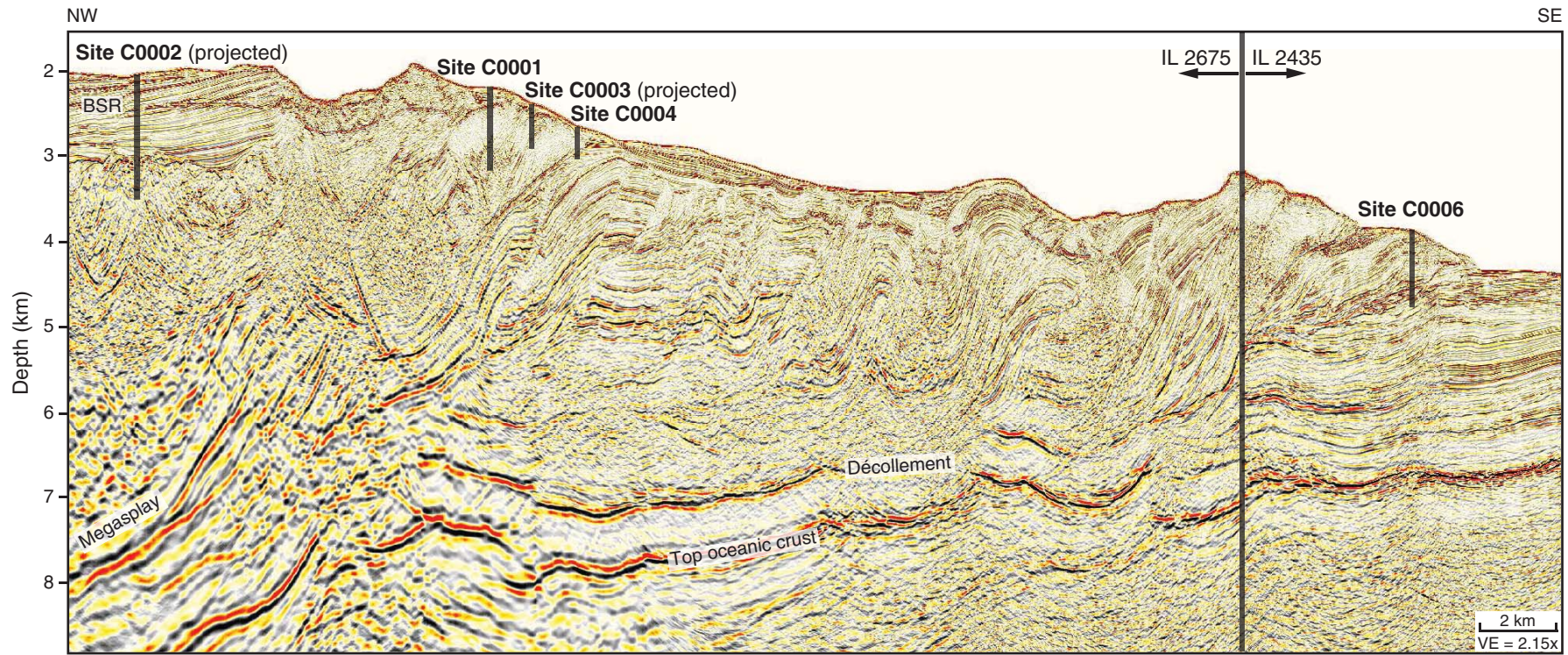


Figure F7. Three-dimensional seismic profiles crossing Site C0001 (Moore et al., 2007). Profile locations plotted in Figures F2 and F8. VE = vertical exaggeration. **A.** Inline 2675. **B.** Cross-line 5476.

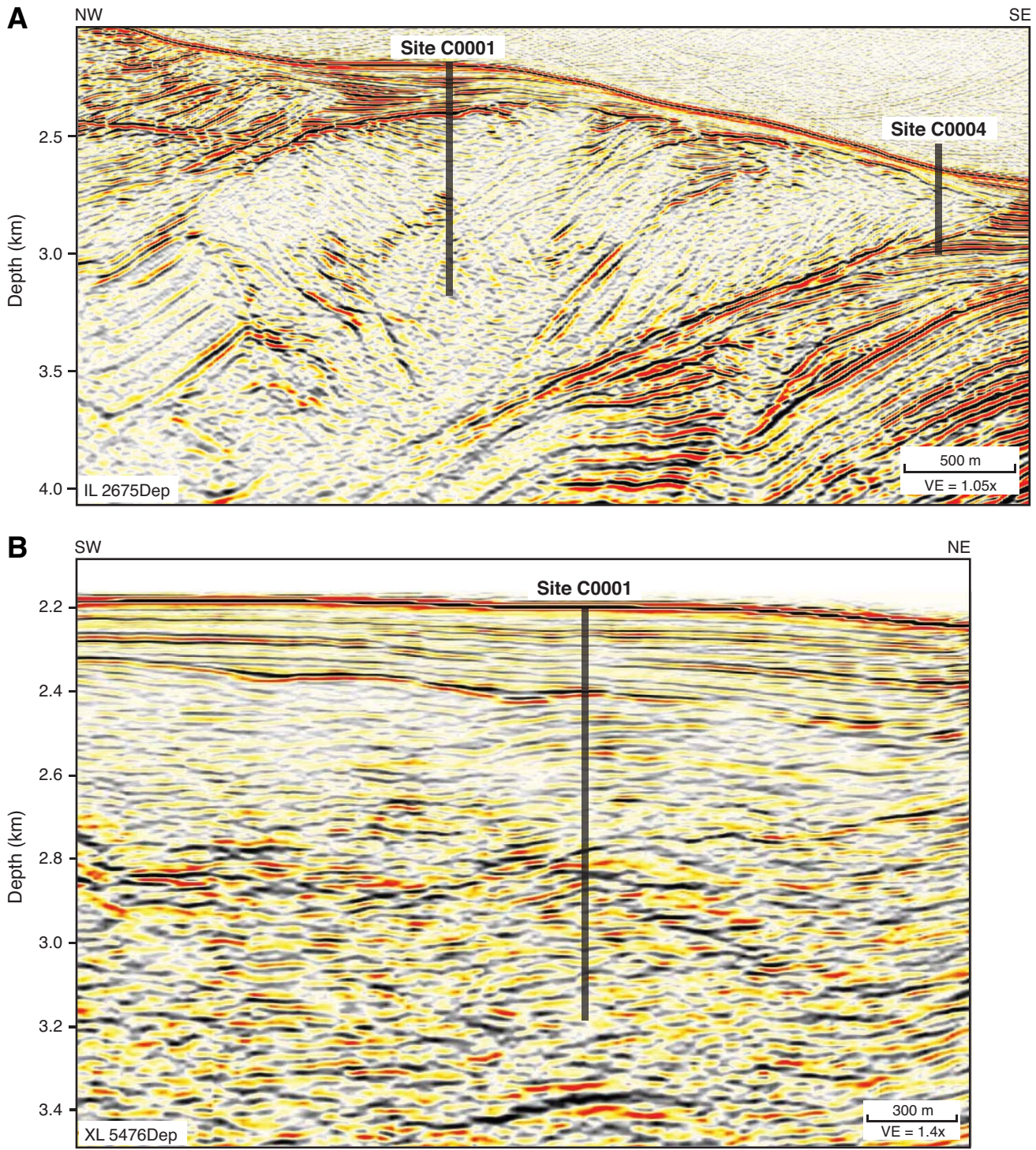


Figure F8. Site C0001 hole locations.

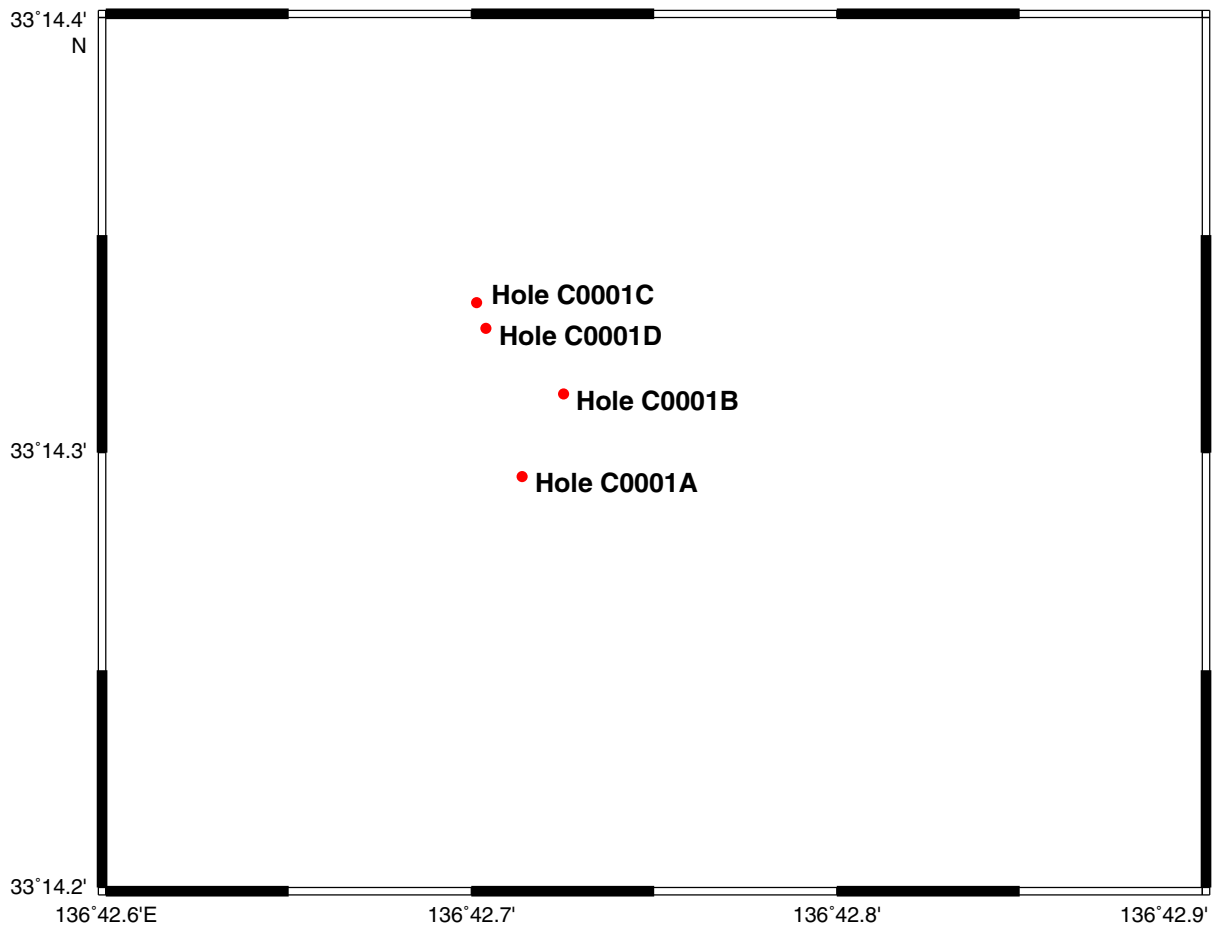


Figure F9. Summary log diagram from Site C0001. Bedding (STRATA_TRUE_DIP) and fracture dips (FRACTURES_TRUE_DIP) from resistivity at bit image. VE = vertical exaggeration, PEF = photoelectric effect, LSF = LWD depth below seafloor.

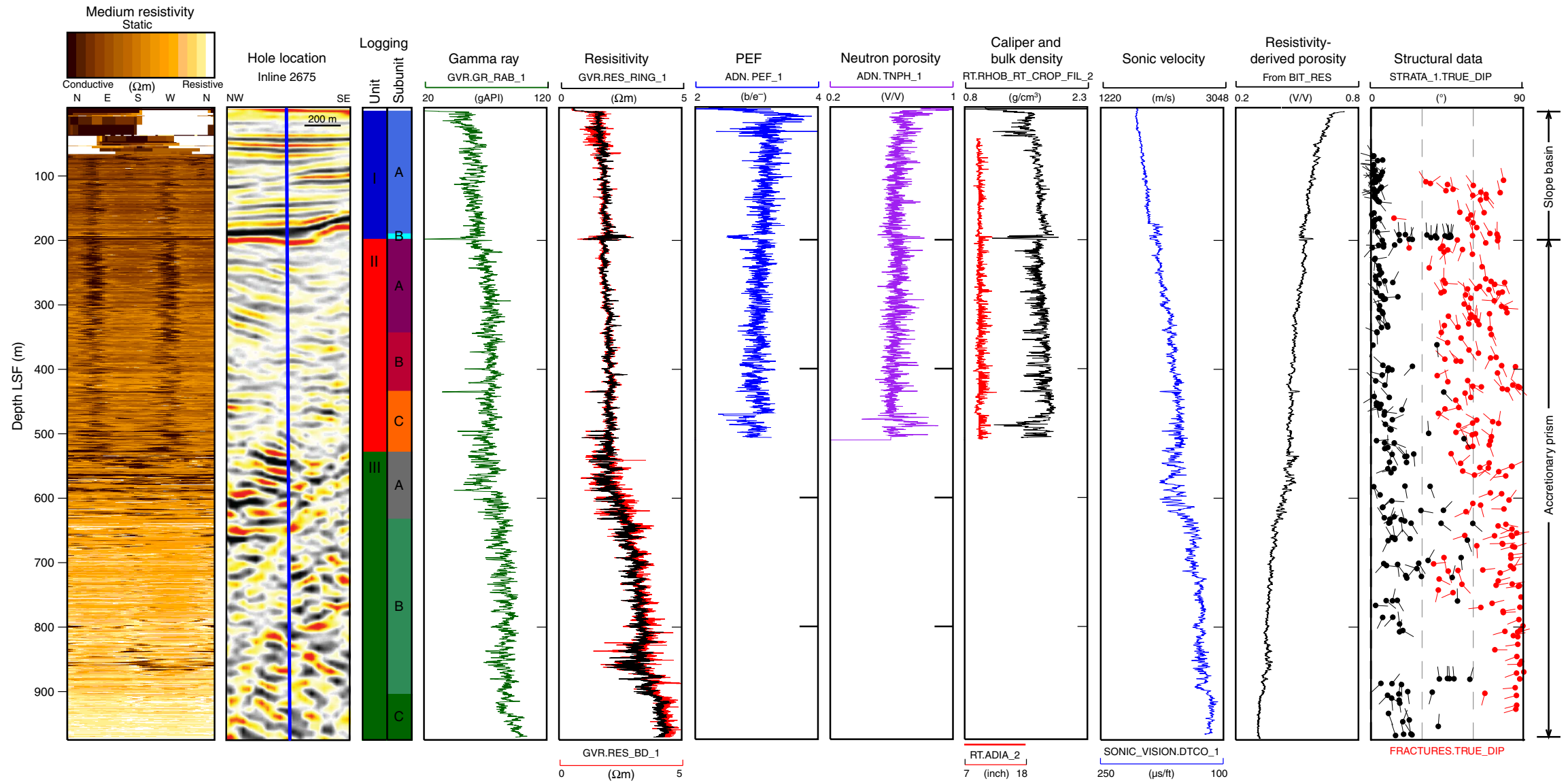


Figure F10. Three-dimensional seismic profile crossing Site C0002 (Moore et al., 2007). Profile locations plotted in Figures F2 and F13. BSR = bottom-simulating reflector, VE = vertical exaggeration. **A.** Inline 2529. **B.** Cross-line 6225.

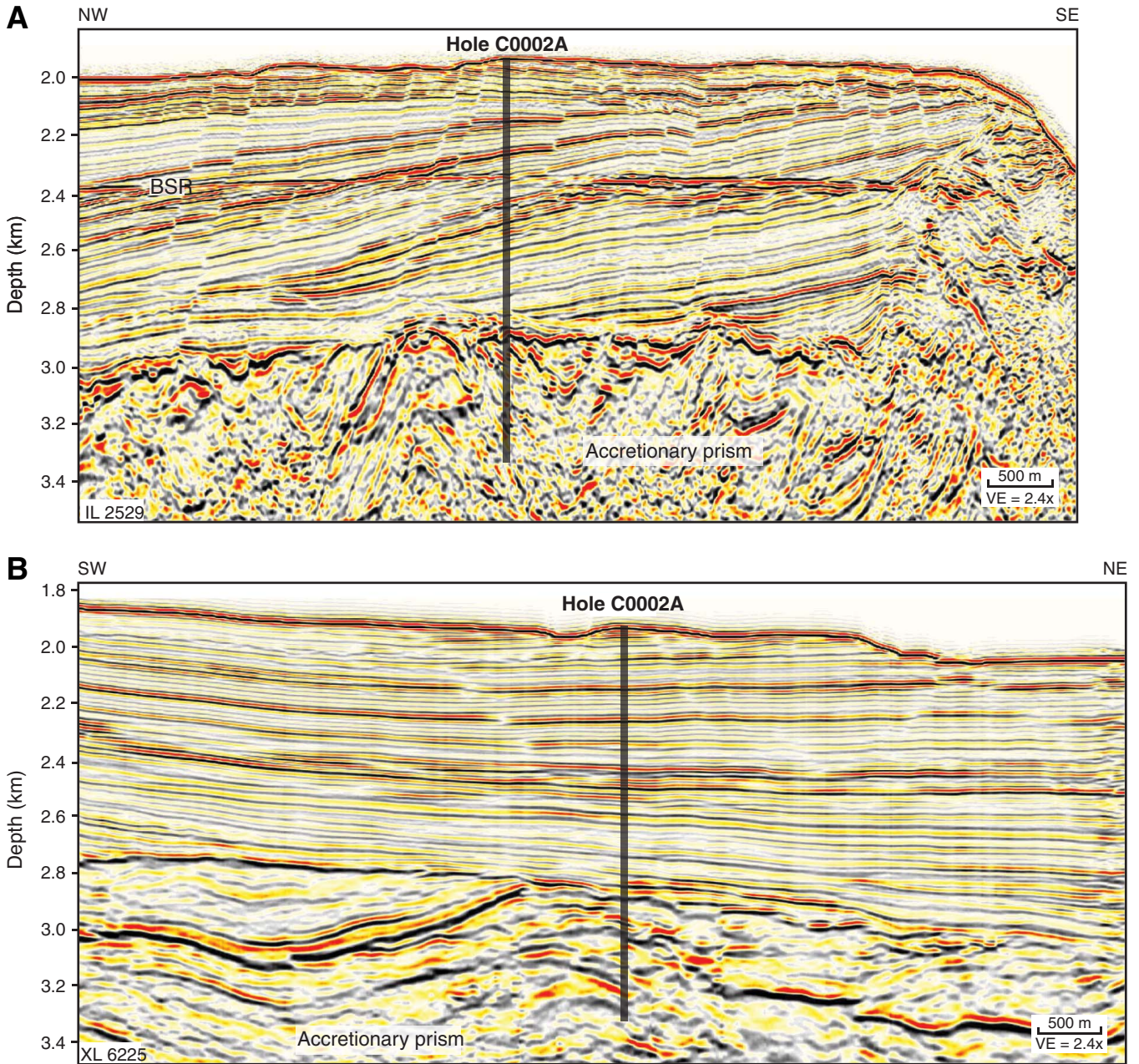


Figure F11. Summary log diagram from Site C0002. Bedding (STRATA_TRUE_DIP) and fracture dips (FRACTURES_TRUE_DIP) from resistivity at bit image. VE = vertical exaggeration, PEF = photoelectric factor, LSF = LWD depth below seafloor.

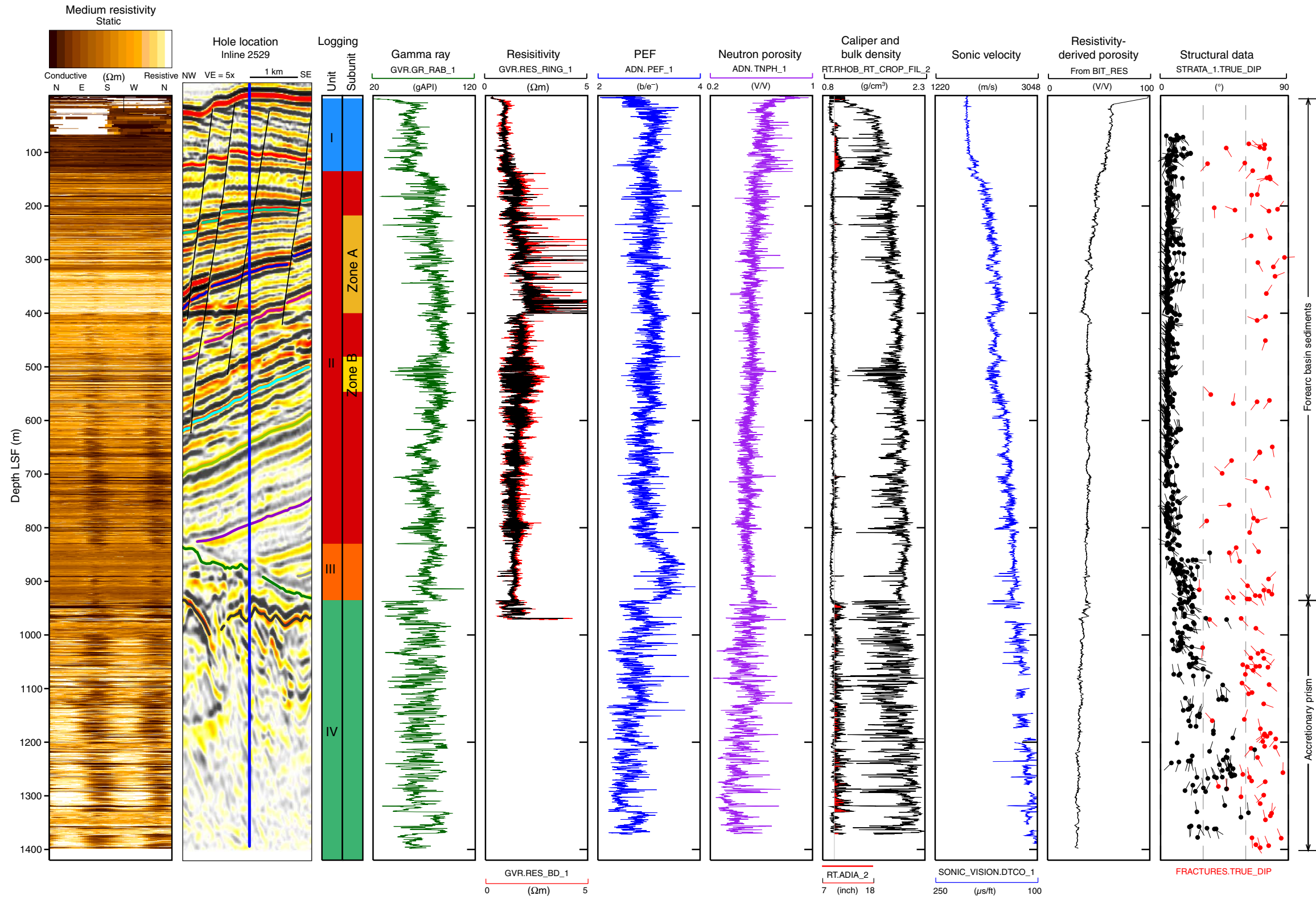


Figure F12. Three-dimensional seismic profile crossing Site C0003 (Moore et al., 2007). Profile location plotted in Figure F2. VE = vertical exaggeration. **A.** Inline 2596. **B.** Cross-line 5389.

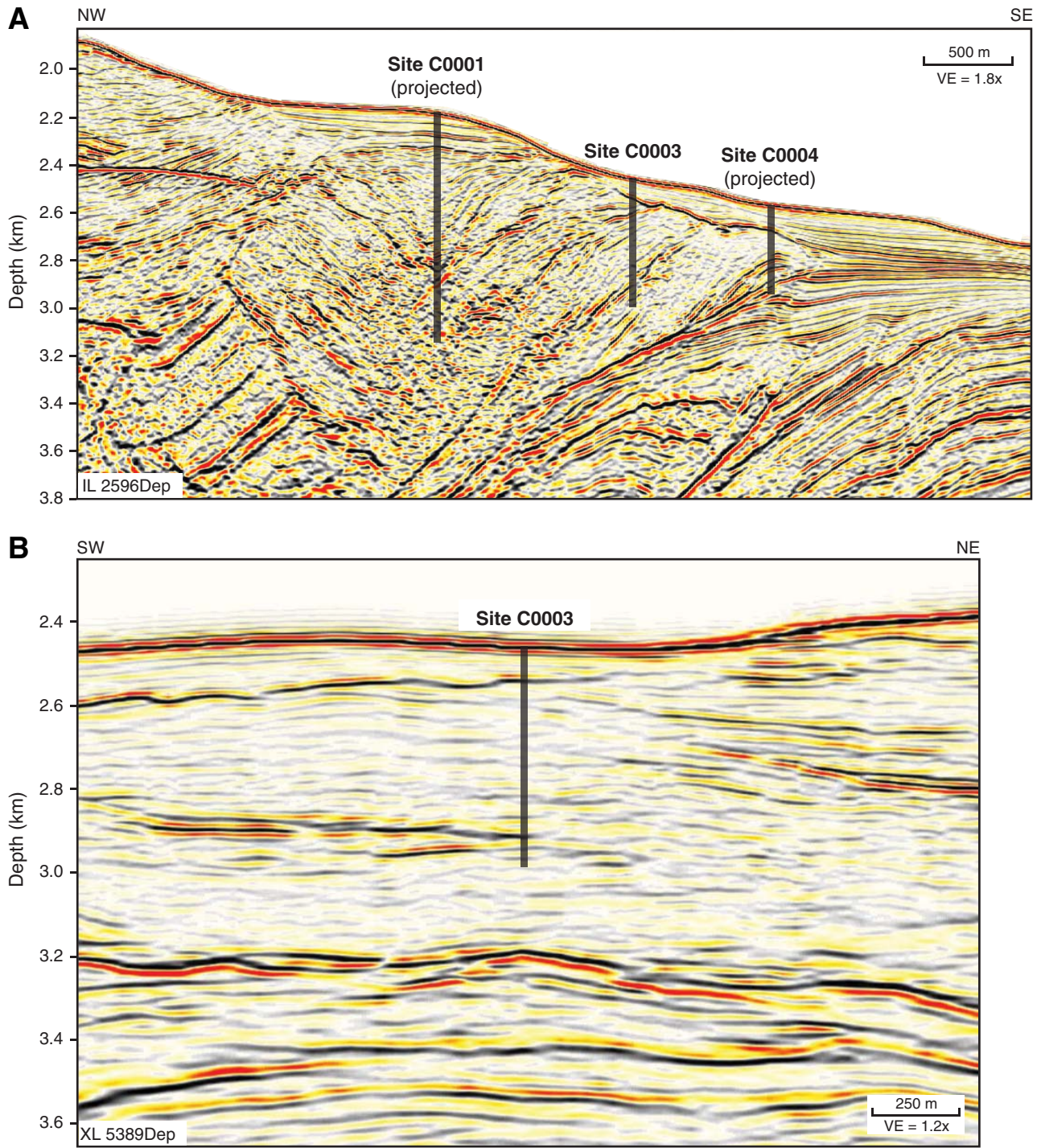


Figure F13. Summary log diagram from Site C0003. Because of the loss of logging-while-drilling bottom-hole assembly at 525 m LWD depth below seafloor (LSF), only real-time data is available. VE = vertical exaggeration.

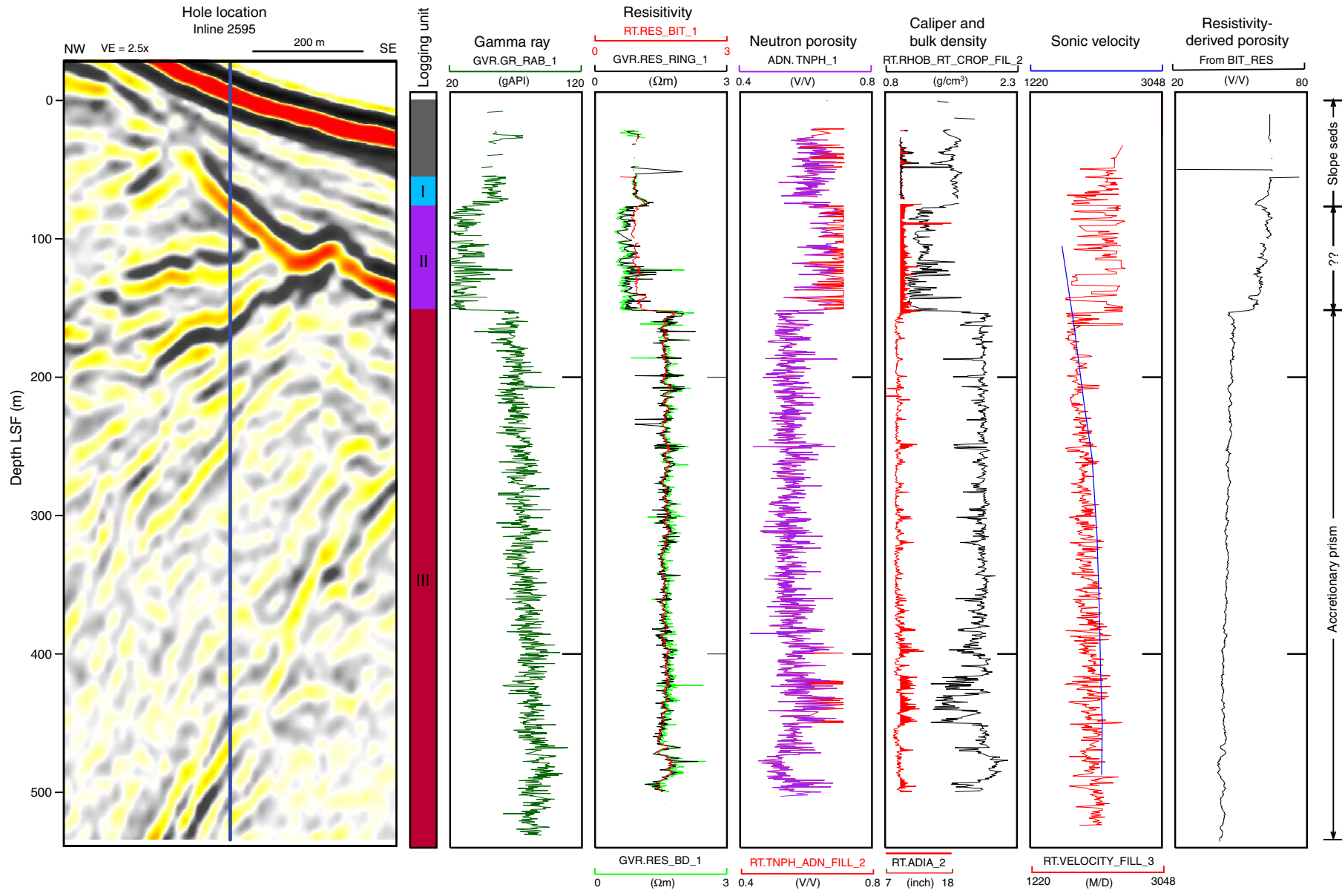


Figure F14. Three-dimensional seismic profiles crossing Site C0004 (Moore et al., 2007). Profile locations plotted in Figures F2 and F15. **A.** Inline 2596. **B.** Cross-line 5294. VE = vertical exaggeration.

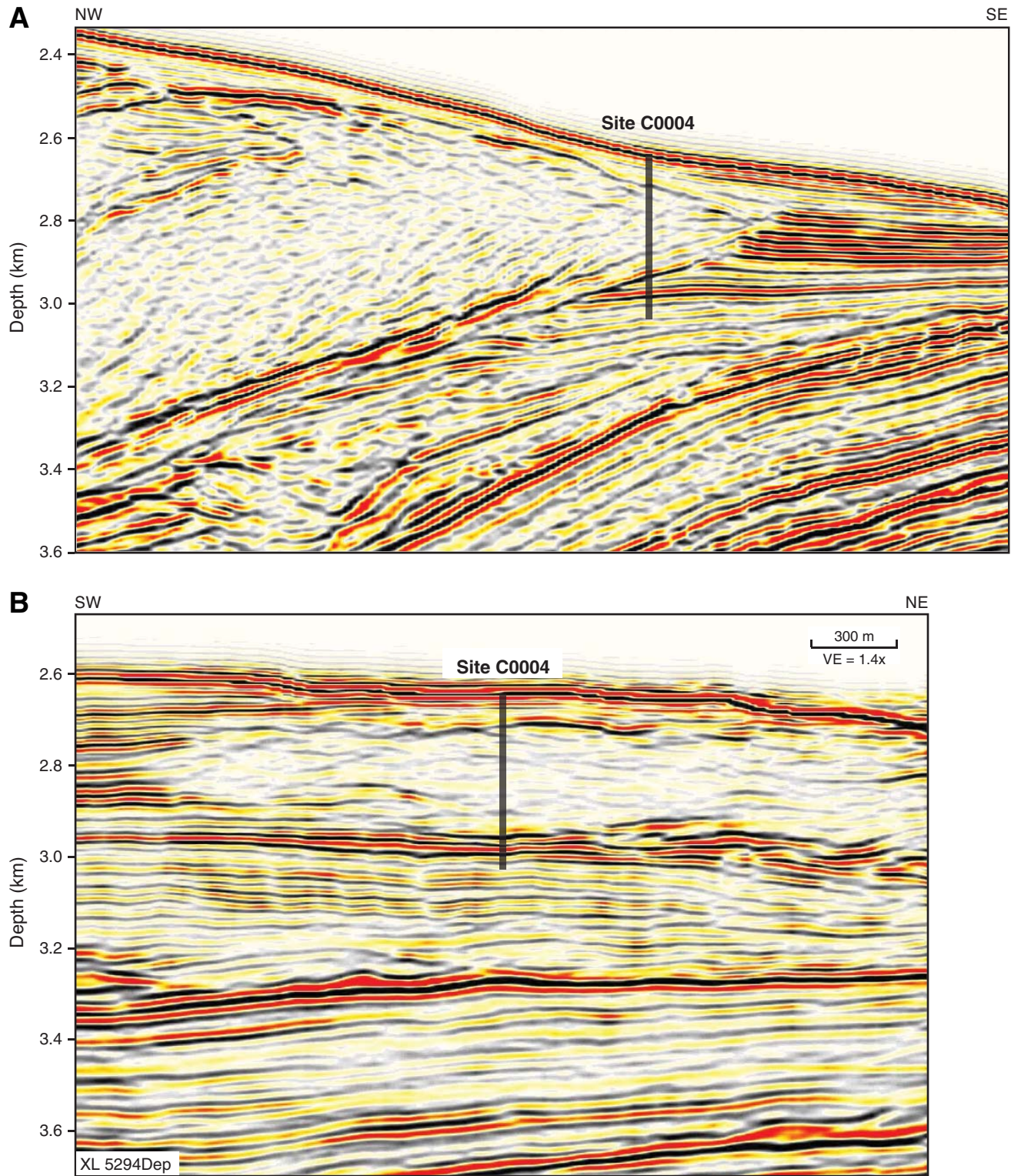


Figure F15. Site C0004 hole locations.

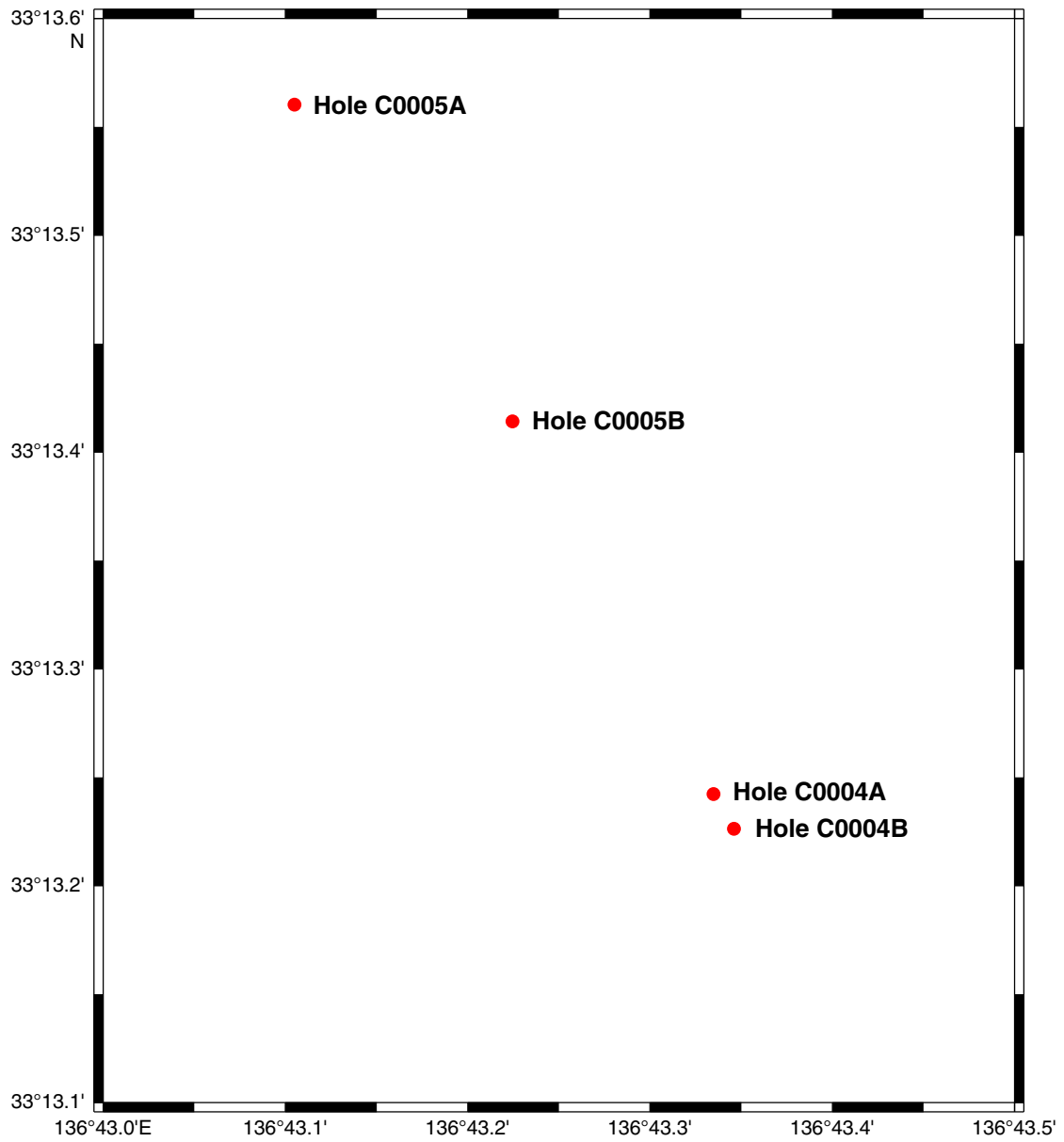


Figure F16. Summary log diagram from Site C0004. Bedding (STRATA_TRUE_DIP) and fracture dips (FRACTURES_TRUE_DIP) from resistivity at bit image. VE = vertical exaggeration, LSF = LWD depth below seafloor.

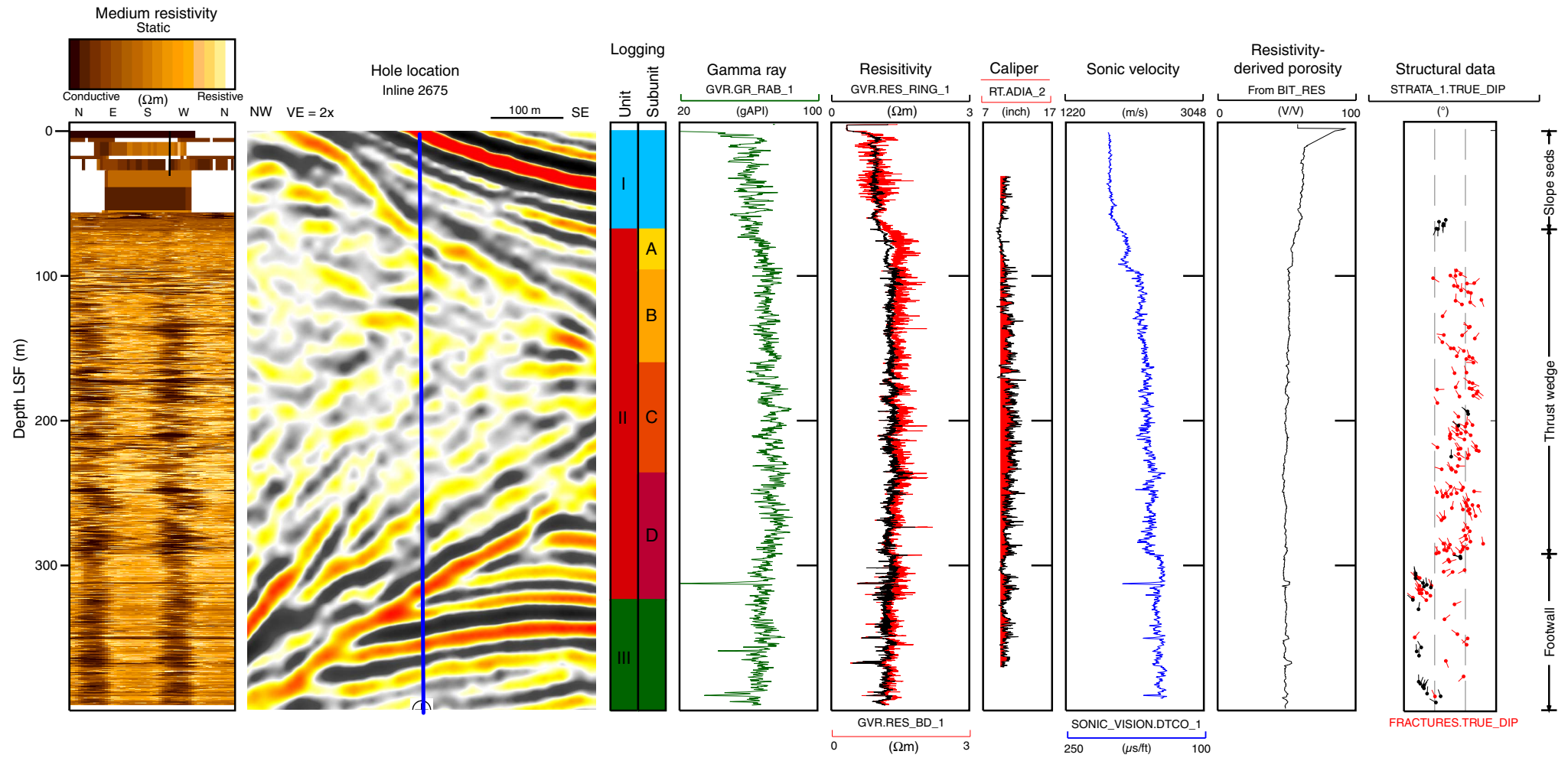


Figure F17. Three-dimensional seismic profile crossing Site C0006 (Moore et al., 2007) is shown on Inline 2435. Profile location is plotted in Figure F2. VE = vertical exaggeration.

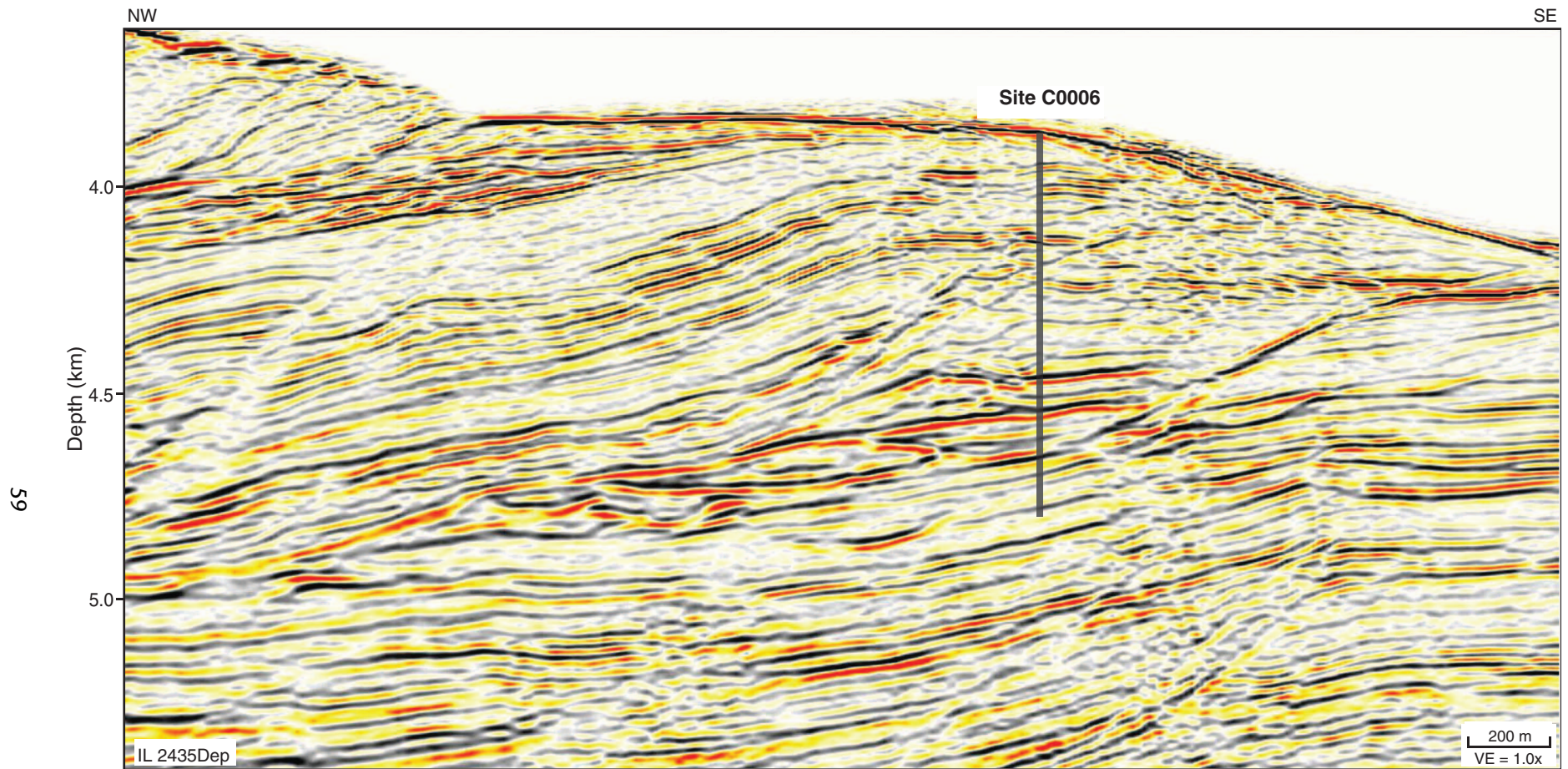


Figure F18. Summary log diagram from Site C0006 showing (from left to right) shallow resistivity image (static), seismic depth section, log units and subunits, ultrasonic caliper and gamma ray radiation, ring and bit resistivity, button resistivity, pseudo porosity derived from bit resistivity, bedding (“STRATA_TRE_DIP”) and fracture (“FRACTURESTRUEDIP”) dip from RAB image. Site C0006 was drilled through early formation stage layer of the accretionary prism. A pilot drilling was made prior to LWD drilling which was completed through some frontal thrusts and possible decollement, reaching to 885 m LSF.

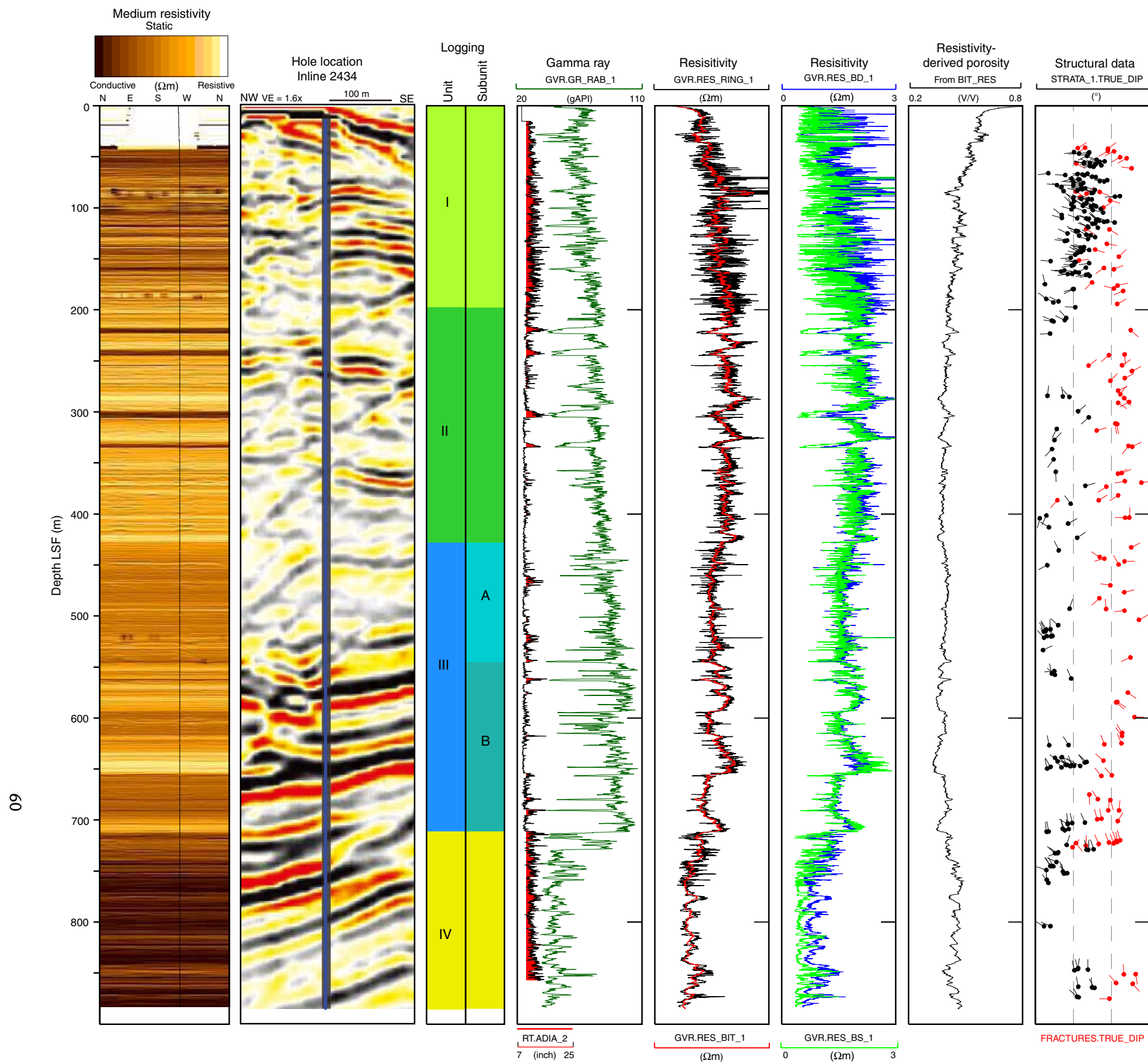


Figure F19. Lithologic summary for Expedition 314 LWD sites. LSF = LWD depth below seafloor.

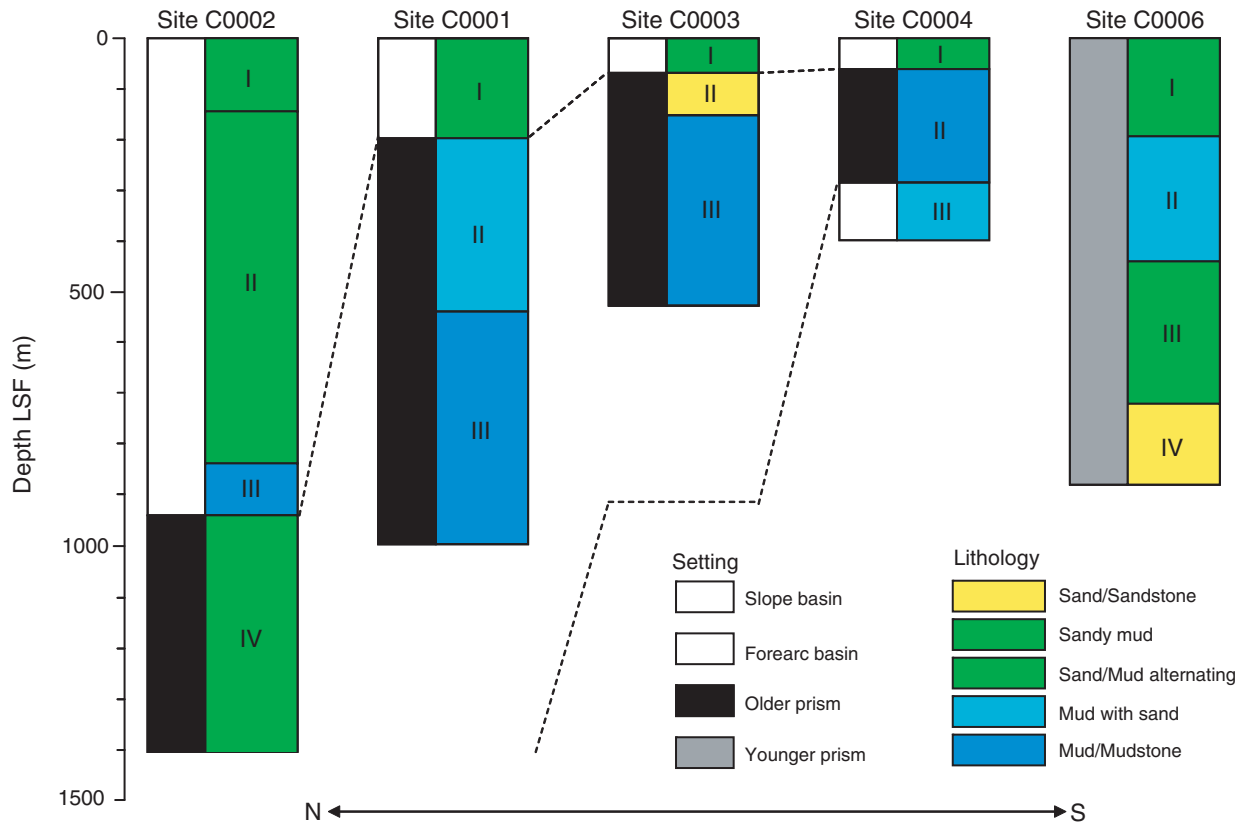


Figure F20. Azimuth of maximum horizontal stress estimated from borehole breakout images at Sites C0001, C0002 (in basin above 936 mbsf), C0004, and C0006 (red lines). Blue line = estimate for older accretionary prism formation below 936 mbsf at Site C0002.

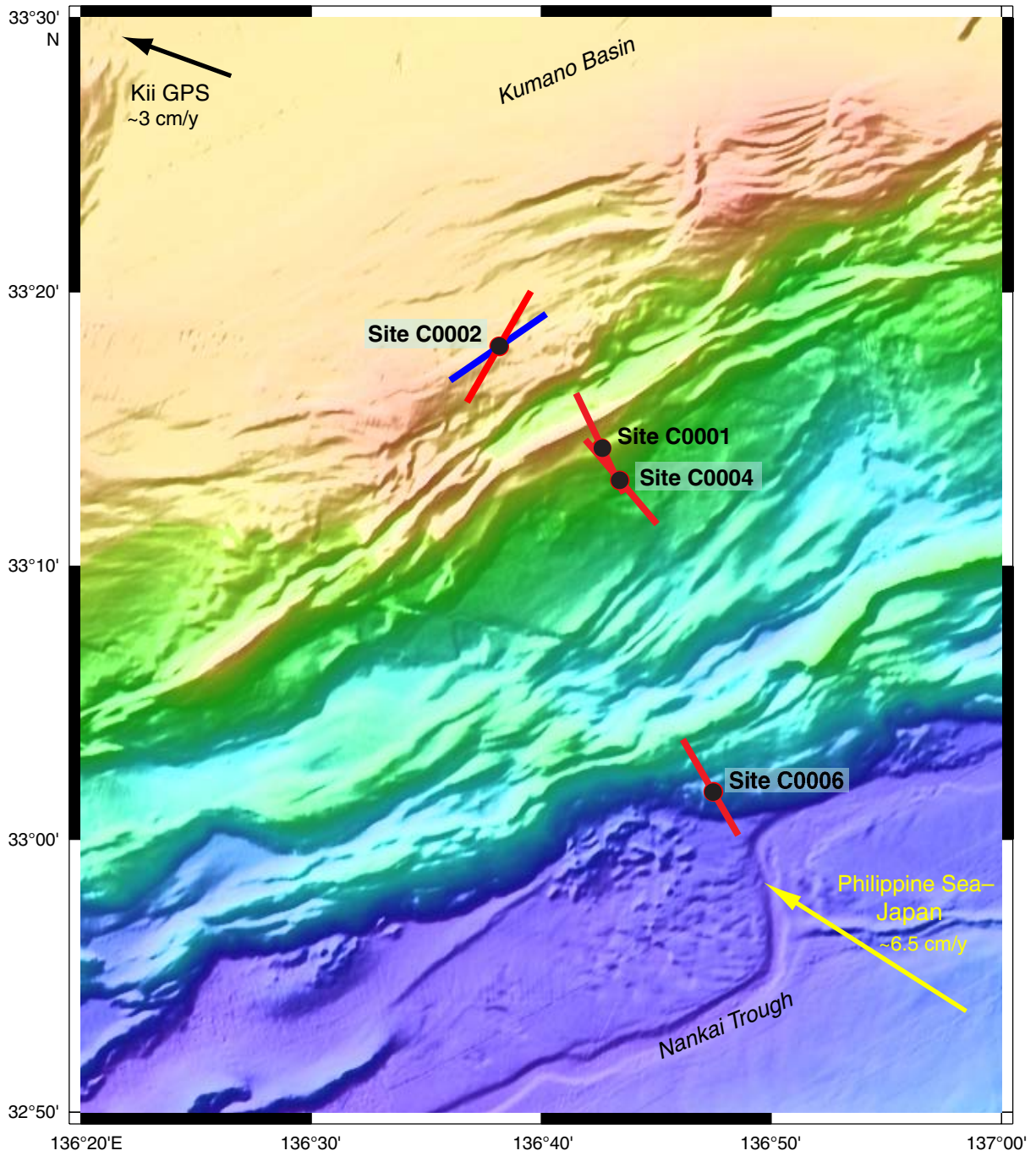


Figure F21. Gas hydrate zone at ~220–400 mbsf at Site C0002 based on high-resistivity image, low gamma radiation, and high *P*-wave velocity log. Base of gas hydrate zone (400 m) matches the bottom-simulating reflector (BSR) identified by the three-dimensional seismic data. LSF = LWD depth below seafloor, VE = vertical exaggeration.

