

M 7.2, KAMCHATKA PENINSULA, RUSSIA

Origin Time: Sat 2016-01-30 03:25:10 UTC (15:25:10 local)

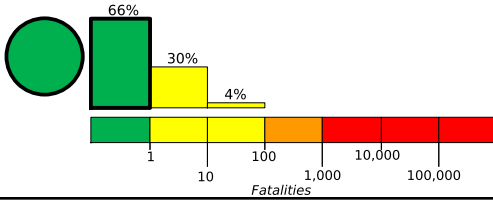
Location: 54.01°N 158.51°E Depth: 161 km

Created: 50 minutes, 26 seconds after earthquake

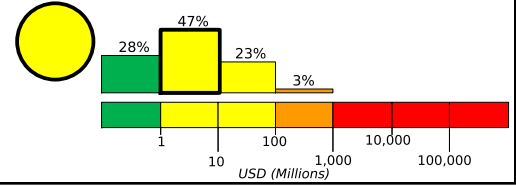
Estimated Fatalities

Yellow alert level for economic losses. Some damage is possible and the impact should be relatively localized. Estimated economic losses are less than 1% of GDP of the Russian Federation. Past events with this alert level have required a local or regional level response.

Green alert level for shaking-related fatalities. There is a low likelihood of casualties.



Estimated Economic Losses

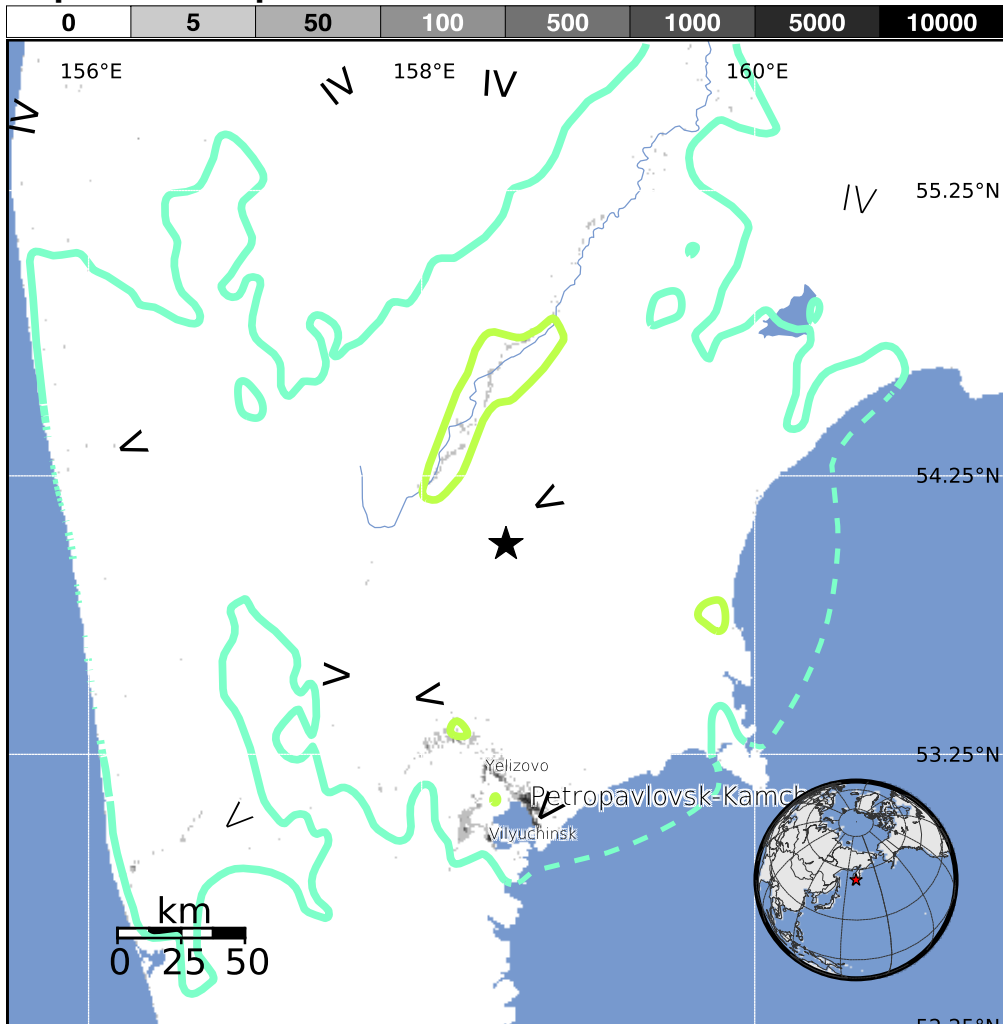


Estimated Population Exposed to Earthquake Shaking

ESTIMATED POPULATION EXPOSURE (k = x1000)	--*	--*	8k*	259k	11k	0	0	0	0	
ESTIMATED MODIFIED MERCALLI INTENSITY	I	II-III	IV	V	VI	VII	VIII	IX	X+	
PERCEIVED SHAKING	Not felt	Weak	Light	Moderate	Strong	Very Strong	Severe	Violent	Extreme	
POTENTIAL DAMAGE	Resistant Structures	none	none	none	V. Light	Light	Moderate	Moderate/Heavy	Heavy	V. Heavy
	Vulnerable Structures	none	none	none	Light	Moderate	Moderate/Heavy	Heavy	V. Heavy	V. Heavy

*Estimated exposure only includes population within the map area.

Population Exposure



Structures:

Overall, the population in this region resides in structures that are a mix of vulnerable and earthquake resistant construction.

Historical Earthquakes (with MMI levels):

Date (UTC)	Dist. (km)	Mag.	Max MMI(#)	Shaking Deaths
1996-06-21	268	6.7	V(280k)	0
1996-01-01	62	6.6	VIII(157)	0
1984-12-28	393	6.7	IX(38)	0

Selected City Exposure

from GeoNames.org

MMI City	Population
VI Yelizovo	41k
V Paratunka	2k
V Atlasovo	5k
V Vilyuchinsk	25k

bold cities appear on map

(k = x1000)

PAGER content is automatically generated, and only considers losses due to structural damage. Limitations of input data, shaking estimates, and loss models may add uncertainty.

<http://earthquake.usgs.gov/earthquakes/eventpage/us20004vxx>

Event ID: us20004vxx