

# Cascadia subduction zone

Chaytor et al. (2004)  
Nelson et al. (2004)



Plate configuration for the Cascadia subduction zone (CSZ). The Juan de Fuca and Gorda plates are subducting northeastwardly oblique beneath the North America plate at ~36 mm/yr in the Humboldt Bay region. Paleoseismic core sites (marine and terrestrial) are plotted as circles.

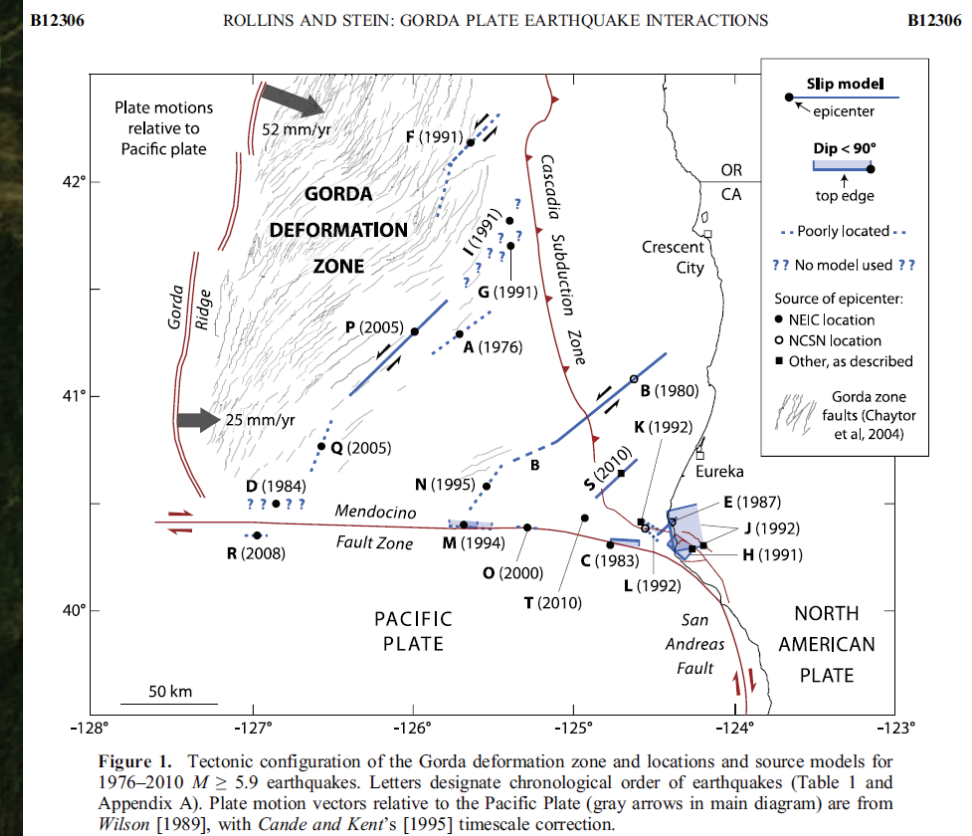
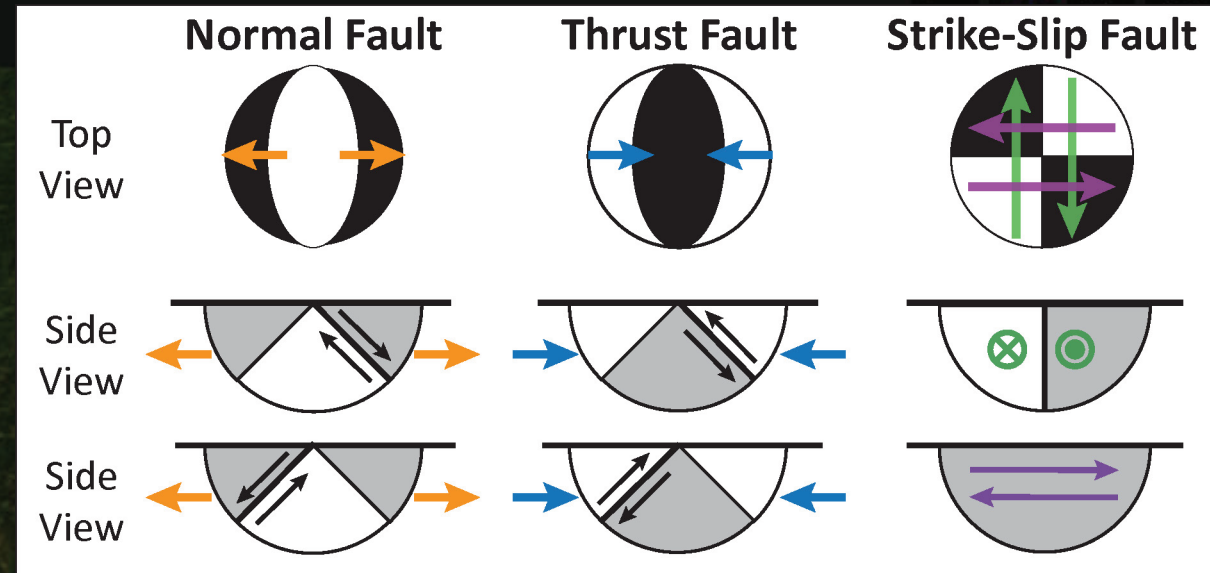
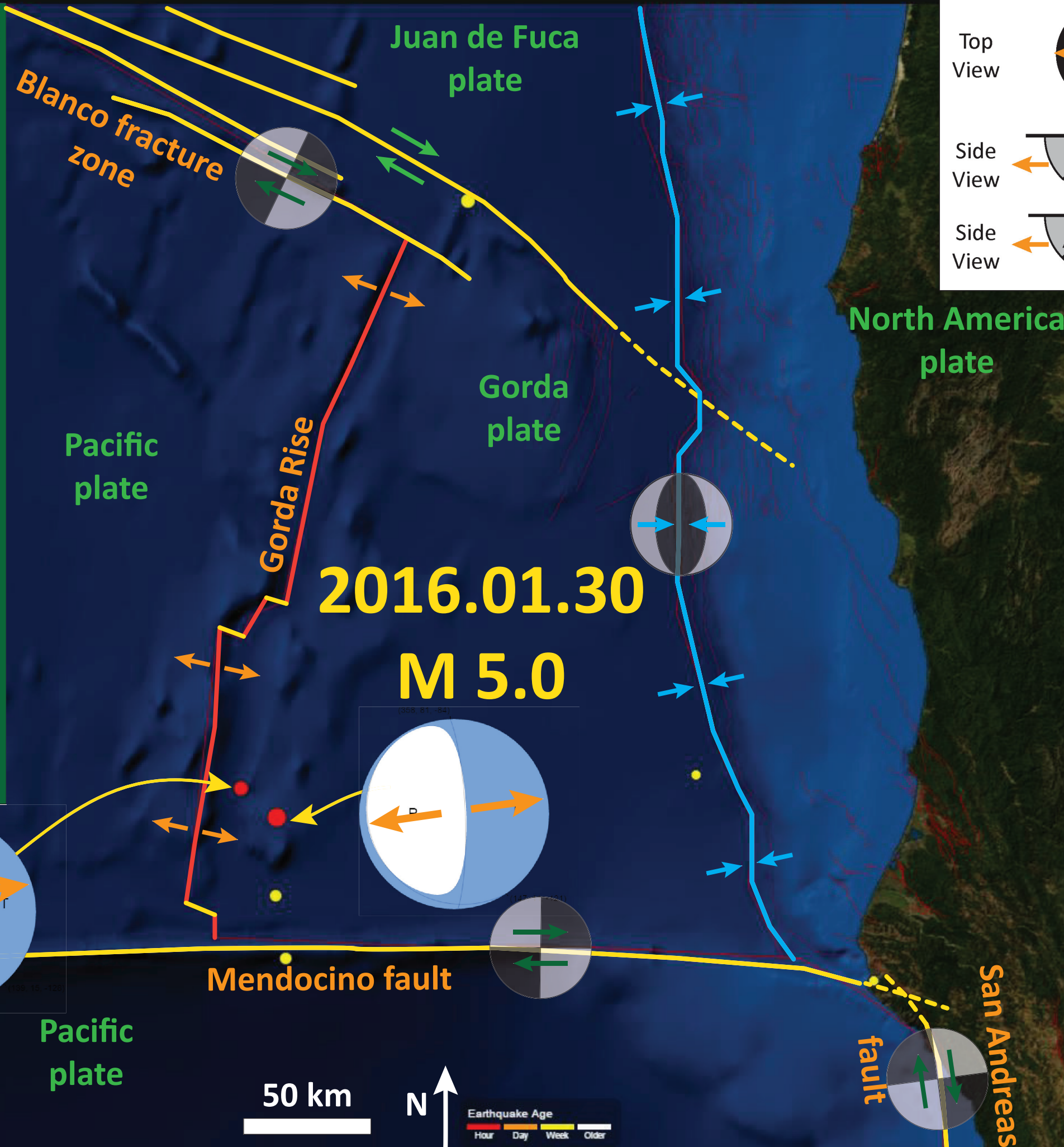


Figure 1. Tectonic configuration of the Gorda deformation zone and locations and source models for 1976-2010  $M \geq 5.9$  earthquakes. Letters designate chronological order of earthquakes (Table 1 and Appendix A). Plate motion vectors relative to the Pacific Plate (gray arrows in main diagram) are from Wilson [1989], with Cande and Kent's [1995] timescale correction.

