

M 7.5, HINDU KUSH REGION, AFGHANISTAN

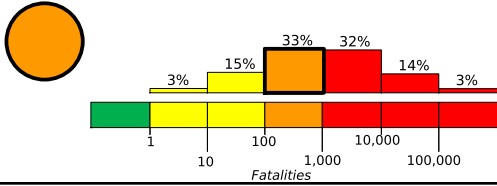
Origin Time: Mon 2015-10-26 09:09:32 UTC (13:39:32 local)

Location: 36.44°N 70.72°E Depth: 212 km

Created: 2 hours, 4 minutes after earthquake

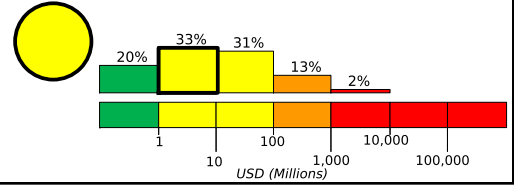
Estimated Fatalities

Orange alert level for shaking-related fatalities. Significant casualties are likely and the disaster is potentially widespread. Past events with this alert level have required a regional or national level response.



Yellow alert level for economic losses. Some damage is possible. Estimated economic losses are less than 1% of GDP of Afghanistan.

Estimated Economic Losses

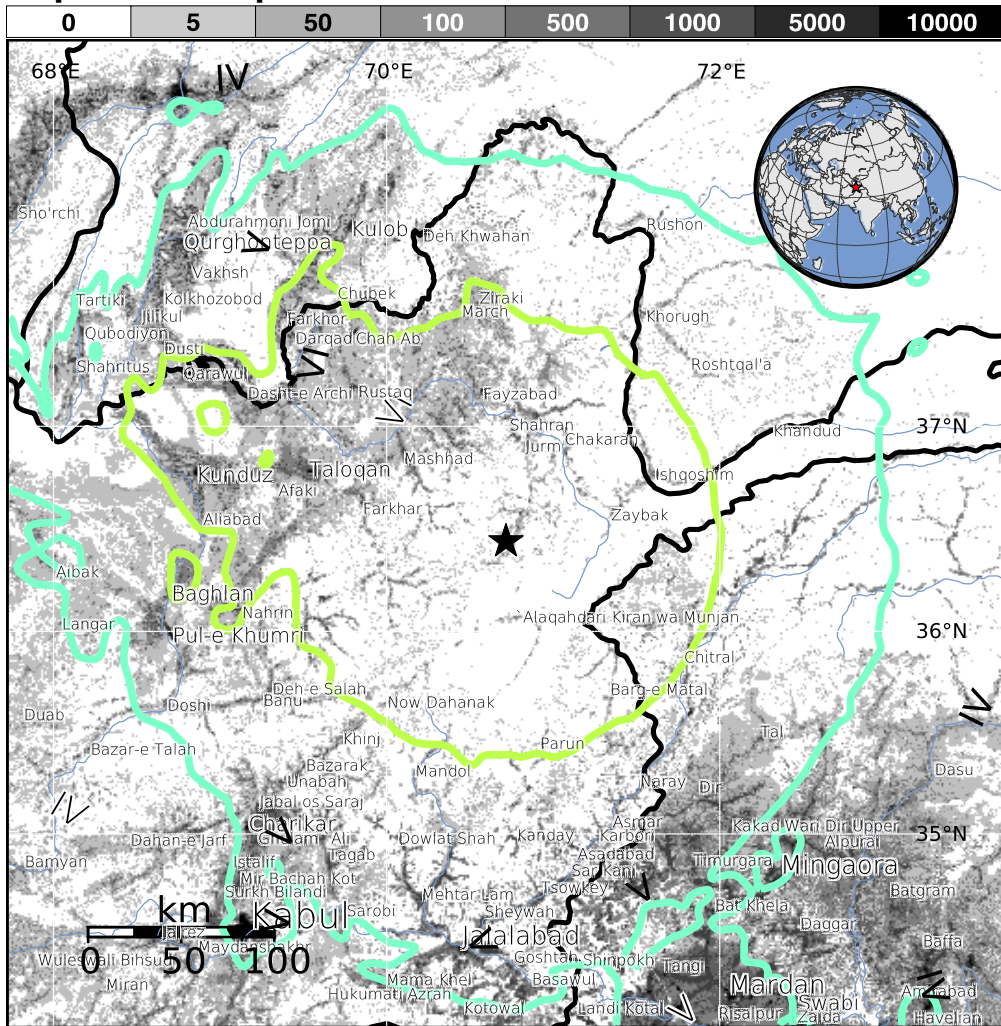


Estimated Population Exposed to Earthquake Shaking

ESTIMATED POPULATION EXPOSURE (k = x1000)	--*	--*	11,116k*	25,214k*	4,776k	160k	0	0	0	
ESTIMATED MODIFIED MERCALLI INTENSITY	I	II-III	IV	V	VI	VII	VIII	IX	X+	
PERCEIVED SHAKING	Not felt	Weak	Light	Moderate	Strong	Very Strong	Severe	Violent	Extreme	
POTENTIAL DAMAGE	Resistant Structures	none	none	none	V. Light	Light	Moderate	Moderate/Heavy	Heavy	V. Heavy
	Vulnerable Structures	none	none	none	Light	Moderate	Moderate/Heavy	Heavy	V. Heavy	V. Heavy

*Estimated exposure only includes population within the map area.

Population Exposure



Structures:

Overall, the population in this region resides in structures that are highly vulnerable to earthquake shaking, though some resistant structures exist. The predominant vulnerable building types are adobe block and unreinforced brick with timber floor construction.

Historical Earthquakes (with MMI levels):

Date (UTC)	Dist. (km)	Mag.	Max MMI(#)	Shaking Deaths
1985-07-29	36	7.4	VII(454k)	5
1998-02-04	90	5.9	VIII(3k)	2k
1998-05-30	93	6.5	VII(715k)	4k

Recent earthquakes in this area have caused secondary hazards such as landslides and liquefaction that might have contributed to losses.

Selected City Exposure

from GeoNames.org

MMI City	Population
VII Mashhad	< 1k
VII Jurm	12k
VII Shahrnan	< 1k
VII Baharak	< 1k
VII Taloqan	64k
VI Kalafgan	< 1k
VI Kunduz	162k
V Qurghontepa	65k
V Jalalabad	200k
V Kabul	3,044k
V Dushanbe	543k

bold cities appear on map

(k = x1000)

PAGER content is automatically generated, and only considers losses due to structural damage. Limitations of input data, shaking estimates, and loss models may add uncertainty.

<http://earthquake.usgs.gov/pager>

Event ID: us10003re5