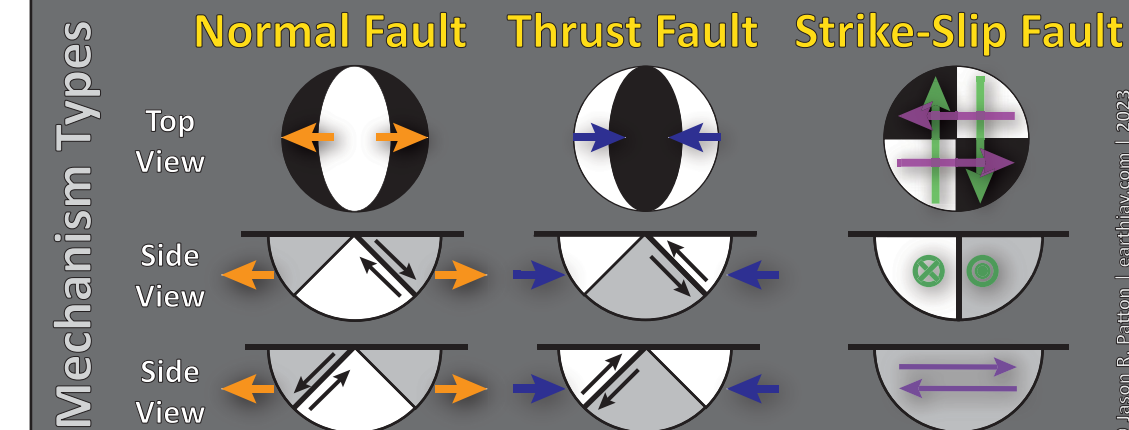
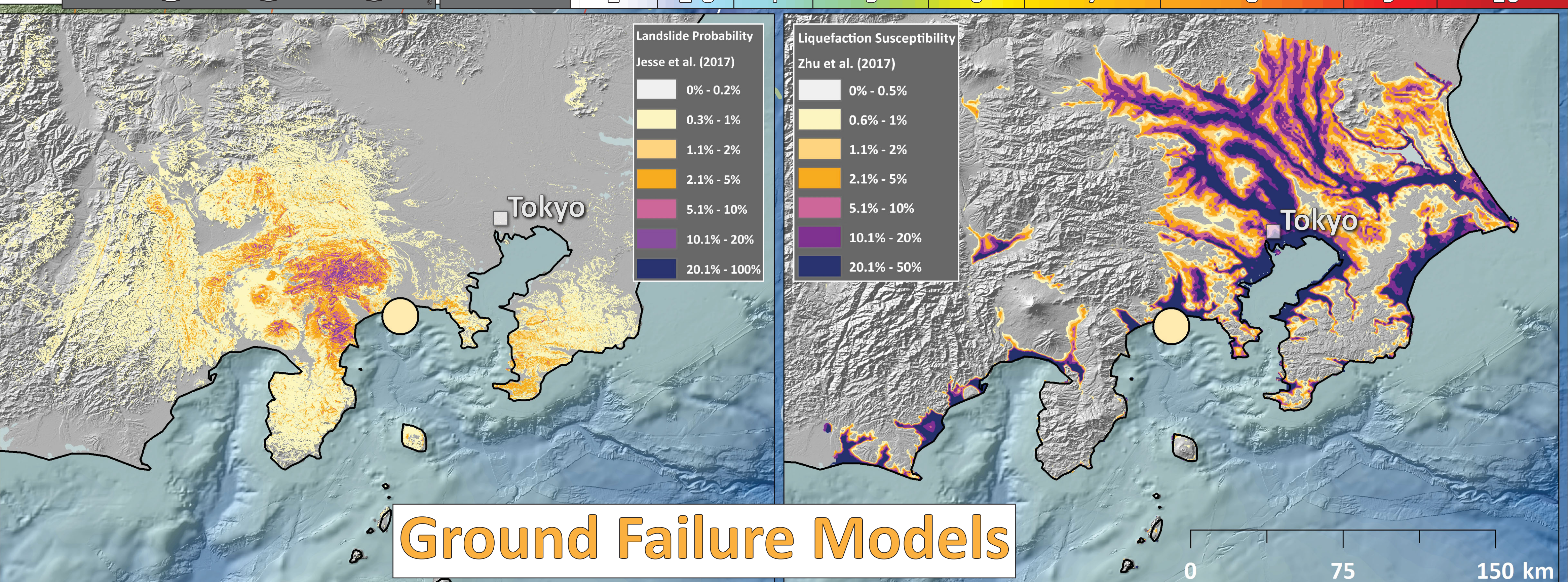
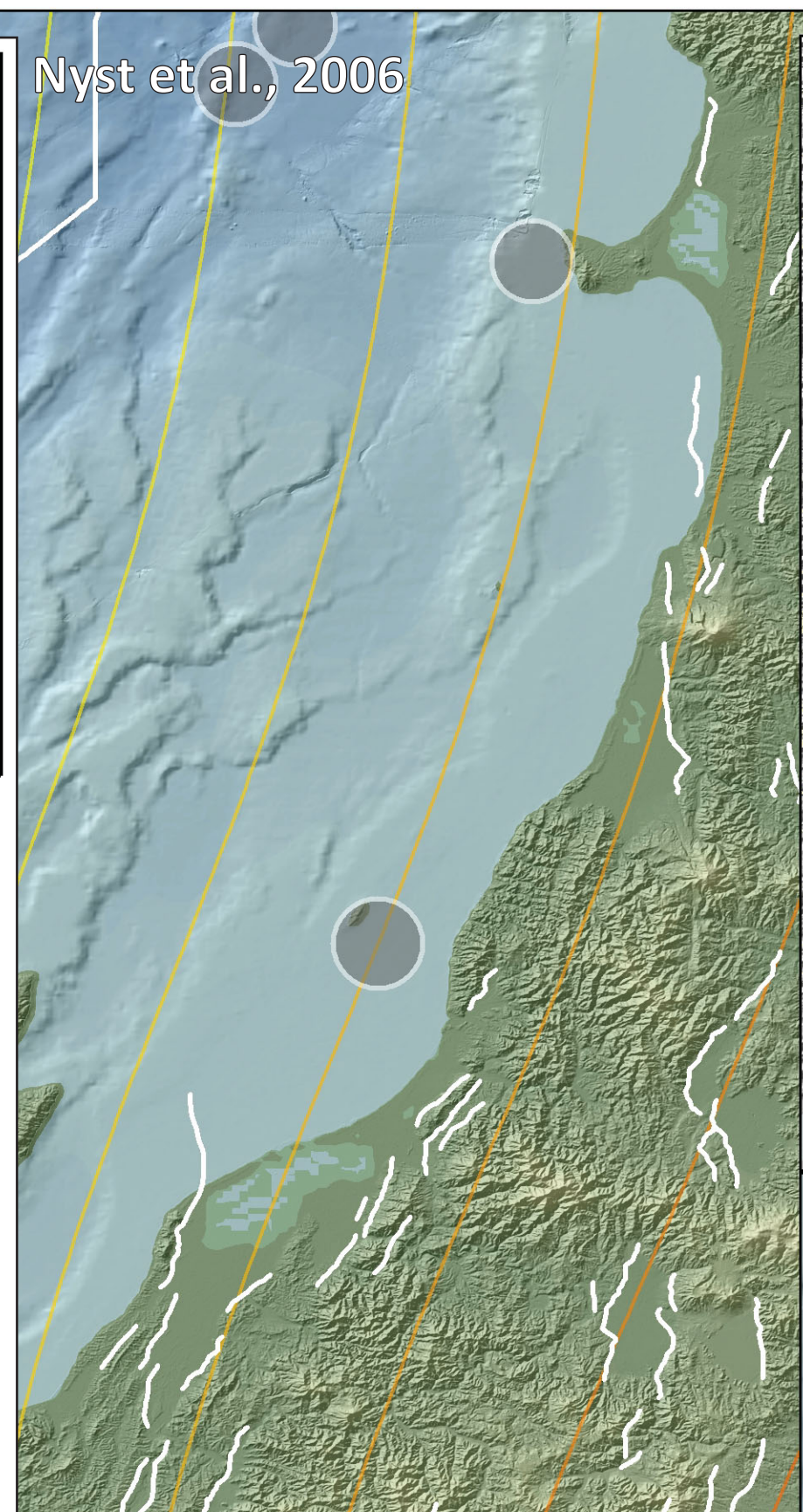
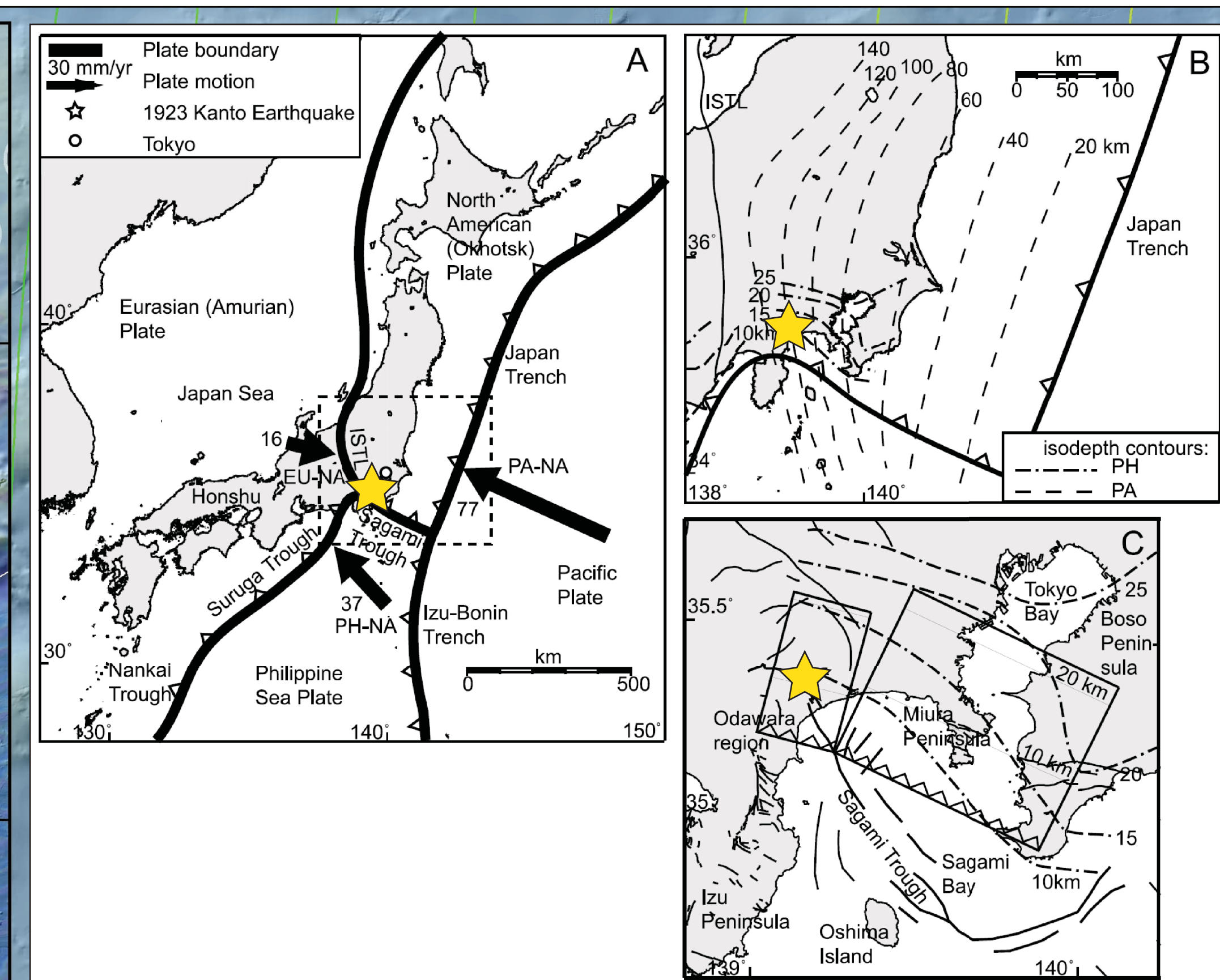
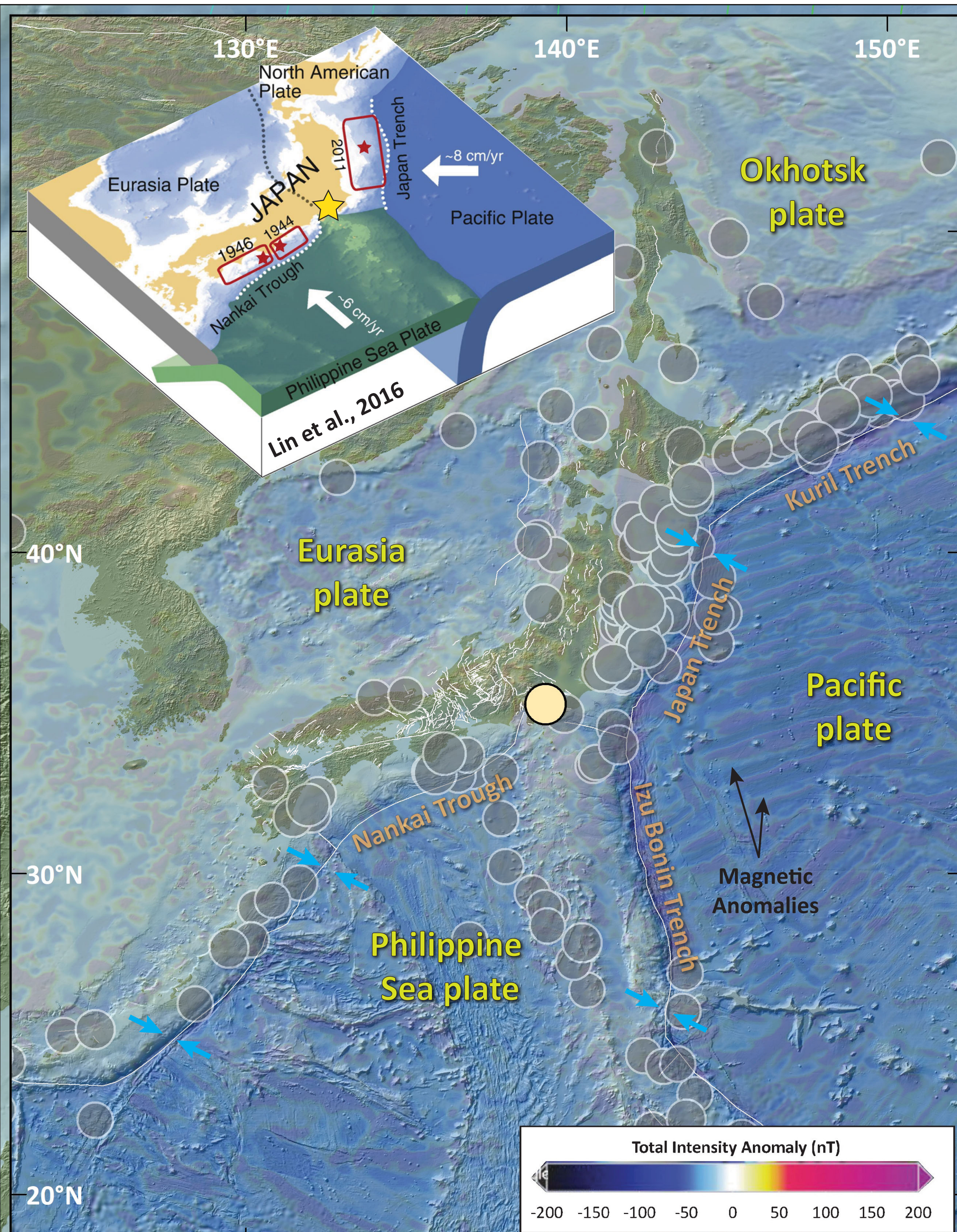


Earthquake Report: 1923.09.01

M 8.0 Kantō, Japan (& USGS Seismicity 1923-2023 M ≥ 7.0)



SHAKING	Not Felt	Weak	Light	Moderate	Strong	Very Strong	Severe	Violent	Extreme
DAMAGE	Note	None	None	Very Light	Light	Moderate	Moderate/Heavy	Heavy	Very Heavy
PGA (%g)	<0.05	0.3	2.76	6.2	11.5	21.5	40.1	74.7	>139
PGV (cm/s)	<0.02	0.13	1.41	4.65	9.64	20	41.4	85.8	>178
INTENSITY	1	2-3	4	5	6	7	8	9	10



Ground Failure Models

Seismicity (USGS - 1 century) magnitude

- 7.0 - 7.5
- 7.6 - 8.0
- 8.1 - 8.5
- 8.6 - 9.1

Seismicity (USGS - 3 month) magnitude

- 5.8 - 6.0
- 6.1 - 6.5
- 6.6 - 7.0
- 7.1 - 7.5
- 7.6 - 8.0

11 March 2011 M 9.0 Aftershock Region

Fault

GEM

Topography: Ryan et al., 2009 doi:10.1029/2008GC002332.

Depth to Slab (km)

Jason R. Patton earthjay.com © 2023

USGS science for a changing world

