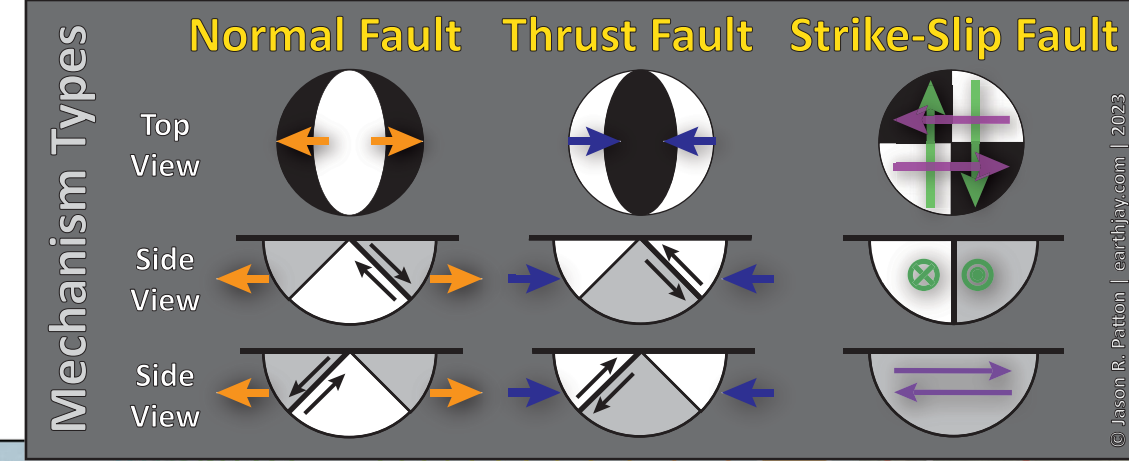
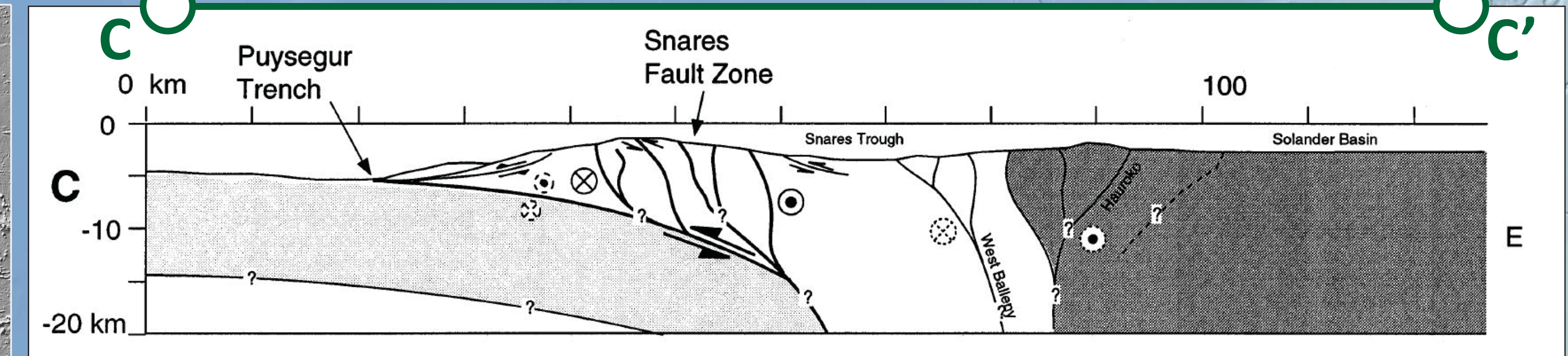
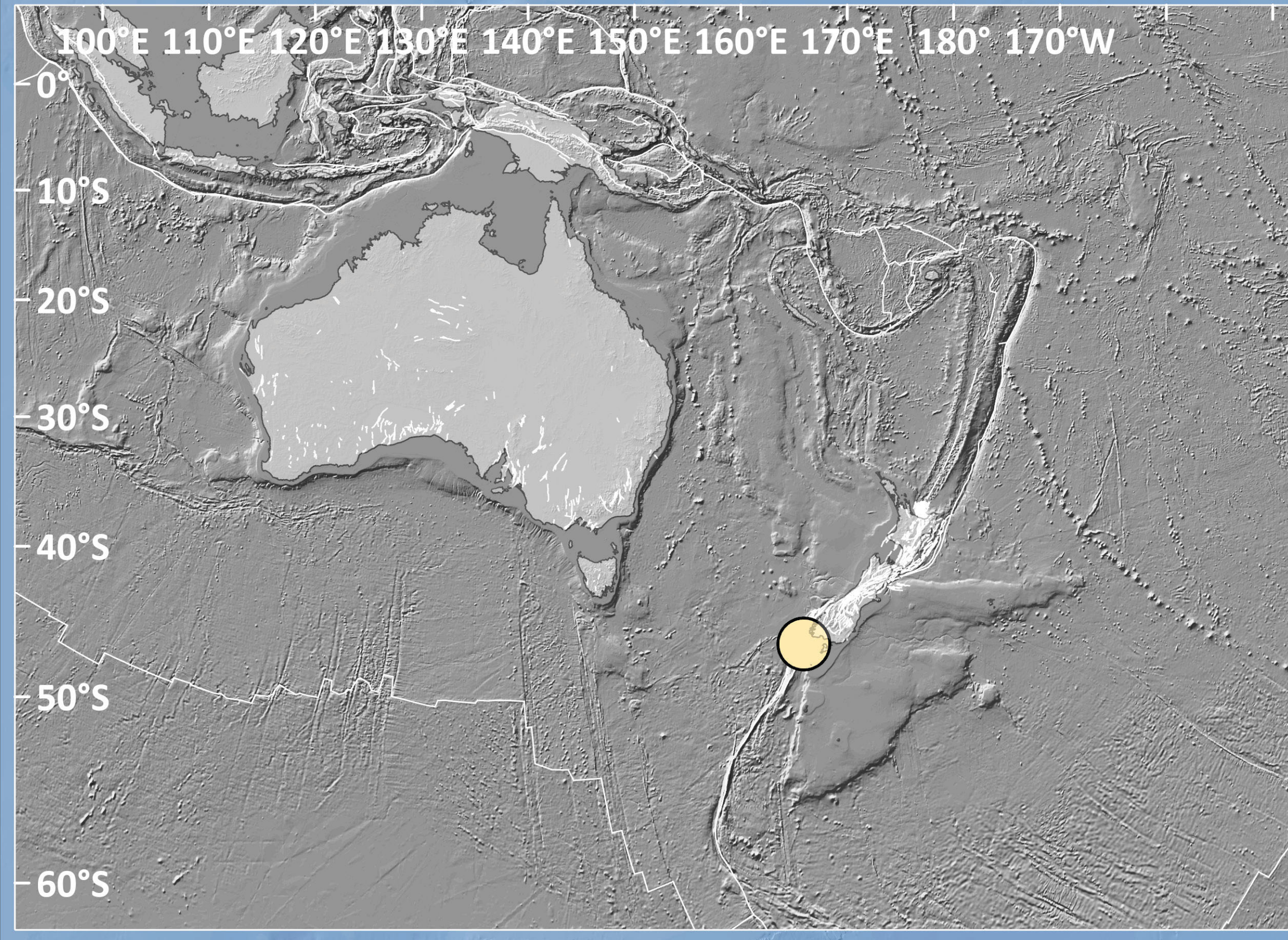


# Earthquake Report: 2025.01.08

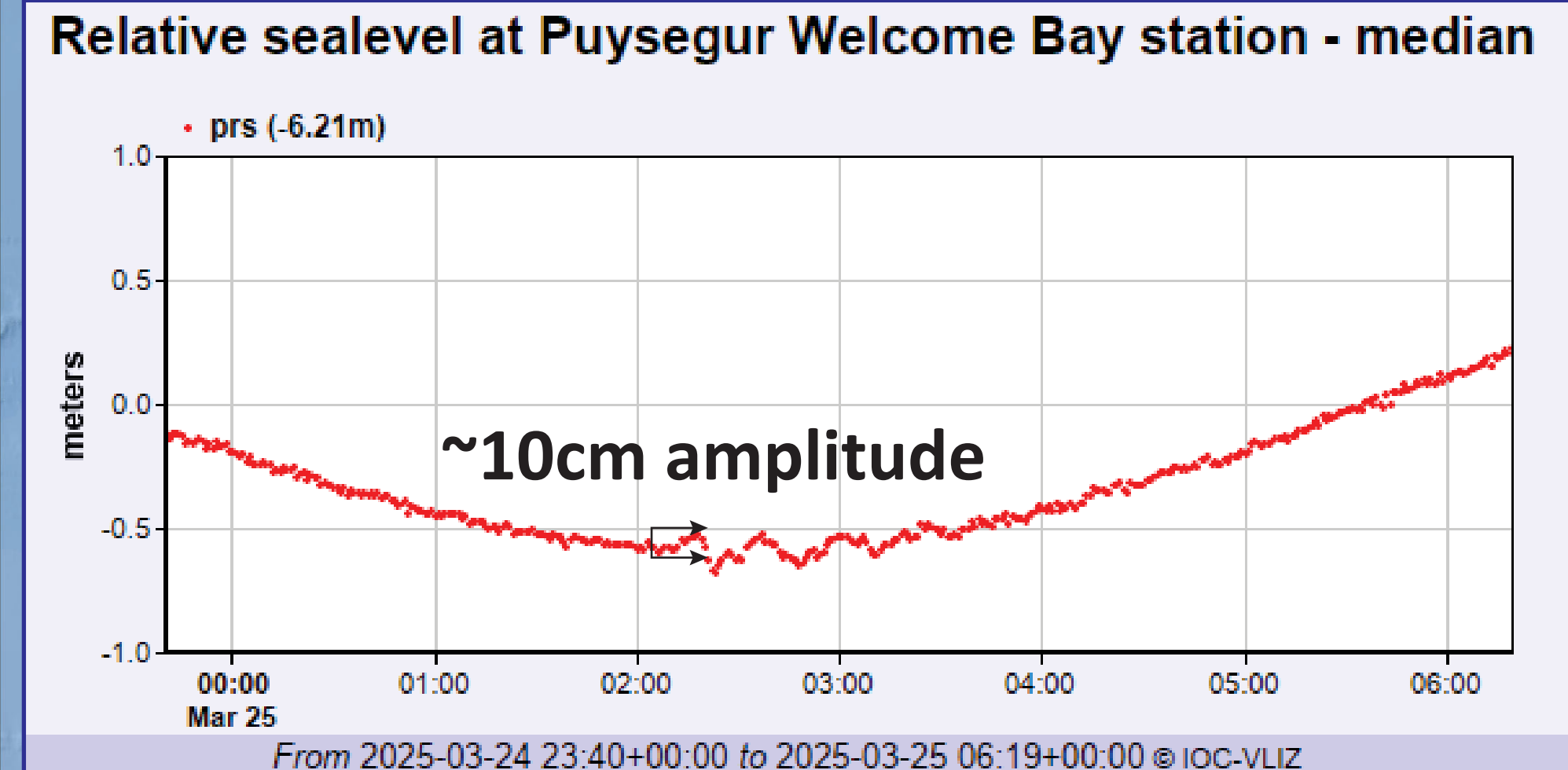
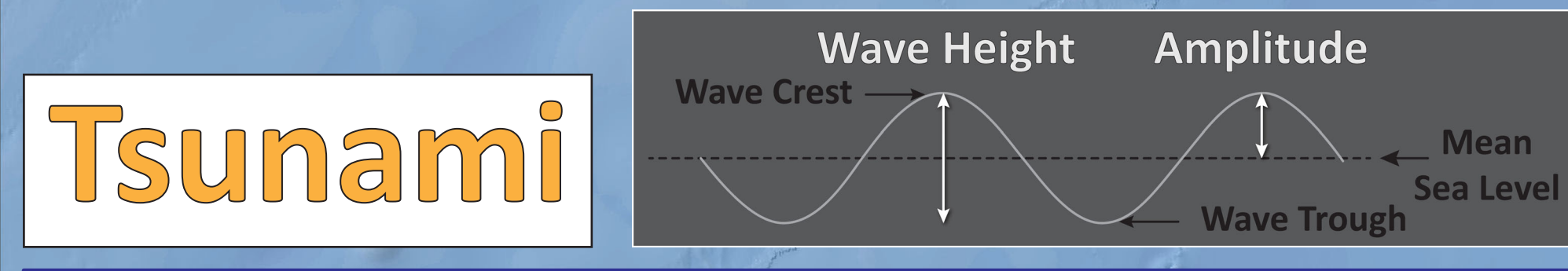
## M 7.0 Vanuatu (& USGS Seismicity 1925-2025 M ≥ 7.0)



SHAKING	Not Felt	Weak	Light	Moderate	Strong	Very Strong	Severe	Violent	Extreme
DAMAGE	Note	None	None	Very Light	Light	Moderate	Moderate/Heavy	Heavy	Very Heavy
PGA (%g)	<0.05	0.3	2.76	6.2	11.5	21.5	40.1	74.7	>139
PGV (cm/s)	<0.02	0.13	1.41	4.65	9.64	20	41.4	85.8	>178
INTENSITY	1	2-3	4	5	6	7	8	9	10



Lamarche & Lebrun, 2000



**Seismicity (USGS - 1 century)**

**Seismicity (USGS - 1 month)**

**mag**

- 0.1 - 1.0
- 1.1 - 2.0
- 2.1 - 3.0
- 3.1 - 4.0
- 4.1 - 5.0
- 5.1 - 6.0
- 6.1 - 7.3

**mag**

- 6.0 - 7.0
- 7.1 - 8.0
- 8.1 - 9.1

**Sea Level Sensor**

**Fault**

- (GEM)
- Populated Place

**Elevation**

High

Low

**Depth**

Shallow

Deep

Topography: Ryan et al., 2009  
doi:10.1029/2008GC002332.  
eorc.jaxa.jp/ALOS/en/aw3d30

**Depth to Slab (km)**

0 50 100 Miles

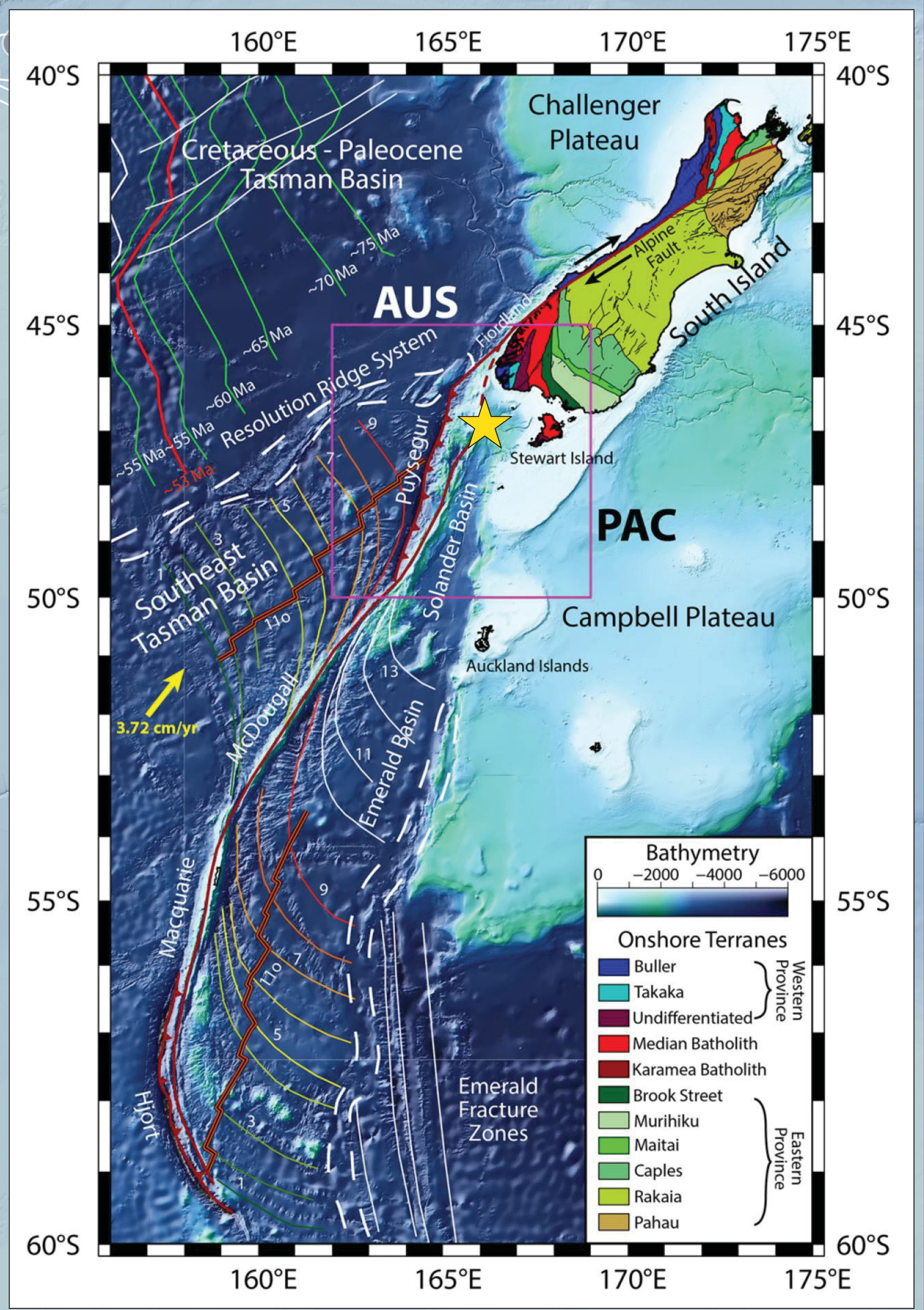
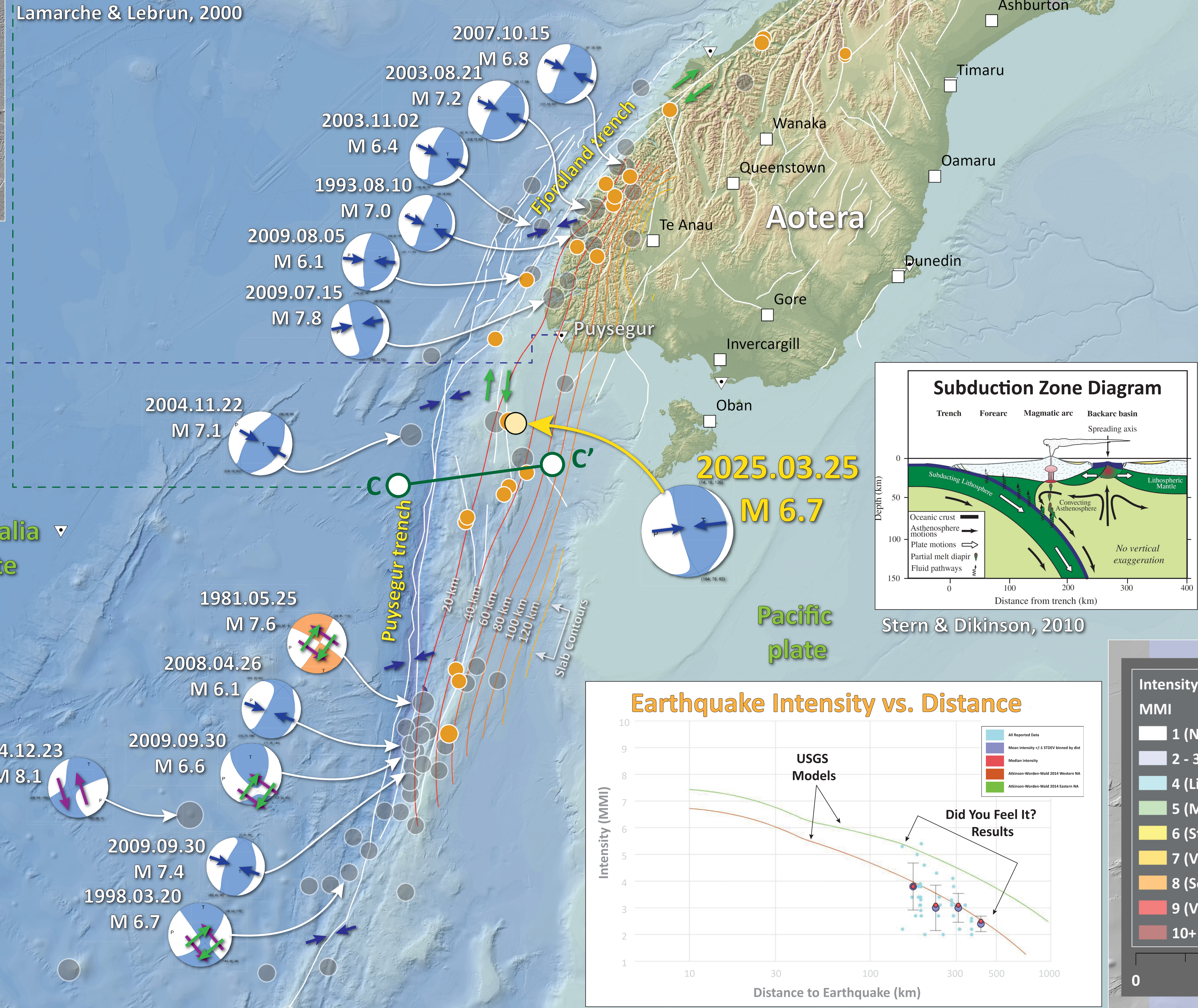
0 75 150 Kilometers

**Natural Earth**

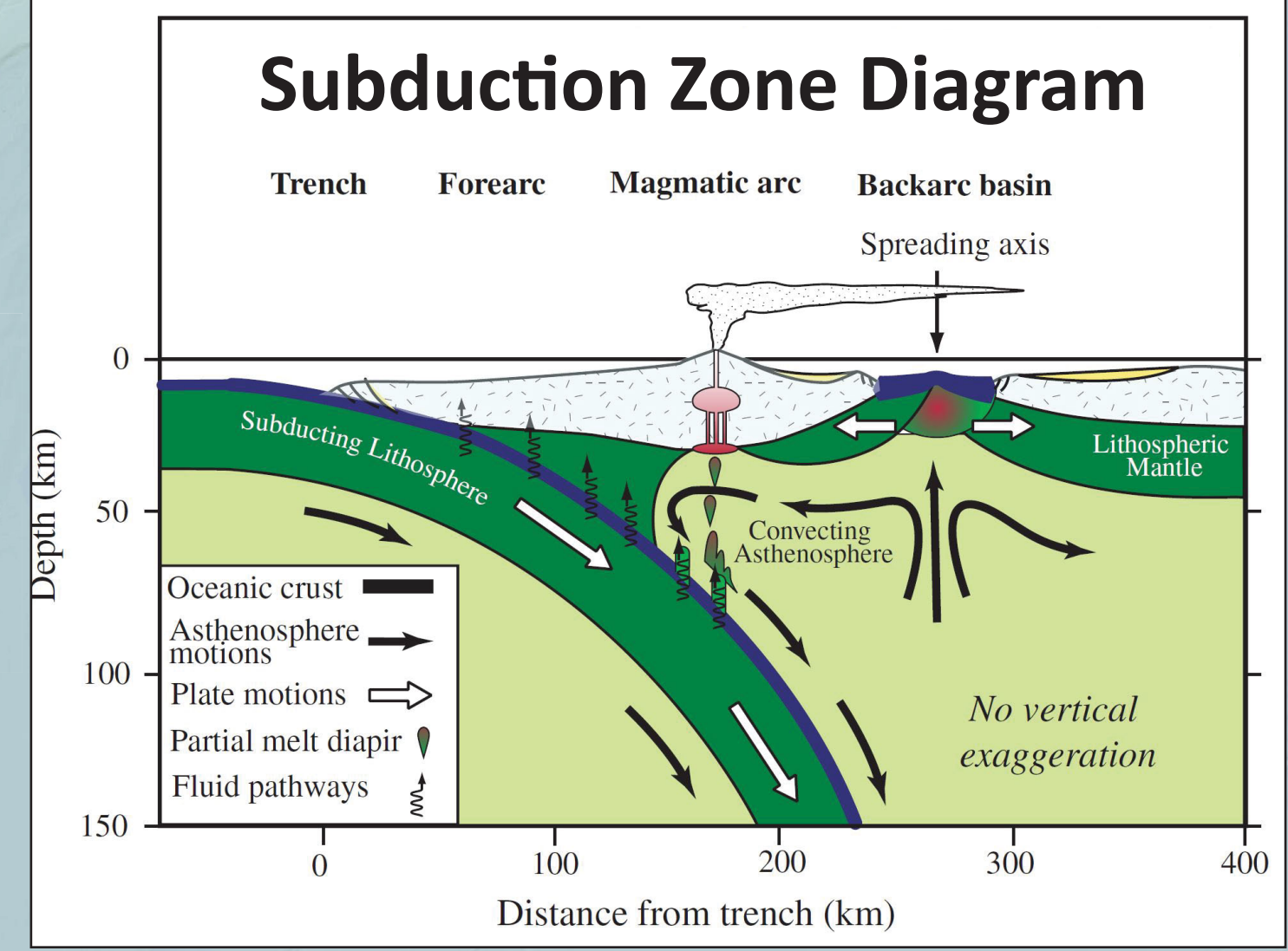
**GEM**  
GLOBAL EARTHQUAKE MODEL  
working together to assess risk

Jason R. Patton  
earthjay.com © 2025

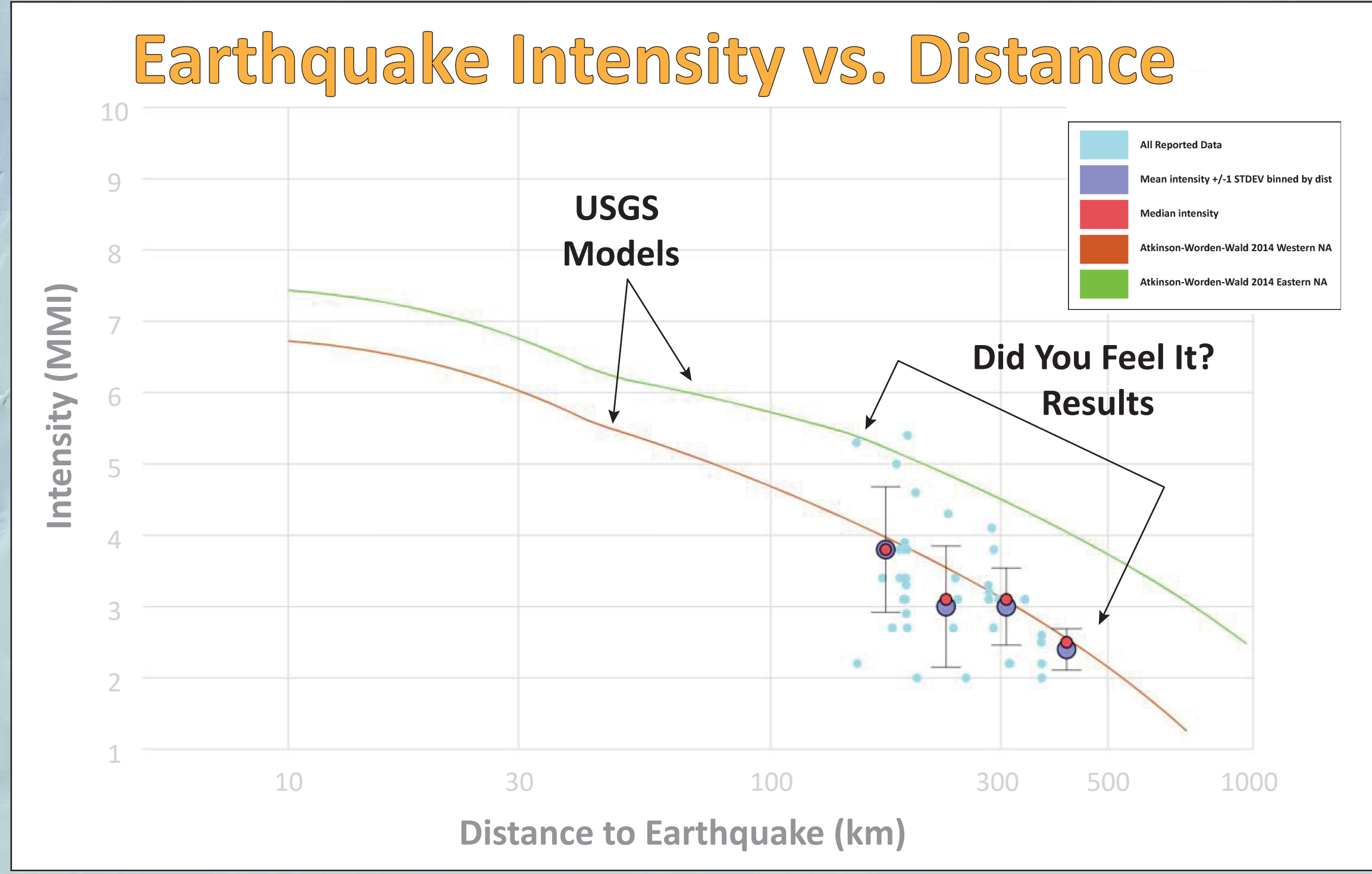
**USGS**  
science for a changing world



Shuck et al., 2021



Stern & Dickinson, 2010



**Intensity (USGS)**

**MMI**

- 1 (Not Felt)
- 2 - 3 (Weak)
- 4 (Light)
- 5 (Moderate)
- 6 (Strong)
- 7 (Very Strong)
- 8 (Severe)
- 9 (Violent)
- 10+ (Extreme)

