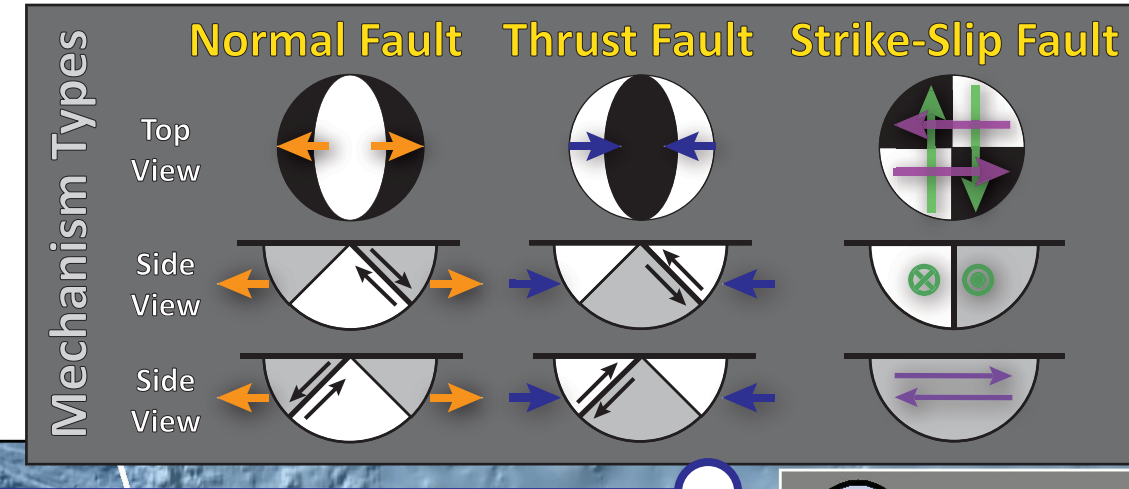
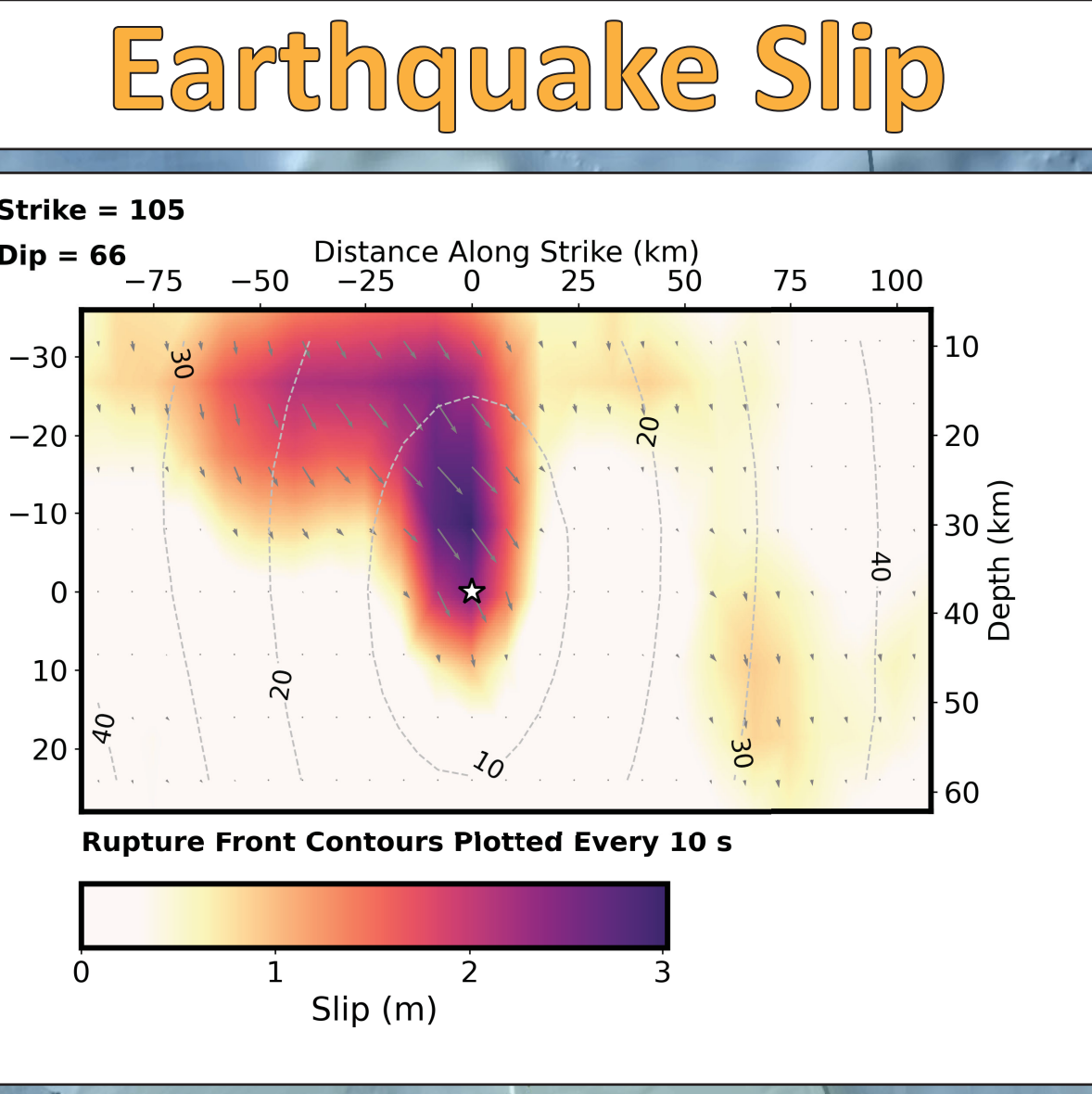
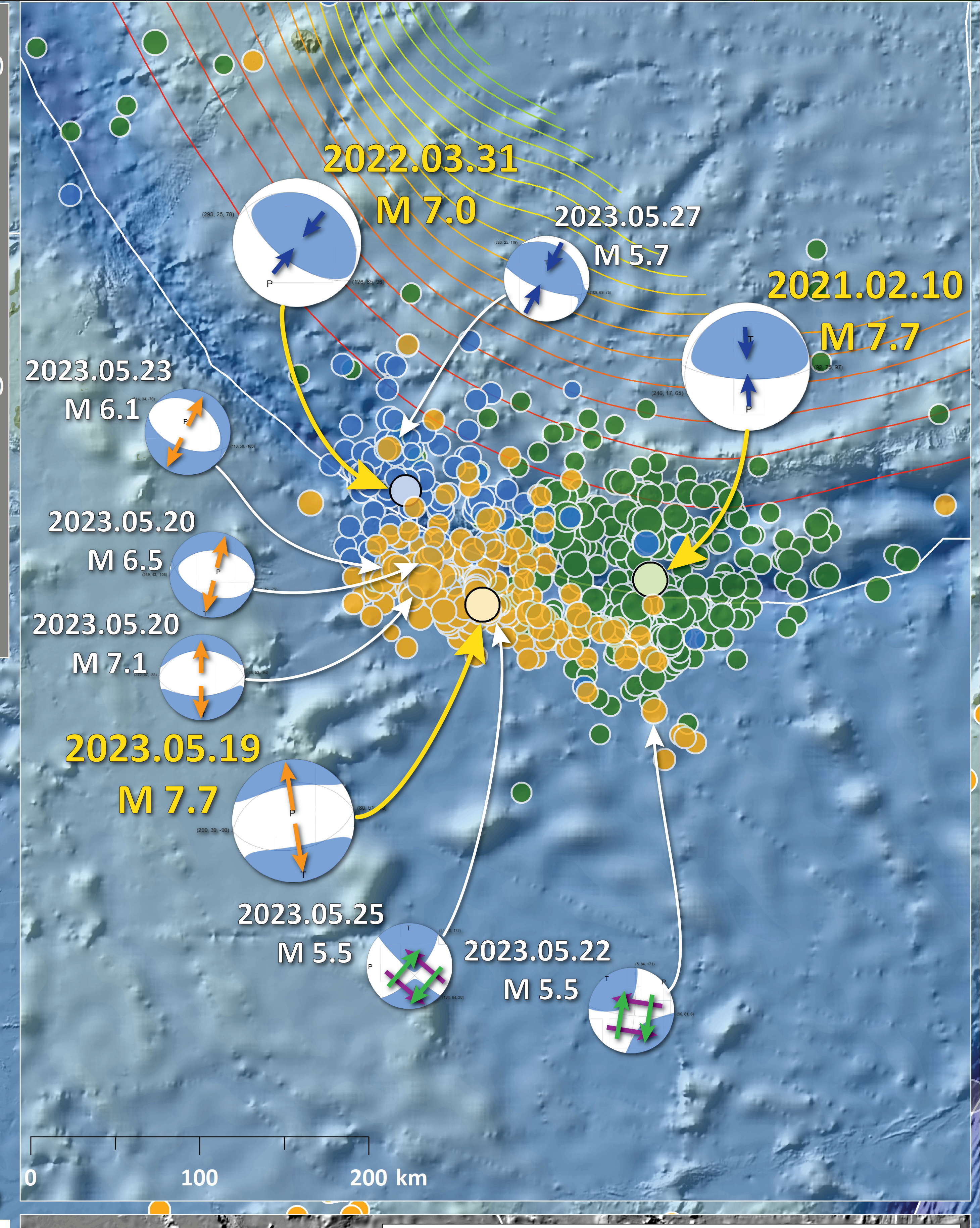
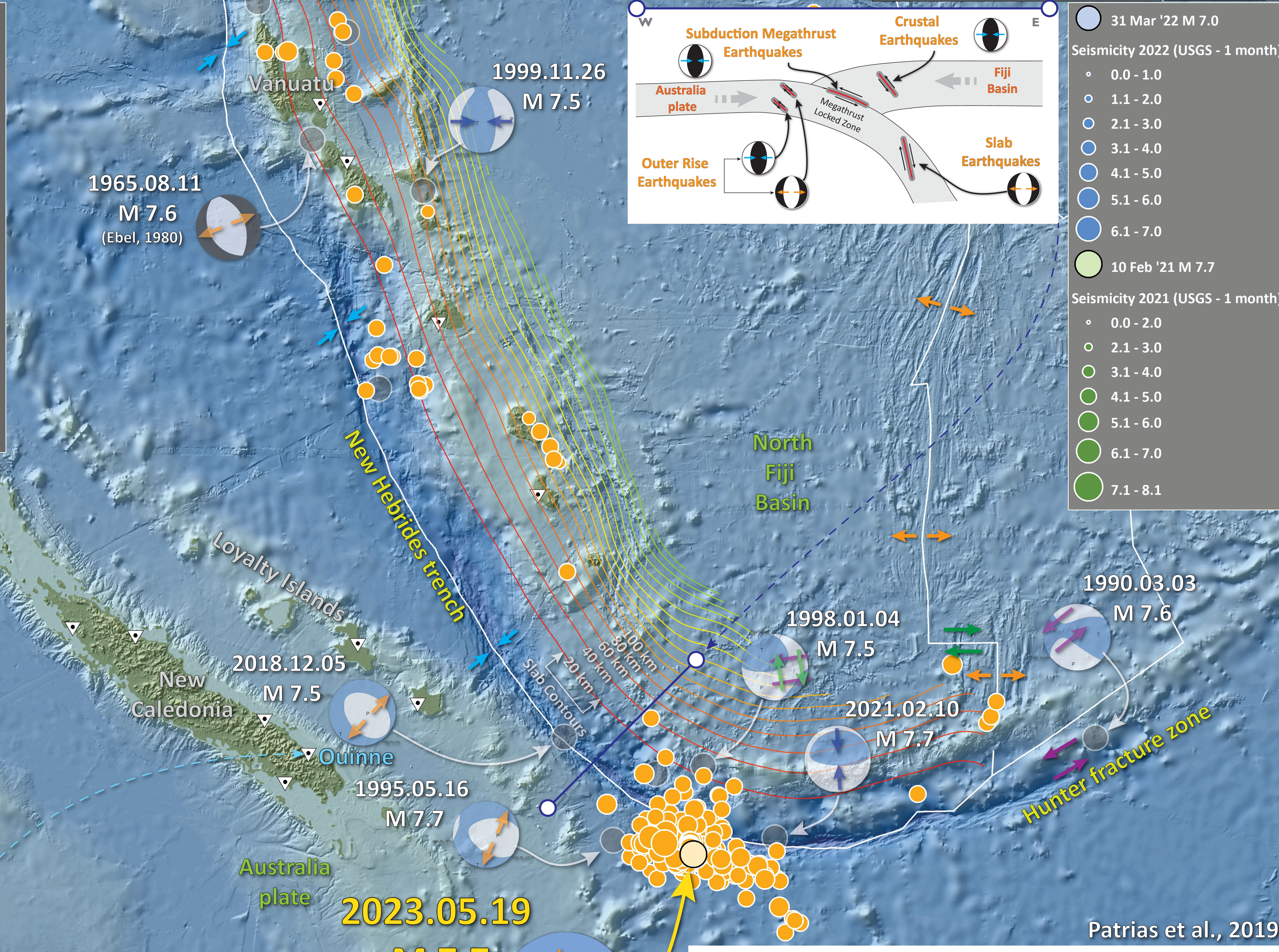
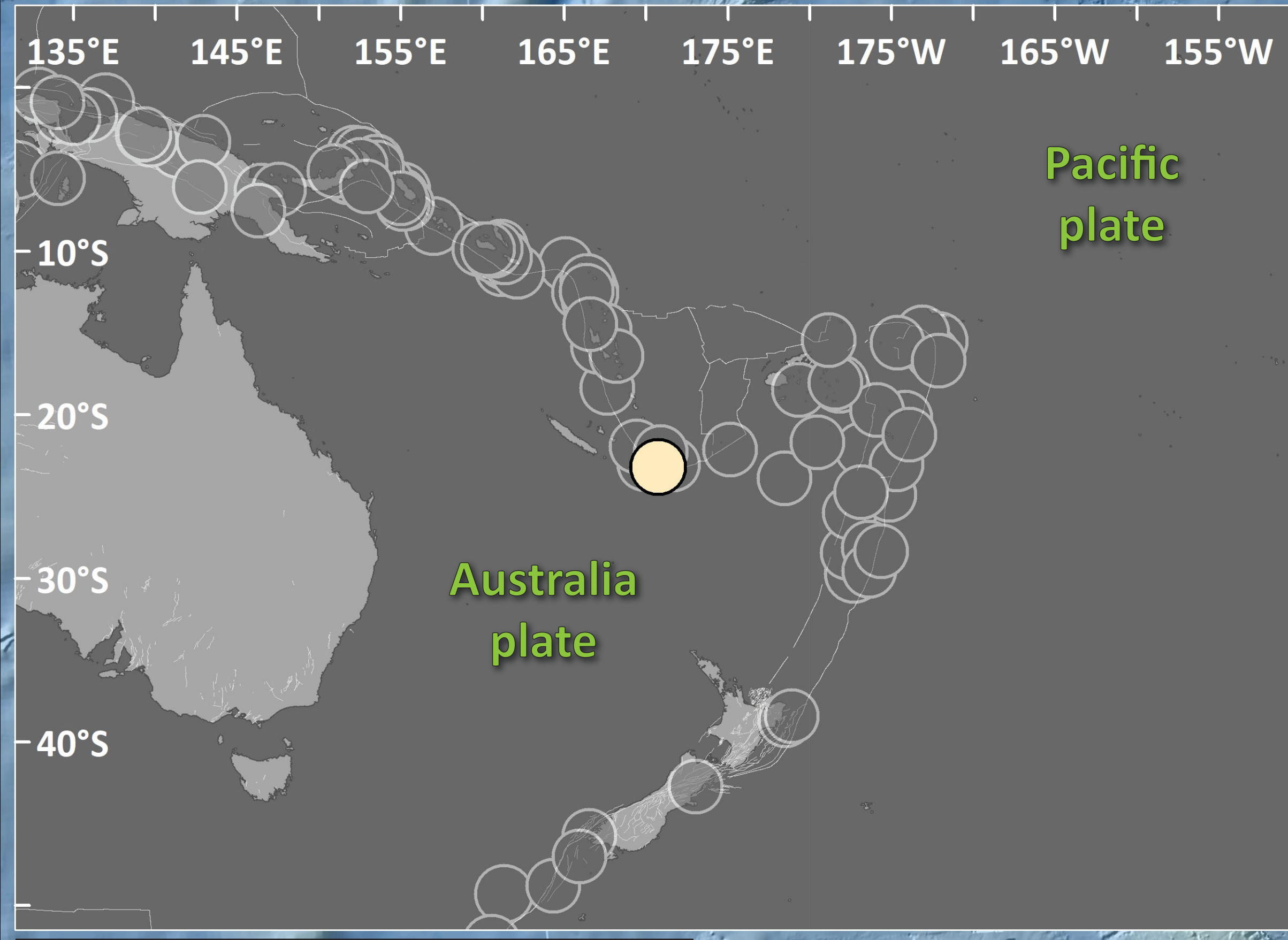


# Earthquake Report: 2023.05.19

## M 7.7 Loyalty Islands (& USGS Seismicity 1923-2023 M ≥ 7.5)

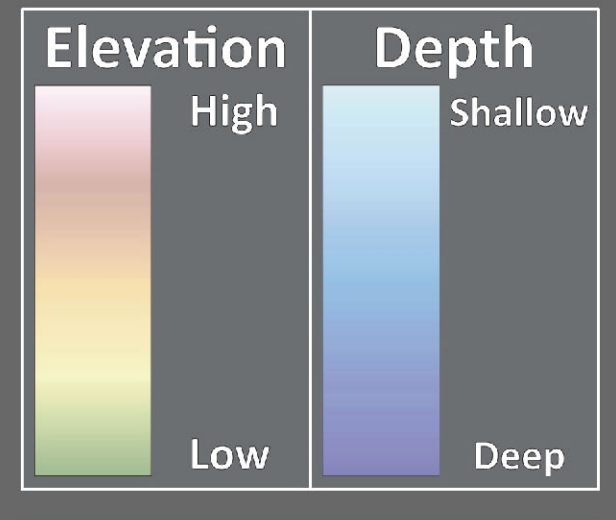


	Not Felt	Weak	Light	Moderate	Strong	Very Strong	Severe	Violent	Extreme
DAMAGE	Note	None	None	Very Light	Light	Moderate	Moderate/Heavy	Heavy	Very Heavy
PGA (%g)	<0.05	0.3	2.76	6.2	11.5	21.5	40.1	74.7	>139
PGV (cm/s)	<0.02	0.13	1.41	4.65	9.64	20	41.4	85.8	>178
INTENSITY	1	2-3	4	5	6	7	8	9	10



● 19 May '23 M7.7  
 Seismicity (USGS - 1 month)  
 mag  
 ● 0.0 - 1.0  
 ● 1.1 - 2.0  
 ● 2.1 - 3.0  
 ● 3.1 - 4.0  
 ● 4.1 - 5.0  
 ● 5.1 - 6.0  
 ● 6.1 - 7.0  
 ● 7.1 - 7.7

▽ Sea Level Sensor  
 Fault (GEM)  
 Seismicity (USGS - 1 century)  
 mag  
 ● 7.5 - 8.0  
 ● 8.1 - 8.5  
 ● 8.6 - 9.0  
 ● 9.1 - 9.5



Topography: Ryan et al., 2009  
 doi:10.1029/2008GC002332.  
 eorc.jaxa.jp/ALOS/en/aw3d30

Depth to Slab (km)  
 0 50 100 150 200 250 300 350 400 450 500 550 600 650 700

Jason R. Patton  
 earthjay.com © 2023

science for a changing world

### Tsunami

