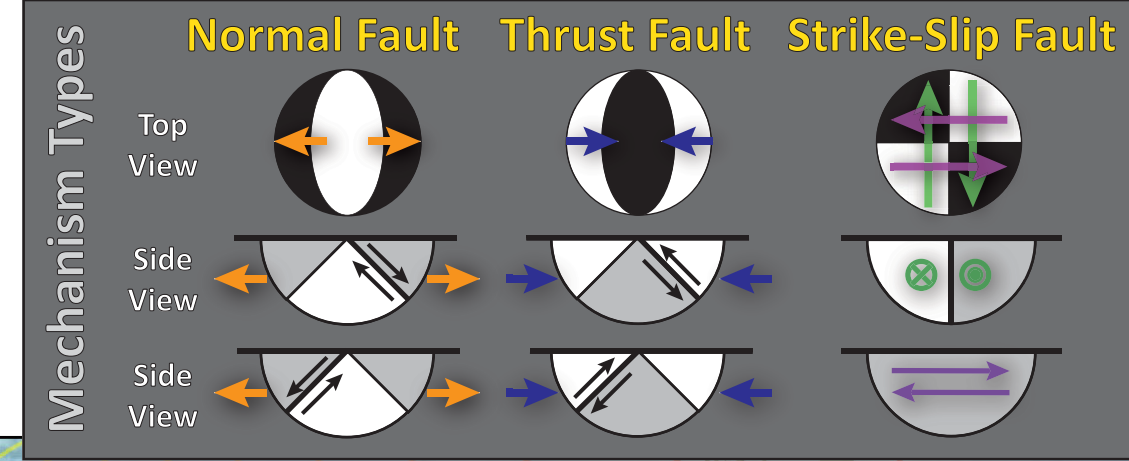
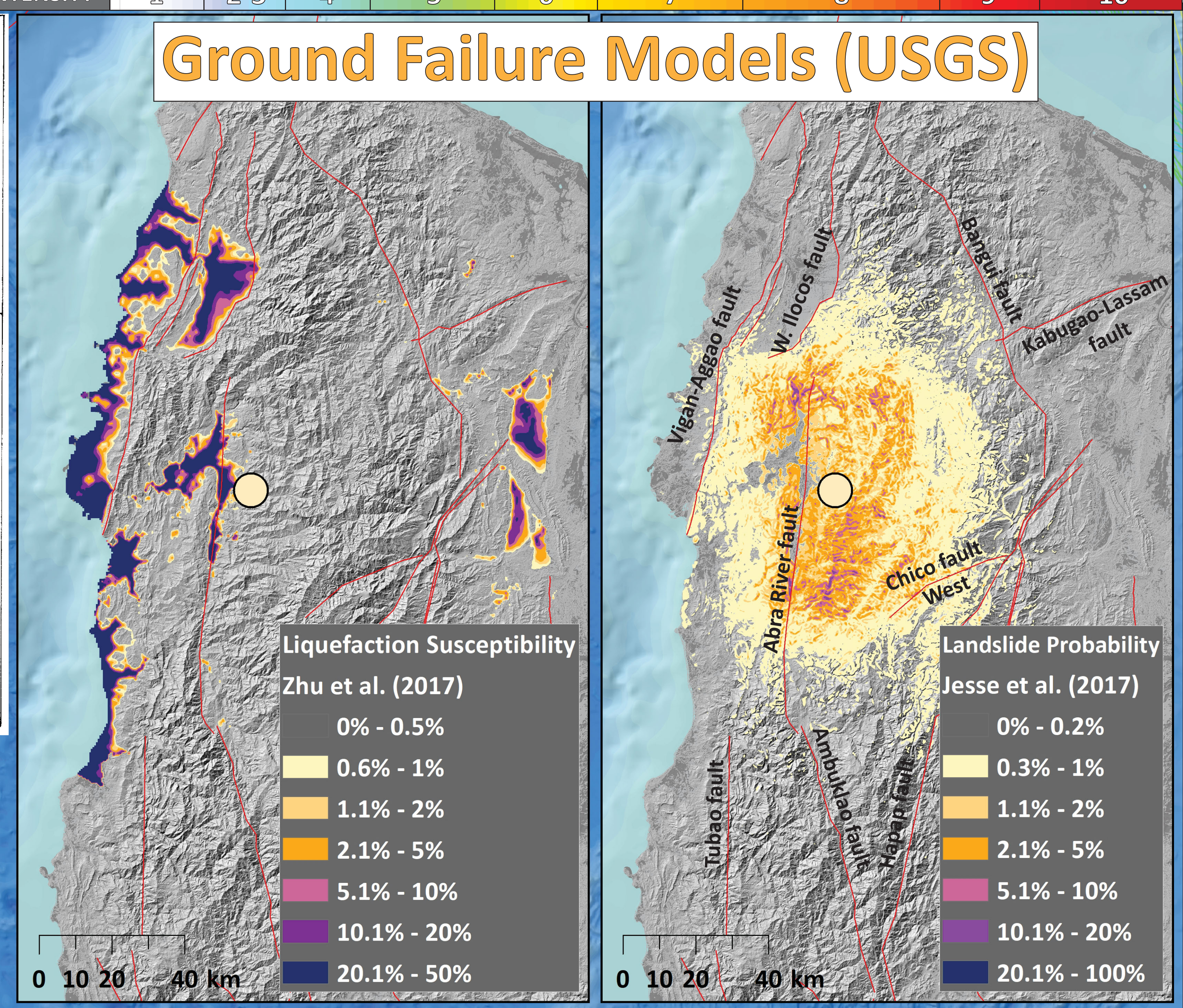
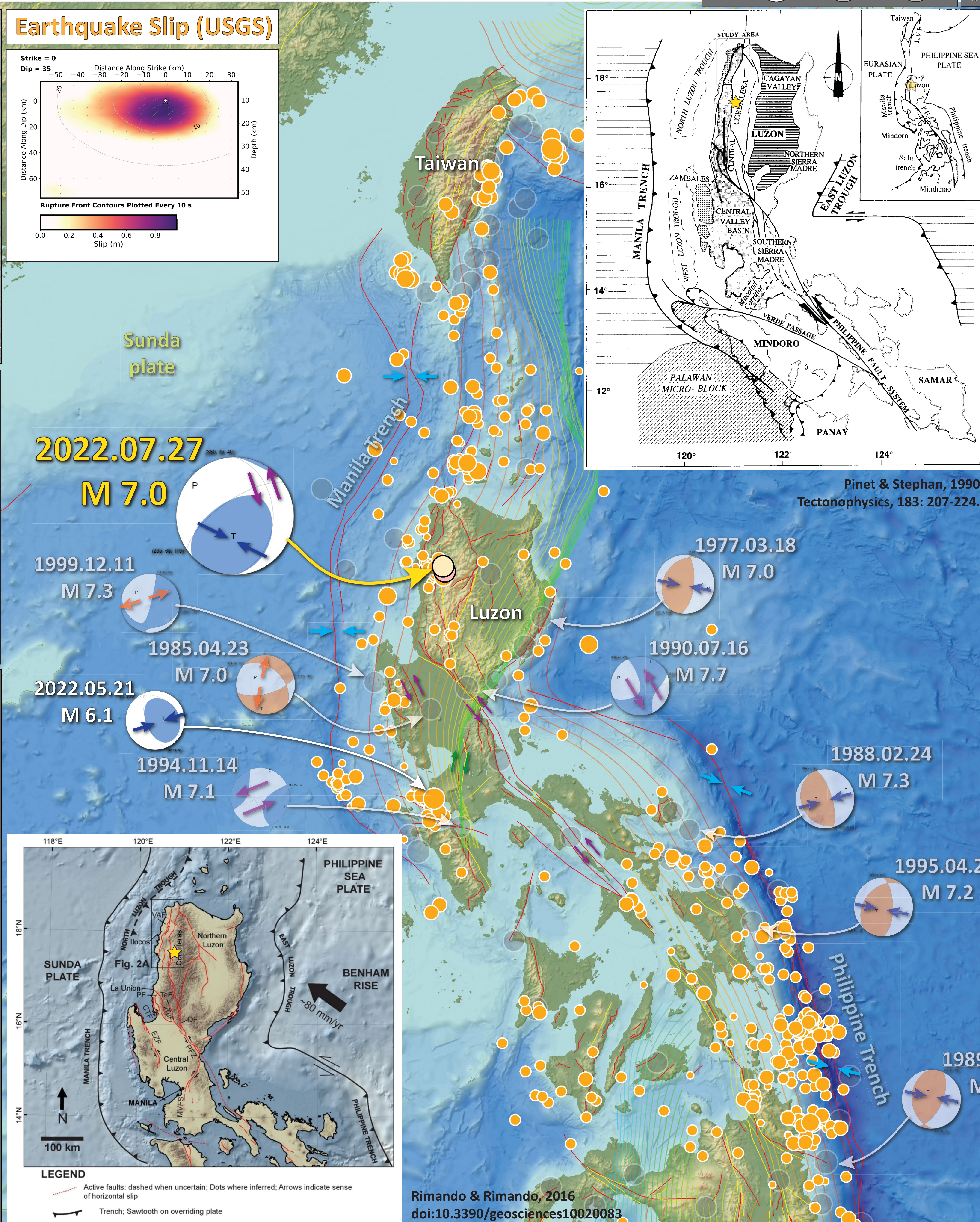
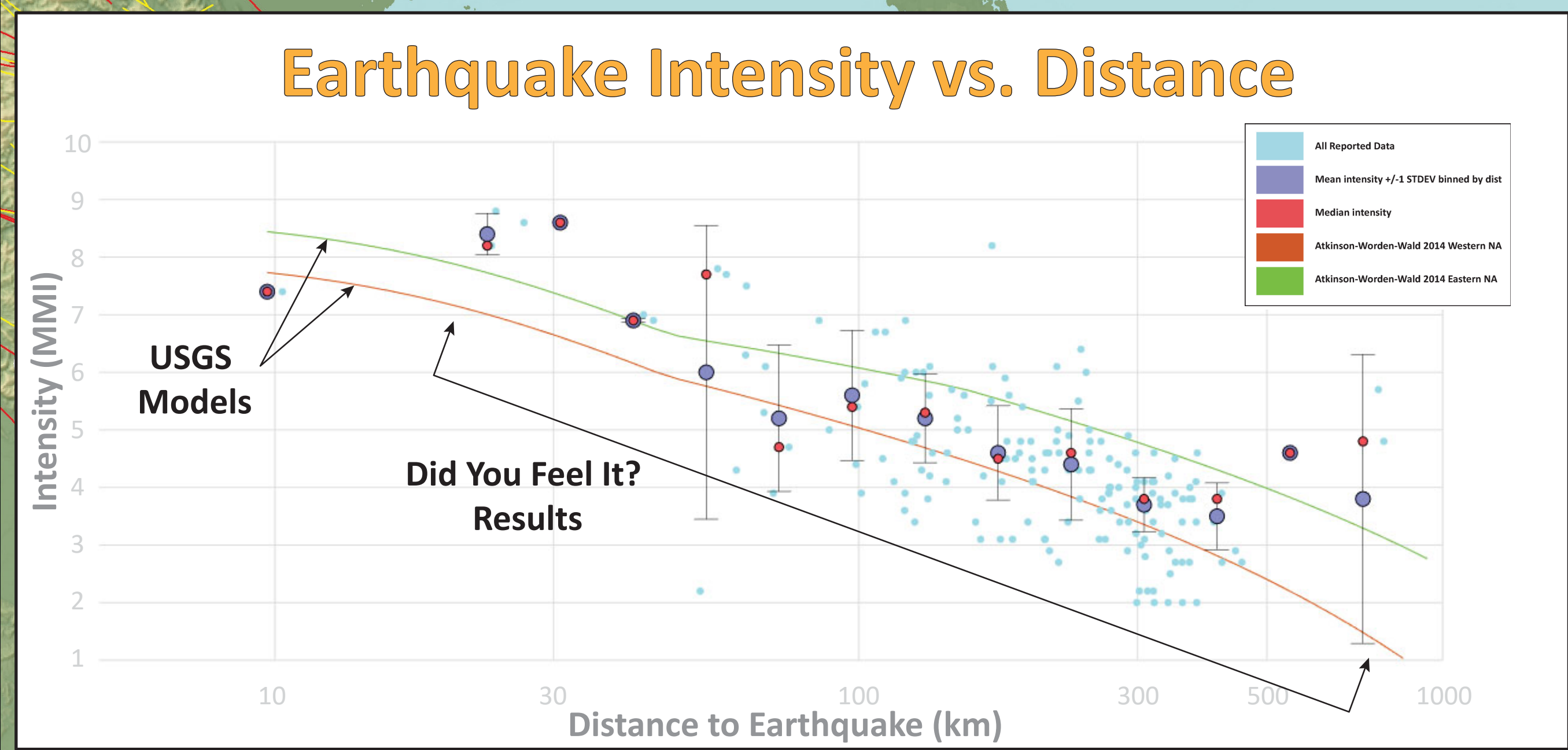
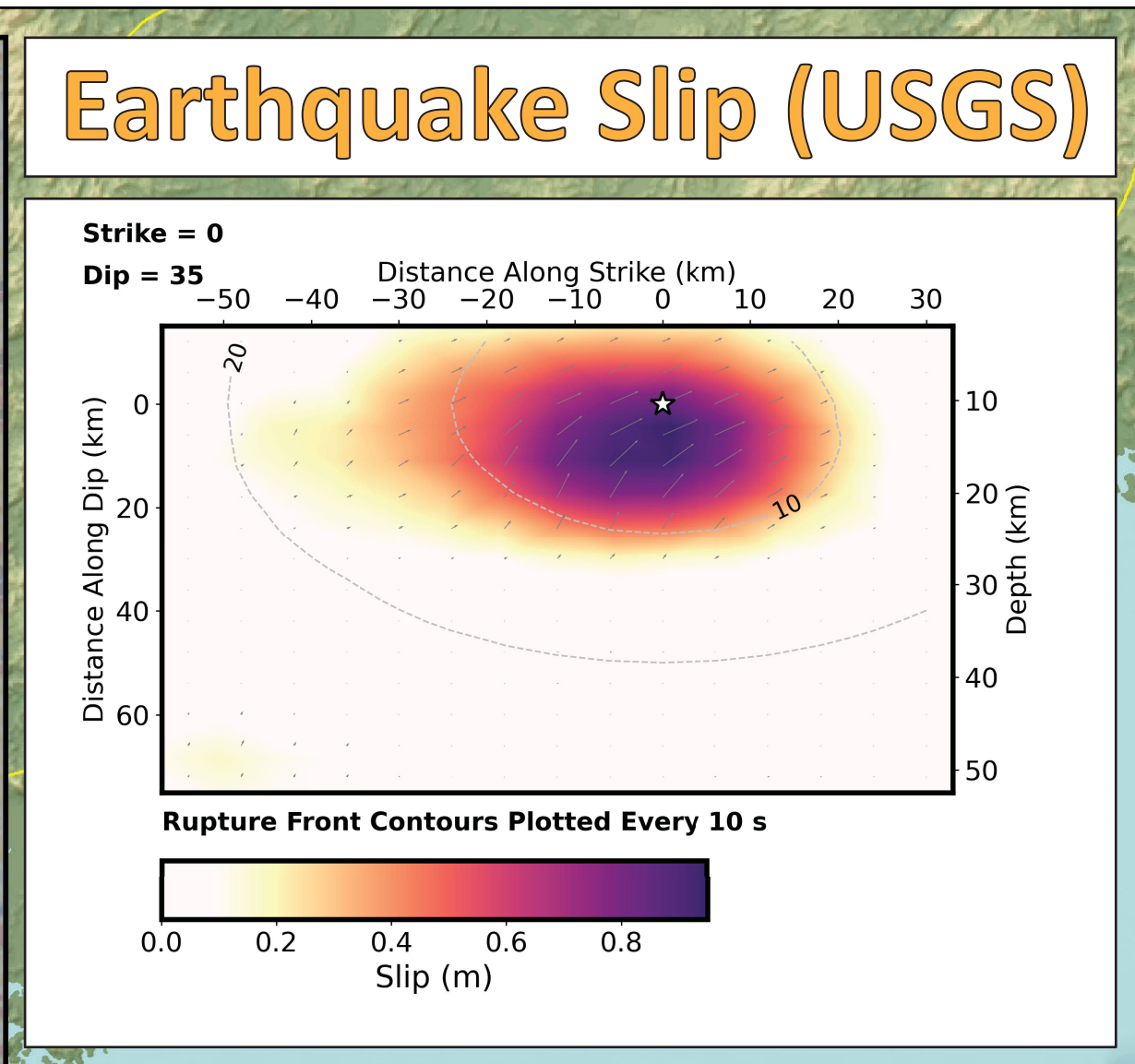
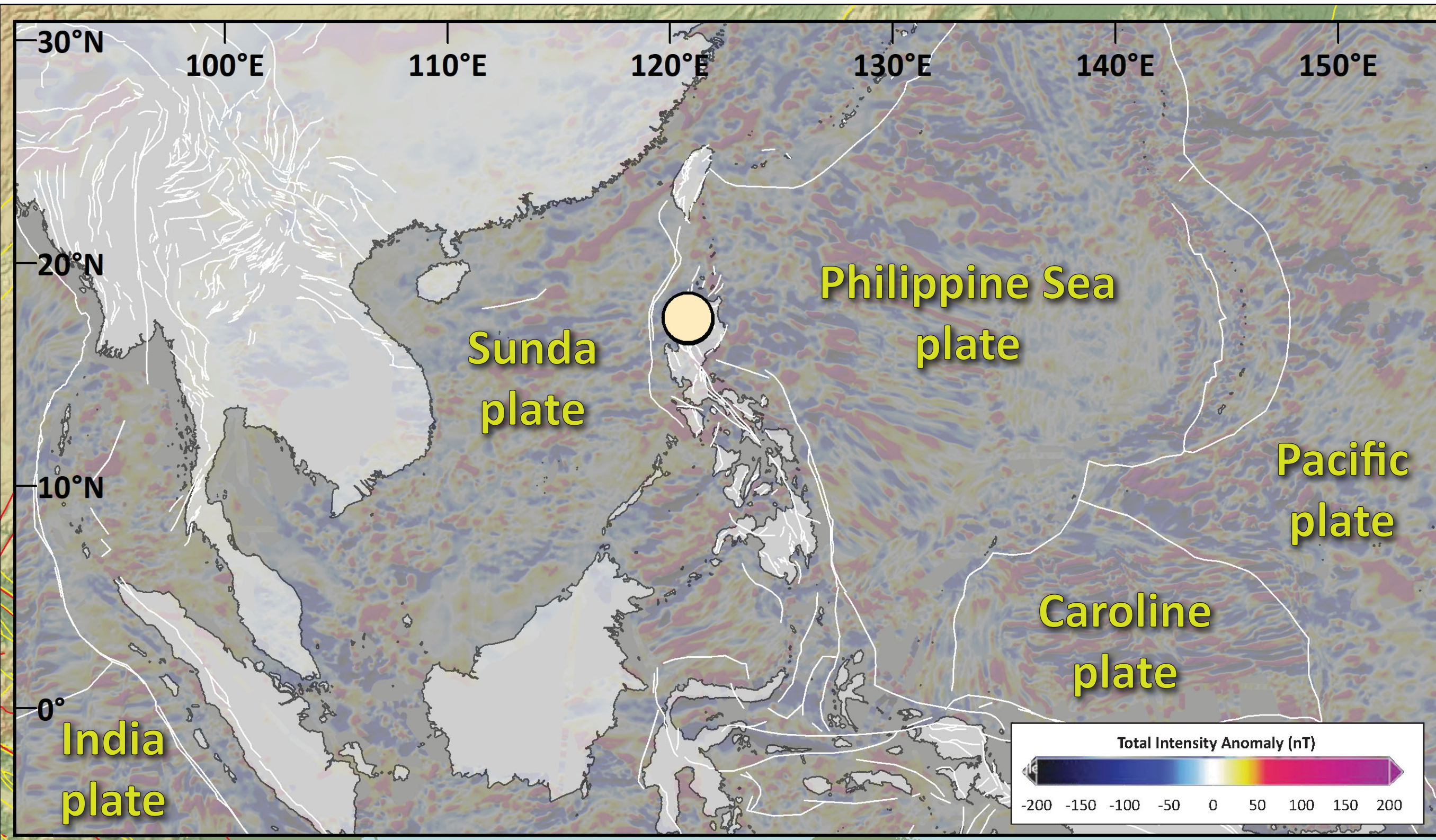


# Earthquake Report: 2022.07.27

## M 7.0 Philippines (& USGS Seismicity 1922-2022 M ≥ 7.0)



SHAKING	Not Felt	Weak	Light	Moderate	Strong	Very Strong	Severe	Violent	Extreme
DAMAGE	Note	None	None	Very Light	Light	Moderate	Moderate/Heavy	Heavy	Very Heavy
PGA (%g)	<0.05	0.3	2.76	6.2	11.5	21.5	40.1	74.7	>139
PGV (cm/s)	<0.02	0.13	1.41	4.65	9.64	20	41.4	85.8	>178
INTENSITY	1	2-3	4	5	6	7	8	9	10



● 27 July '22 M 7.0 (USGS) Fault

● 27 July '22 M 7.0 (EMSC) — Crustal (CCOP)

Seismicity (EMSC - 3 month) (GEM)

magnitude

- 2.4 - 3.0
- 3.1 - 4.0
- 4.1 - 5.0
- 5.1 - 6.0
- 6.1 - 7.0

Seismicity (USGS - 1 century)

magnitude

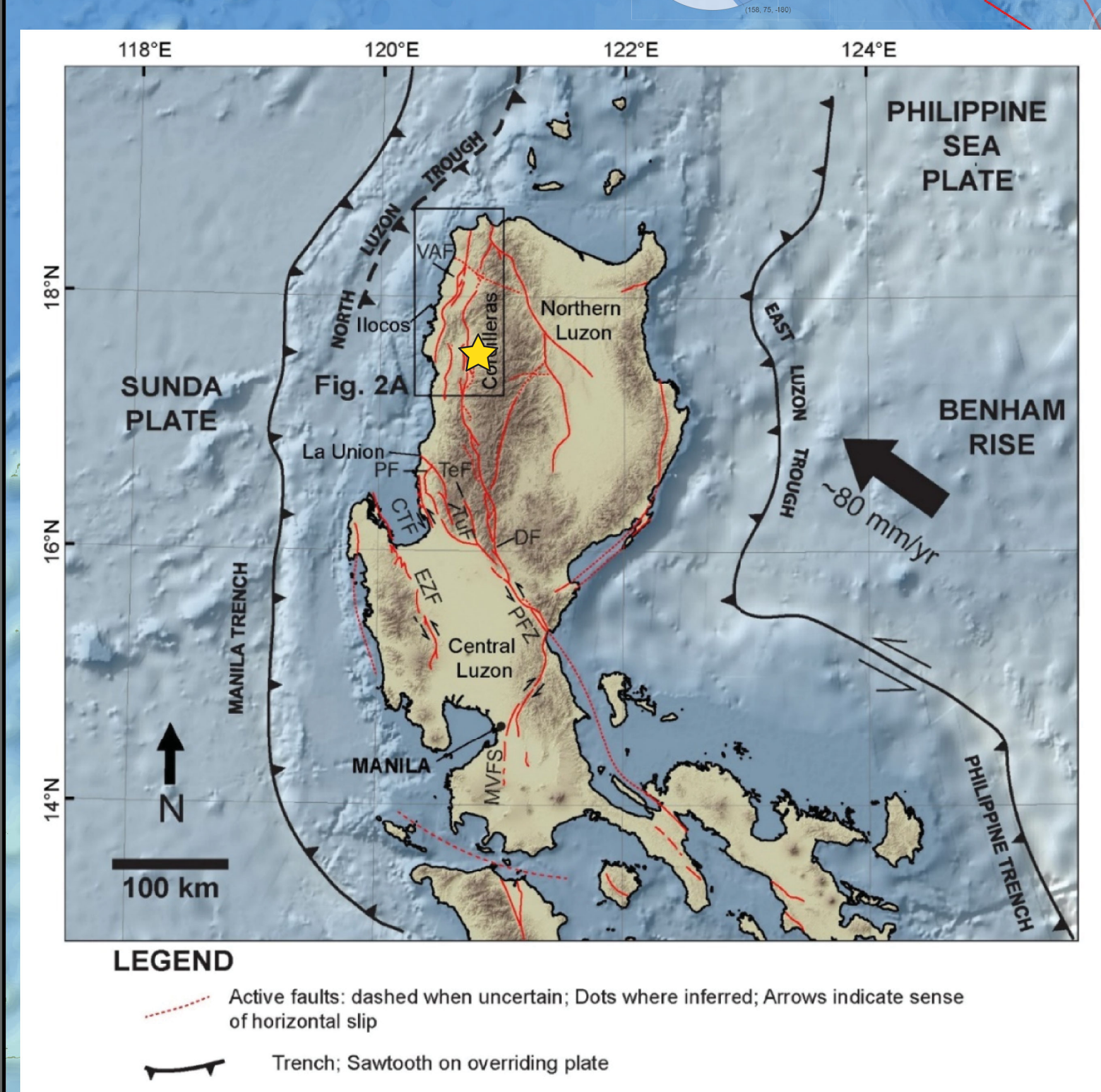
- 7.0 - 7.5
- 7.6 - 8.0
- 8.1 - 8.5
- 8.6 - 9.1

Topography: GMRT Ryan et al., 2009  
DOI: 10.1029/2008GC002332  
ALOS AW3D30 Tadono et al., 2014:  
© JAXA doi:10.5194/isprsannals-II-4-71-2014  
FABDEM (1 arc second dem):  
https://dx.doi.org/10.1088/1748-9326/ac4d4f.

Depth to Slab (km)

0 75 150 300 Miles

0 125 250 500 Kilometers



Rimando & Rimando, 2016  
doi:10.3390/geosciences10020083

