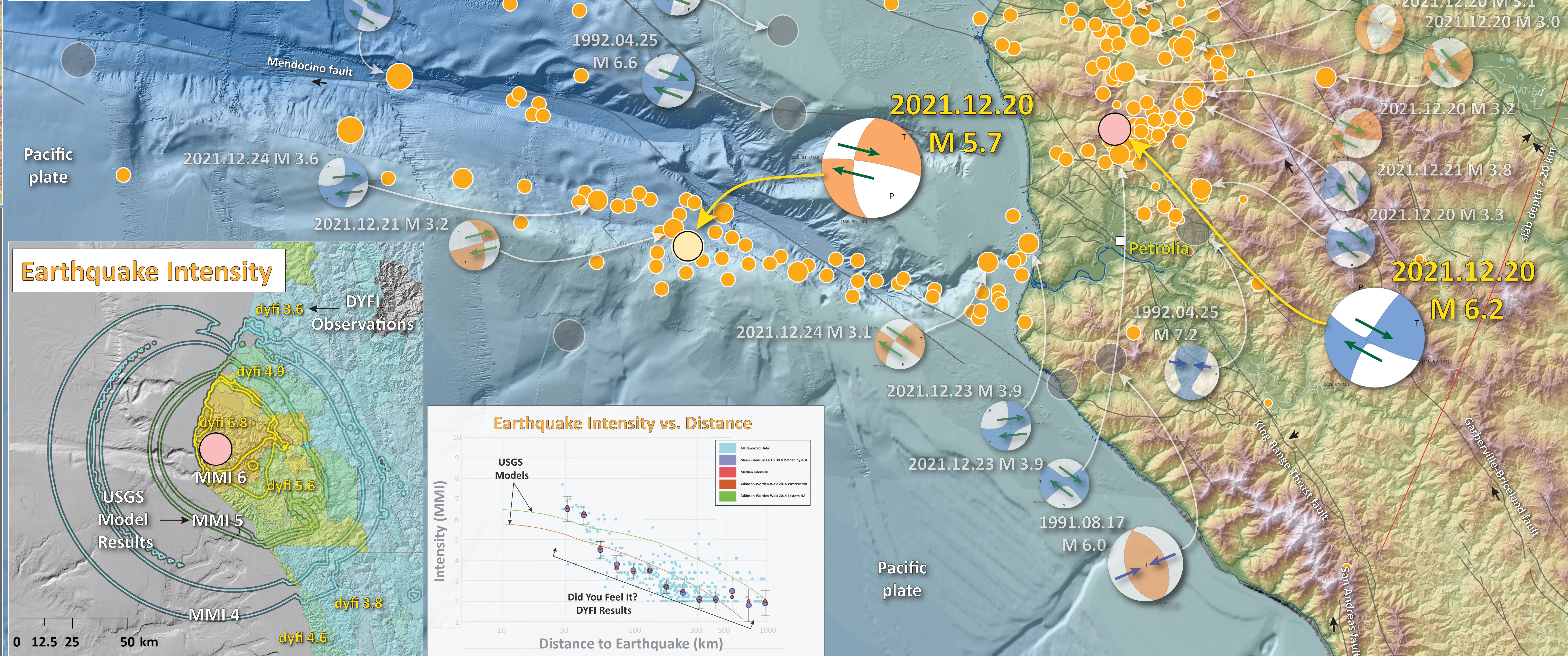
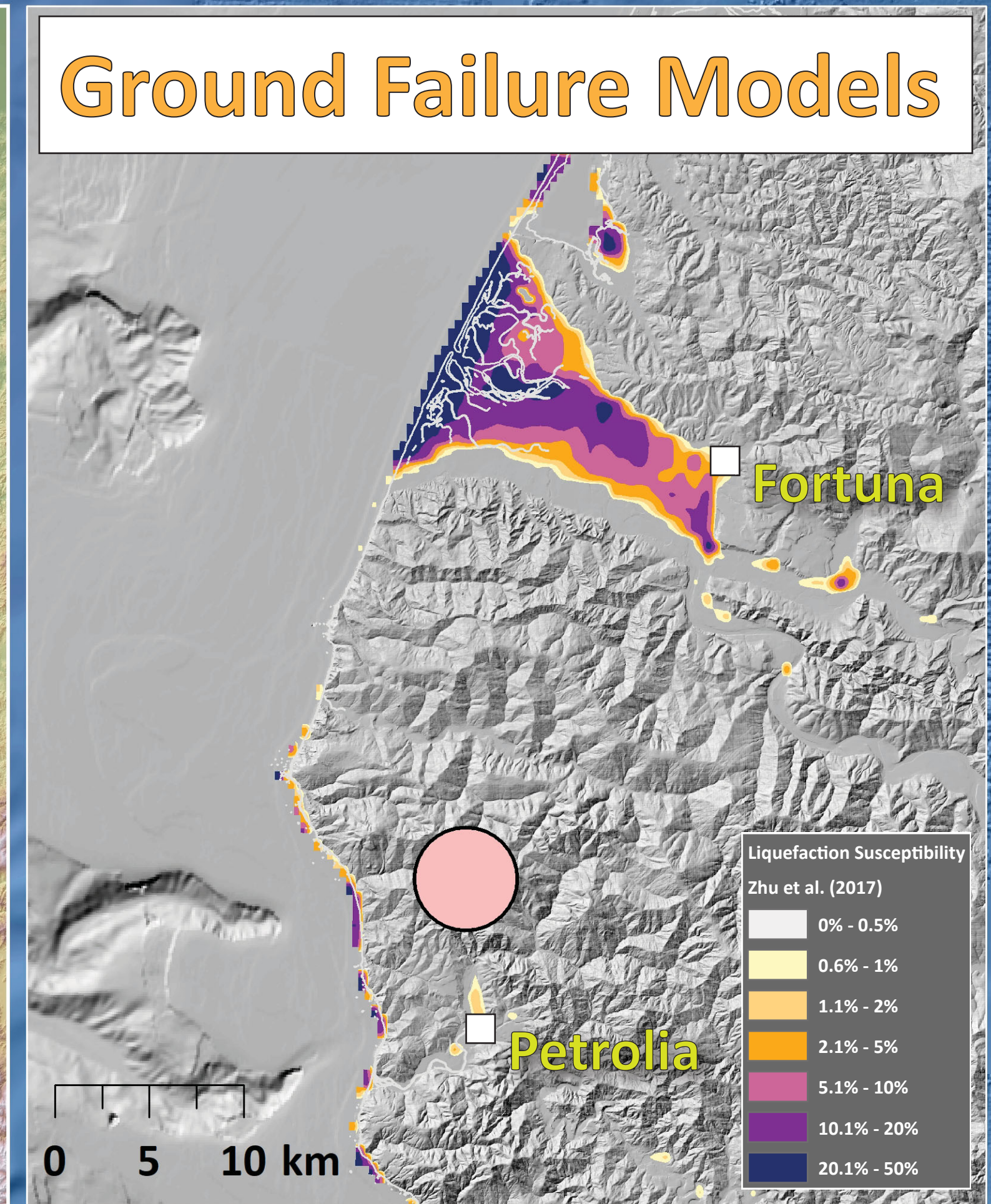
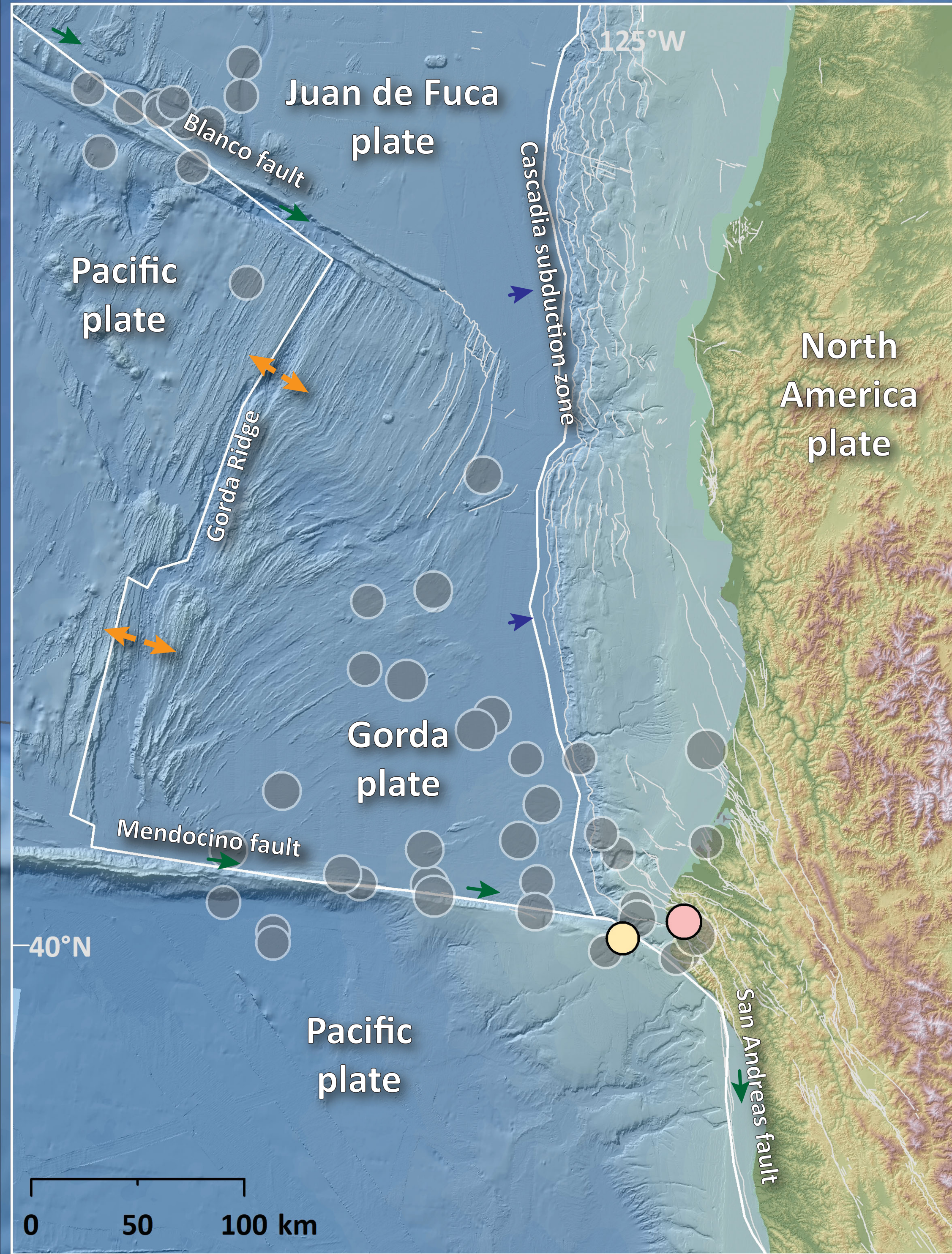


# Earthquake Report: 2021.12.20

## M 5.7 & 6.2 Medocino triple junction (& USGS Seismicity 1921-2021 M ≥ 6.0)

Mechanism Types	Normal Fault	Thrust Fault	Strike-Slip Fault
Top View			
Side View			

SHAKING	Not Felt	Weak	Light	Moderate	Strong	Very Strong	Severe	Violent	Extreme
DAMAGE	Note	None	None	Very Light	Light	Moderate	Moderate/Heavy	Heavy	Very Heavy
PGA (%g)	<0.05	0.3	2.76	6.2	11.5	21.5	40.1	74.7	>139
PGV (cm/s)	<0.02	0.13	1.41	4.65	9.64	20	41.4	85.8	>178
INTENSITY	1	2-3	4	5	6	7	8	9	10



**Seismicity (USGS - 1 century) magnitude**

- 20 Dec '21 M 5.7
- 20 Dec '21 M 6.2

**Seismicity (USGS - 1 month) magnitude**

- 0.0 - 1.0
- 1.1 - 2.0
- 2.1 - 3.0
- 3.1 - 4.0
- 4.1 - 5.0
- 5.1 - 6.2

**Fault (USGS QFFDB)**

**Road**

**Seismicity (USGS - 1 century) magnitude**

- 6.0 - 6.5
- 6.6 - 7.0
- 7.1 - 7.5
- 7.6 - 8.0

**Elevation**

High

Low

**Depth**

Shallow

Deep

Topography: USGS NED 10 meter

Bathymetry: doi: 10.1029/2008GC002332

doi: 10.5066/P9C5DBMR

0 1.25 2.5 5 Miles

0 2.5 5 10 km

Jason R. Patton  
earthjay.com © 2022

**CISN**

California Department of Conservation  
California Geological Survey

**USGS**  
science for a changing world

