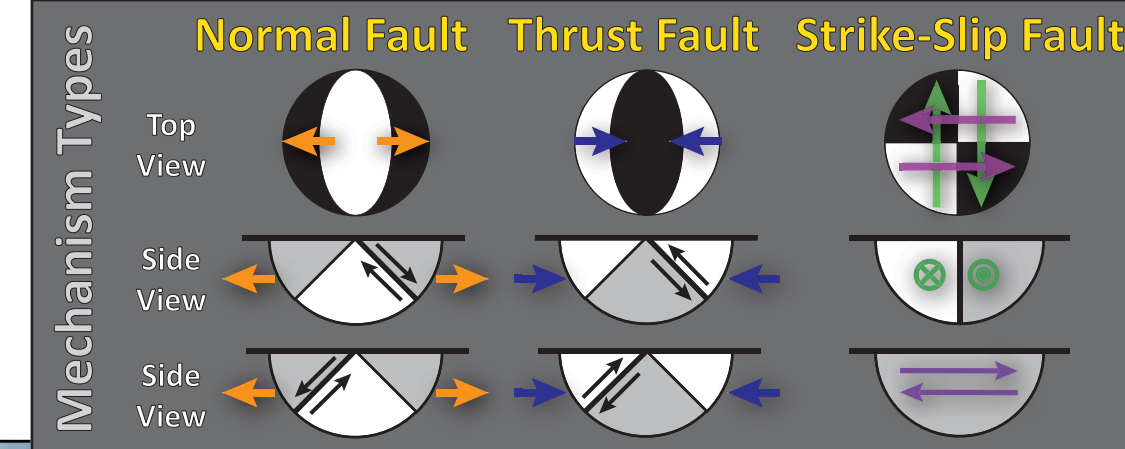
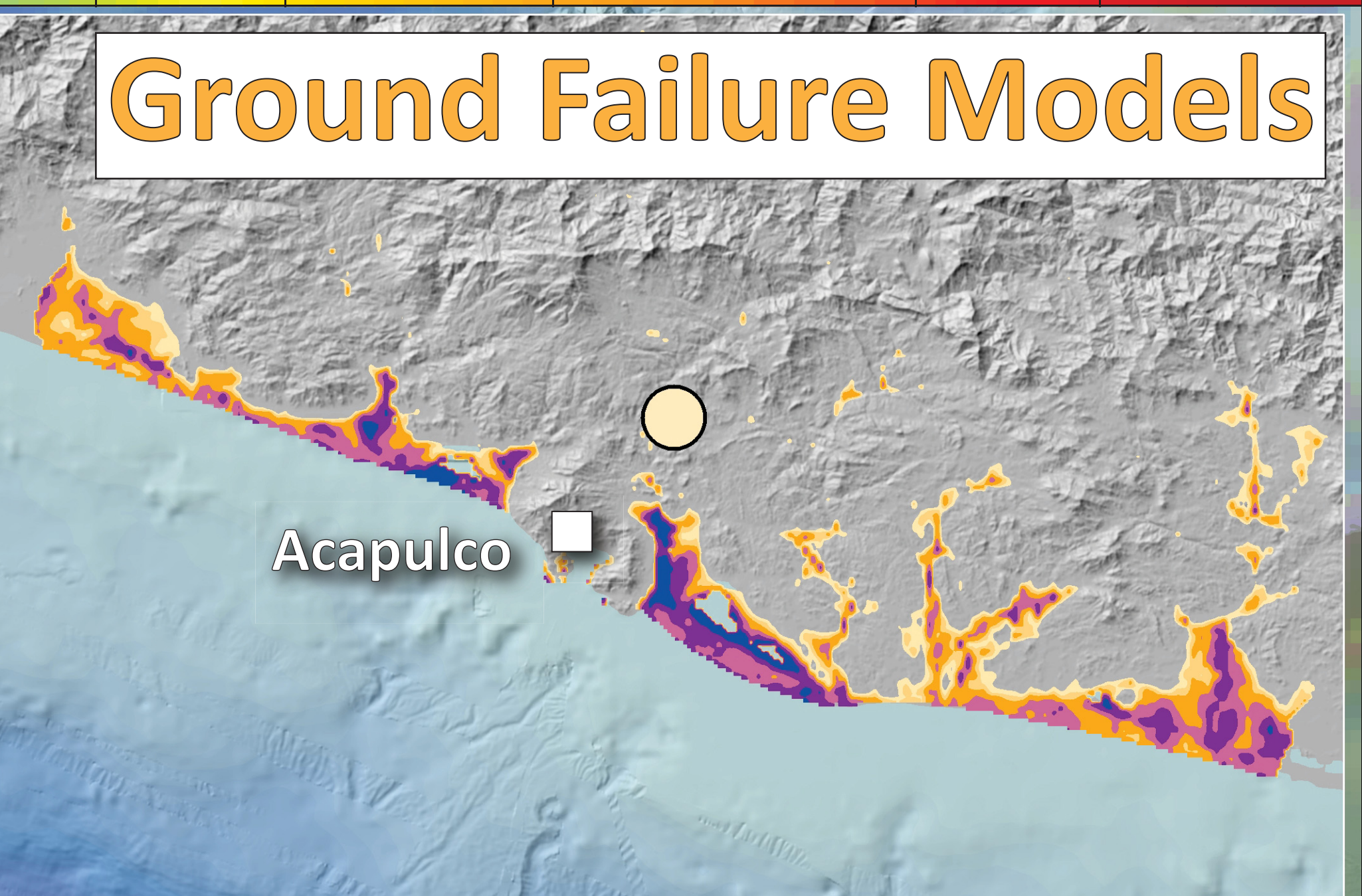
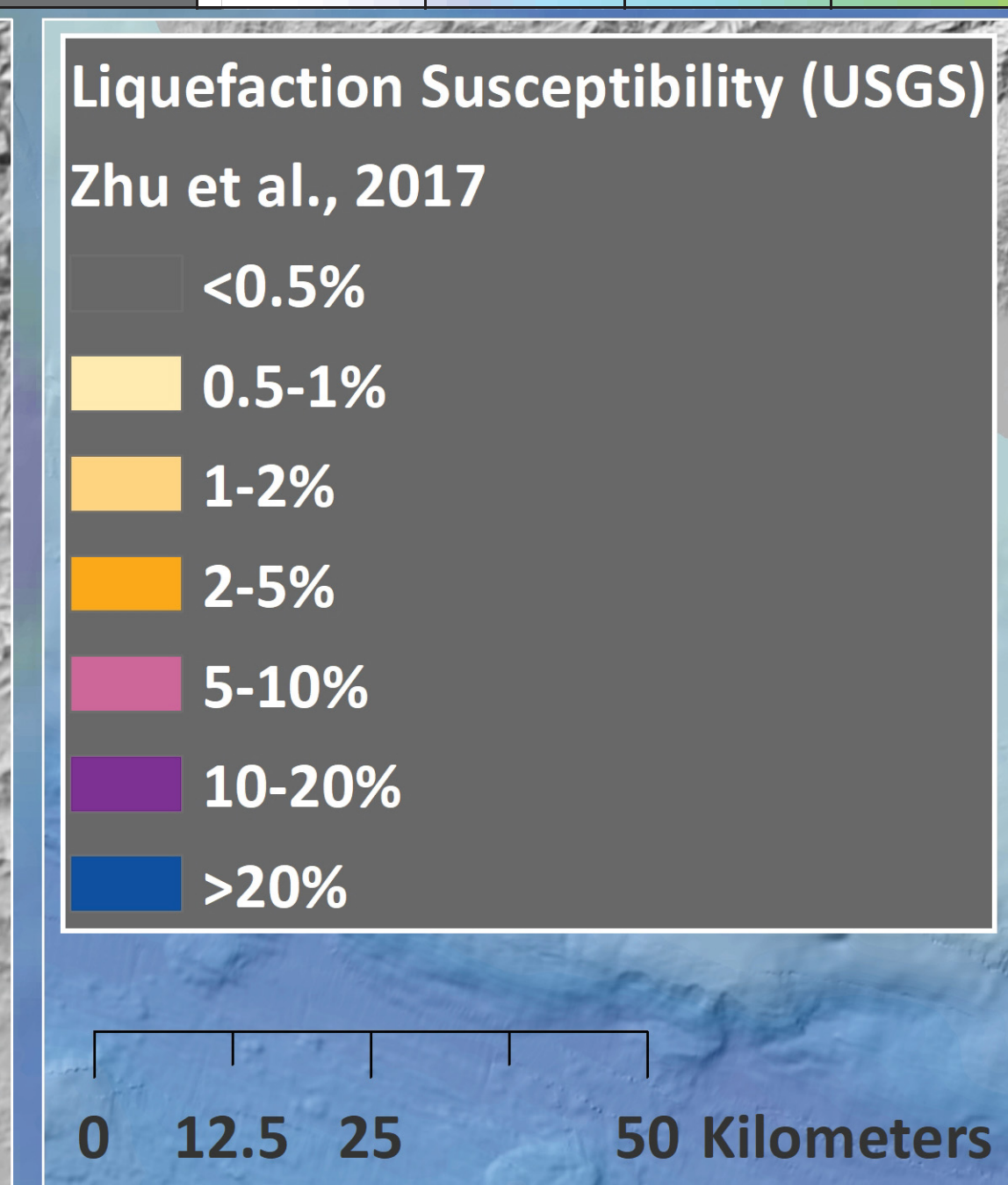
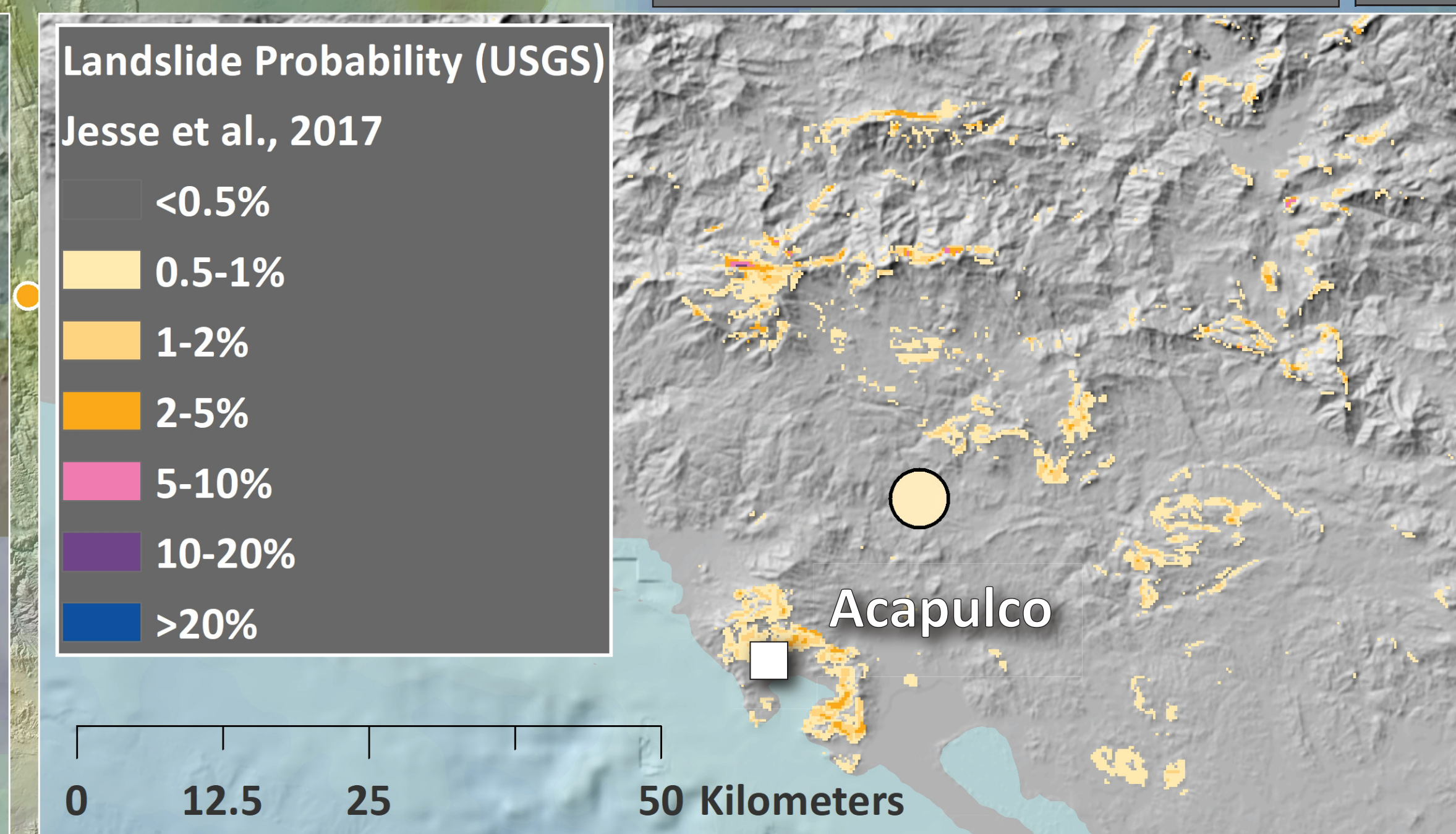
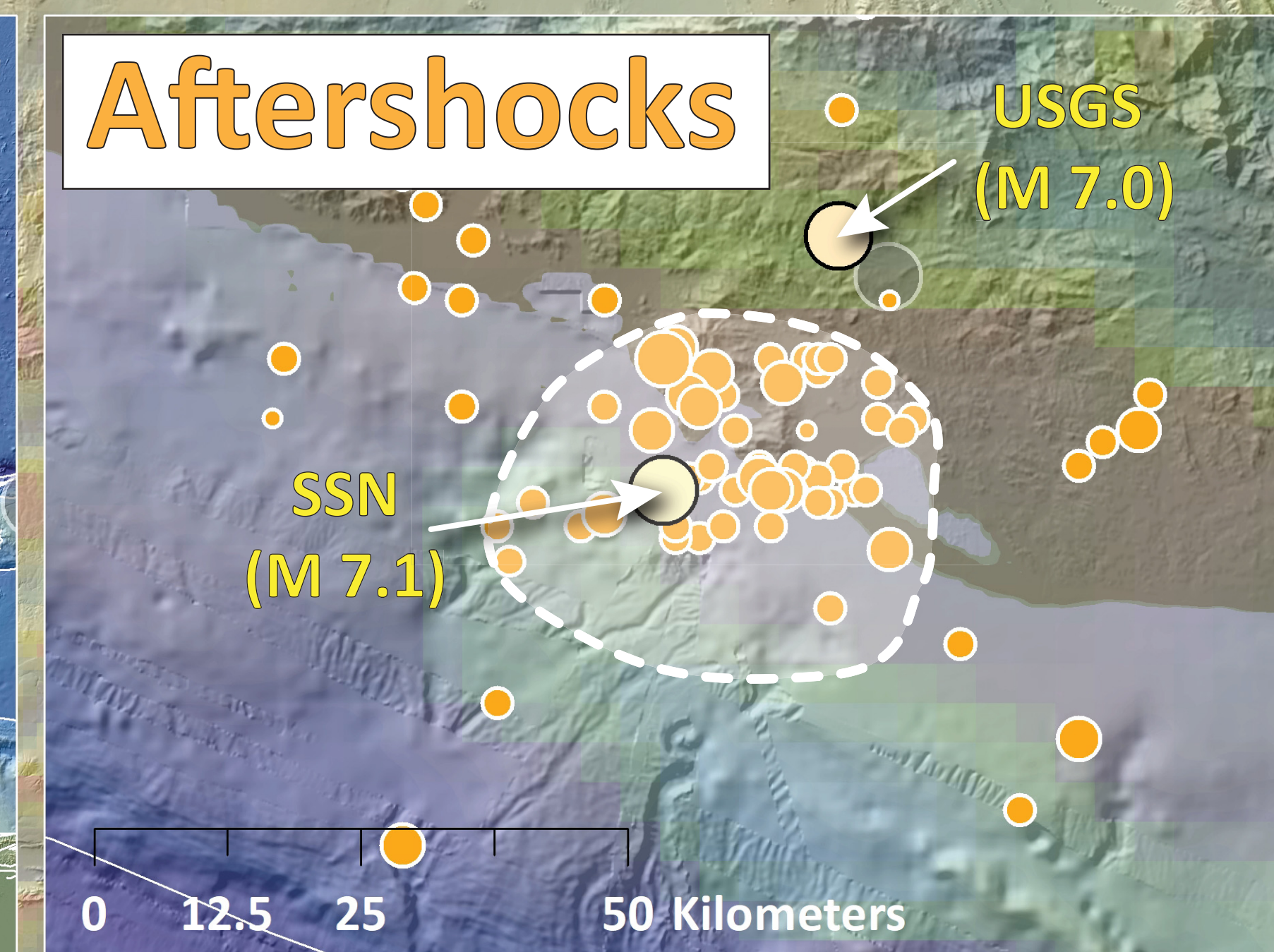


# Earthquake Report: 2021.09.08

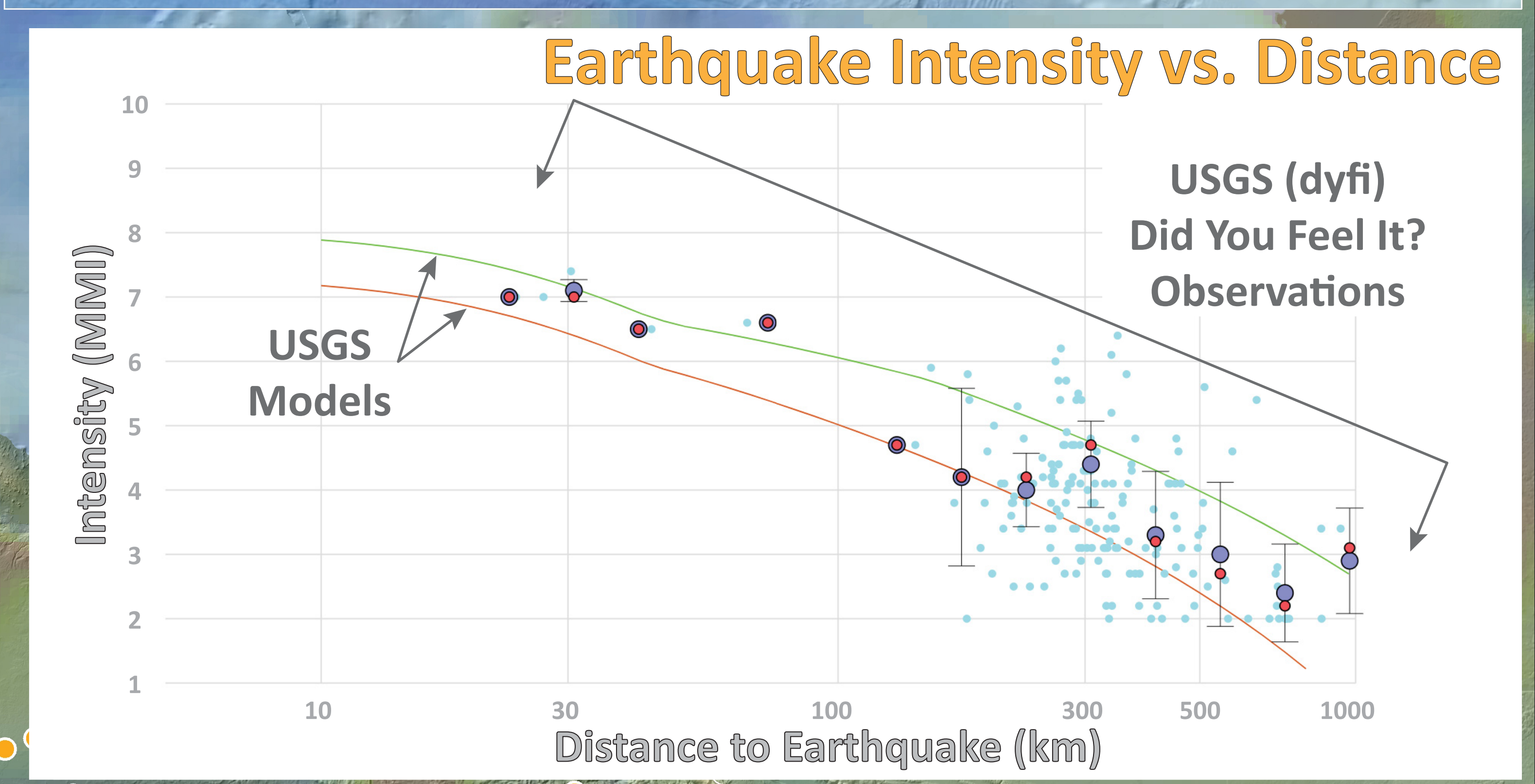
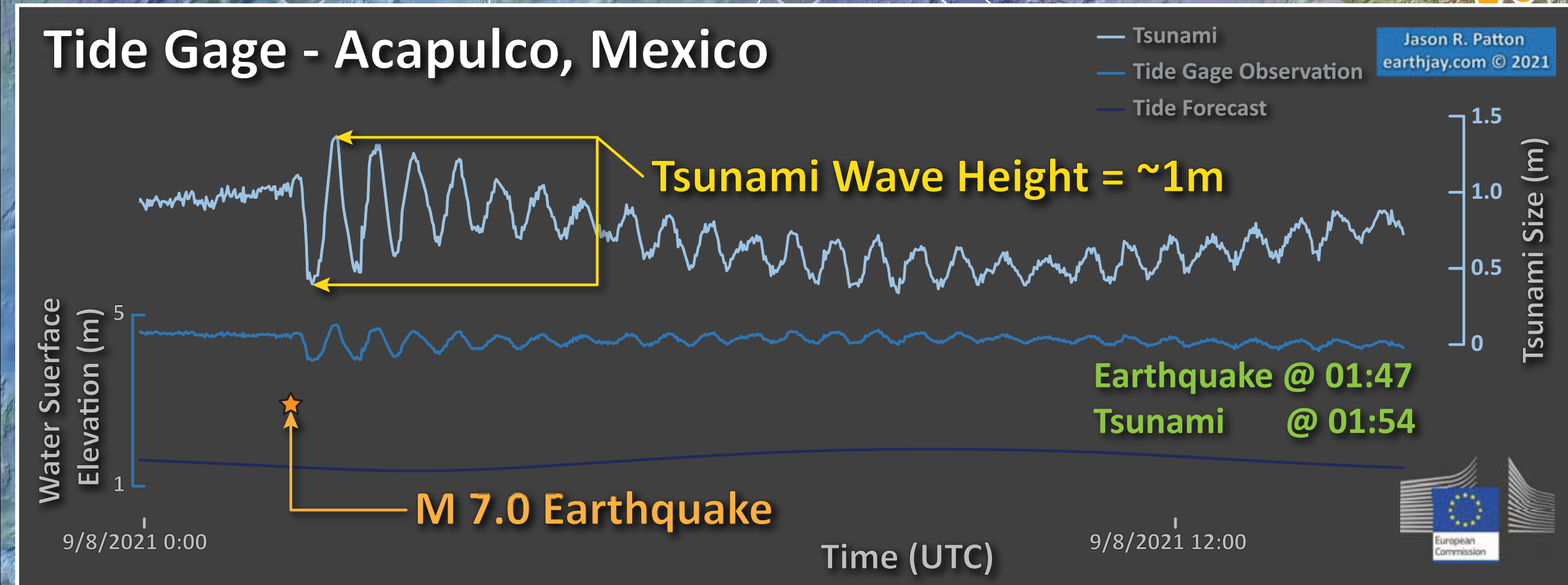
## M 7.0 near Acapulco, Mexico (& USGS Seismicity 1921-2021 M ≥ 7.0)



SHAKING	Not Felt	Weak	Light	Moderate	Strong	Very Strong	Severe	Moderate/Heavy	Violent	Extreme
DAMAGE	Note	None	None	Very Light	Light	Moderate	Moderate/Heavy	Heavy	Very Heavy	
PGA (%g)	<0.05	0.3	2.76	6.2	11.5	21.5	40.1	74.7	>139	
PGV (cm/s)	<0.02	0.13	1.41	4.65	9.64	20	41.4	85.8	>178	
INTENSITY	1	2-3	4	5	6	7	8	9	10	



### Tsunami



● 8 Sept '21 M 7.0 (SSN)

● 8 Sept '21 M 7.0 (USGS)

Seismicity (SSN - 1 week) magnitude

- 2.0 - 3.0
- 3.1 - 4.0
- 4.1 - 5.0
- 5.1 - 6.0
- 6.1 - 7.1

Seismicity (USGS - 1 century) magnitude

- 7.0 - 7.5
- 7.6 - 8.0
- 8.1 - 8.2

— Fault (GEM)

Total Intensity Anomaly (nT)

Depth

Shallow

Deep

Elevation

High

Low

Topography: Ryan et al., 2009  
doi:10.1029/2008GC002332.

0 37.5 75 150 Miles

0 50 100 200 Kilometers

Jason R. Patton  
earthjay.com © 2021

