

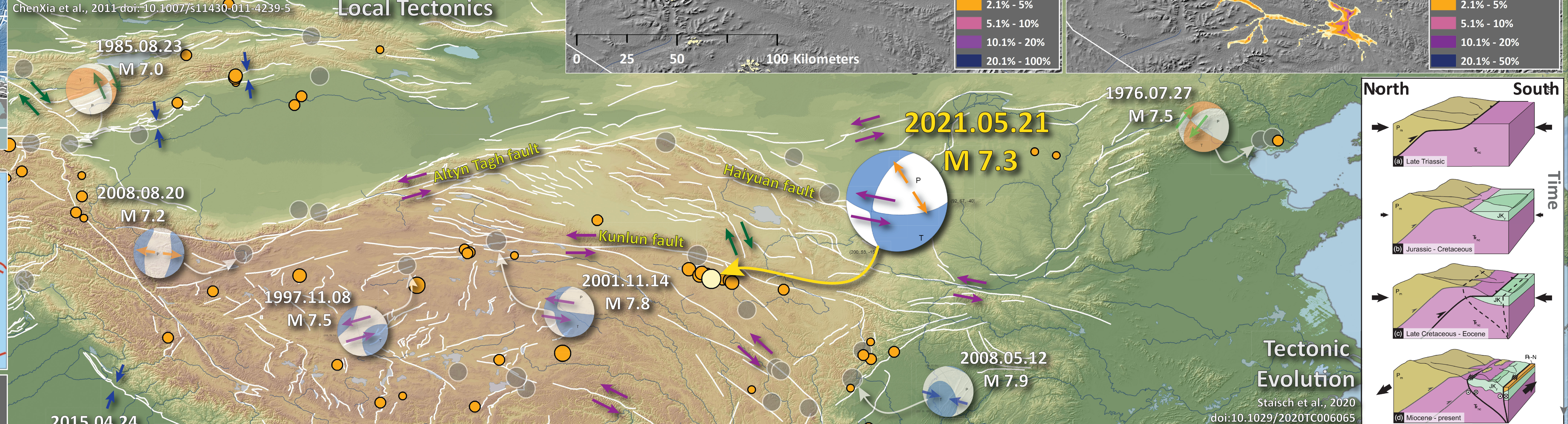
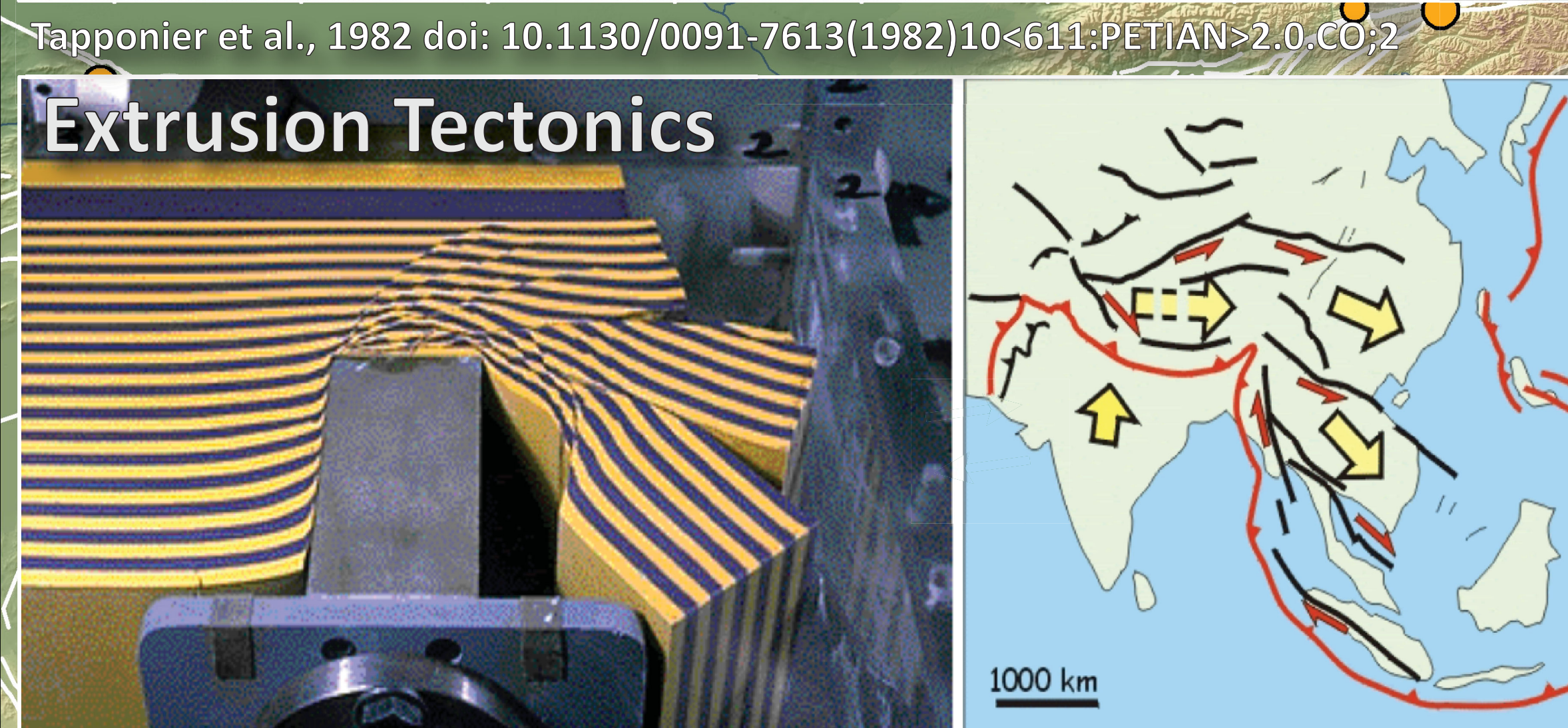
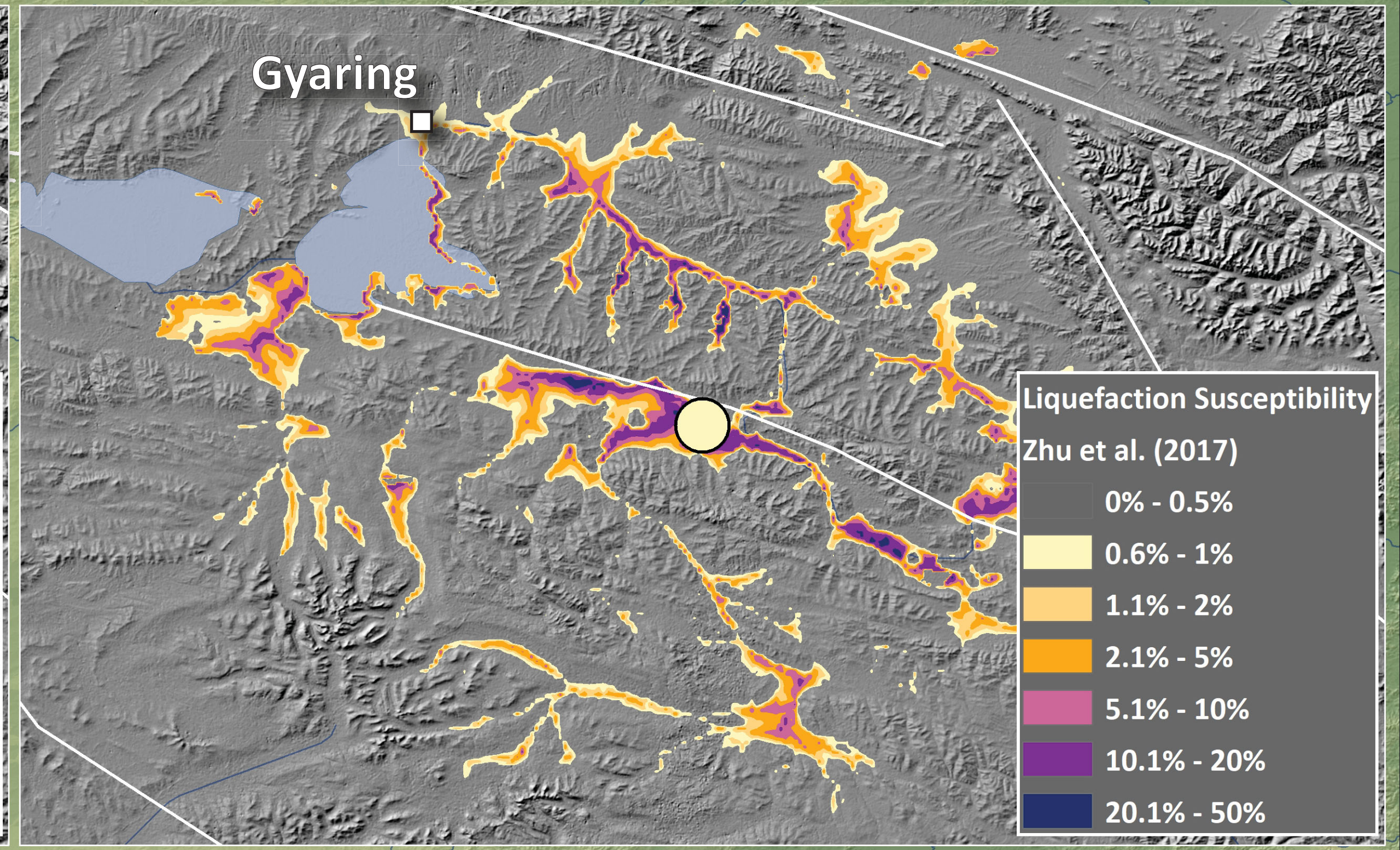
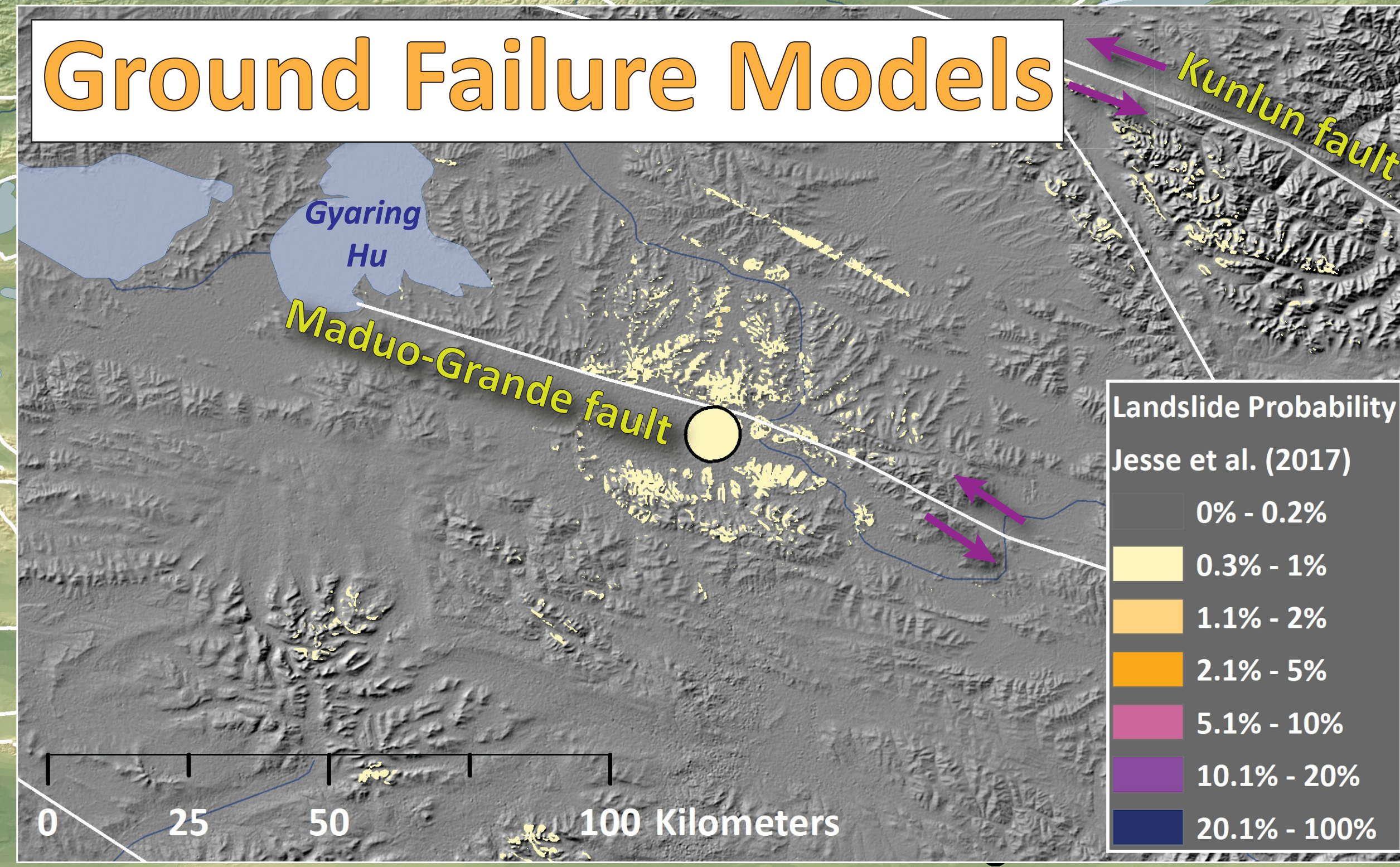
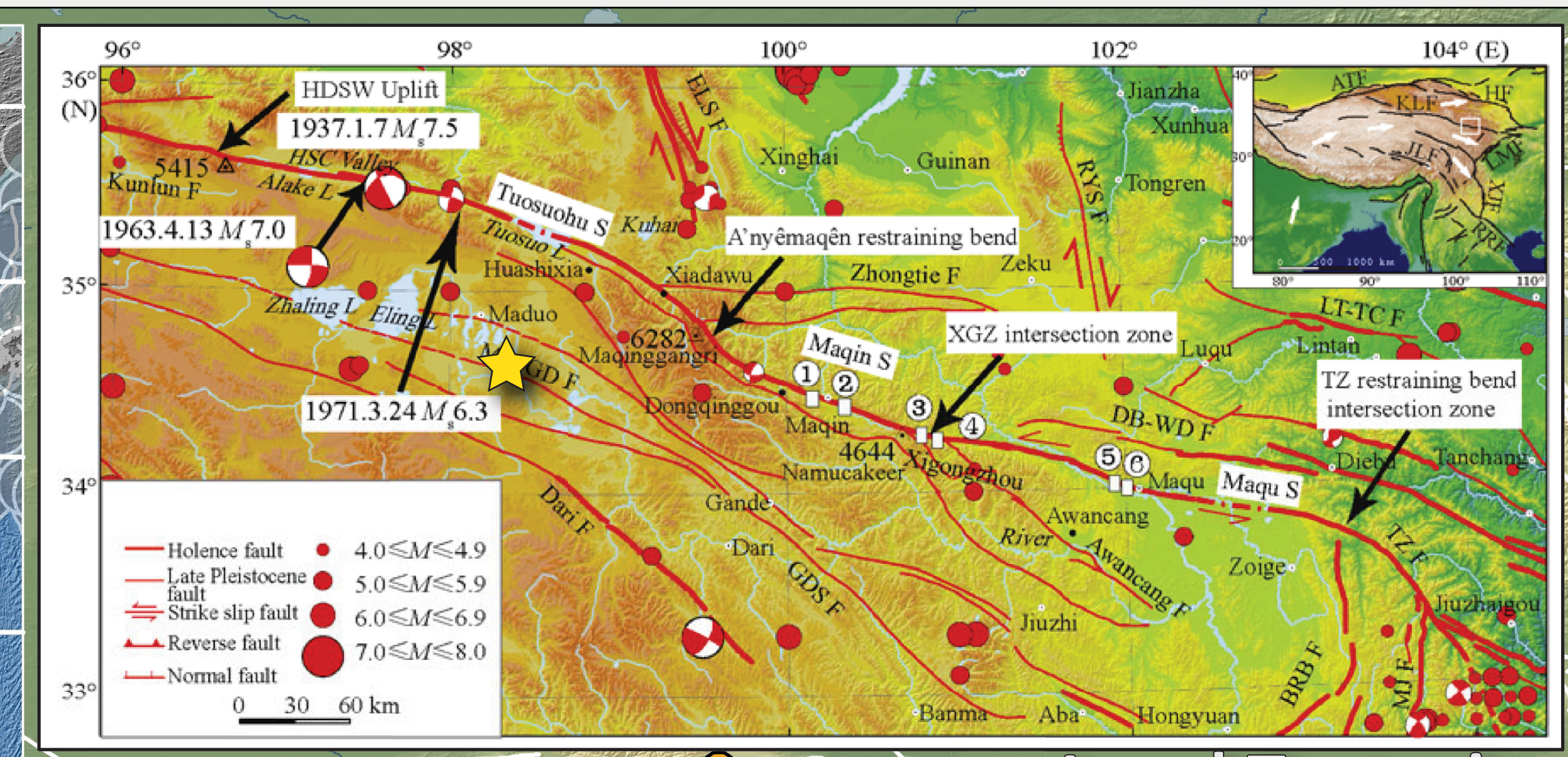
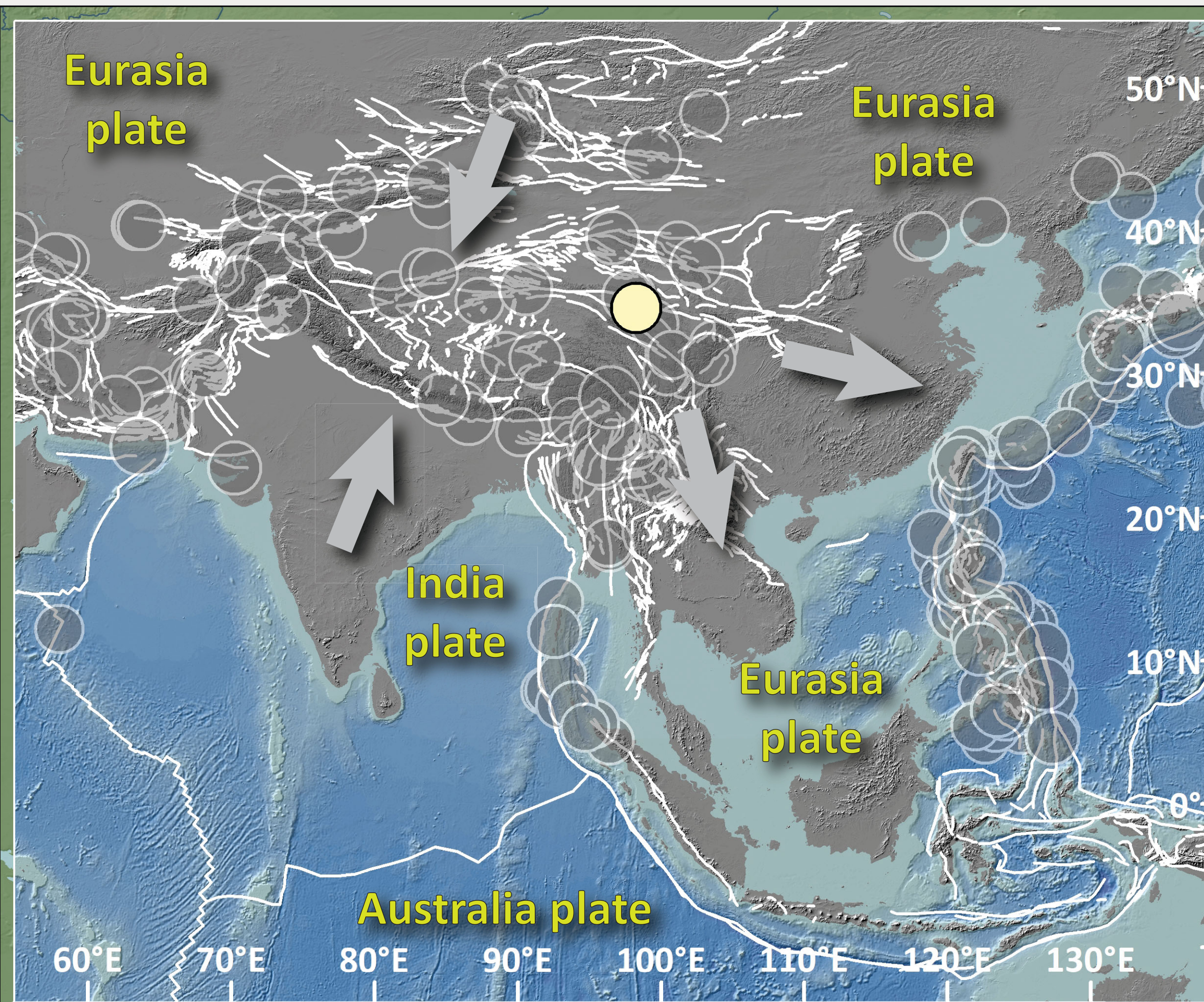
Earthquake Report: 2021.05.21

M 7.3 Central China (& USGS Seismicity 1921-2021 M ≥ 7)

Mechanism Types

Top View			
Side View			

SHAKING	Not Felt	Weak	Light	Moderate	Strong	Very Strong	Severe	Moderate/Heavy	Violent	Extreme
DAMAGE	Note	None	None	Very Light	Light	Moderate	Moderate/Heavy	Heavy	Very Heavy	
PGA (%g)	<0.05	0.3	2.76	6.2	11.5	21.5	40.1	74.7	>139	
PGV (cm/s)	<0.02	0.13	1.41	4.65	9.64	20	41.4	85.8	>178	
INTENSITY	1	2-3	4	5	6	7	8	9	10	



Seismicity (USGS - 1 century) magnitude

- 21 May '21 M 6.1
- 21 May '21 M 7.3

Seismicity (USGS - 3 month) magnitude

- 3.0 - 4.3
- 4.4 - 4.7
- 4.8 - 5.3
- 5.4 - 6.1
- 6.2 - 7.3

Seismicity (USGS - 1 century) magnitude

- 7.0 - 7.5
- 7.6 - 8.0
- 8.1 - 8.5
- 8.6 - 9.1

Lake (Natural Earth)

River (Natural Earth)

Fault

GEM

Topography: Ryan et al., 2009 doi:10.1029/2008GC002332

0 150 300 600 Miles

0 250 500 1,000 Kilometers

USGS science for a changing world

Jason R. Patton earthjay.com © 2021

