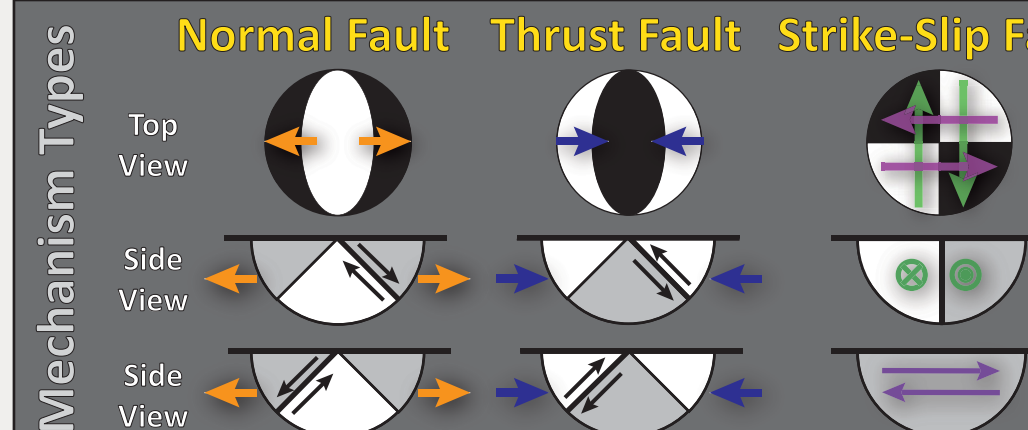
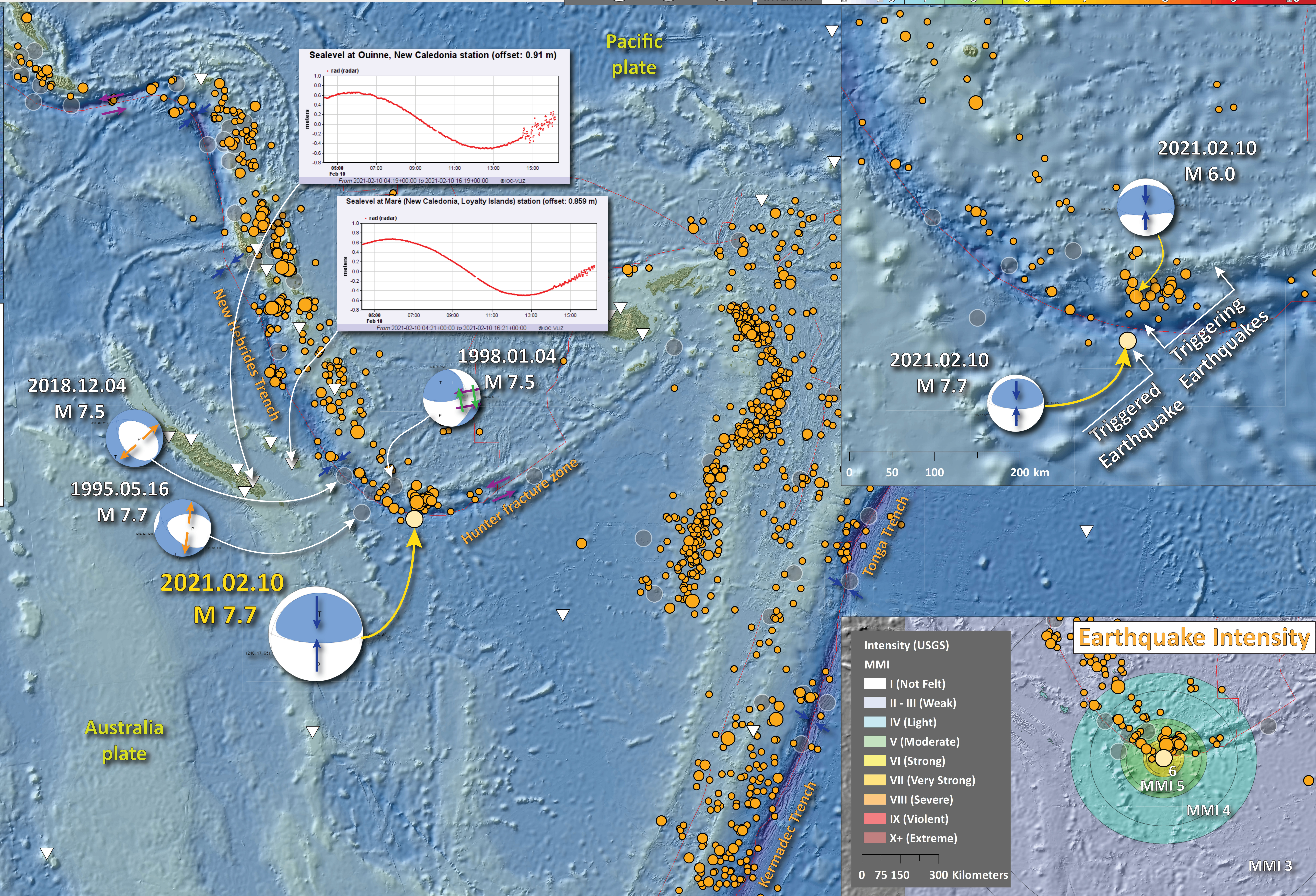
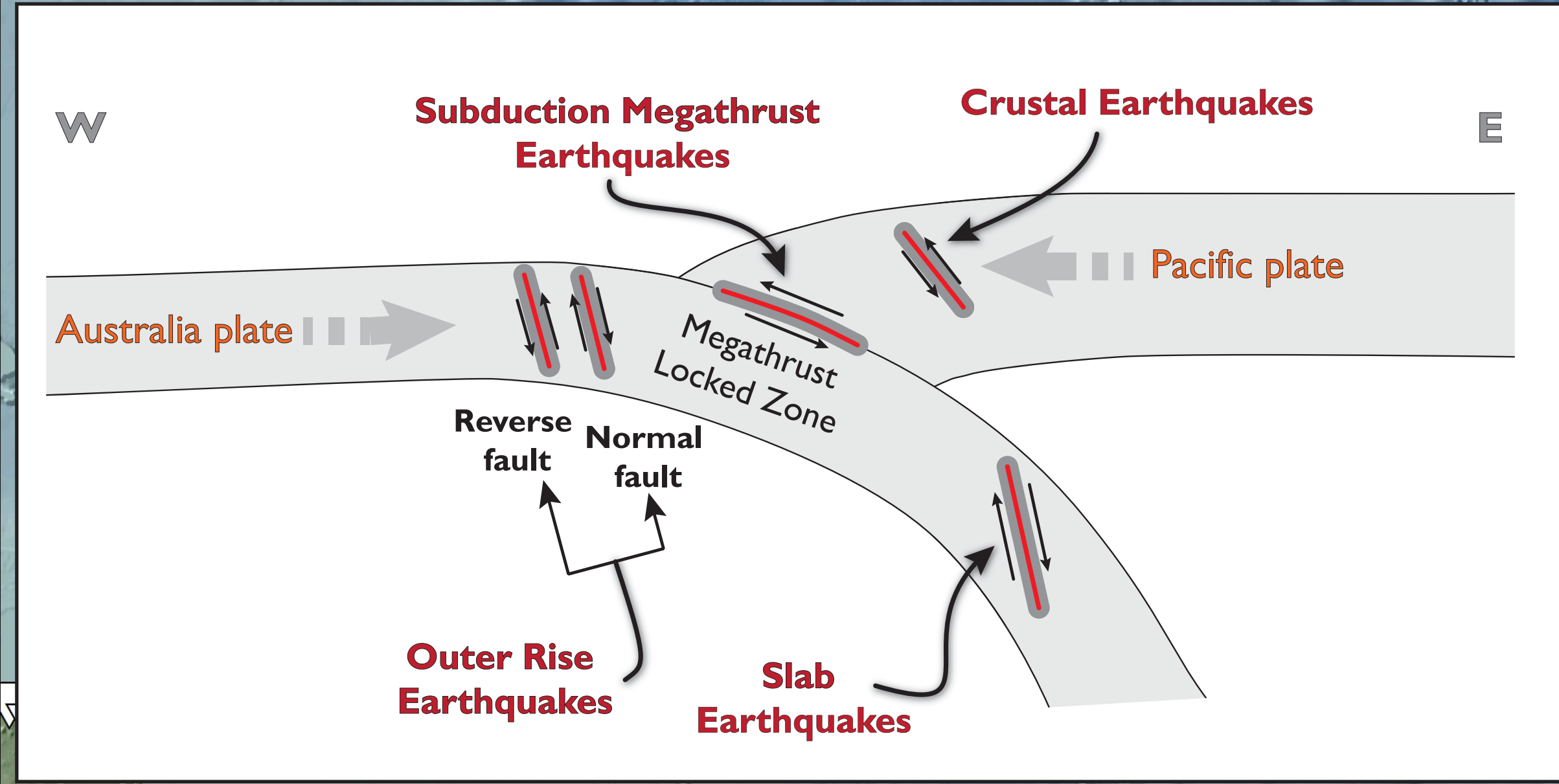
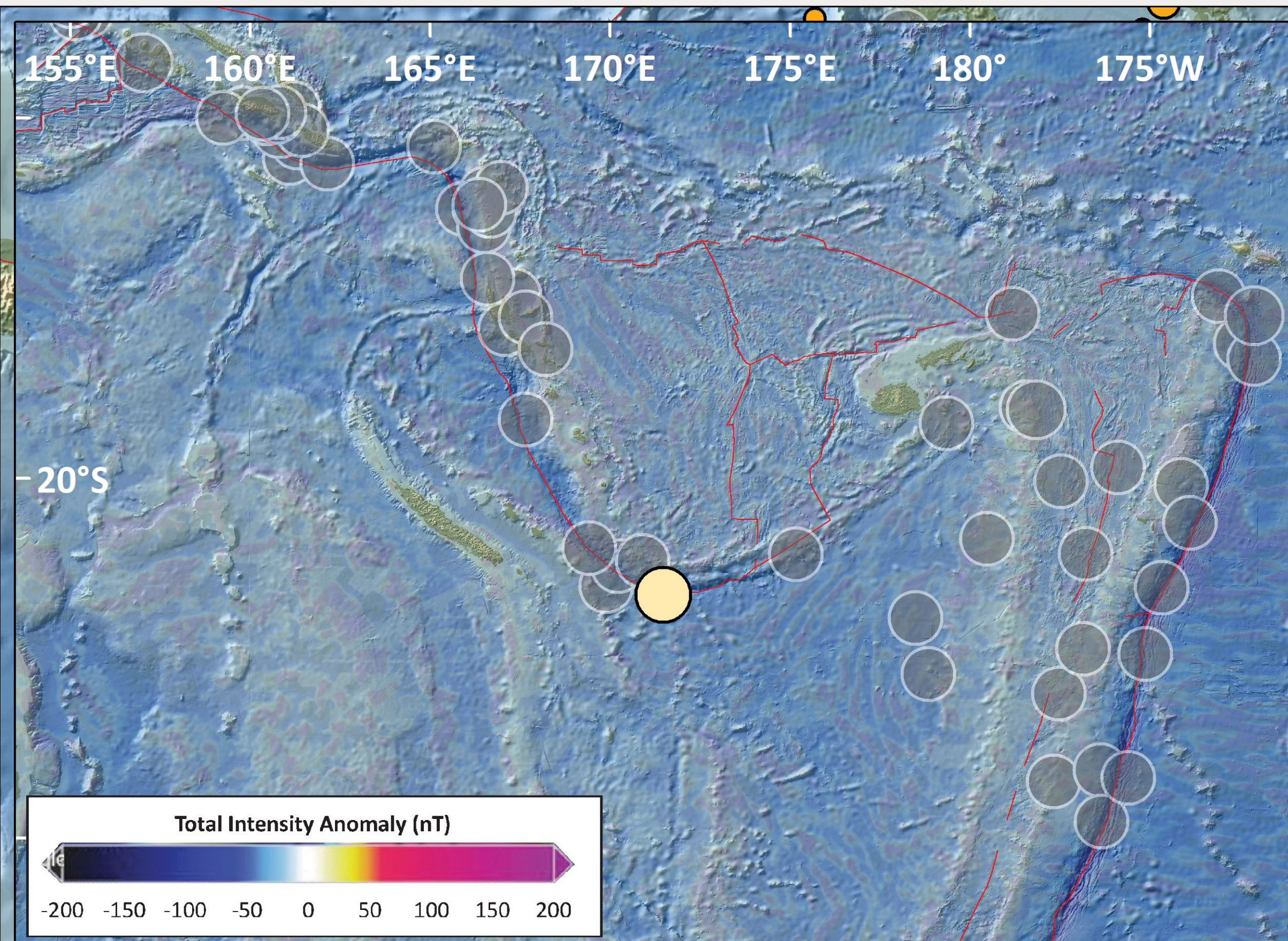


Earthquake Report: 2021.02.10

M 7.7 Loyalty Islands (& USGS Seismicity 1921-2021 M ≥ 7.5)



SHAKING	Not Felt	Weak	Light	Moderate	Strong	Very Strong	Severe	Moderate/Heavy	Violent	Extreme
DAMAGE	Note	None	None	Very Light	Light	Moderate	Moderate/Heavy	Heavy	Very Heavy	
PGA (%g)	<0.05	0.3	2.76	6.2	11.5	21.5	40.1	74.7	>139	
PGV (cm/s)	<0.02	0.13	1.41	4.65	9.64	20	41.4	85.8	>178	
INTENSITY	1	2-3	4	5	6	7	8	9	10	



- ▼ Tide Gage (IOC)
- 10 Feb '21 M 7.7
- Seismicity (USGS - 6 month)
- mag
- 3.0 - 5.0
- 5.1 - 6.0
- 6.1 - 7.0
- 7.1 - 7.7
- 7.5 - 8.0
- 8.1 - 8.2
- Fault (GEM)

Topography: Ryan et al., 2009
doi:10.1029/2008GC002332.

0 75 150 300 Miles

0 100 200 400 Kilometers

Jason R. Patton
earthjay.com © 2021

