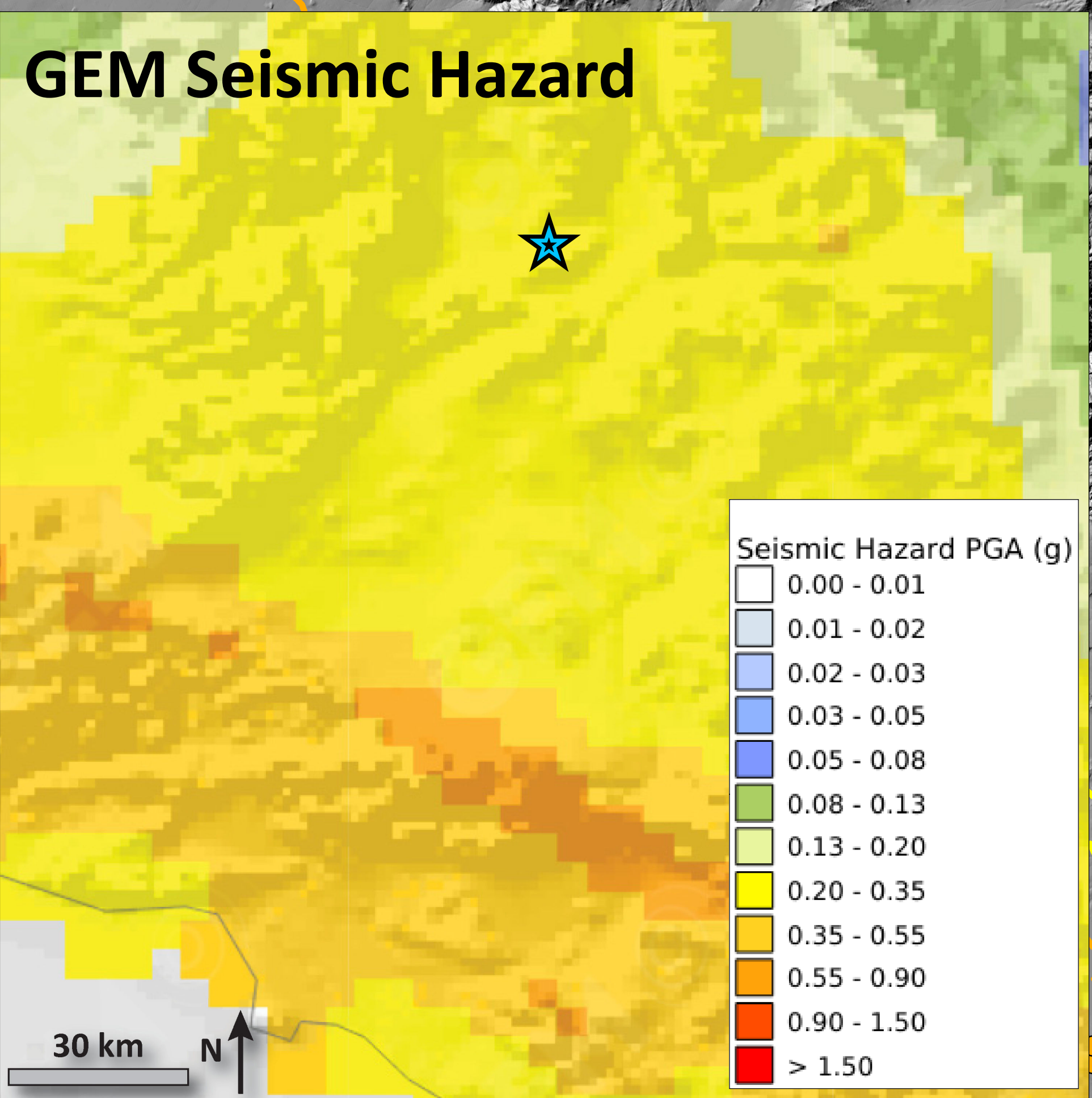
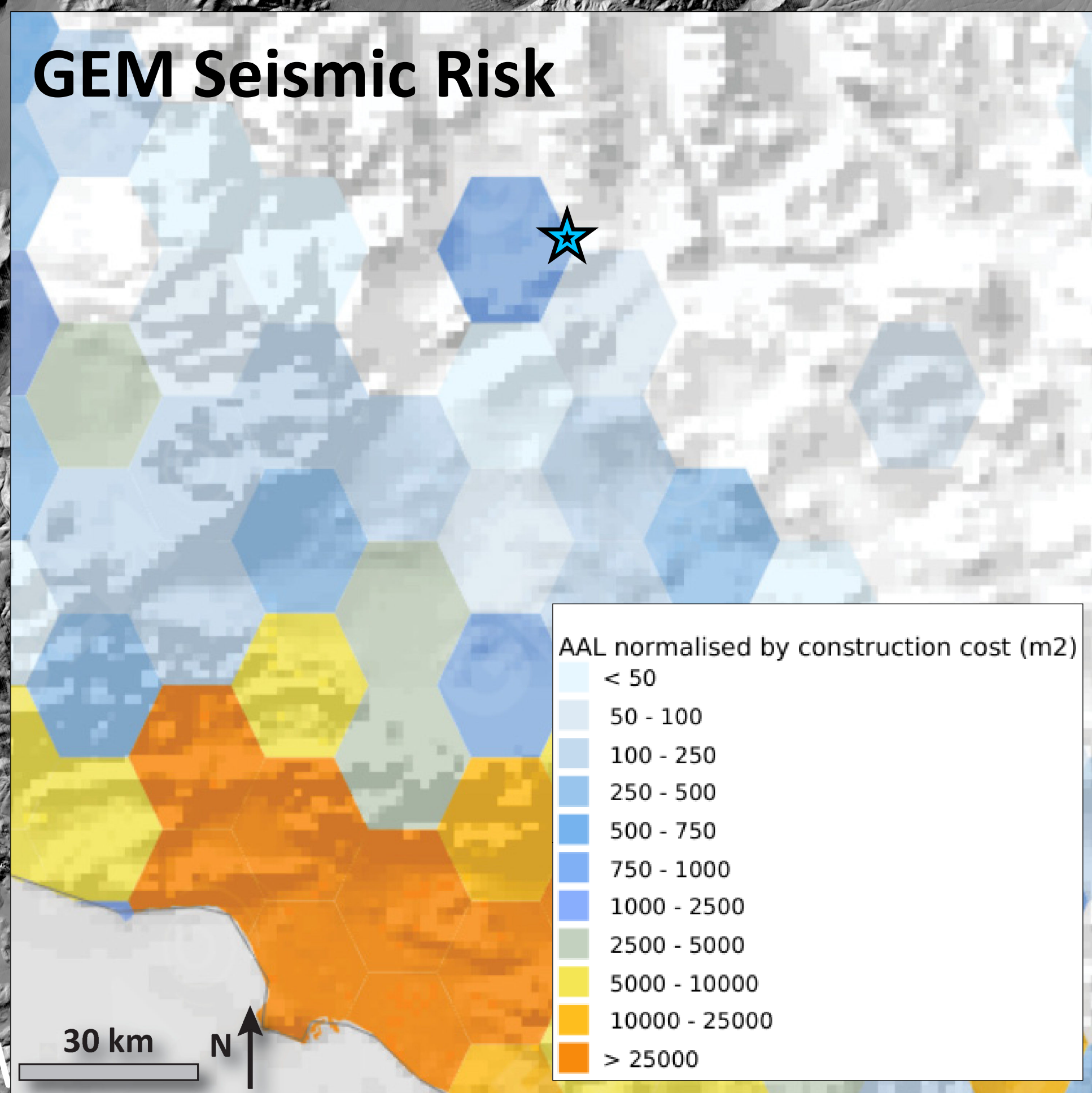
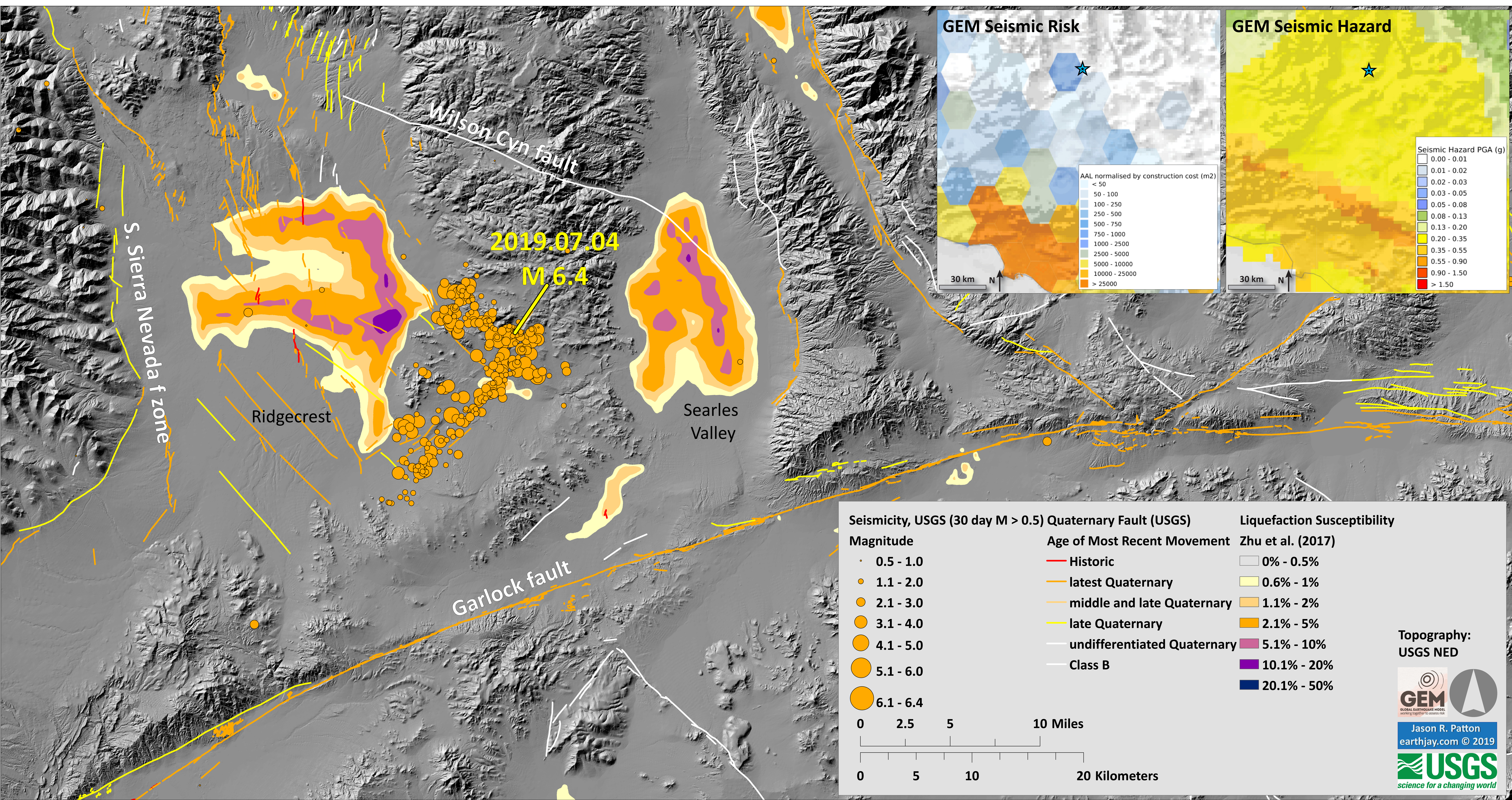


2019.07.04 M 6.4 Earthquake near Ridgecrest, California - Liquefaction Susceptibility



Seismicity, USGS (30 day M > 0.5)

Magnitude

- 0.5 - 1.0
- 1.1 - 2.0
- 2.1 - 3.0
- 3.1 - 4.0
- 4.1 - 5.0
- 5.1 - 6.0
- 6.1 - 6.4

0 2.5 5 10 Miles

0 5 10 20 Kilometers

Quaternary Fault (USGS)

Age of Most Recent Movement

- Historic
- latest Quaternary
- middle and late Quaternary
- late Quaternary
- undifferentiated Quaternary
- Class B

Liquefaction Susceptibility

Zhu et al. (2017)

- 0% - 0.5%
- 0.6% - 1%
- 1.1% - 2%
- 2.1% - 5%
- 5.1% - 10%
- 10.1% - 20%
- 20.1% - 50%

Topography: USGS NED

GEM
GLOBAL EARTHQUAKE MODEL
working together to assess risk

Jason R. Patton
earthjay.com © 2019

USGS
science for a changing world