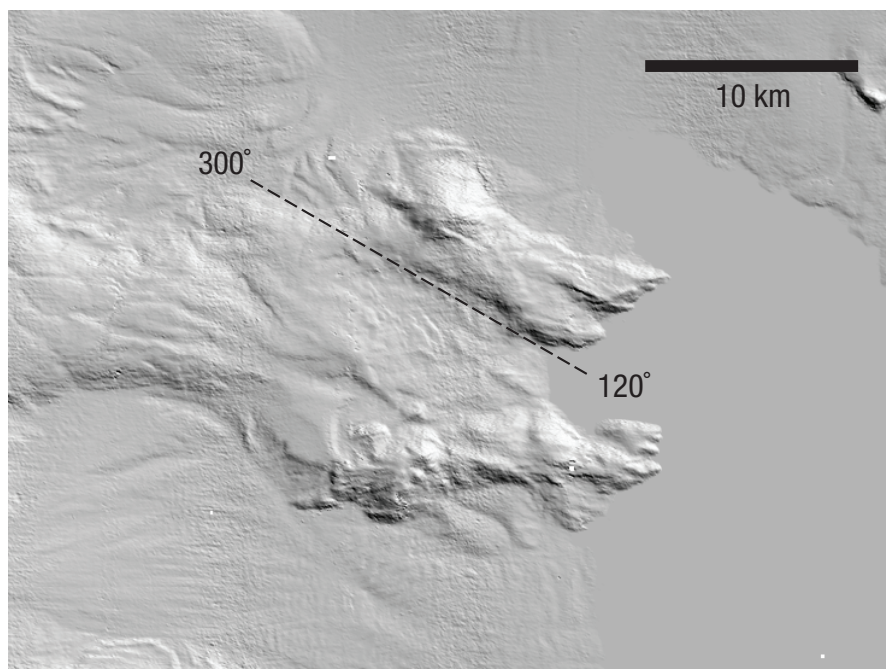


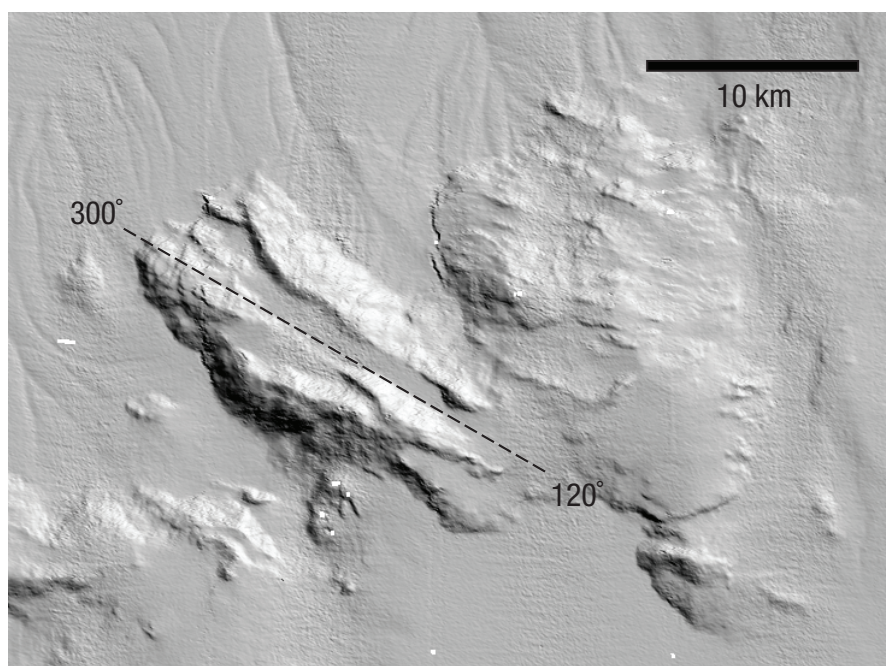
Pownall et al.

## Rolling open Earth's deepest forearc basin

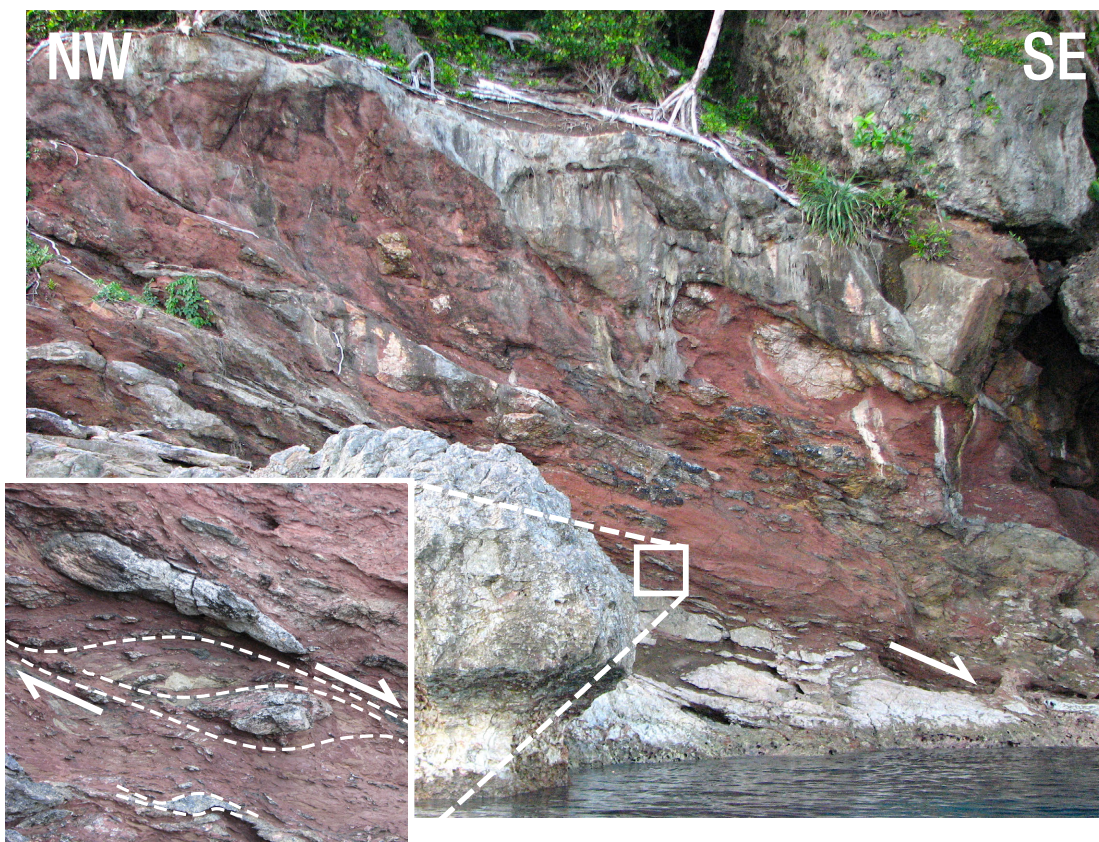
### DATA REPOSITORY ITEMS



**Figure DR1.** Enlargement of yellow box 'DR1' in Figure 1. Normal fault scarp grooves have 300–120° orientation.



**Figure DR2.** Enlargement of yellow box 'DR2' in Figure 1. Normal fault scarp grooves have 300–120° orientation.



**Figure DR3. Low-angle extensional normal shear zone, south Kasiui ( $131.6776^{\circ}\text{E}$ ,  $4.5394^{\circ}\text{S}$ ), dipping  $20^{\circ}$  to  $345^{\circ}\text{NNW}$ . Enlarged box is 0.6 m wide.**



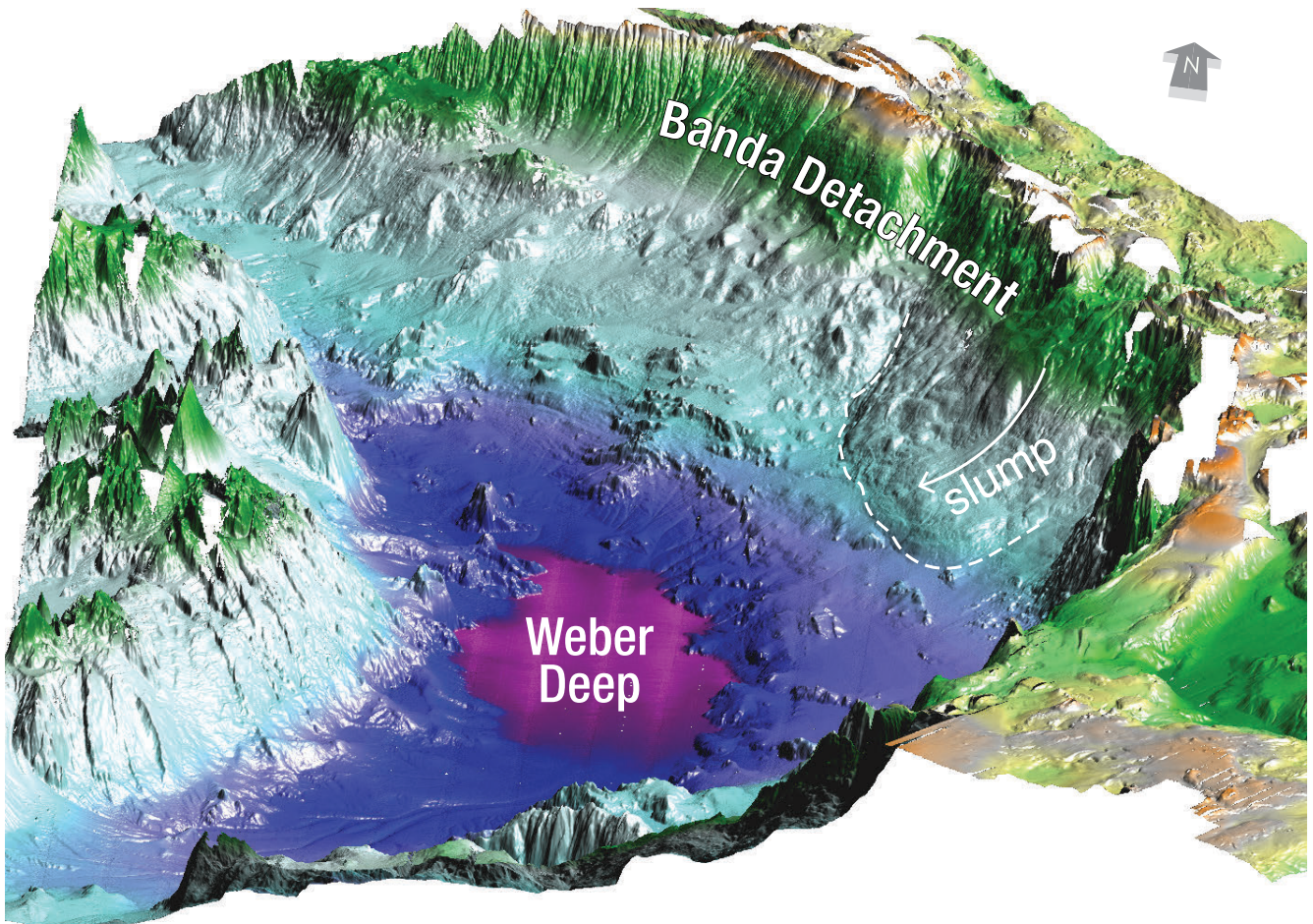


Figure DR4. 3D visualization of the Weber Deep, produced from the MULTIBEAM data used also in Fig. 1.