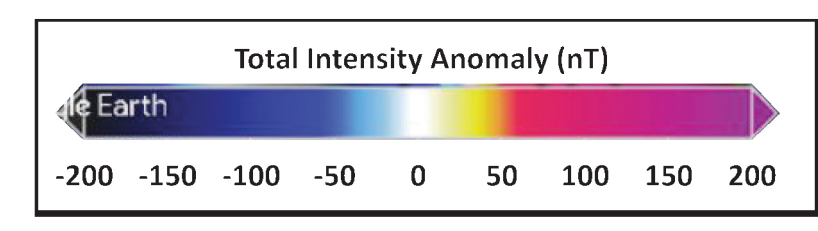


Earthquake Report: 2019.06.24

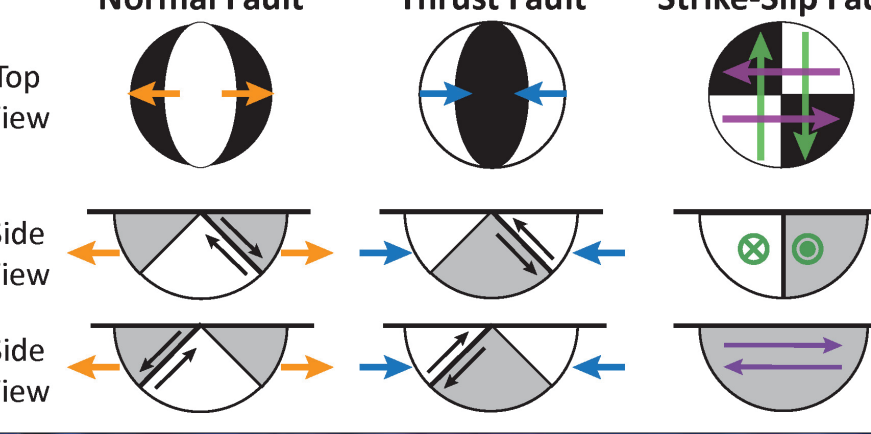
M 7.3 Banda Sea



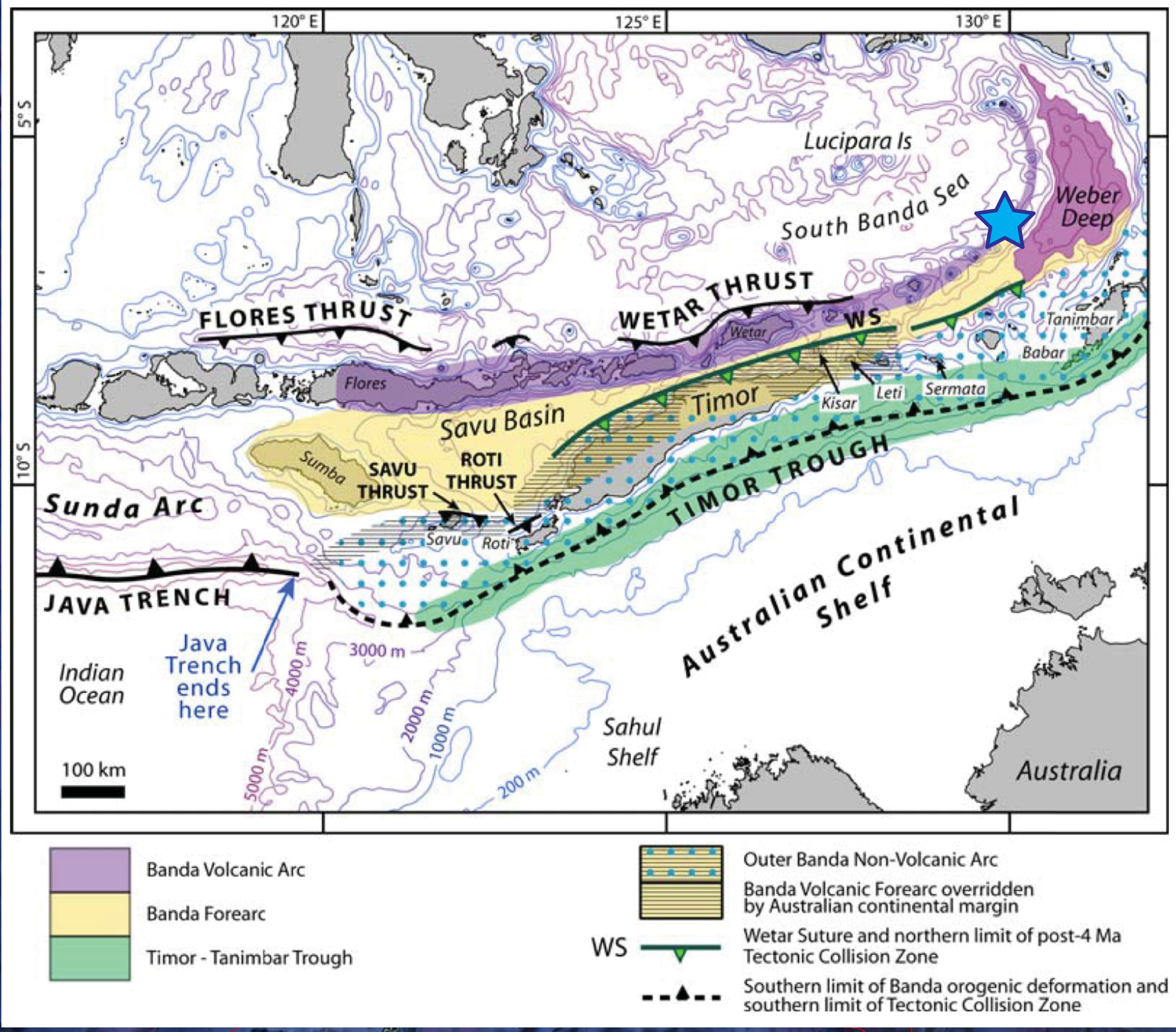
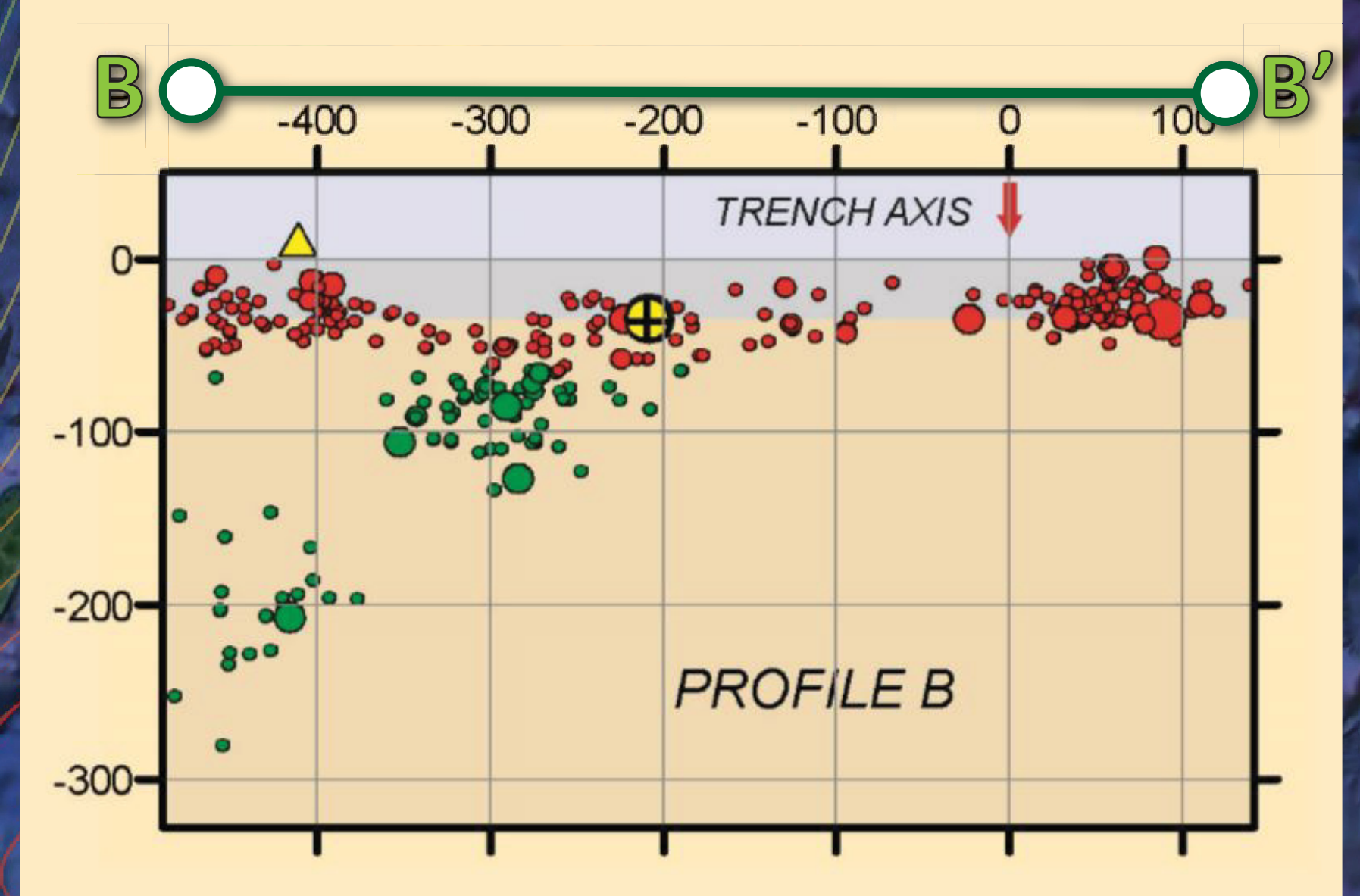
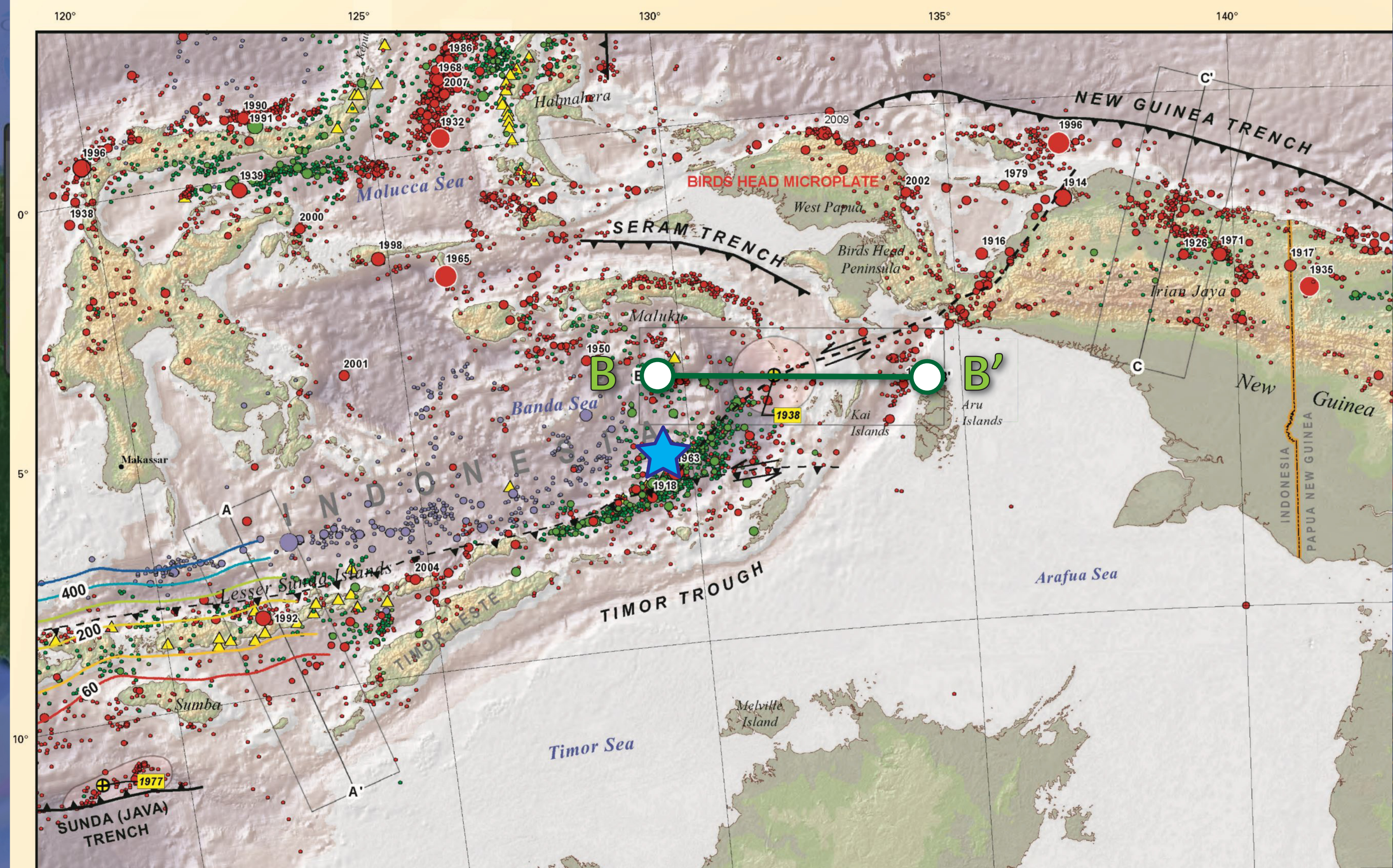
Jason R. Patton
earthjay.com © 2019

USGS Google Earth

Depth to Slab (km)
0 50 100 150 200 250 300 350 400 450 500 550 600 650 700

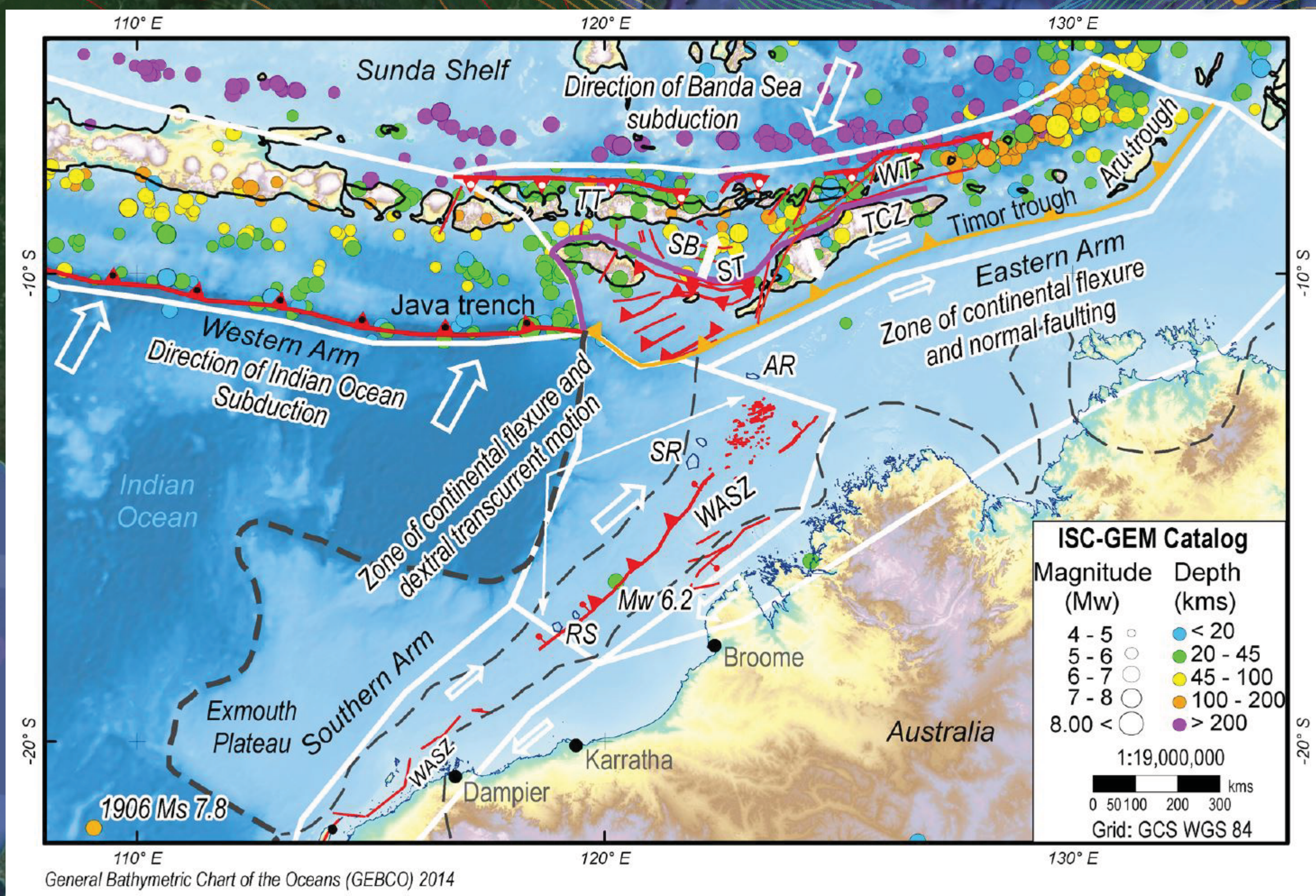
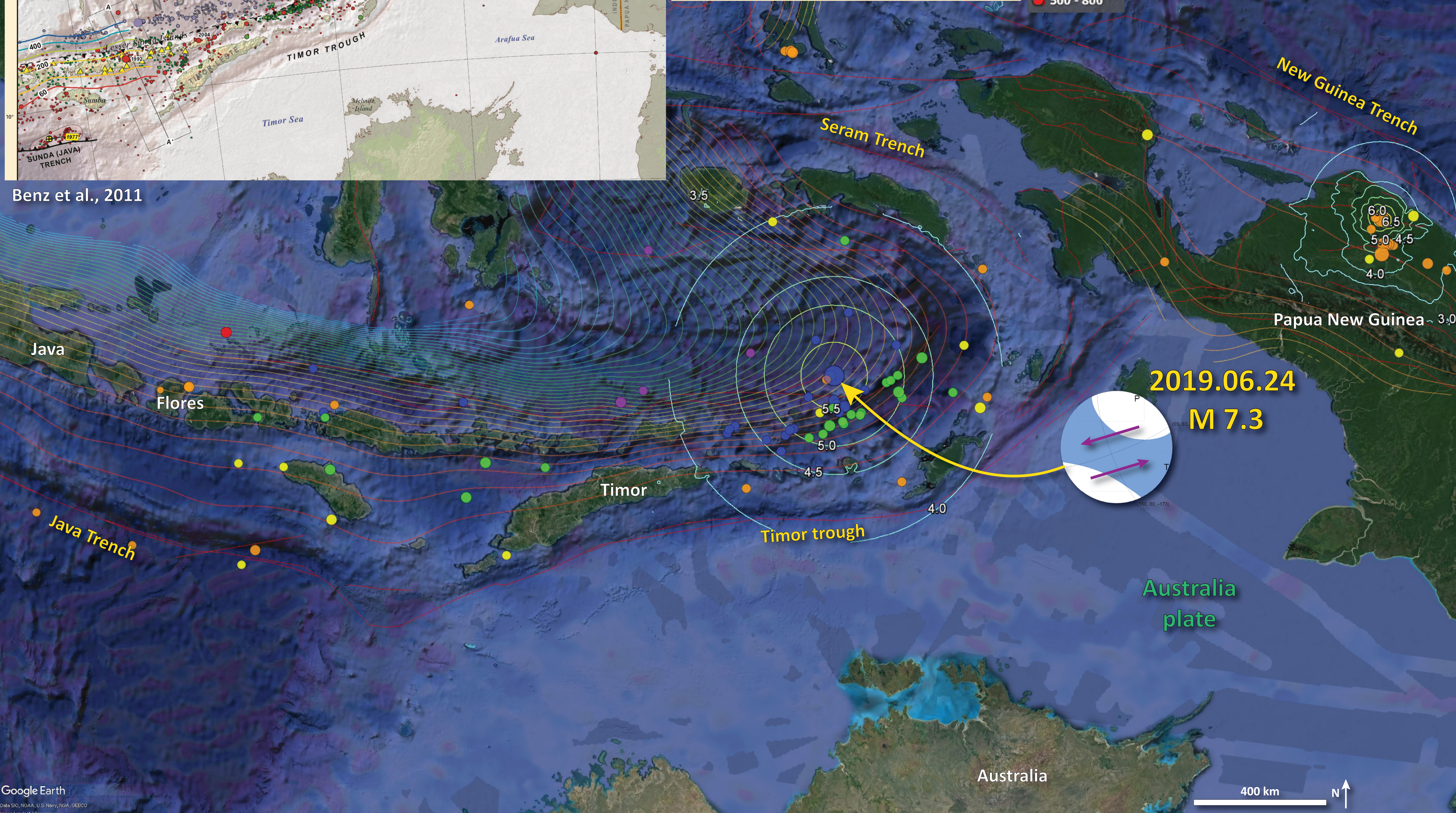


SHAKING	Not felt	Weak	Light	Moderate	Strong	Very strong	Severe	Violent	Extreme
DAMAGE	None	None	None	Very light	Light	Moderate	Moderate/heavy	Heavy	Very heavy
PGA(%g)	<0.05	0.3	2.76	6.2	11.5	21.5	40.1	74.7	>139
PGV(cm/s)	<0.02	0.13	1.41	4.65	9.64	20	41.4	85.8	>178
INTENSITY	I	II-III	IV	V	VI	VII	VIII	IX	X+



Benz et al., 2011

Audley, 2011



ISC-GEM Catalog

Magnitude (Mw) Depth (kms)

4 - 5 < 20

5 - 6 20 - 45

6 - 7 45 - 100

7 - 8 100 - 200

8.00 > 200

1:19,000,000

0 50 100 200 300 kms

Grid: GCS WGS 84