

Earthquake Report: 2018.02.25 **Aftershock Update**

M 7.5 Papua New Guinea (& USGS Seismicity 1918-2018 M ≥ 6.5)



Jason R. Patton  
earthjay.com © 2018

USGS Google Earth

Depth to Slab (km)

Magnitude

Depth (km)

- 0 - 33
- 33 - 70
- 70 - 150
- 150 - 300
- 300 - 500
- 500 - 800

Plate Boundaries

- Divergent
- Transform
- Convergent
- Other

Plate Motion

Normal Fault

Thrust Fault

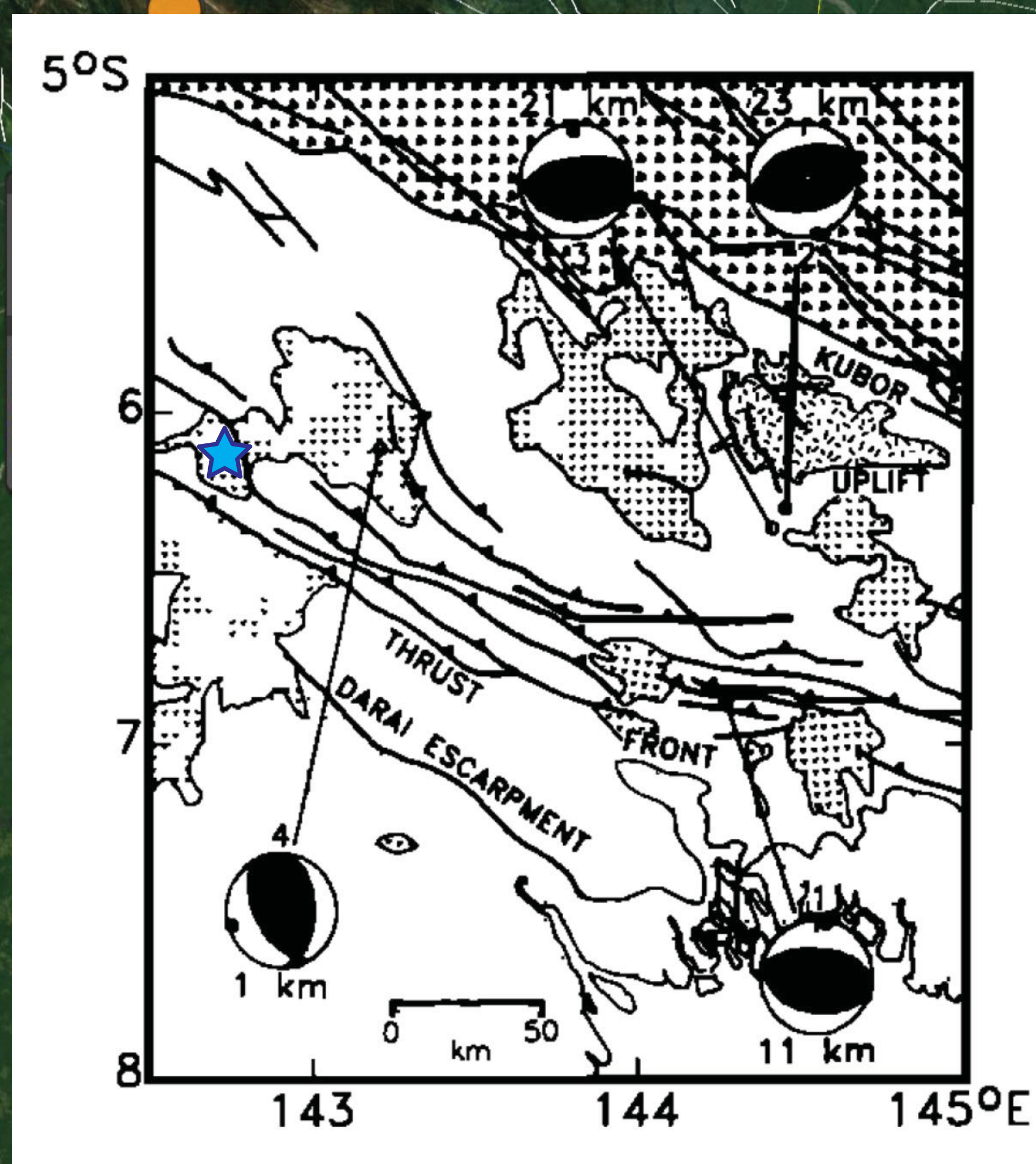
Strike-Slip Fault

Top View

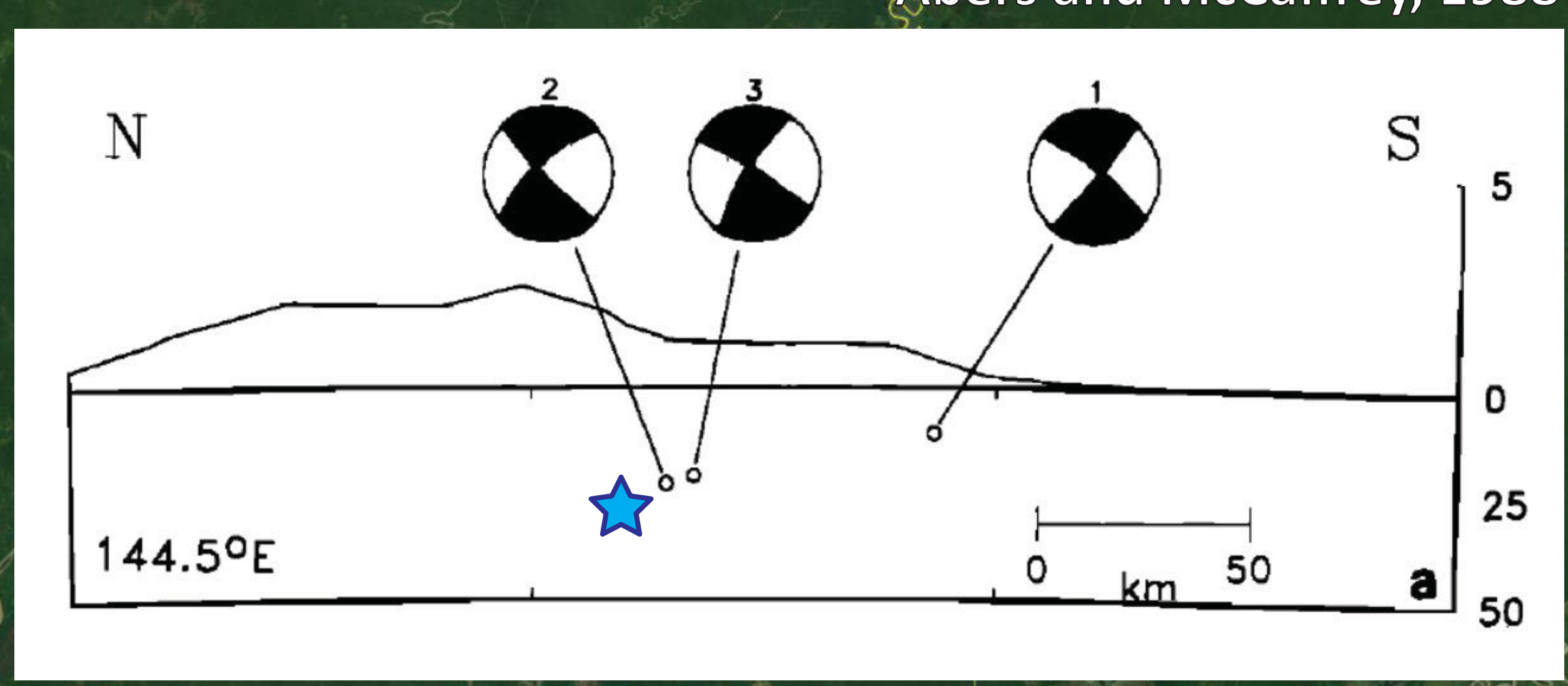
Side View

INTENSITY	I	II-III	IV	V	VI	VII	VIII	IX	X+
Shaking	Not felt	Weak	Light	Moderate	Strong	Very Strong	Severe	Violent	Extreme
Damage	None	None	None	Very slight	Light	Moderate	Moderate/heavy	Heavy	Very heavy
Peak Acc	<0.17	0.17-1.4	1.4-3.9	3.9-9.2	9.2-18	18-34	34-65	65-124	>124
Peak Vel	<0.1	0.1-1.1	1.1-3.4	3.4-8.1	8.1-16	16-31	31-60	60-116	>116

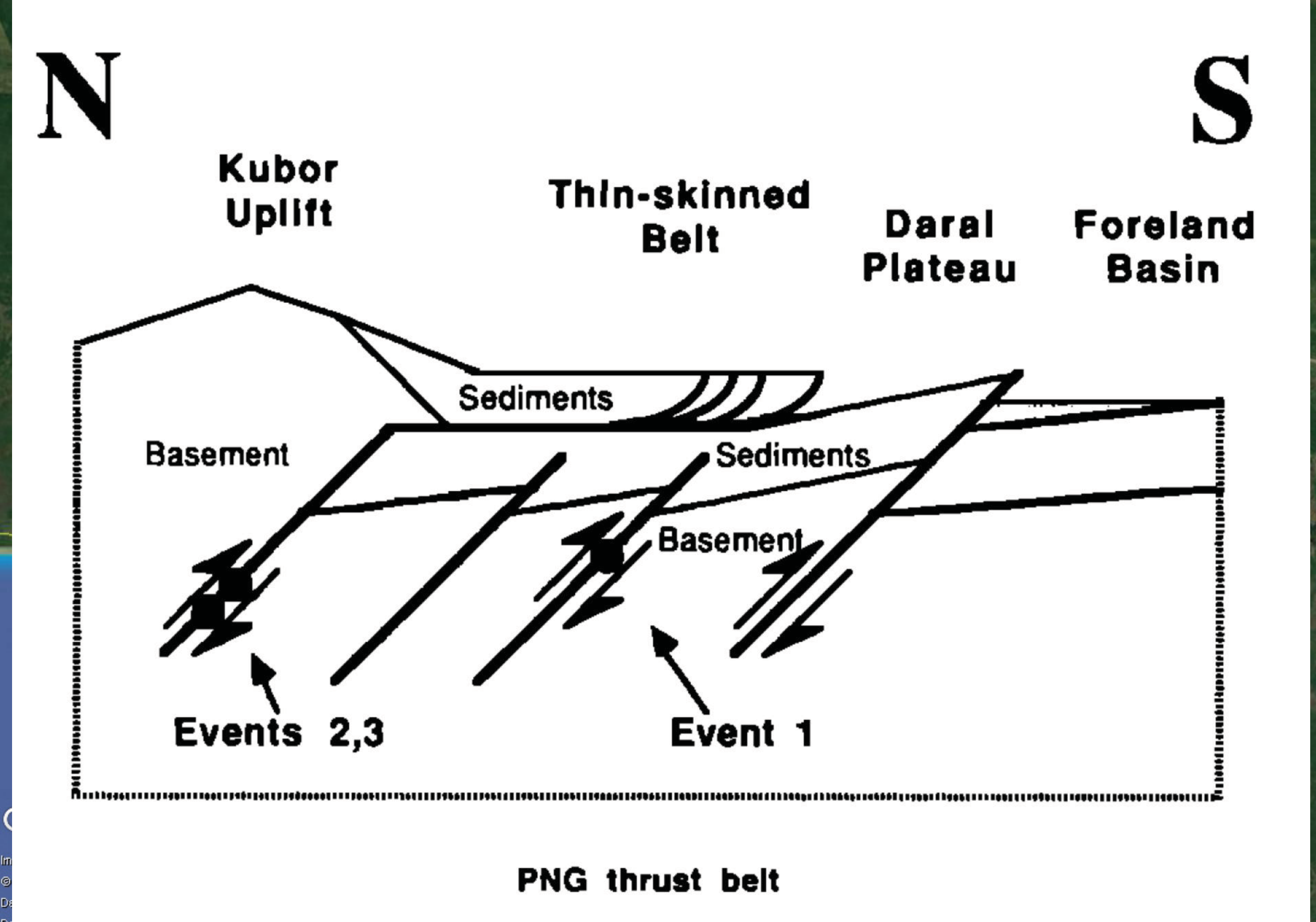
Peak Acc = Peak ground acceleration (g), Peak Vel = Peak ground velocity (cm/s)



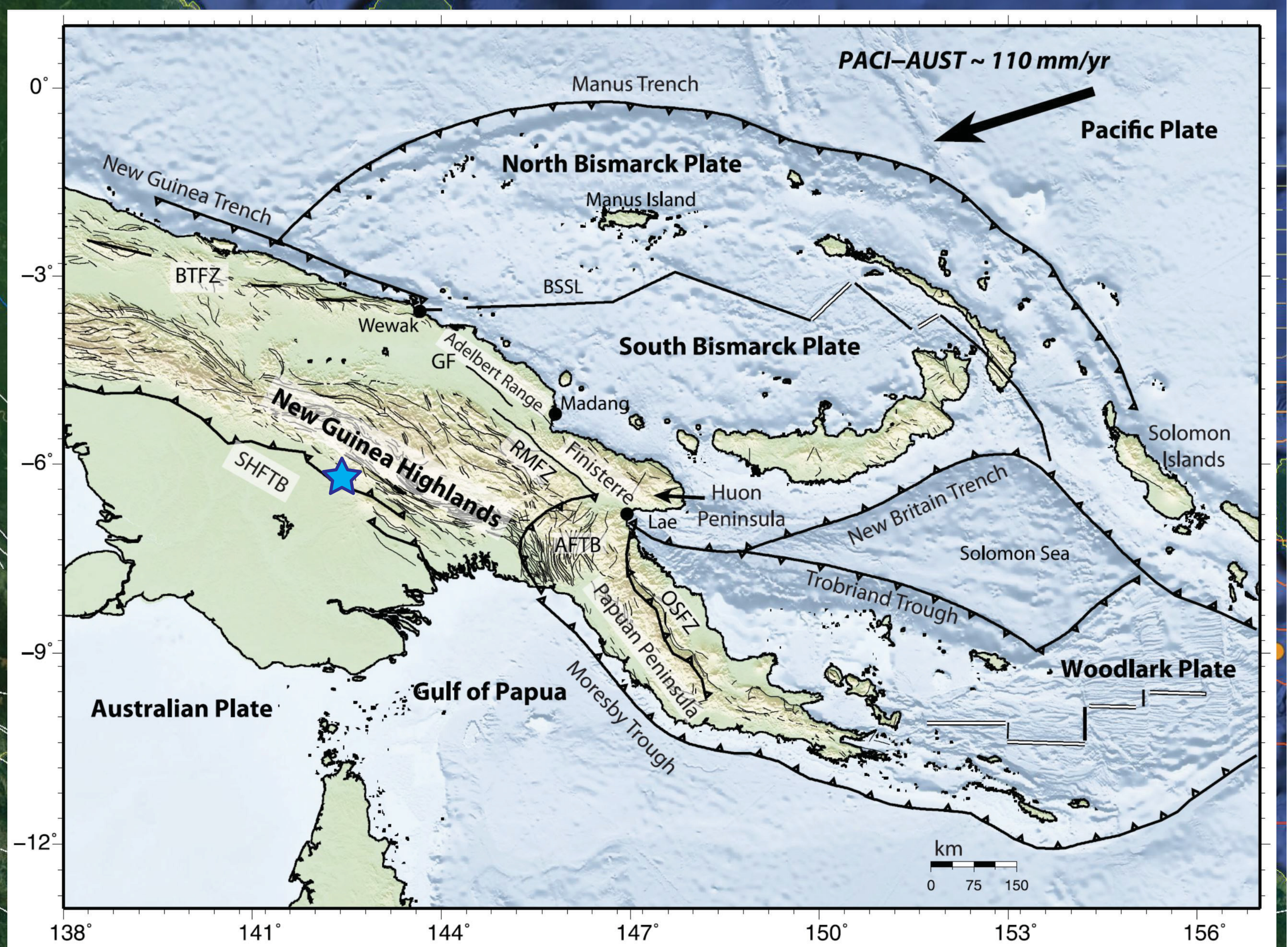
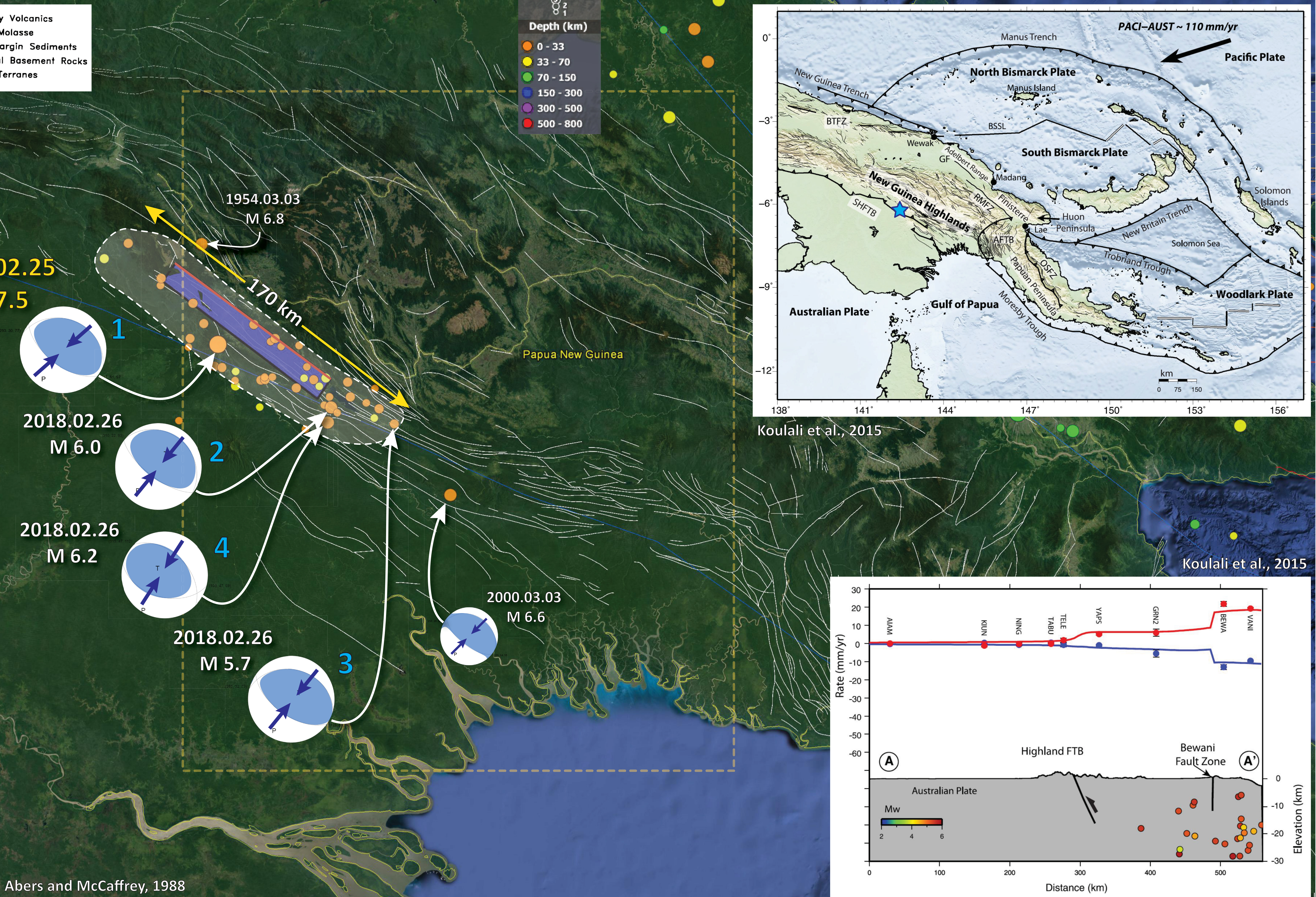
Abers and McCaffrey, 1988



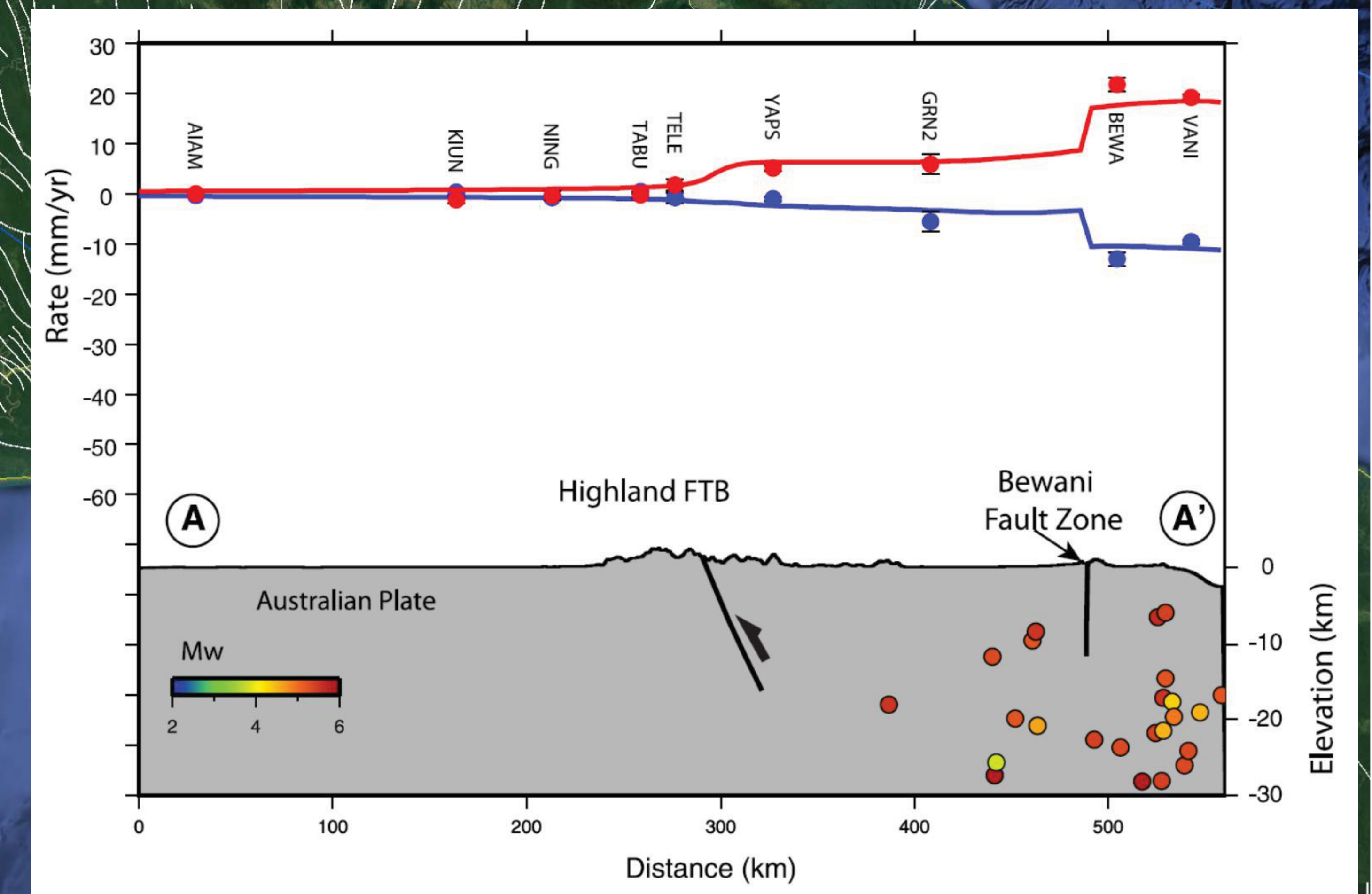
Abers and McCaffrey, 1988



Abers and McCaffrey, 1988



Koulali et al., 2015



Koulali et al., 2015