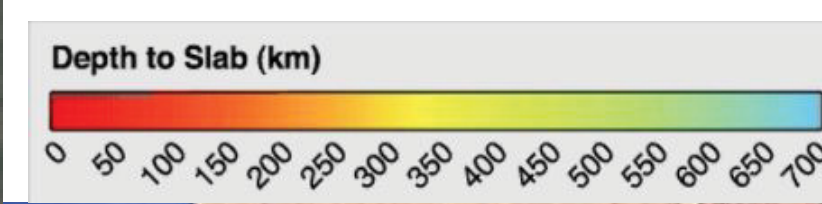


Earthquake Report: 2017.08.18

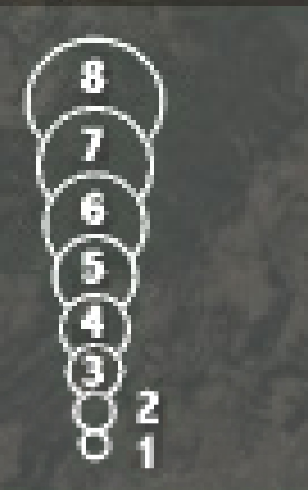
M 6.6 Mid Atlantic Ridge (and USGS earthquakes 1900-2016 M > 6.0)

Jason R. Patton
earthjay.com © 2017

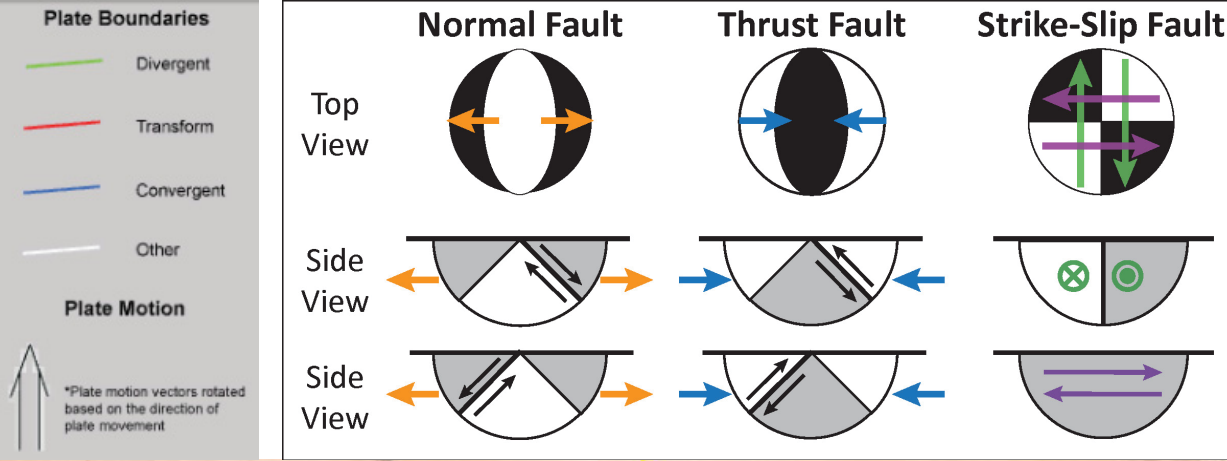
USGS Google Earth



Magnitude

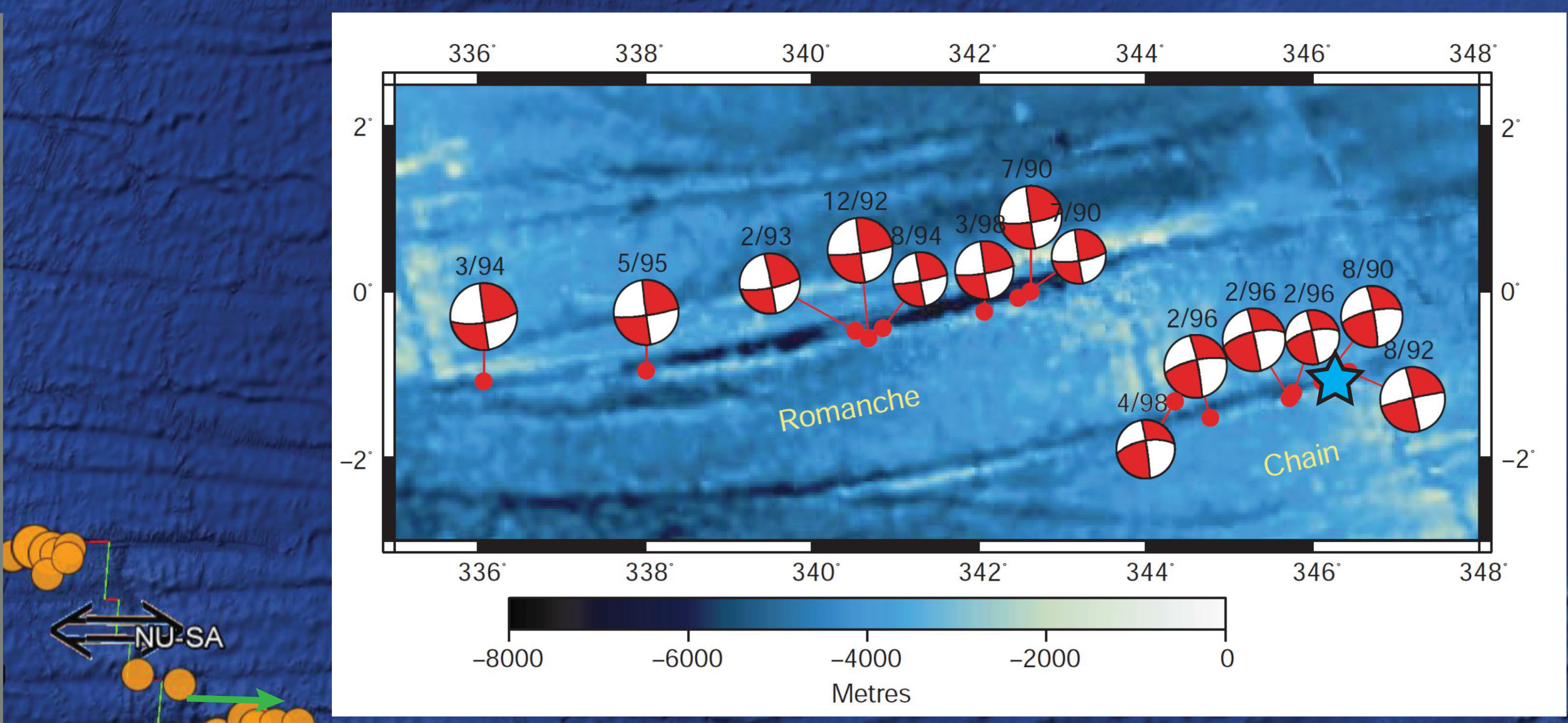
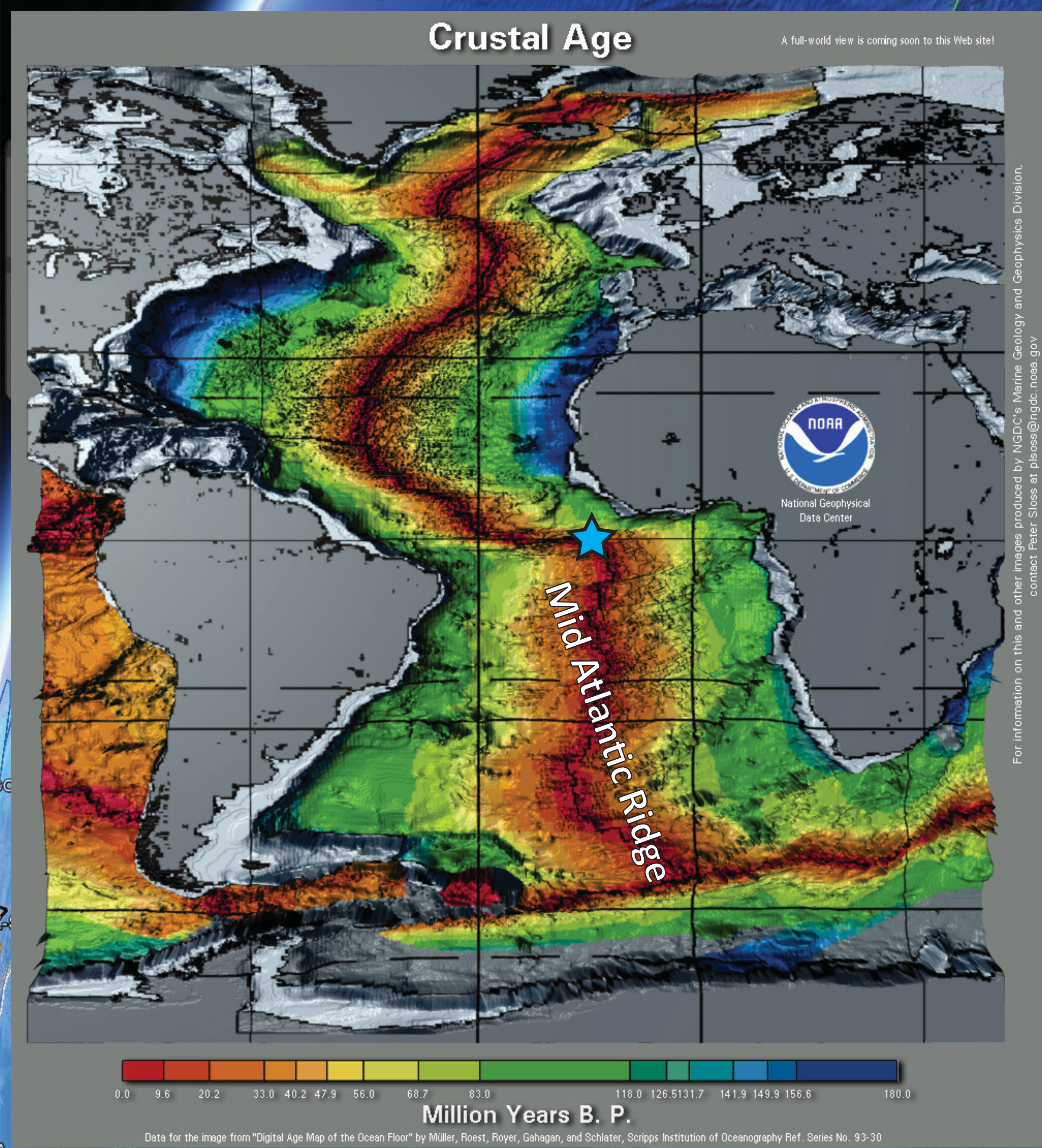


Depth (km)

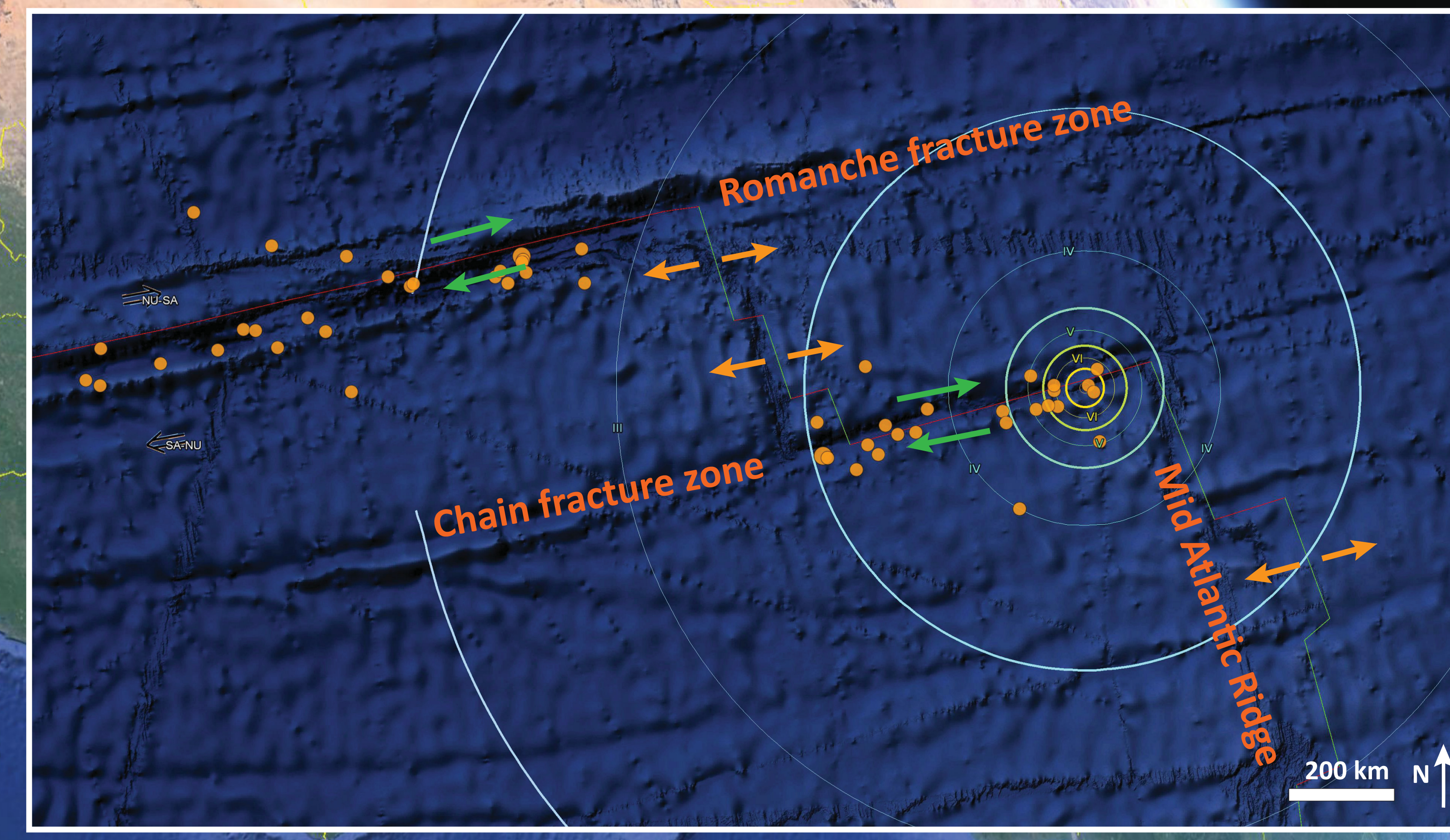


INTENSITY	I	II-III	IV	V	VI	VII	VIII	IX	X+
Shaking	Not felt	Weak	Light	Moderate	Strong	Very Strong	Severe	Violent	Extreme
Damage	None	None	None	Very slight	Light	Moderate	Moderate/heavy	Heavy	Very heavy
Peak Acc	<0.17	0.17-1.4	1.4-3.9	3.9-9.2	9.2-18	18-34	34-65	65-124	>124
Peak Vel	<0.1	0.1-1.1	1.1-3.4	3.4-8.1	8.1-16	16-31	31-60	60-116	>116

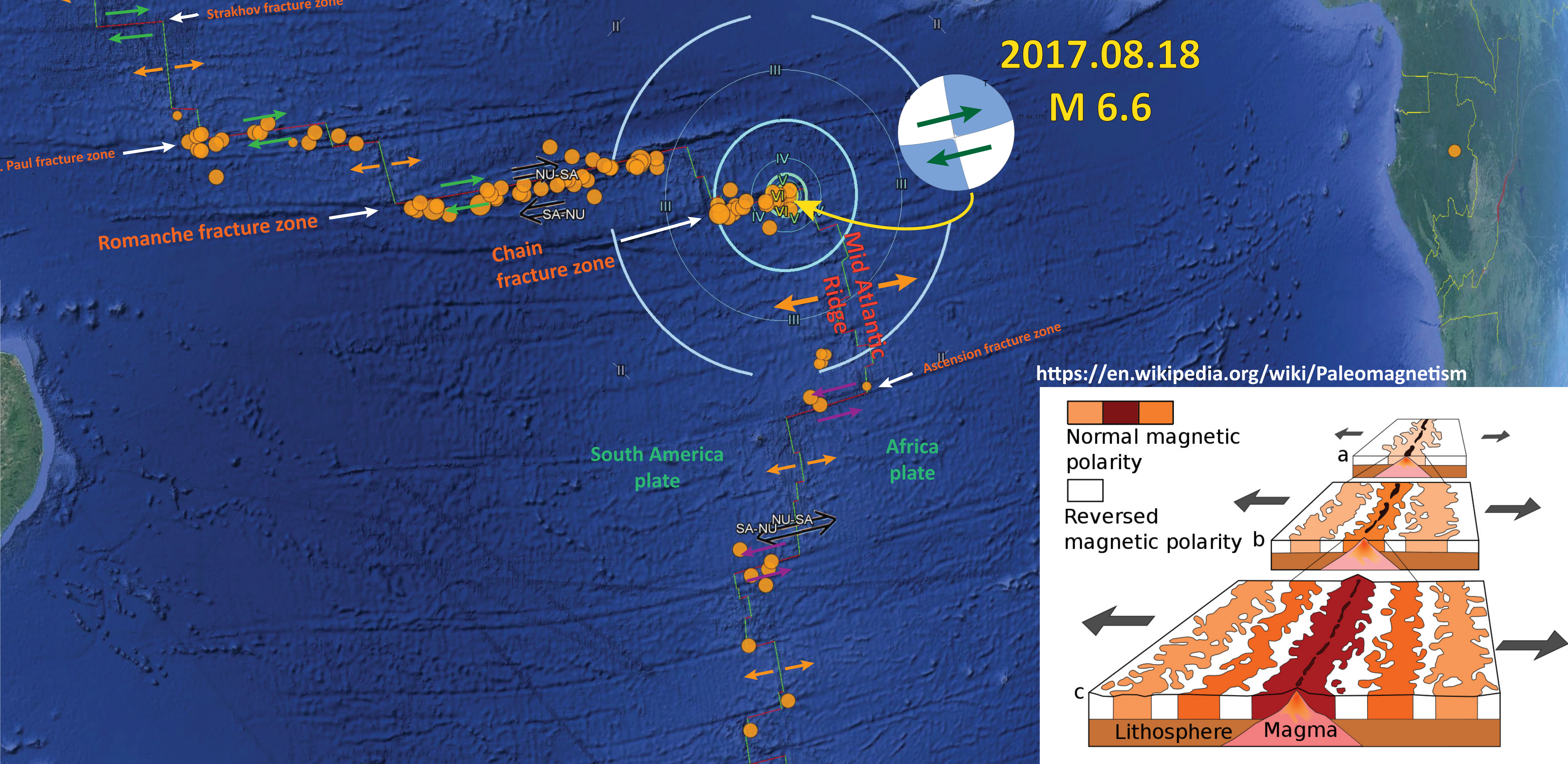
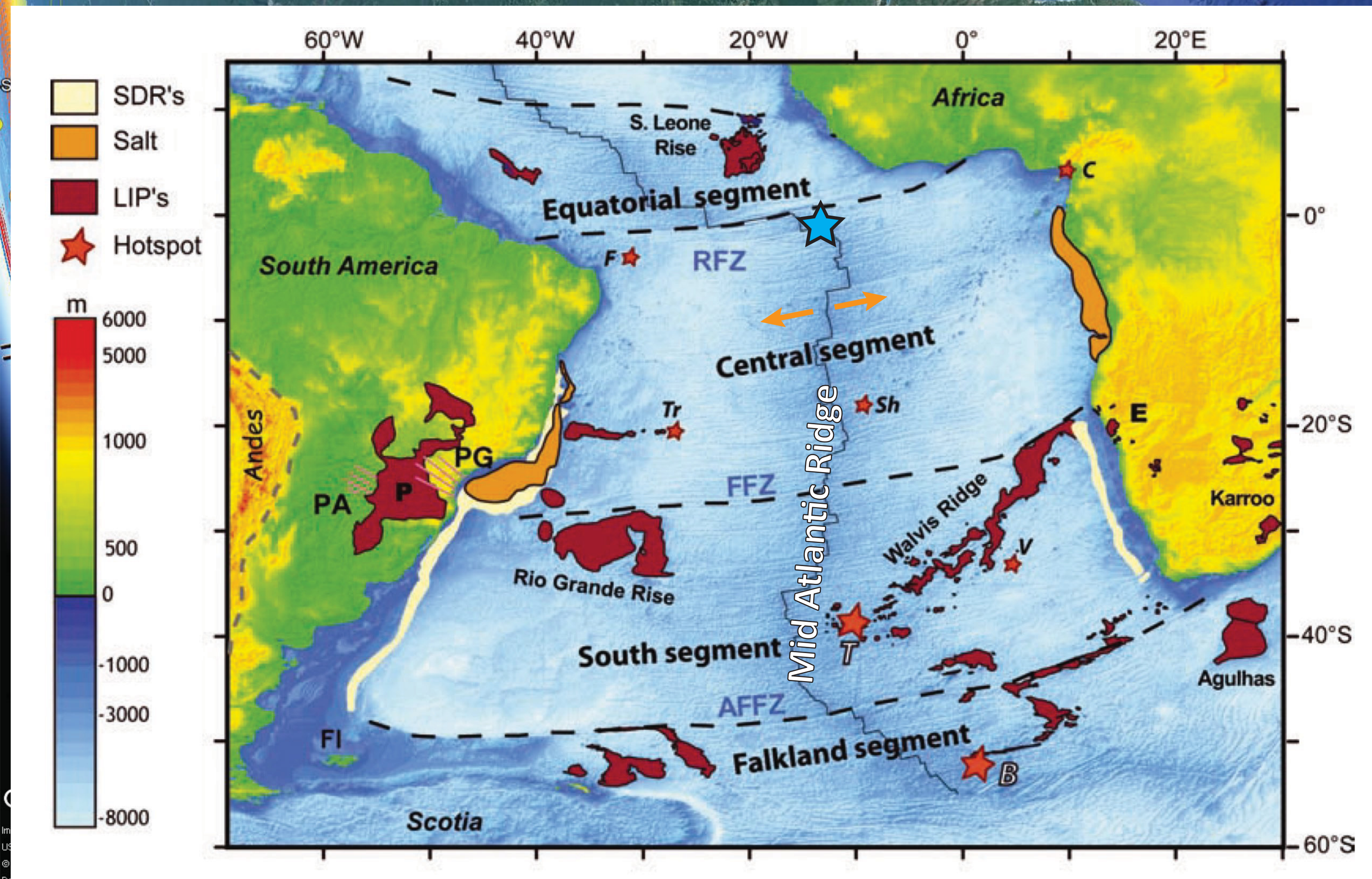
Peak Acc = Peak ground acceleration (g), Peak Vel = Peak ground velocity (cm/s)



Abercrombie and Ekstrom, 2001



Torsvik et al., 2009



2017.08.18
M 6.6

<https://en.wikipedia.org/wiki/Paleomagnetism>

