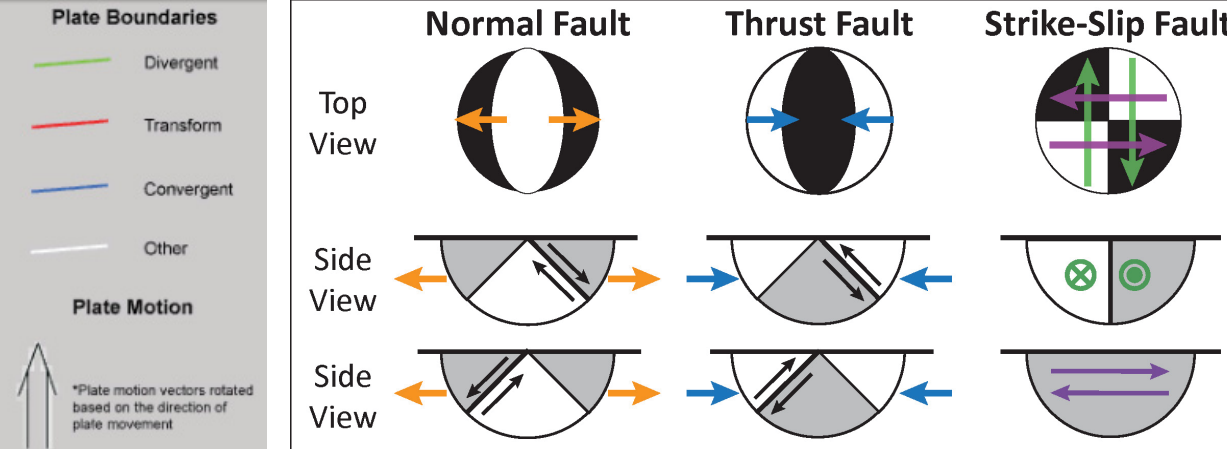


Earthquake Report: 2017.05.08

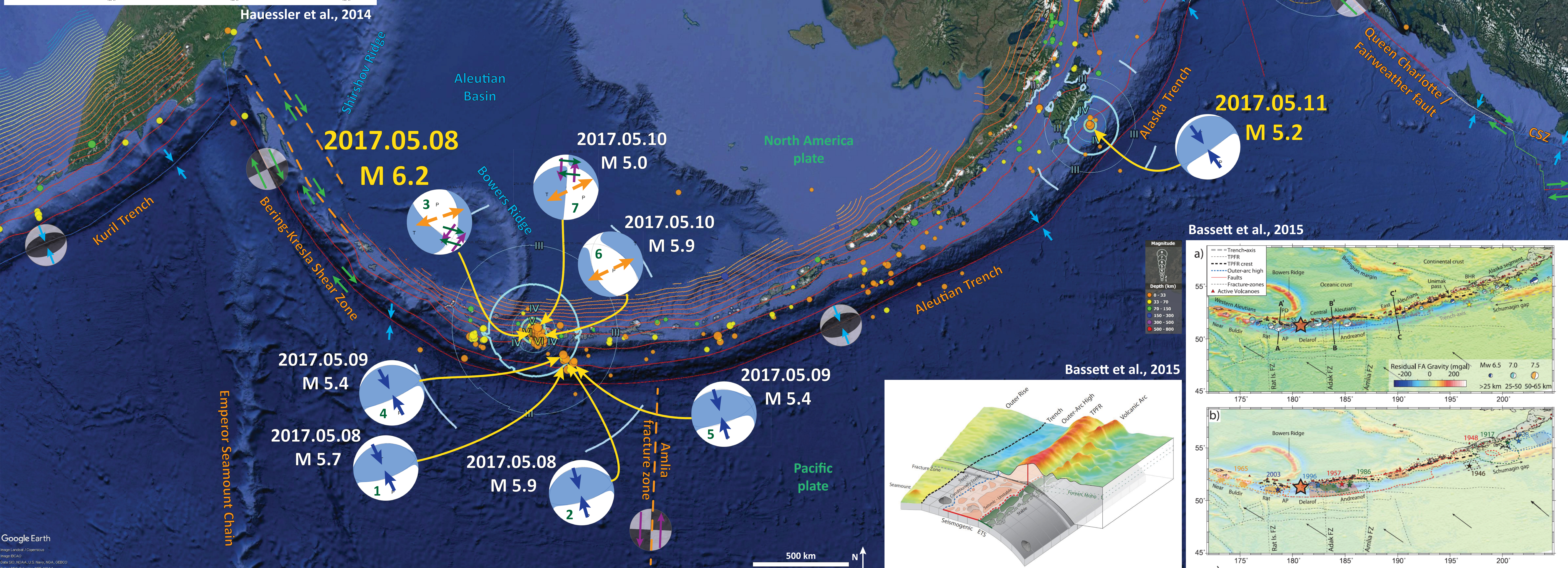
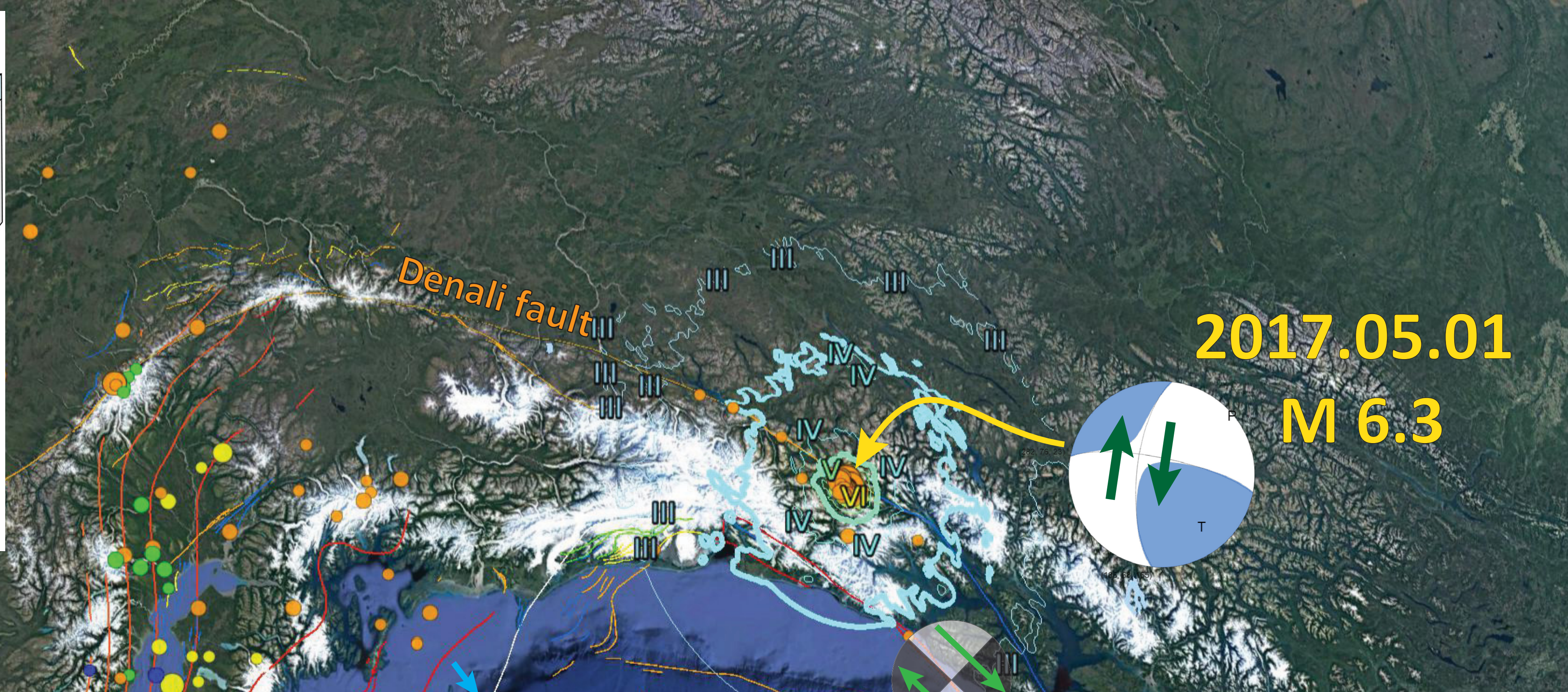
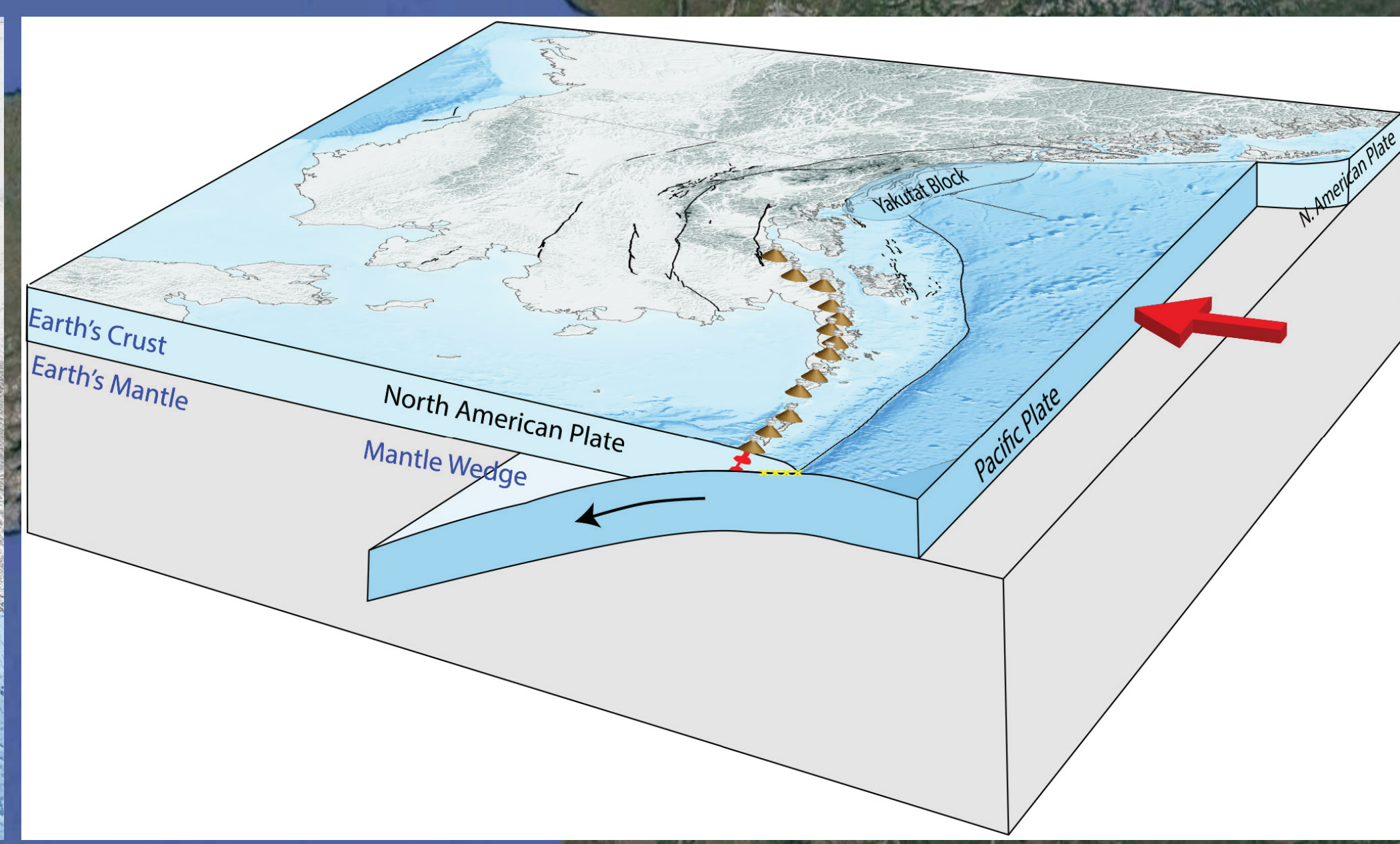
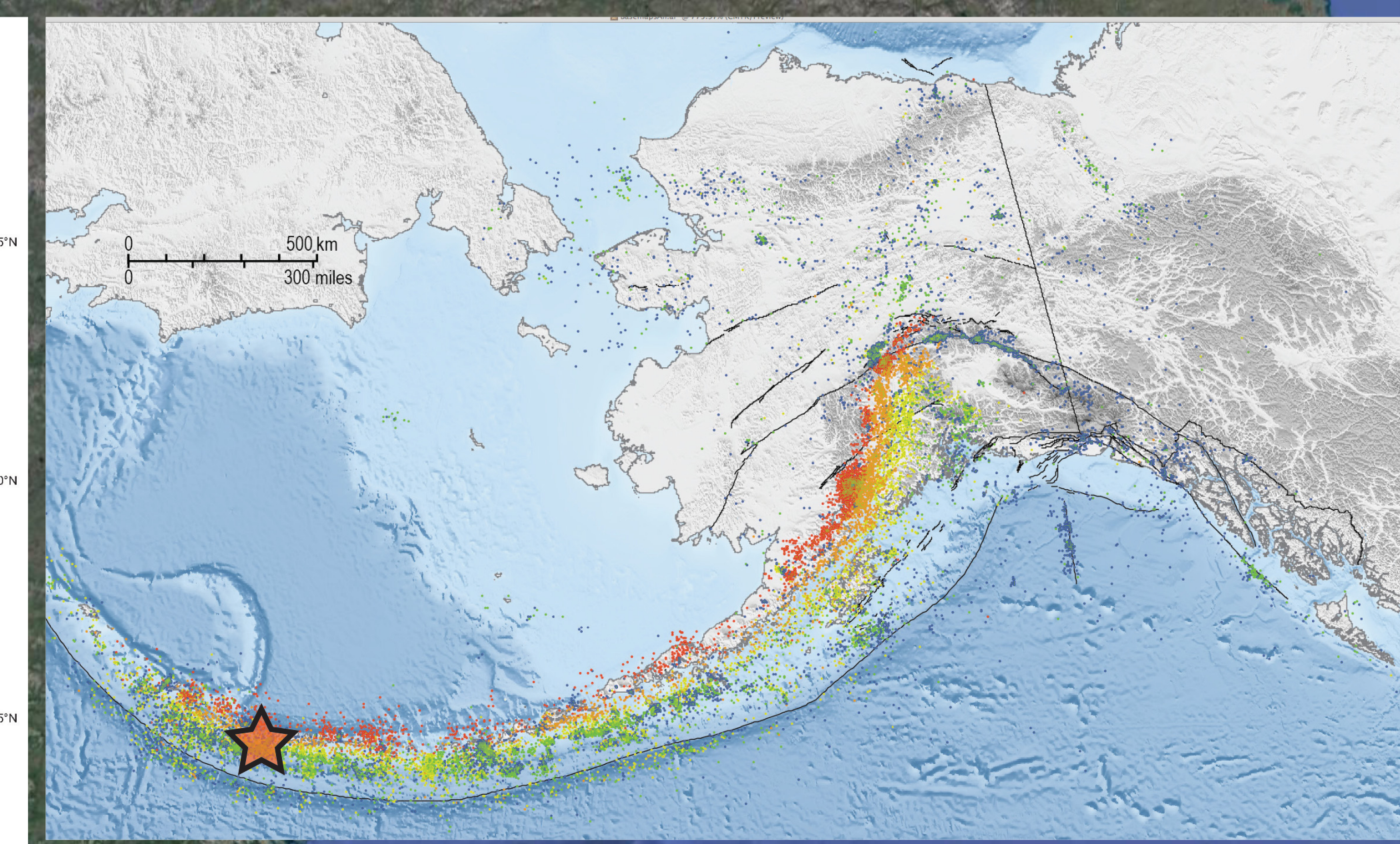
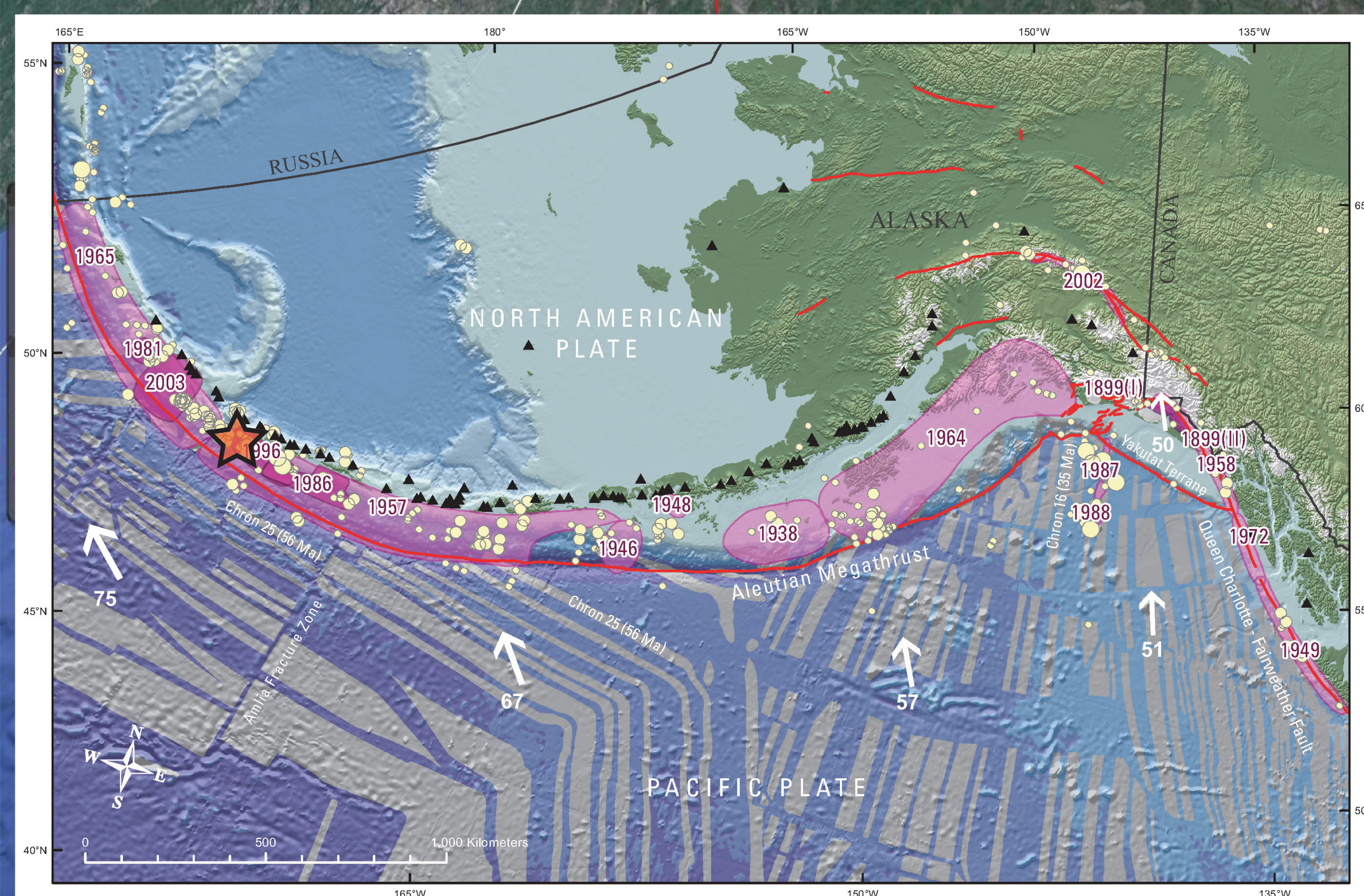
M 6.2 Aleutians (with M 5.2 in Kodiak with a Denali fault M 6.2/6.3 cameo)

Jason R. Patton
earthjay.com © 2017
USGS Google Earth



INTENSITY	I	II-III	IV	V	VI	VII	VIII	IX	X+
Shaking	Not felt	Weak	Light	Moderate	Strong	Very Strong	Severe	Violent	Extreme
Damage	None	None	None	Very light	Light	Moderate	Moderate/heavy	Heavy	Very heavy
Peak Acc	<0.17	0.17-1.4	1.4-3.9	3.9-9.2	9.2-18	18-34	34-65	65-124	>124
Peak Vel	<0.1	0.1-1.1	1.1-3.4	3.4-8.1	8.1-16	16-31	31-60	60-116	>116

Peak Acc = Peak ground acceleration (g). Peak Vel = Peak ground velocity (cm/s)



Hauessler et al., 2014

IRIS, 2015

IRIS, 2015

2017.05.11
M 5.2

2017.05.08
M 6.2

2017.05.10
M 5.0

2017.05.10
M 5.9

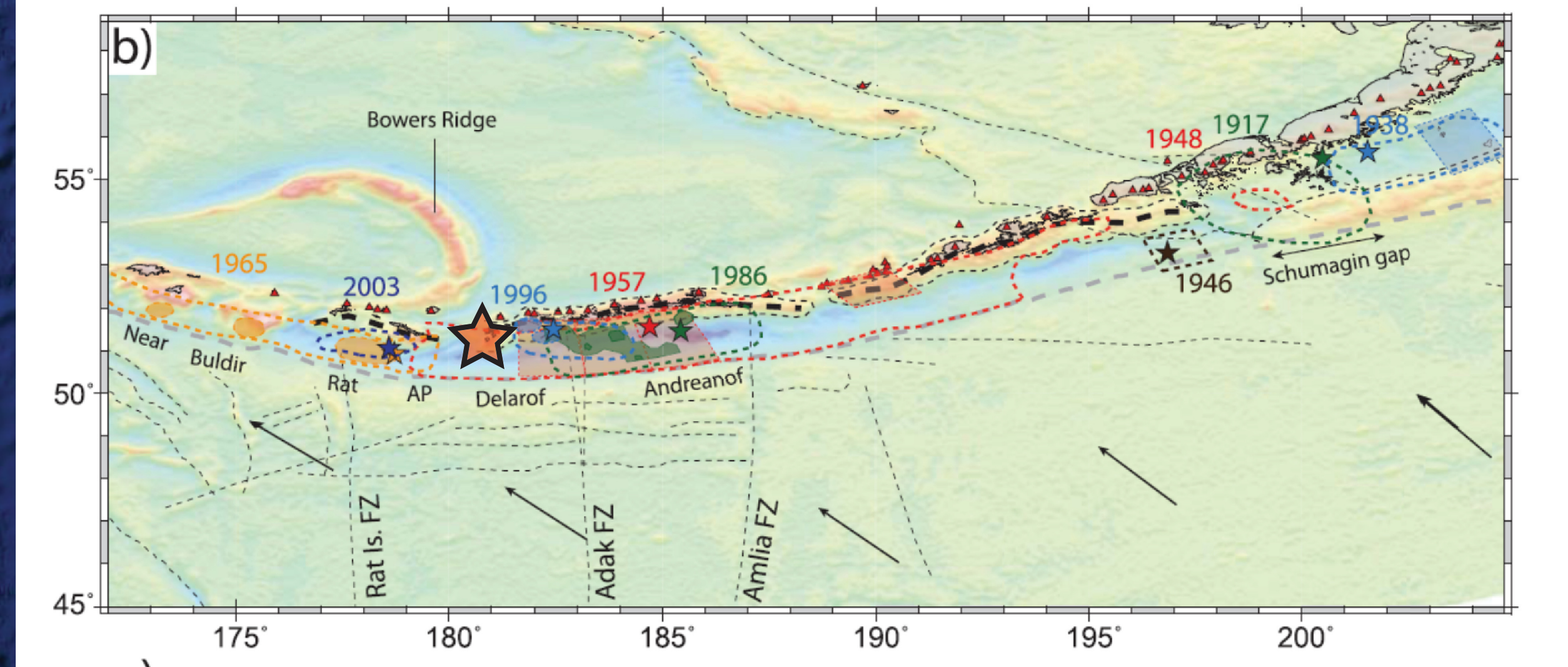
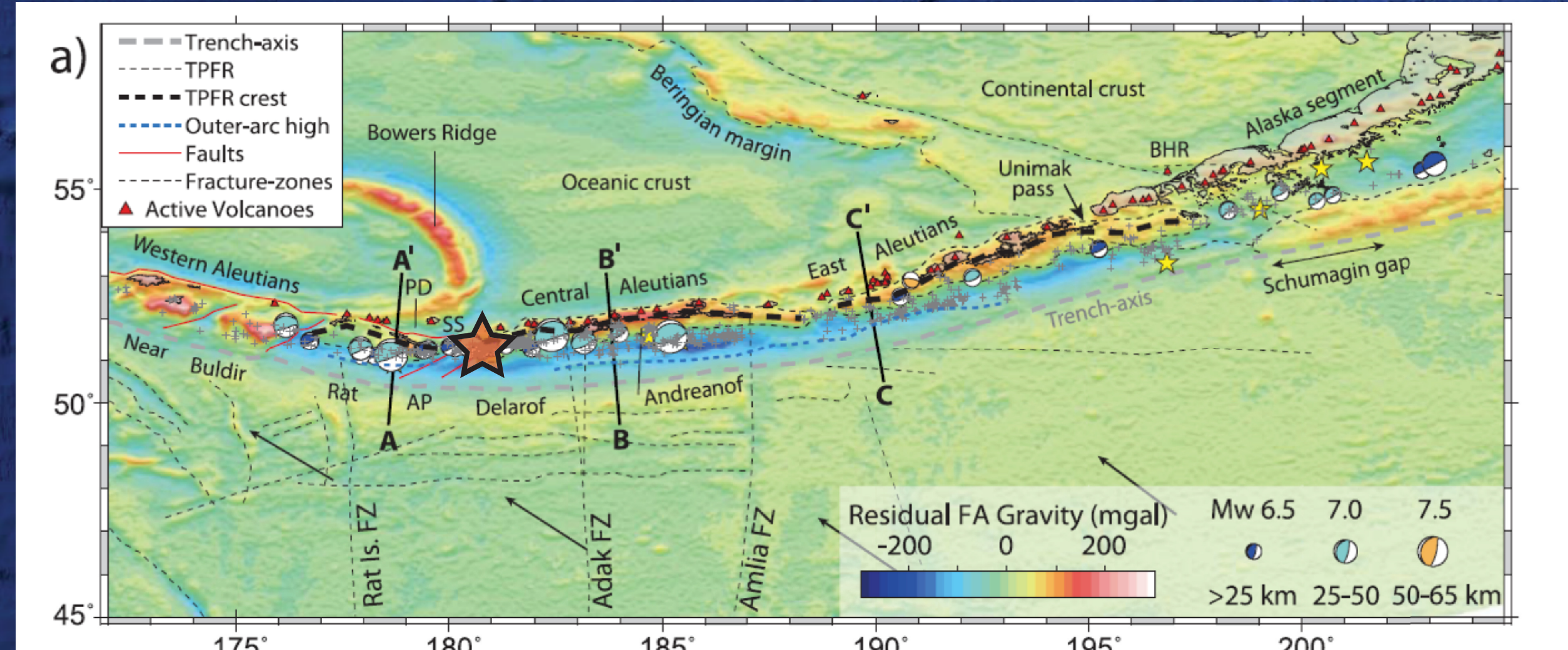
2017.05.09
M 5.4

2017.05.09
M 5.4

2017.05.08
M 5.7

2017.05.08
M 5.9

Bassett et al., 2015



Bassett et al., 2015

