

# M 6.2, WESTERN HONSHU, JAPAN

Origin Time: Fri 2016-10-21 05:07:23 UTC (14:07:23 local)

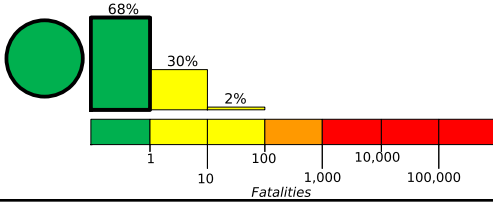
Location: 35.36°N 133.80°E Depth: 10 km

Created: 35 minutes, 52 seconds after earthquake

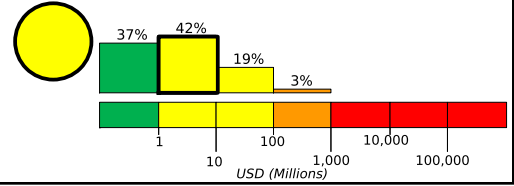
## Estimated Fatalities

Yellow alert level for economic losses. Some damage is possible and the impact should be relatively localized. Estimated economic losses are less than 1% of GDP of Japan. Past events with this alert level have required a local or regional level response.

Green alert level for shaking-related fatalities. There is a low likelihood of casualties.



## Estimated Economic Losses

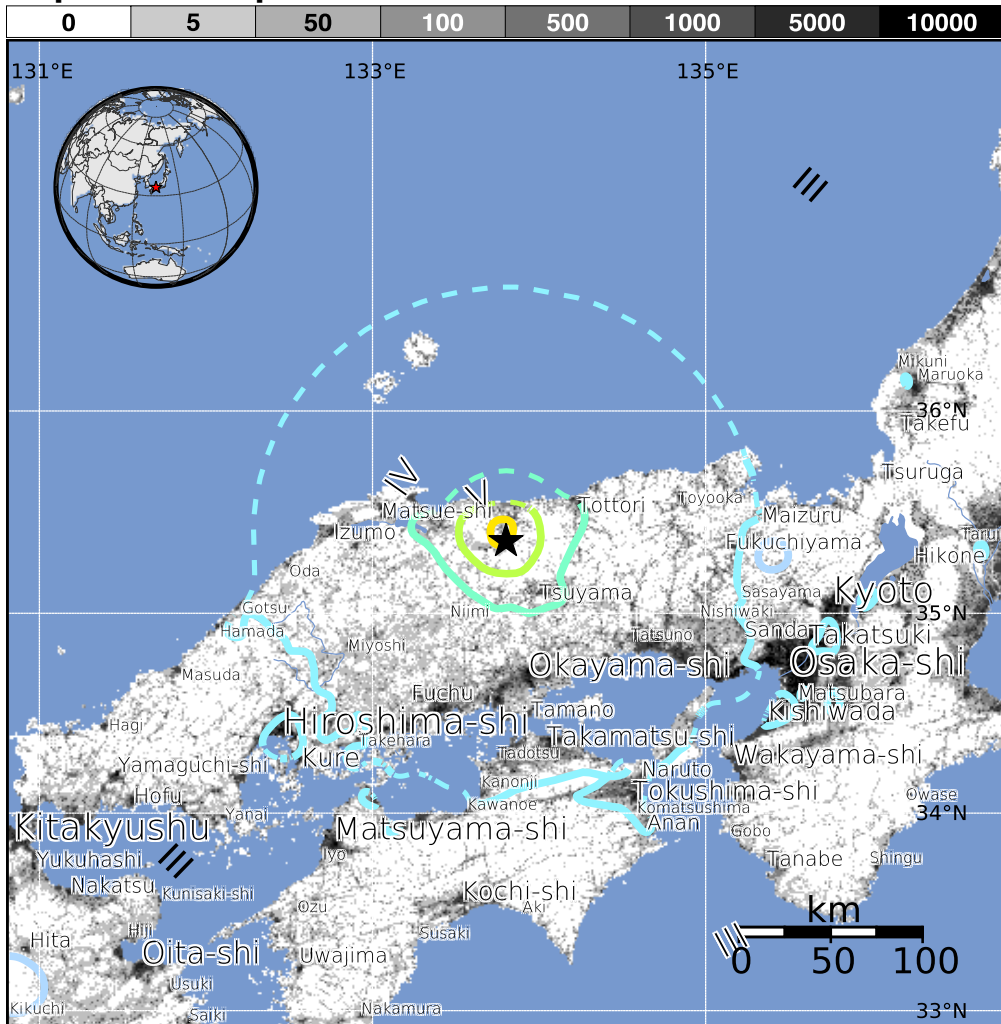


## Estimated Population Exposed to Earthquake Shaking

ESTIMATED POPULATION EXPOSURE (k = x1000)	--*	20,324k*	18,073k	601k	74k	75k	0	0	0	
ESTIMATED MODIFIED MERCALLI INTENSITY	I	II-III	IV	V	VI	VII	VIII	IX	X+	
PERCEIVED SHAKING	Not felt	Weak	Light	Moderate	Strong	Very Strong	Severe	Violent	Extreme	
POTENTIAL DAMAGE	Resistant Structures	none	none	none	V. Light	Light	Moderate	Moderate/Heavy	Heavy	V. Heavy
	Vulnerable Structures	none	none	none	Light	Moderate	Moderate/Heavy	Heavy	V. Heavy	V. Heavy

\*Estimated exposure only includes population within the map area.

## Population Exposure



### Structures:

Overall, the population in this region resides in structures that are resistant to earthquake shaking, though some vulnerable structures exist. The predominant vulnerable building types are heavy wood frame and ductile reinforced concrete frame construction.

### Historical Earthquakes (with MMI levels):

Date (UTC)	Dist. (km)	Mag.	Max MMI(#)	Shaking Deaths
1975-01-23	365	5.8	VIII(12k)	0
2001-03-24	182	6.8	VIII(5k)	2
1995-01-16	139	6.9	IX(1,740k)	6k

Recent earthquakes in this area have caused secondary hazards such as landslides, fires, and liquefaction that might have contributed to losses.

## Selected City Exposure

from GeoNames.org

MMI	City	Population
VII	Kurayoshi	48k
V	Yonago	141k
V	Tsuyama	90k
V	Soja	57k
IV	Matsue-shi	157k
IV	Tottori	154k
IV	Okayama-shi	640k
IV	Hiroshima-shi	1,144k
III	Kobe-shi	1,528k
III	Kyoto	1,460k
III	Osaka-shi	2,592k

bold cities appear on map

(k = x1000)

PAGER content is automatically generated, and only considers losses due to structural damage. Limitations of input data, shaking estimates, and loss models may add uncertainty.

<http://earthquake.usgs.gov/earthquakes/eventpage/us20007fta>

Event ID: us20007fta