

140°E

150°E

160°E

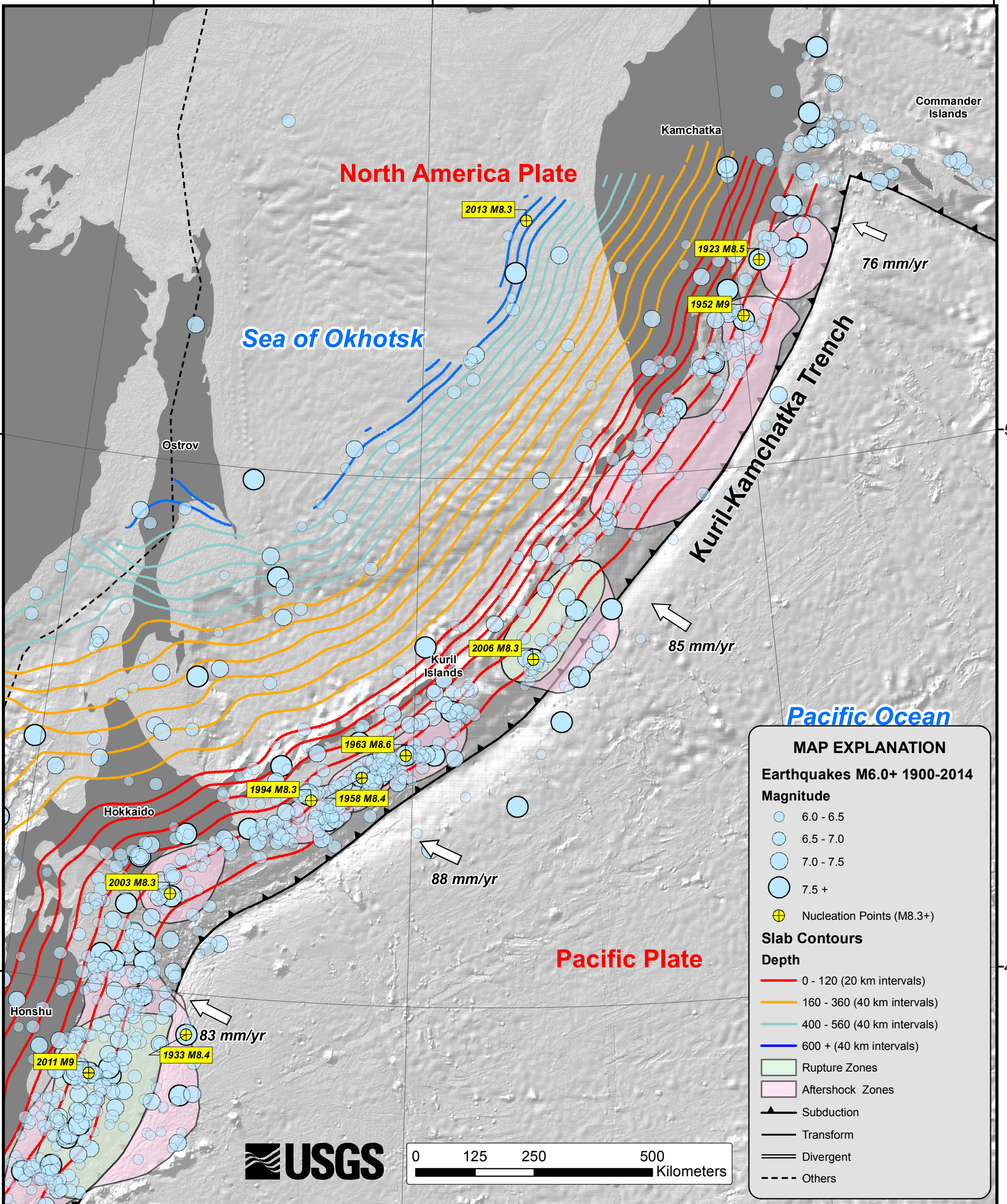
170°E

50°N

50°N

40°N

40°N



North America Plate

Sea of Okhotsk

Kamchatka

Commander Islands

Ostrov

Kuril Islands

Hokkaido

Honshu

Kuril-Kamchatka Trench

Pacific Plate

Pacific Ocean

MAP EXPLANATION

Earthquakes M6.0+ 1900-2014

Magnitude

- 6.0 - 6.5
- 6.5 - 7.0
- 7.0 - 7.5
- 7.5 +
- ⊕ Nucleation Points (M8.3+)

Slab Contours

Depth

- 0 - 120 (20 km intervals)
- 160 - 360 (40 km intervals)
- 400 - 560 (40 km intervals)
- 600 + (40 km intervals)

- Rupture Zones
- Aftershock Zones
- ▲ Subduction
- Transform
- Divergent
- - - Others

