

M 6.7, PERU-BRAZIL BORDER REGION

Origin Time: Thu 2015-11-26 05:45:18 UTC (00:45:18 local)

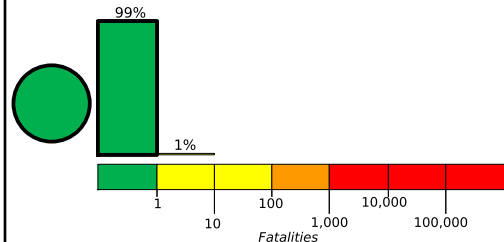
Location: 9.19°S 71.29°W Depth: 599 km

PAGER
Version 3

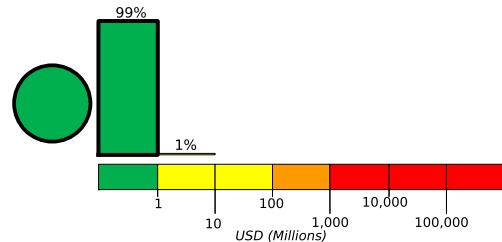
Created: 2 hours, 3 minutes after earthquake

Estimated Fatalities

Green alert for shaking-related fatalities and economic losses. There is a low likelihood of casualties and damage.



Estimated Economic Losses

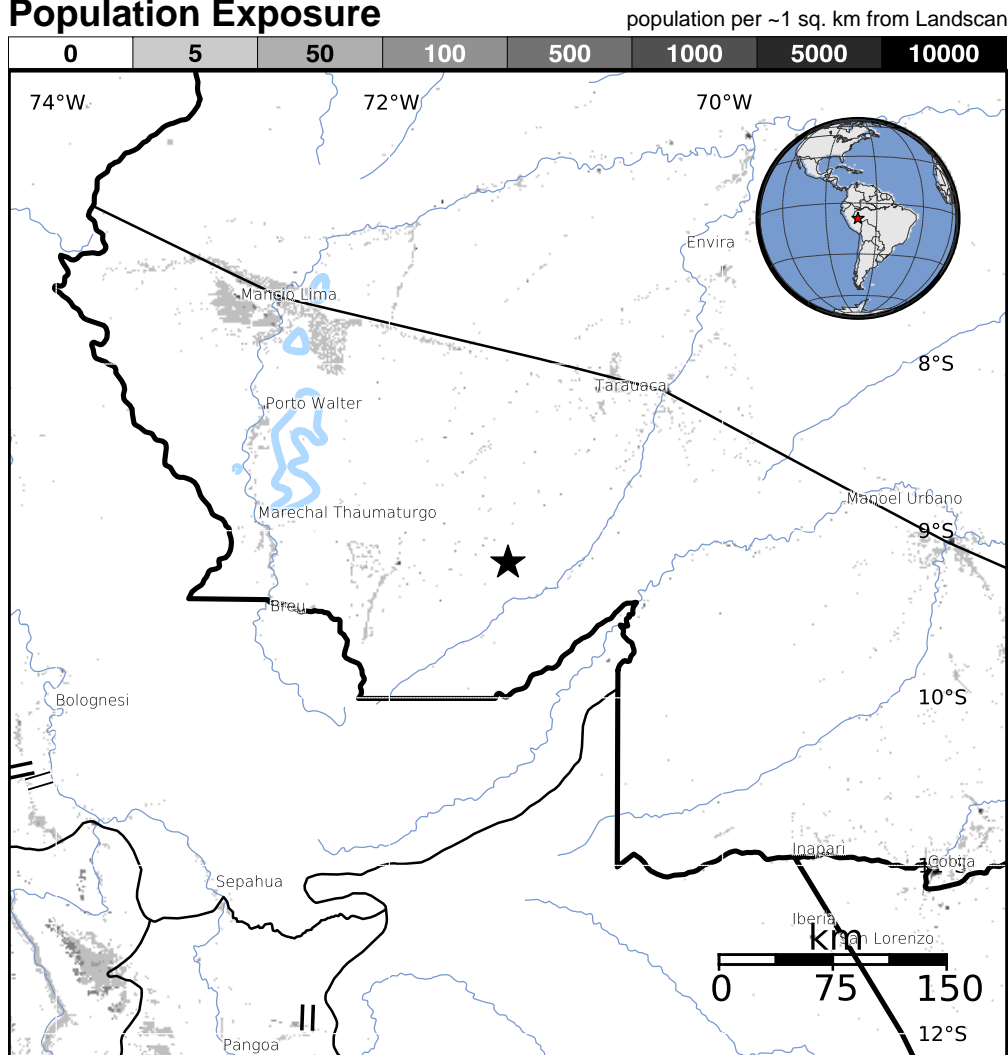


Estimated Population Exposed to Earthquake Shaking

ESTIMATED POPULATION EXPOSURE (k = x1000)		- -*	702k	0	0	0	0	0	0	0
ESTIMATED MODIFIED MERCALLI INTENSITY		I	II-III	IV	V	VI	VII	VIII	IX	X+
PERCEIVED SHAKING		Not felt	Weak	Light	Moderate	Strong	Very Strong	Severe	Violent	Extreme
POTENTIAL DAMAGE	Resistant Structures	none	none	none	V. Light	Light	Moderate	Moderate/Heavy	Heavy	V. Heavy
	Vulnerable Structures	none	none	none	Light	Moderate	Moderate/Heavy	Heavy	V. Heavy	V. Heavy

*Estimated exposure only includes population within the map area.

Population Exposure



Structures:

Overall, the population in this region resides in structures that are vulnerable to earthquake shaking, though some resistant structures exist.

Historical Earthquakes (with MMI levels):

Date (UTC)	Dist. (km)	Mag.	Max MMI(#)	Shaking Deaths
1998-02-19	383	5.8	VII(168)	0
1998-01-10	318	6.2	VIII(111)	0

Selected City Exposure

from GeoNames.org

MMI	City	Population
III	Tarauaca	17k
II	Porto Walter	2k
II	Feijo	13k
II	Bolognesi	< 1k
II	Mancio Lima	7k
II	Eirunepe	17k
II	Sena Madureira	21k
II	Envira	10k
II	Brasileia	11k
II	Cobija	27k
II	Pangoa	7k

bold cities appear on map

(k = x1000)

PAGER content is automatically generated, and only considers losses due to structural damage. Limitations of input data, shaking estimates, and loss models may add uncertainty.

<http://earthquake.usgs.gov/pager>

Event ID: us100041f1