

# M 4.2, 11.1 km (6.9 mi) NNE of Lewiston, CA

Origin Time: Fri 2015-05-29 07:05:35 UTC (00:05:35 local)

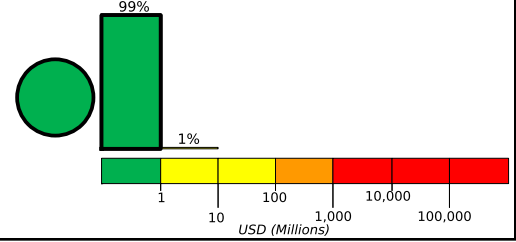
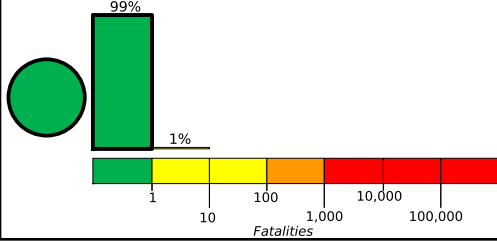
Location: 40.80°N 122.77°W Depth: 5 km

Created: 7 minutes, 37 seconds after earthquake

## Estimated Fatalities

Green alert for shaking-related fatalities and economic losses. There is a low likelihood of casualties and damage.

## Estimated Economic Losses

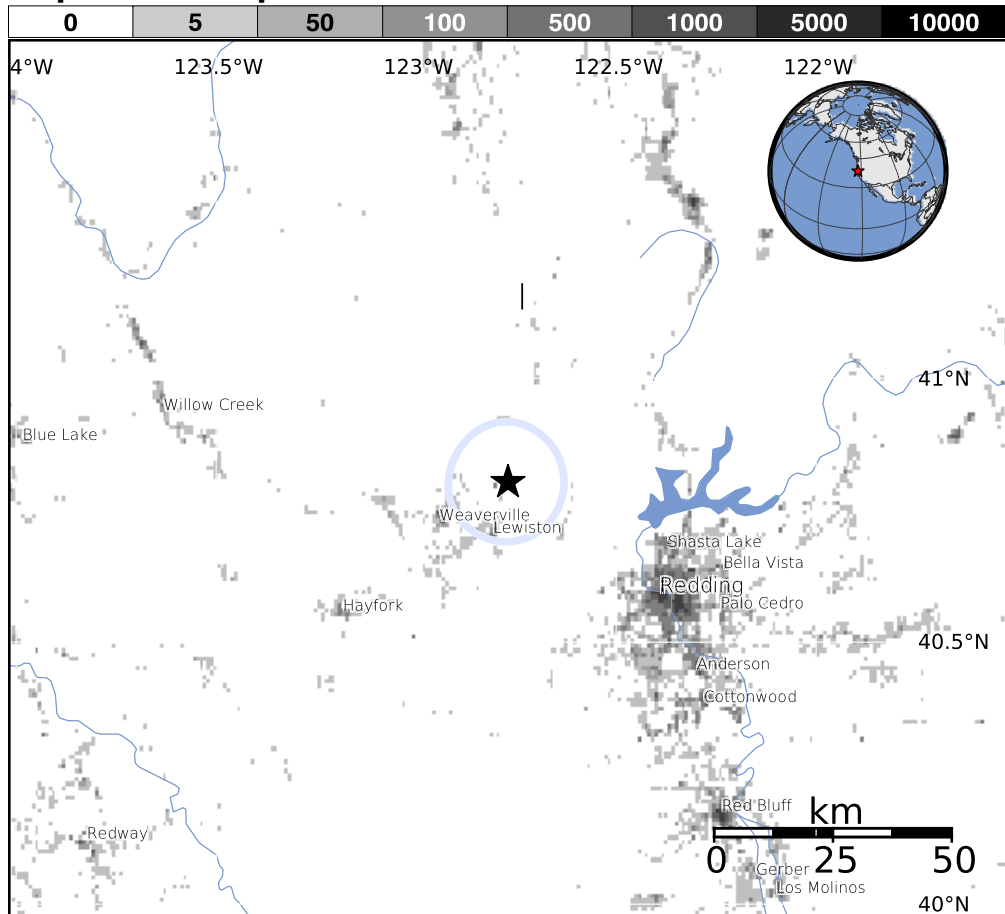


## Estimated Population Exposed to Earthquake Shaking

ESTIMATED POPULATION EXPOSURE (k = x1000)		279k	2k	0	0	0	0	0	0	0
ESTIMATED MODIFIED MERCALLI INTENSITY		I	II-III	IV	V	VI	VII	VIII	IX	X+
PERCEIVED SHAKING		Not felt	Weak	Light	Moderate	Strong	Very Strong	Severe	Violent	Extreme
POTENTIAL DAMAGE	Resistant Structures	none	none	none	V. Light	Light	Moderate	Moderate/Heavy	Heavy	V. Heavy
	Vulnerable Structures	none	none	none	Light	Moderate	Moderate/Heavy	Heavy	V. Heavy	V. Heavy

\*Estimated exposure only includes population within the map area.

## Population Exposure



### Structures:

Overall, the population in this region resides in structures that are highly resistant to earthquake shaking, though some vulnerable structures exist.

### Historical Earthquakes (with MMI levels):

Date (UTC)	Dist. (km)	Mag.	Max MMI(#)	Shaking Deaths
1991-07-13	293	6.8	V(51k)	0
1980-01-24	355	5.8	VII(31k)	1
1993-09-21	179	6.0	VIII(24)	1

Recent earthquakes in this area have caused secondary hazards such as landslides and liquefaction that might have contributed to losses.

## Selected City Exposure

from GeoNames.org

MMI	City	Population
II	Lewiston	1k
I	Weaverville	4k
I	Anderson	10k
I	Bella Vista	3k
I	Blue Lake	1k
I	Burney	3k
I	Redding	90k
I	Red Bluff	14k
I	Shasta Lake	10k
I	Mount Shasta	3k

bold cities appear on map

(k = x1000)

PAGER content is automatically generated, and only considers losses due to structural damage. Limitations of input data, shaking estimates, and loss models may add uncertainty.

<http://earthquake.usgs.gov/pager>

Event ID: nc72457111